

## ■ CIRCUIT BOARDS

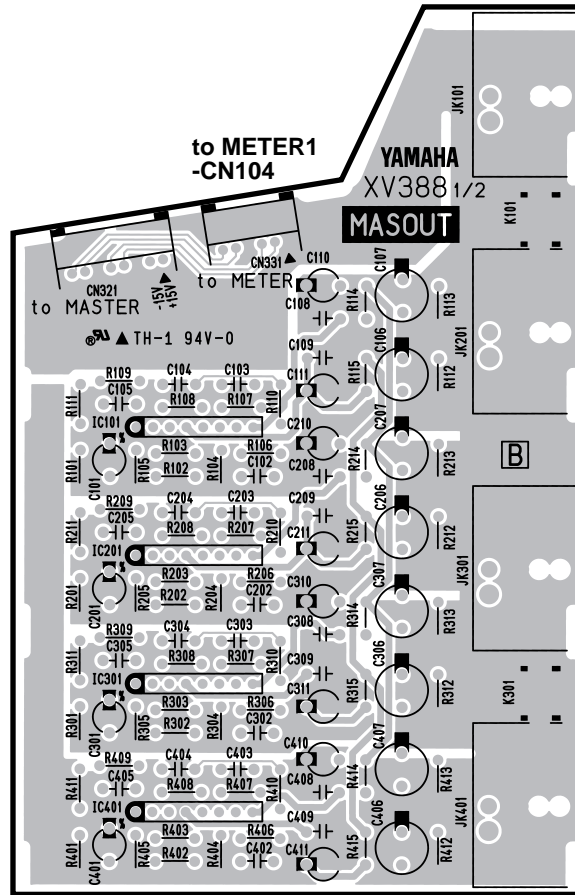
### ■ CONTENTS

MASOUT1 Circuit Board .....	34
MASOUT2 Circuit Board .....	35
MASOUT3 Circuit Board .....	36
METER1 Circuit Board .....	37
METER2 Circuit Board .....	37
METER3 Circuit Board .....	37
CTRL 1/5 Circuit Board .....	38
CTRL 2/5 Circuit Board .....	38
CTRL 3/5 Circuit Board .....	38
CTRL 4/5 Circuit Board .....	38
CTRL 5/5 Circuit Board .....	38
IN1 Circuit Board .....	40
IN2 Circuit Board .....	42
IN3 Circuit Board .....	44
IN4 Circuit Board .....	46
IN JK Circuit Board .....	47
IN PAN Circuit Board .....	47
ISRT 1/6 Circuit Board .....	48
ISRT 2/6 Circuit Board .....	49
ISRT 3/6 Circuit Board .....	49
ISRT 4/6 Circuit Board .....	48
ISRT 5/6 Circuit Board .....	48
ISRT 6/6 Circuit Board .....	48
MAS1 1/2 Circuit Board .....	48
MAS1 2/2 Circuit Board .....	48
MAS2 1/2 Circuit Board .....	52
MAS2 2/2 Circuit Board .....	52
MAS3 1/2 Circuit Board .....	54
MAS3 2/2 Circuit Board .....	54
MAS4 Circuit Board .....	56
MAS PAN Circuit Board .....	56
ST1 Circuit Board .....	57
ST2 Circuit Board .....	58
ST3 Circuit Board .....	59
ST4 Circuit Board .....	60
STJK 1/2 Circuit Board .....	60
STJK 2/2 Circuit Board .....	60

**Note :** See parts list for details of circuit board component parts.

• MASOUT1 Circuit Board

- CN321: (AUX OUT 326)
- MAS2-CN205  
(AUX/GRP OUT A7/G1~A10/G4)
- MAS2-CN206  
(AUX/GRP OUT A11/G5~A14/G8)
- MAS2-CN207  
(GRP/AUX OUT G1/A7~G4/A10)
- MAS3-CN308  
(GRP/AUX OUT G5/A11~G8/A14)
- MAS3-CN309  
(MATRIX OUT 1~4)
- MAS1-CN101  
(MATRIX OUT 5~8)
- MAS1-CN102



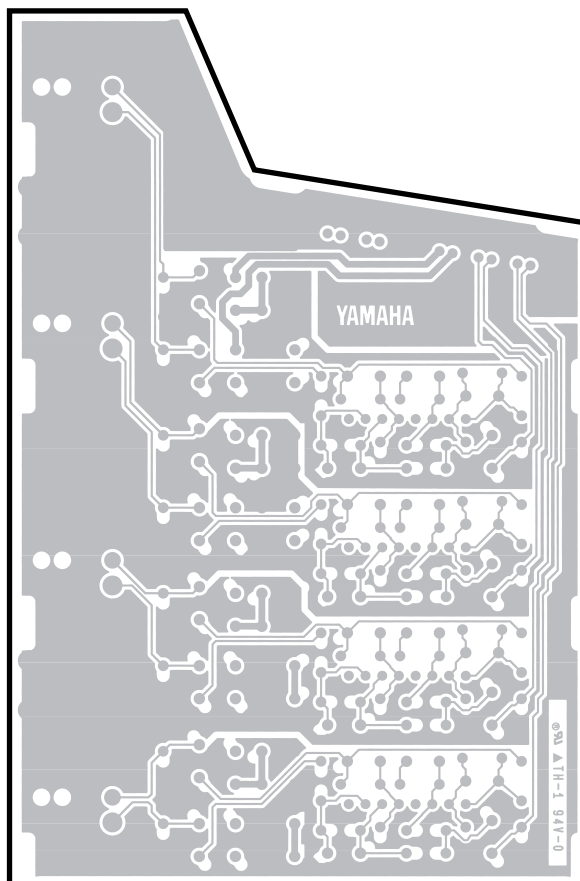
MATRIX OUT (5, 1)  
AUX/GRP OUT (A11/G6, A7/G1)  
GRP/AUX OUT (G5/A11, G1/A7)  
AUX OUT (3)

MATRIX OUT (6, 2)  
AUX/GRP OUT (A12/G6, A8/G2)  
GRP/AUX OUT (G6/A12, G2/A8)  
AUX OUT (4)

MATRIX OUT (7, 3)  
AUX/GRP OUT (A13/G7, A9/G3)  
GRP/AUX OUT (G7/A13, G3/A9)  
AUX OUT (5)

MATRIX OUT (8, 4)  
AUX/GRP OUT (A14/G8, A10/G4)  
GRP/AUX OUT (G8/A14, G4/A10)  
AUX OUT (6)

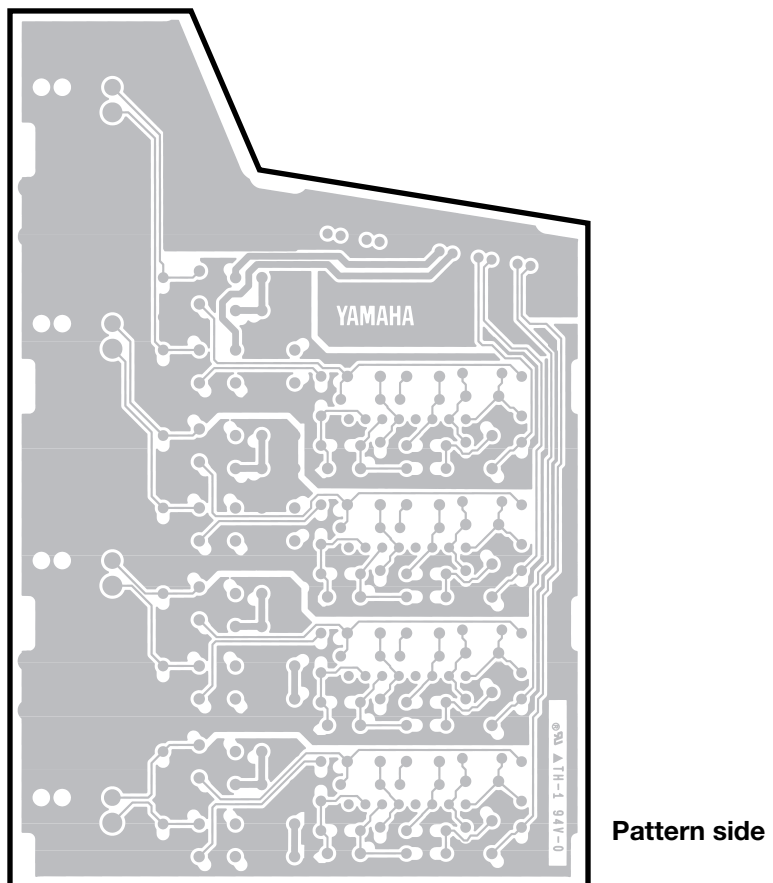
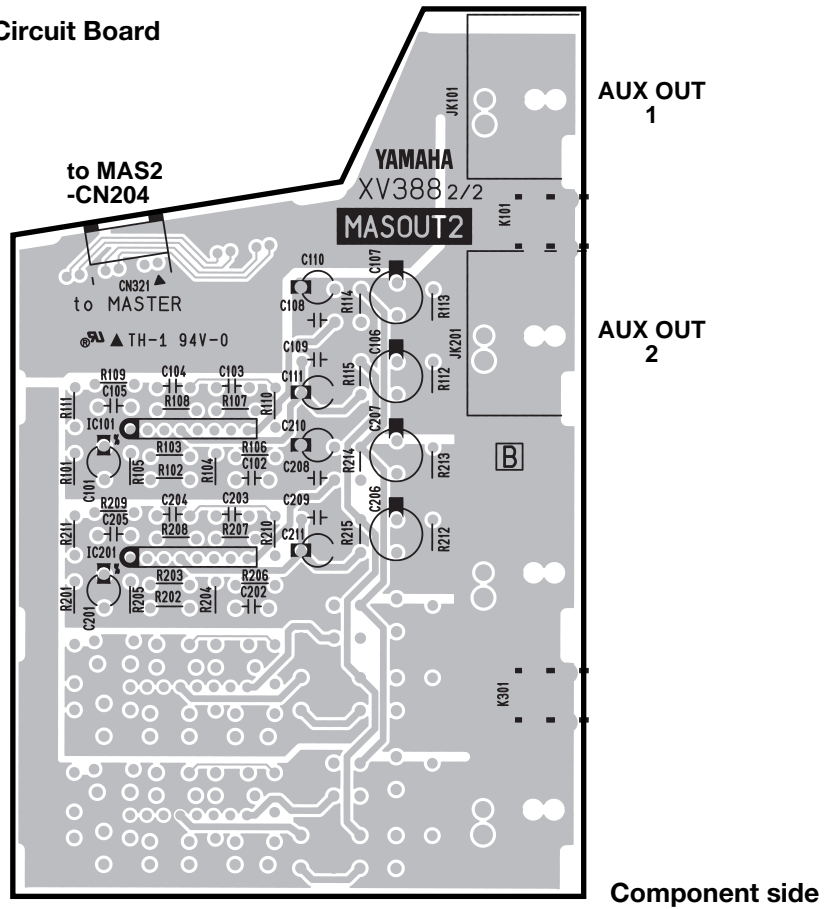
Component side



Pattern side

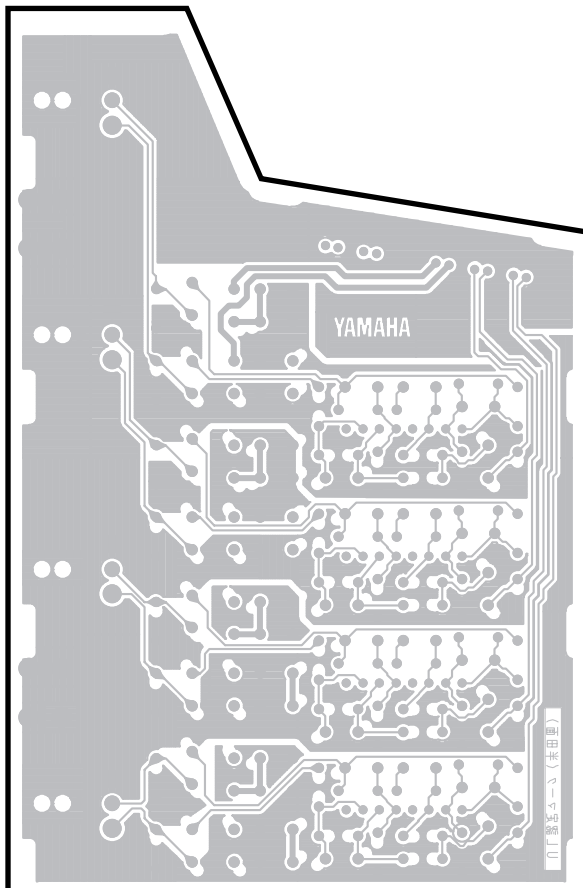
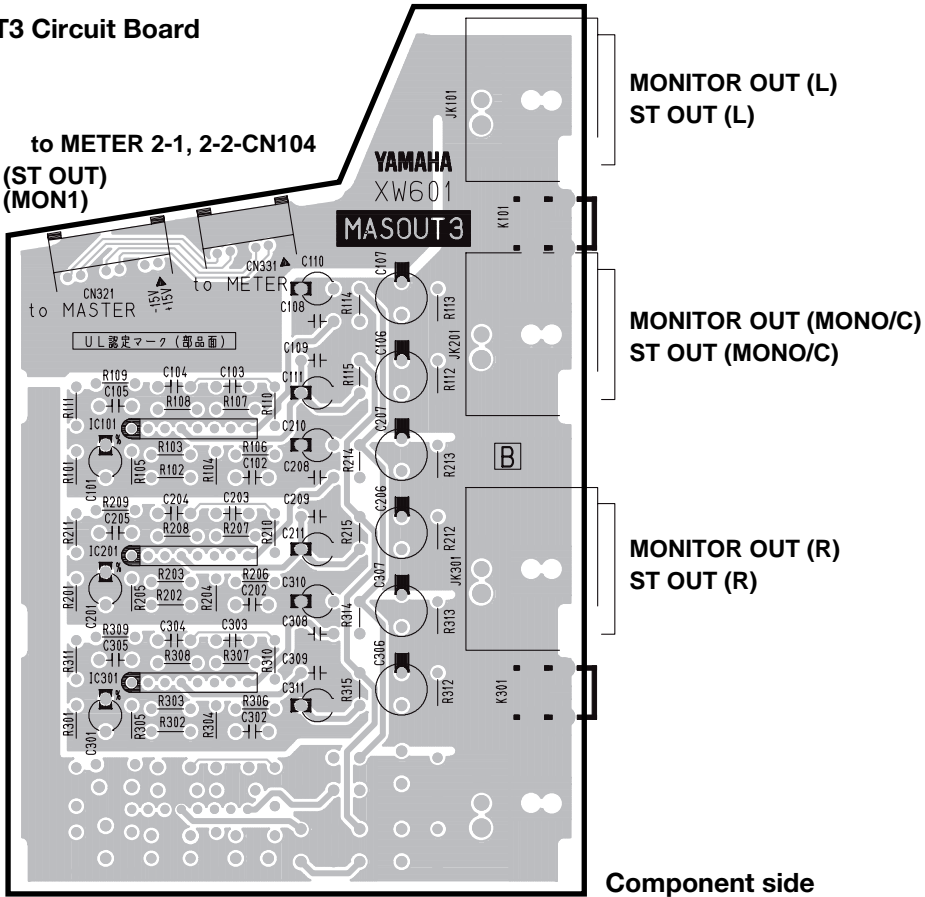
MASOUT1 : 3NA-V230710

• MASOUT2 Circuit Board



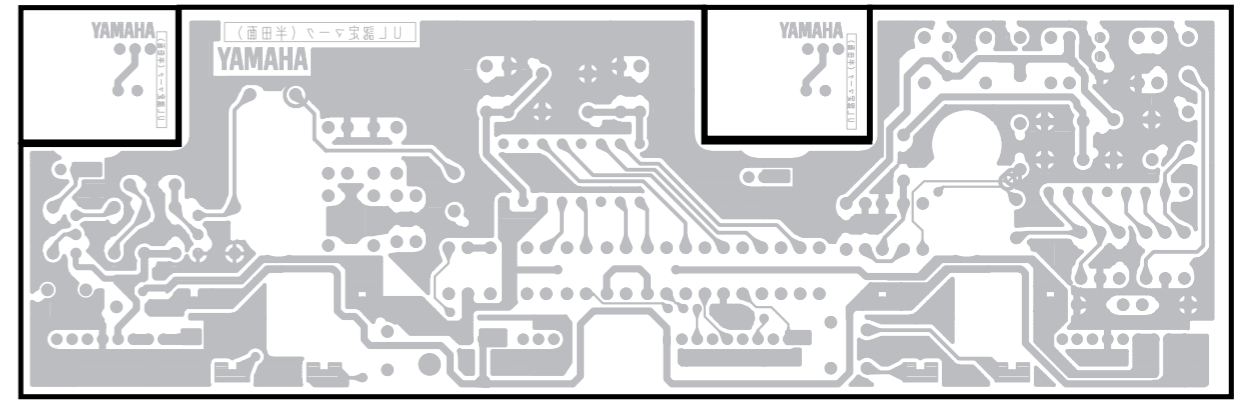
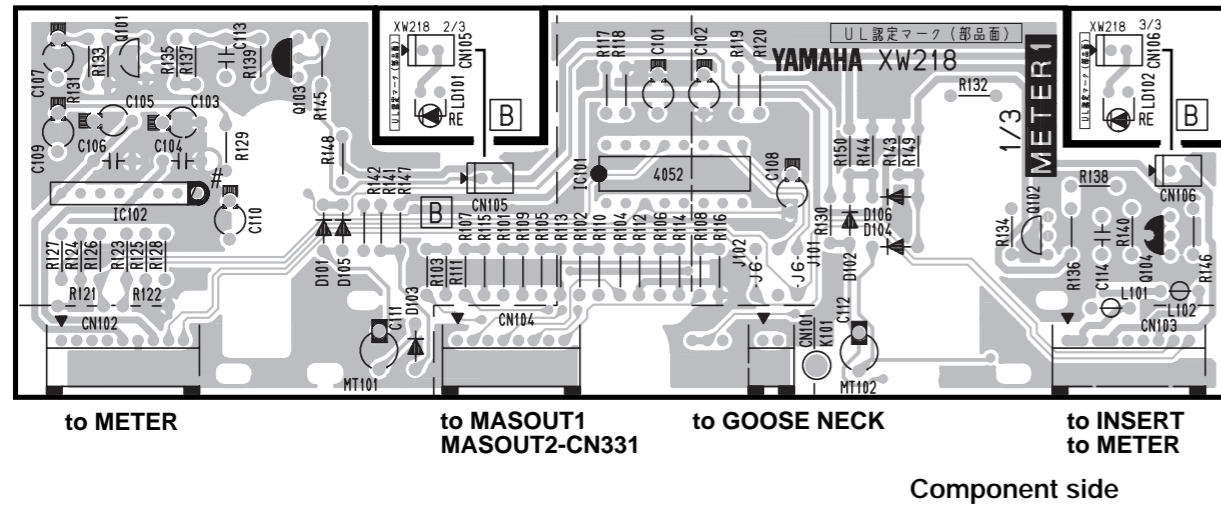
• MASOUT3 Circuit Board

to MAS3-CN310 (ST OUT)  
to MAS3-CN321 (MON1)



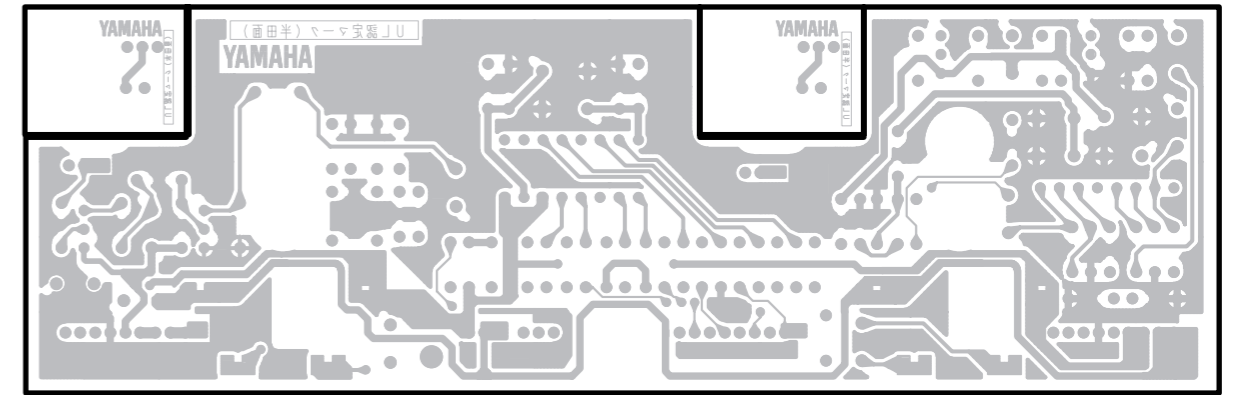
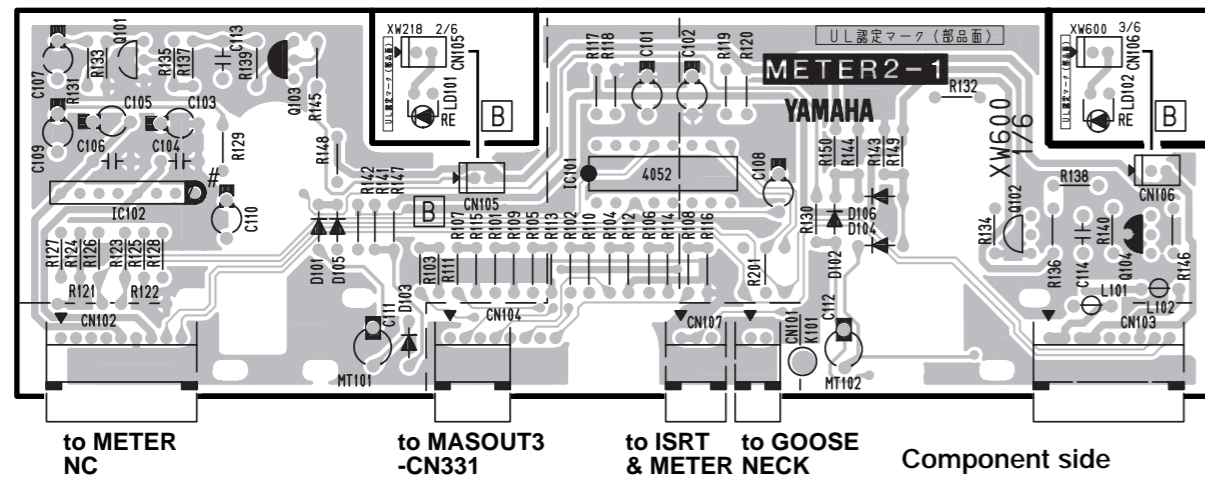
MASOUT3 : 3NA-V431500

• METER1 Circuit Board



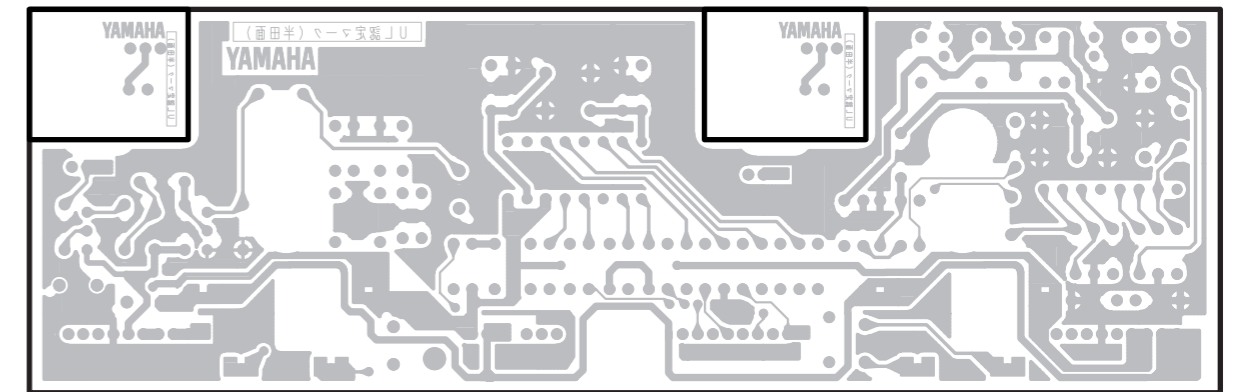
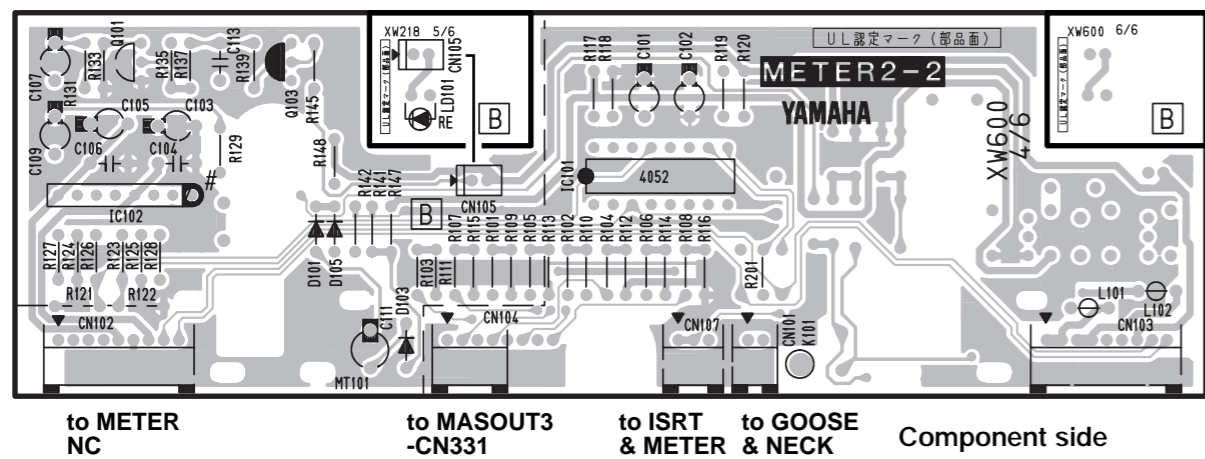
Pattern side

• METER2-1 Circuit Board



Pattern side

• METER2-2 Circuit Board



Pattern side

- METER1: 3NA-V431480
- METER2-1: 3NA-V431490
- METER2-2: 3NA-V431490