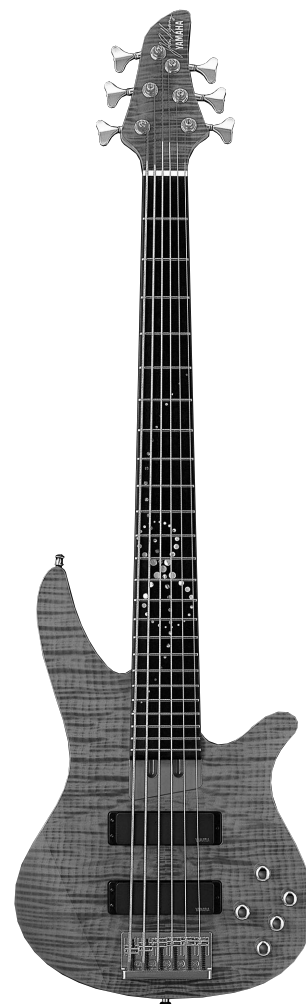


ELECTRIC BASS

RBX 6JM

SERVICE MANUAL

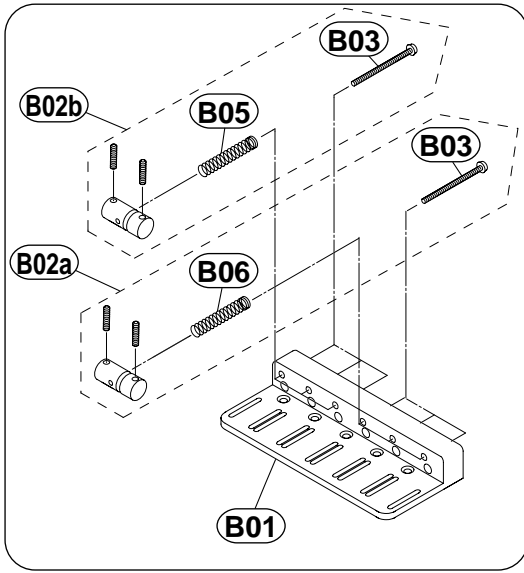


■ CONTENTS

OVERALL ASSEMBLY.....	2
ELECTRICAL PARTS	4
CIRCUIT BOARDS	6
CIRCUIT DIAGRAM.....	7
WIRING.....	8
SPECIFICATIONS.....	8

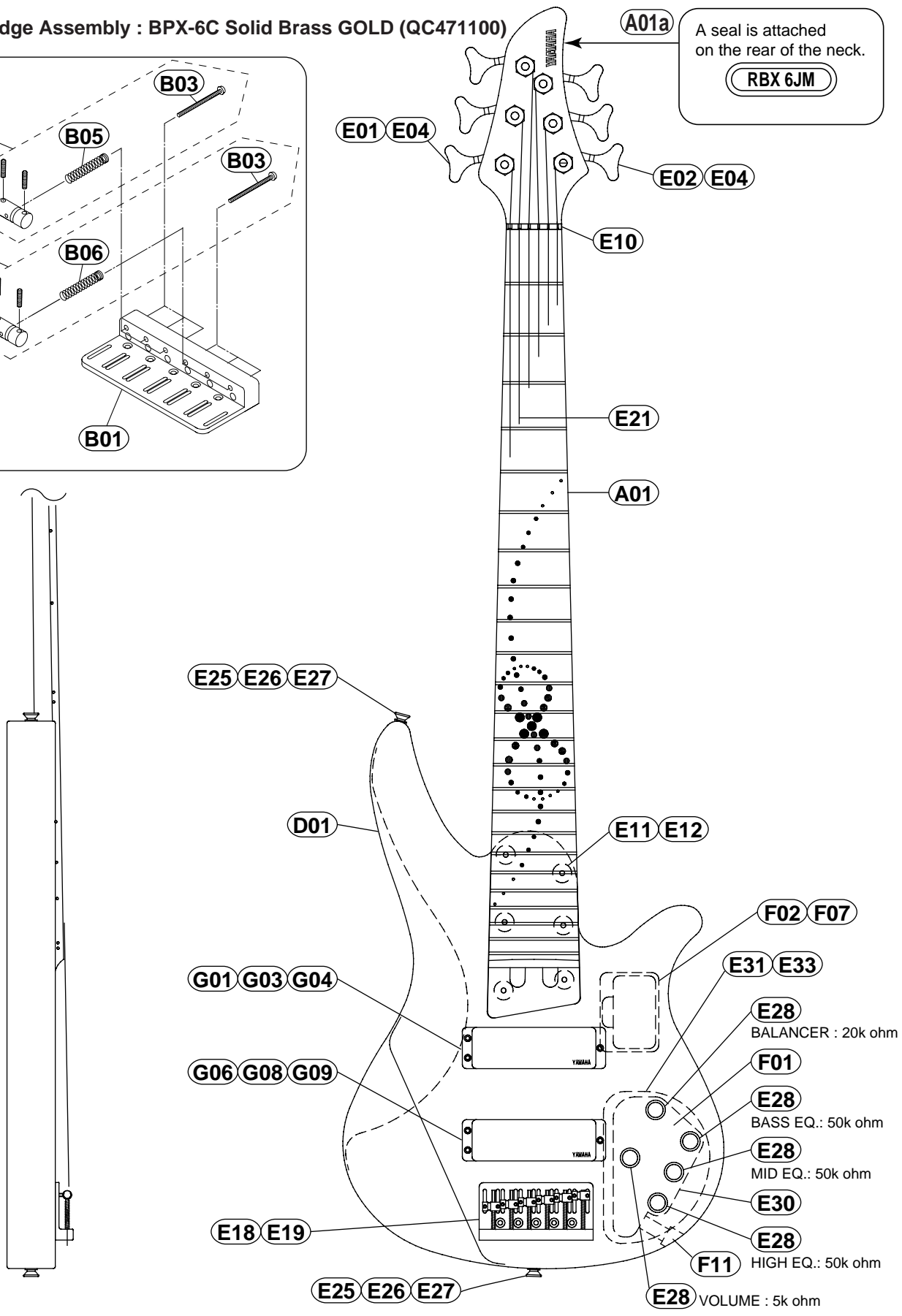
OVERALL ASSEMBLY

E18 Bridge Assembly : BPX-6C Solid Brass GOLD (QC471100)



A seal is attached on the rear of the neck.

RBX 6JM



REF NO.	PART NO.	DESCRIPTION		REMARKS	QTY	RANK
* A01	DX809790	OVERALL ASSEMBLY		RBX 6JM		
* A01	DX809780	Neck Assembly		TB		
* A01a	--	Neck Assembly		RR		
		Seal		(QC47030)		
D01	--	Body				
E01	QC336300	Tuning Machine Assembly	RM1243 (GOLD)		3	09
E02	QC336400	Tuning Machine Assembly	RM1243L (GOLD)		3	09
E04	03704070	Round Head Wood Screw	2.4X10 GOLD		6	02
* E10	QC471400	Nut	51mm			09
E11	QC205200	Neck Joint Bushing	BL		6	04
E12	VI825000	Oval Head Tapping Screw	5.0X40 MFZN2BL (BL)		6	01
* E18	QC471100	Bridge Assembly	BPX-6C (GOLD)	Solid Brass		
E19	QA170100	Oval Head Tapping Screw	4.0X35 GOLD		5	01
E21	--	Strings	H6010	1set (QC02470)		
E25	BB802460	Strap Button	ST type (GOLD)		2	02
E26	EM630250	Oval Head Tapping Screw	3.0X25 GOLD	(EN23013)	2	02
E27	VB793700	Spacer	BL		2	01
E28	QC032200	Knob	GOLD		5	06
E30	QC429500	Instruction sheet				05
* E31	QC513200	Back Cover	Electrical (BL)			08
E33	ER327136	Oval Head Wood Screw	2.7X13 FCM3BL (BL)	(EB62002)	5	01
F01	QC432100	Electrical Unit	(1) 3-BAND EQ.			29
F02	VK505700	Box for Dry Cell	(2)			07
F07	EJ330086	Pan Head Tapping Screw	3.0X8 FCM3BL (BL)	(QC02500)	2	01
F11	QC437300	Electrical Unit(Jack Assy)	(3)			10
* G01	QC474100	Pickup Assembly		Front		19
* G03	03741140	Pan Head Tapping Screw	3.0X35 FCM3BL (BL)		3	01
G04	CB815450	Pickup Cushion	85LX17WX15H		4	02
* G06	QC474200	Pickup Assembly		Rear		19
* G08	03741140	Pan Head Tapping Screw	3.0X35 FCM3BL (BL)		3	01
G09	CB815450	Pickup Cushion	85LX17WX15H		4	02
H01	QC354000	Accessory Unit	(G-1)	1set		07
* B01	QC471100	Bridge Assembly	BPX-6C (GOLD)	Solid Brass		
* B01	QC471200	Bridge Base	P=16.5 (GOLD)			
* B02a	AAAX03190	Bridge Piece Assembly	GOLD with screw	1-3	3	
* B02b	AAAX03200	Bridge Piece Assembly	GOLD with screw	4-6	3	
B03	EA330400	Pan Head Screw	3.0X40 FCM3BL (BL)		6	01
B05	AX818240	Spring	30mm (BL)	1-3 string	3	02
B06	AX818250	Spring	25mm (BL)	4-6 string	3	02

* New Parts

RANK:Japan only

WARNING: CHEMICAL CONTENT NOTICE!

The solder used in the production of this product contains LEAD. In addition, other electrical/electronic and/or plastic (where applicable) components may also contain traces of chemicals found by the California Health and Welfare Agency (and possibly other entities) to cause cancer and/or birth defects or other reproductive harm.

DO NOT PLACE SOLDER, ELECTRICAL/ELECTRONIC OR PLASTIC COMPONENTS IN YOUR MOUTH FOR ANY REASON WHAT SO EVER!

Avoid prolonged, unprotected contact between solder and your skin! When soldering, do not inhale solder fumes or expose eyes to solder/flux vapor!

If you come in contact with solder or components located inside the enclosure of this product, wash your hands before handling food.

ELECTRICAL PARTS

REF NO.	PART NO.	DESCRIPTION		REMARKS	QTY	RANK
		ELECTRICAL PARTS		RBX 6JM		
	QC432100	Electrical Unit	3-BAND EQ.			29
	QC434900	Hexagonal Nut				06
C1-4	FP355100	Tantalum Capacitor	0.1uF/35V			02
C05	FX804200	Electlytic Cap.	22u/16V R3A-16V220			05
C06	FX804200	Electlytic Cap.	22u/16V R3A-16V220			05
C31	UI137100	Electlytic Cap.	10u/16V RC3-16V100			01
C32	FG444100	Ceramic Capacitor	0.01uF/50V			01
C33	FX804200	Electlytic Cap.	22u/16V R3A-16V220			05
C34	UI137100	Electlytic Cap.	10u/16V RC3-16V100			01
C35	FG444100	Ceramic Capacitor	0.01uF/50V			01
C36	UI137100	Electlytic Cap.	10u/16V RC3-16V100			01
C37	FG444100	Ceramic Capacitor	0.01uF/50V			01
C38	UI137100	Electlytic Cap.	10u/16V RC3-16V100			01
C39	UI166100	Electlytic Cap.	1u/50V RC3-50V010M			01
C40	UI166100	Electlytic Cap.	1u/50V RC3-50V010M			01
C41	FG444100	Ceramic Capacitor	0.01uF/50V			01
C42	FG444100	Ceramic Capacitor	0.01uF/50V			01
C51	FG212100	Ceramic Capacitor	100pF/50V			01
C52	FG212100	Ceramic Capacitor	100pF/50V			01
C53	FX804200	Electlytic Cap.	22u/16V R3A-16V220			05
C61	UA154330	Mylar Capacitor	0.033uF			03
C62	UA155100	Mylar Capacitor	0.1uF/50V			01
C63	UI166100	Electlytic Cap.	1u/50V RC3-50V010M			01
C71	UA154220	Mylar Capacitor	0.022uF			01
C72	UA154220	Mylar Capacitor	0.022uF			01
C73	FG212100	Ceramic Capacitor	100pF/50V			01
C74	UA153100	Mylar Capacitor	1000pF/50V			01
C81	UA153220	Mylar Capacitor	2200pF			01
C82	UA153150	Mylar Capacitor	1500pF			01
C83	FG212100	Ceramic Capacitor	100pF/50V			01
C84	FG212330	Ceramic Capacitor	330pF/50V			01
C85	FG212330	Ceramic Capacitor	330pF/50V			01
CN1	LB918020	Connector	B2B-XH-A 2P	FRONT PICKUP		01
CN2	LB918020	Connector	B2B-XH-A 2P	REAR PICKUP		01
CN3	LB918040	Connector	B4B-XH-A 4P	OUTPUT JACK		01
CN4	LB918020	Connector	B2B-XH-A 2P	BATTERY		01
D1-4	IX808800	Diode	E-301			05
D5	QC183900	Diode	1SR139-100			01
IC1	IX808770	IC	OP200GP	OP AMP		12
IC2	IG070700	IC	TL062CP	OP AMP		07
IC3	IG070700	IC	TL062CP	OP AMP		07
IC4	IX808780	IC	TLC7662BEPA			10
L1-4	GX804490	Ci ol	ELEXG101KA 100uH			04
Q1-4	IX808790	FET	2SK30ATM(O)			04
R1-4	HF559100	Carbon Resistor	1.0M 1/6W J			01
R5-8	HF559220	Carbon Resistor	2.2M 1/6W J			03
R09	HF556680	Carbon Resistor	6.8K 1/6W J			01
R10	HF556470	Carbon Resistor	4.7K 1/6W J			01
R11	HF556680	Carbon Resistor	6.8K 1/6W J			01
R12	HF556470	Carbon Resistor	4.7K 1/6W J			01
R13	HF557100	Carbon Resistor	10K 1/6W J			01
R14	HF557100	Carbon Resistor	10K 1/6W J			01
R15	HF556470	Carbon Resistor	4.7K 1/6W J			01
R16	HF556470	Carbon Resistor	4.7K 1/6W J			01
R21	HF558470	Carbon Resistor	470K 1/6W J			03
R23	HF557220	Carbon Resistor	22K 1/6W J			01
R31	HF557330	Carbon Resistor	33K 1/6W J			01
R32	HF557270	Carbon Resistor	27K 1/6W J			01
R51	HF557470	Carbon Resistor	47K 1/6W J			01
R52	HF557470	Carbon Resistor	47K 1/6W J			01
R53	HF557220	Carbon Resistor	22K 1/6W J			01
R54	HF554330	Carbon Resistor	33 1/6W J			03
R55	HF557180	Carbon Resistor	18K 1/6W J			01
R56	HF557220	Carbon Resistor	22K 1/6W J			01
R57	HF554330	Carbon Resistor	33 1/6W J			03
R61	HF557330	Carbon Resistor	33K 1/6W J			01
R62	HF557330	Carbon Resistor	33K 1/6W J			01
R63	HF557120	Carbon Resistor	12K 1/6W J			01
R64	HF557680	Carbon Resistor	68K 1/6W J			01

*:New Parts

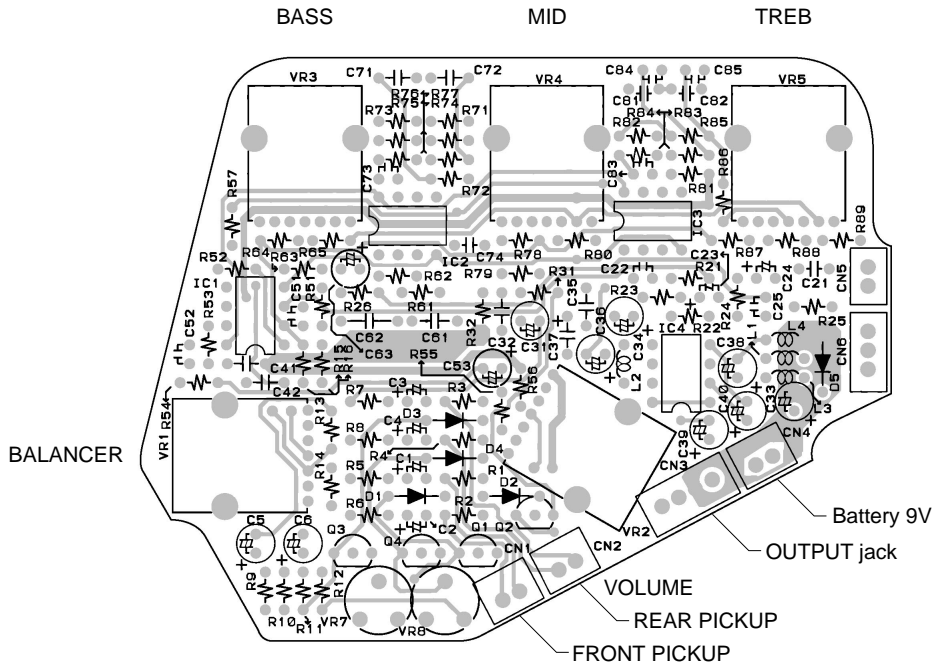
RANK:Japan only

REF NO.	PART NO.	DESCRIPTION		REMARKS	QTY	RANK
R65	HF557470	Carbon Resistor	47K 1/6W J			01
R71	HF558100	Carbon Resistor	100K 1/6W J			01
R72	HF557510	Carbon Resistor	51K 1/6W J			03
R73	HF557270	Carbon Resistor	27K 1/6W J			01
R74	HF557100	Carbon Resistor	10K 1/6W J			01
R75	HF557100	Carbon Resistor	10K 1/6W J			01
R76	HF557180	Carbon Resistor	18K 1/6W J			01
R77	HF557100	Carbon Resistor	10K 1/6W J			01
R78	HF556220	Carbon Resistor	2.2K 1/6W J			01
R79	HF557470	Carbon Resistor	47K 1/6W J			01
R80	HF557470	Carbon Resistor	47K 1/6W J			01
R81	HF557330	Carbon Resistor	33K 1/6W J			01
R82	HF557470	Carbon Resistor	47K 1/6W J			01
R83	HF557100	Carbon Resistor	10K 1/6W J			01
R84	HF557100	Carbon Resistor	10K 1/6W J			01
R85	HF557220	Carbon Resistor	22K 1/6W J			01
R86	HF557100	Carbon Resistor	10K 1/6W J			01
R87	HF556330	Carbon Resistor	3.3K 1/6W J			01
R88	HF557470	Carbon Resistor	47K 1/6W J			01
R89	HF557470	Carbon Resistor	47K 1/6W J			01
VR1	HX809140	Rotary Variable Resistor	EWCE6AF22B24 20K	BALANCER		07
VR2	HX809150	Rotary Variable Resistor	EWCE6AF22A53 5K	VOLUME		07
VR3	HX809160	Rotary Variable Resistor	EWCE6AF22B54 50K	EQUALIZER BASS		07
VR4	HX809160	Rotary Variable Resistor	EWCE6AF22B54 50K	EQUALIZER MID		07
VR5	HX809160	Rotary Variable Resistor	EWCE6AF22B54 50K	EQUALIZER TREBLE		07
VR7	HX809170	Trimmer Potentiometer	EVND8AA0 BQ3 4.7K			04
VR8	HX809170	Trimmer Potentiometer	EVND8AA0 BQ3 4.7K			04

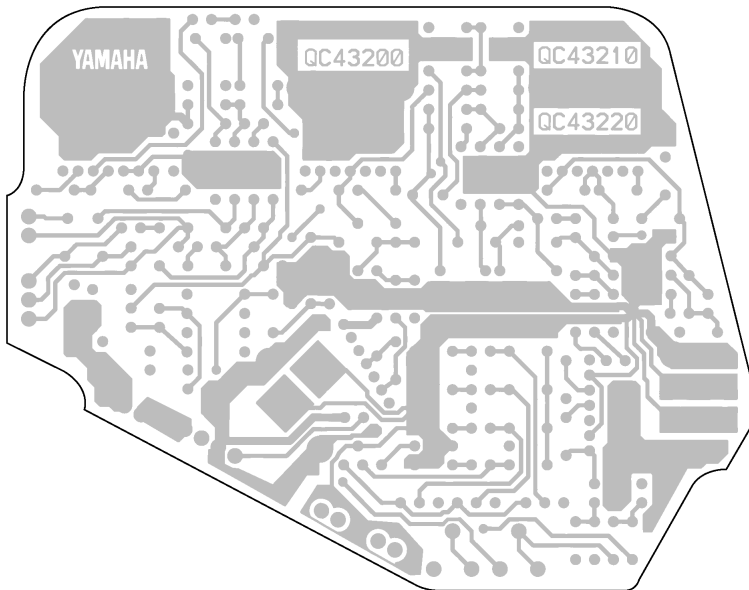
*:New Parts

RANK:Japan only

CIRCUIT BOARD

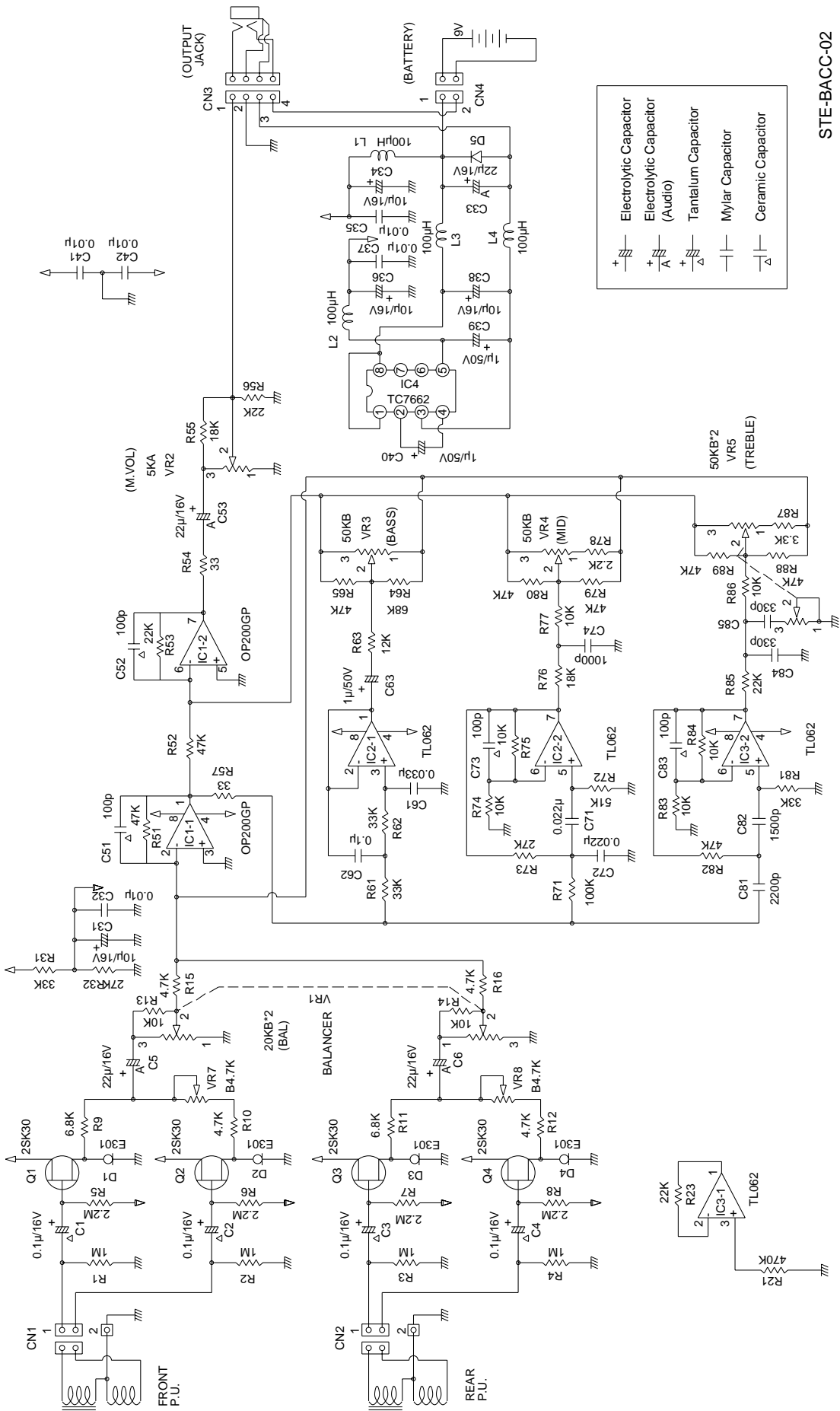


Component side



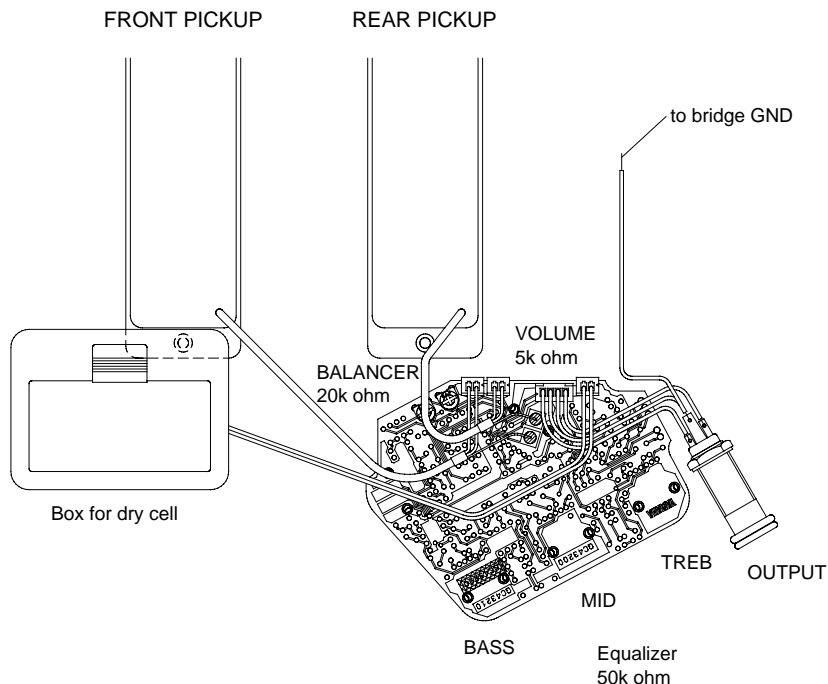
Pattern side

CIRCUIT DIAGRAM



STE-BACC-02

WIRING



SPECIFICATIONS

STANDARD SPECIFICATIONS

Scale Length	889.0mm
Body-Neck Construction	Bolt On
Length	1157.3mm
Width	351.0mm
Net Weight	5.0kg

COLOR

Body	
TB	Turquoise Blue
RR	Ruby Red

Neck	
TB	Turquoise Blue
RR	Ruby Red

BODY

Material	Alder
Veneer	Figured Maple
Body Depth	44.0mm

FINGERBOARD

Material	Ebony
Fingerboard Width	0-F 51.0 mm, 12-F 83.0 mm
No. of Frets	24

NECK

Material	Maple
Neck Thickness	1-F 20.0 mm, 12-F 23.2 mm

PARTS

Hardware	Gold Plated
Nut	Bone
Bridge	BPX-6C: Solid Brass (Gold)
Strings	YAMAHA H6010

CONTROLS

Volume	5k ohm × 1
Balancer	20k ohm × 1
Equalizer	50k ohm × 3

PICKUPS

Front/Rear	Double Coil
Magnet	
Front/Rear	Alnico