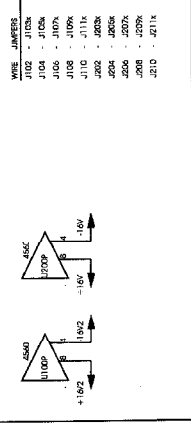
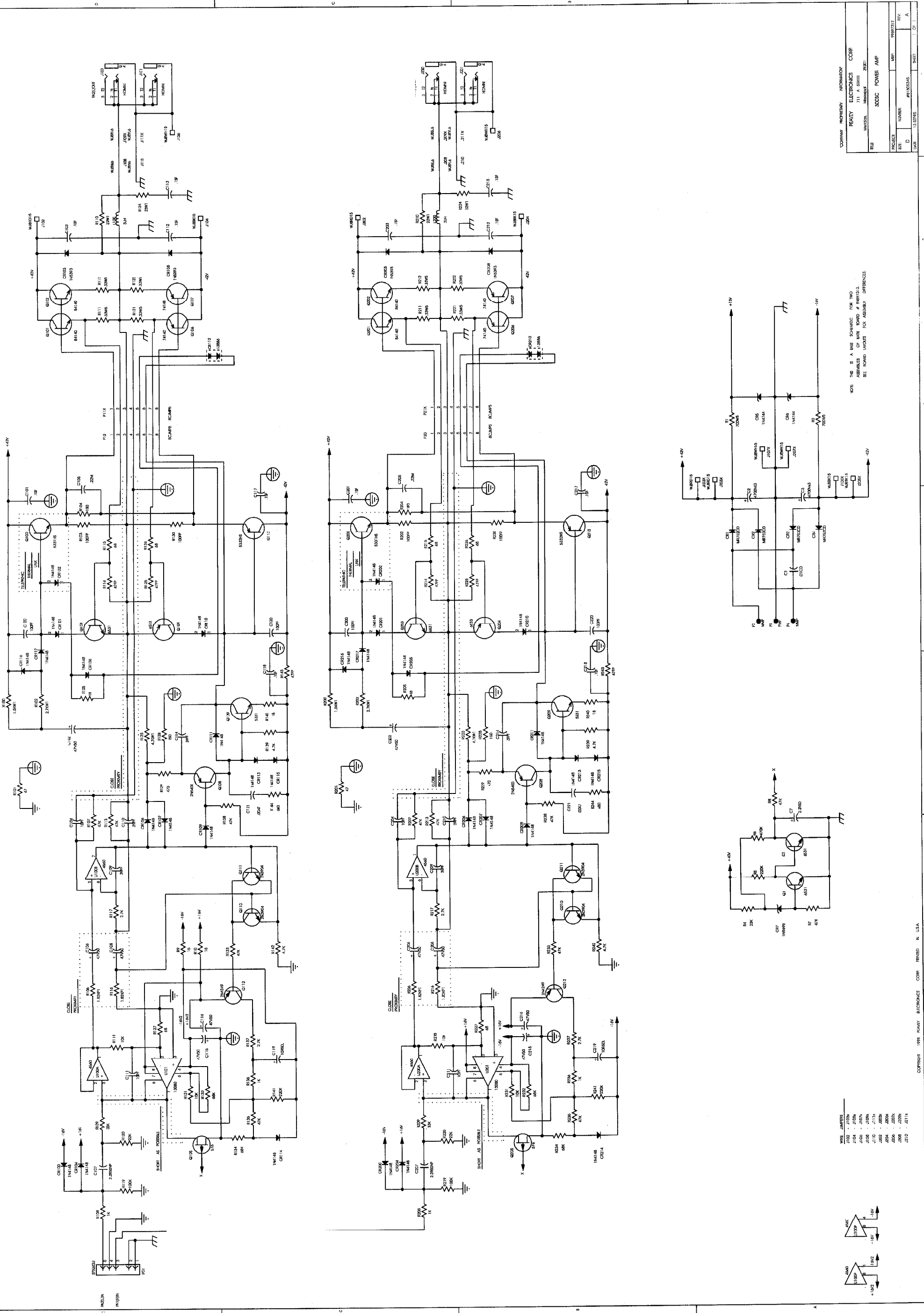


NOTE: THIS IS A BASE SCHEMATIC FOR TWO ASSEMBLES OF WIRE BOARD # 1997013. SEE BOARD LAYOUT FOR ASSEMBLY DIFFERENCES.



FOR IRM 6150 ASSEMBLY
USE 1.5K RESISTORS

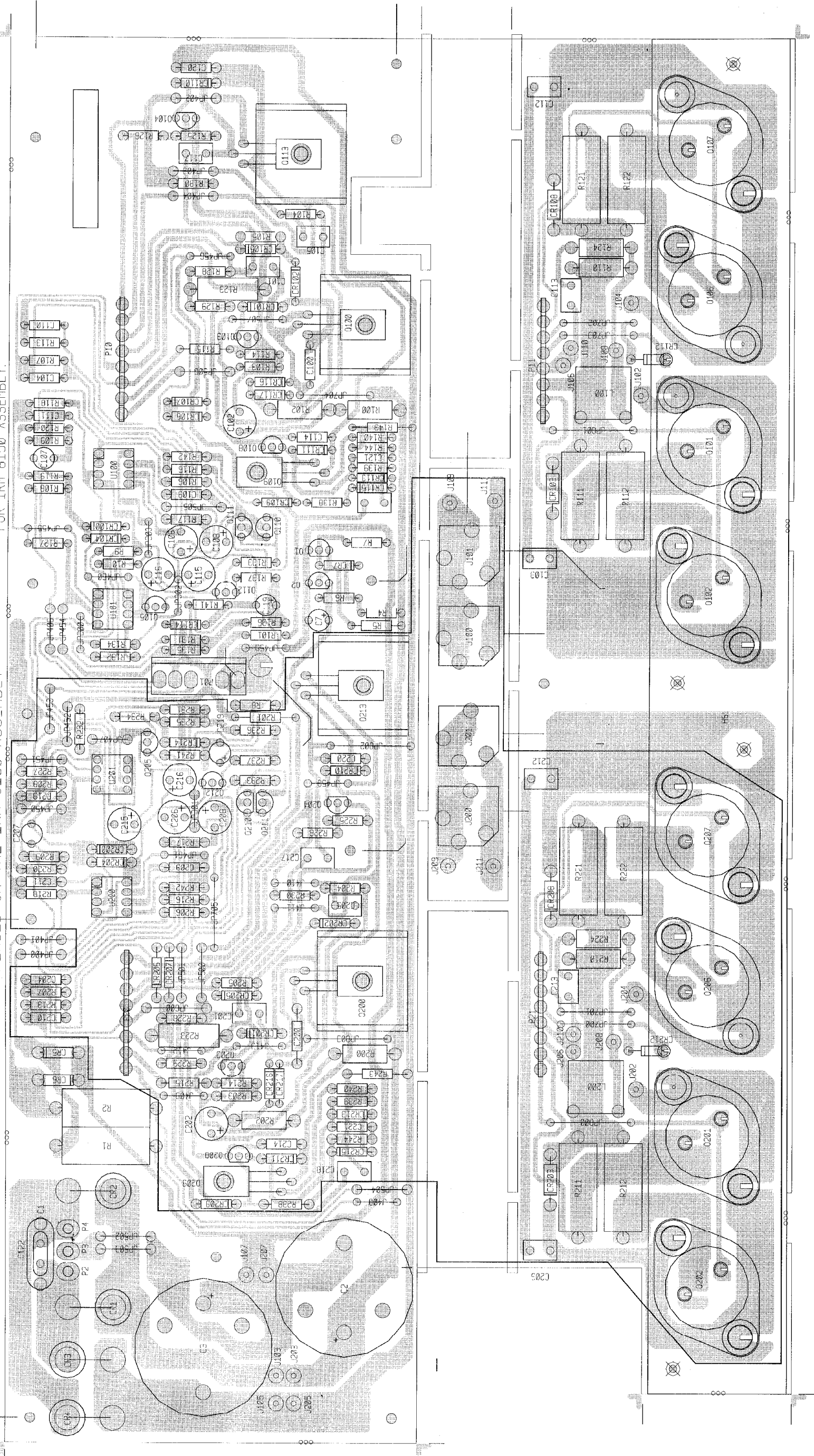
DEVICES IN THIS AREA WILL NOT BE
PLACED ON THE IRM 6150 ASSEMBLY

DO NOT INSERT PIN #1
FOR IRM 8150 ASSEMBLY.

INSERT C122 FOR BOTH EXPORT ASSEMBLIES
INSERT C1 FOR BOTH DOMESTIC ASSEMBLIES

300SC POWER

ASSEMBLY NAME
300SC DOMESTIC
300SC EXPORT
IRM 8150 DOMESTIC
IRM 8150 EXPORT

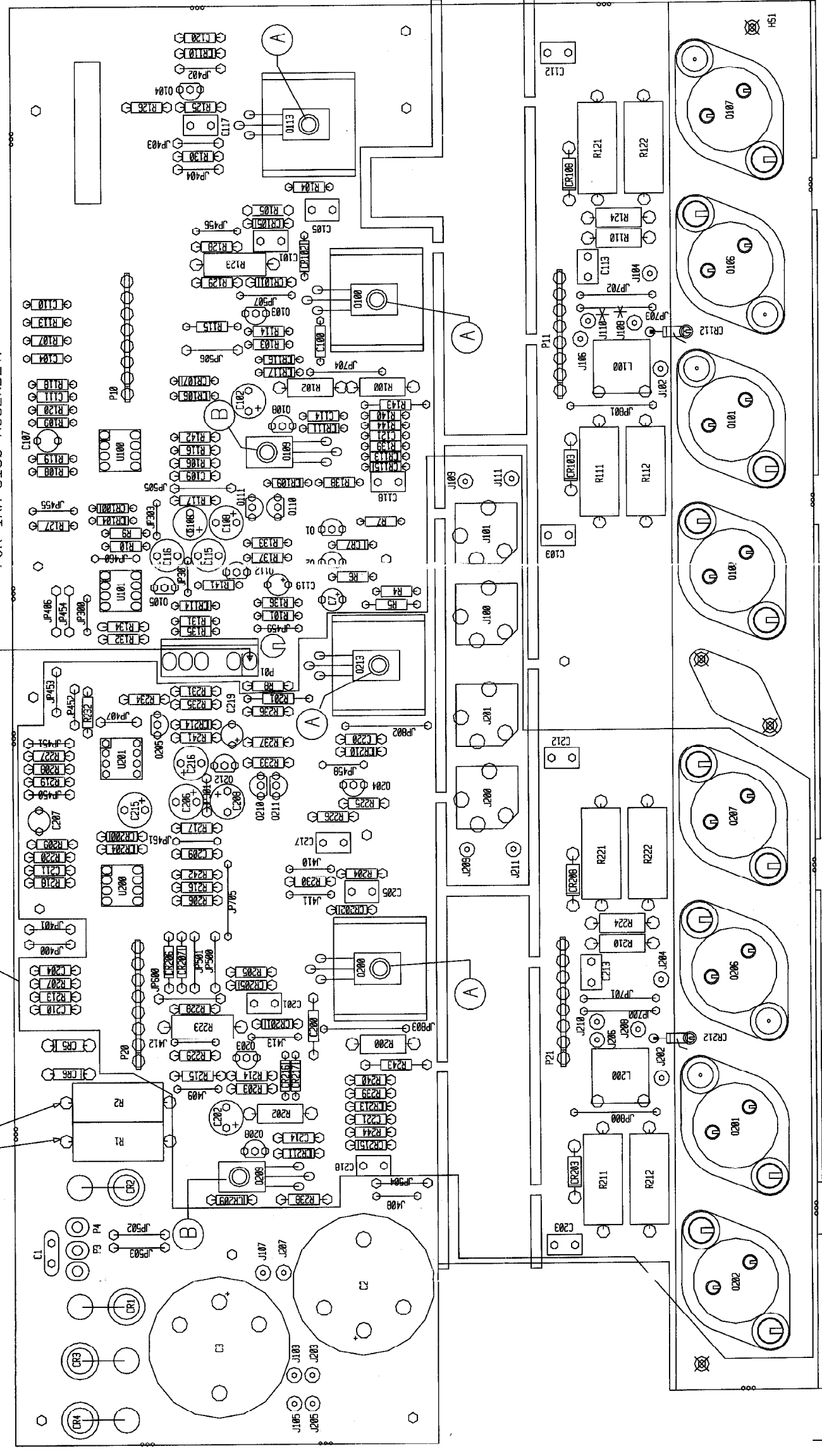


ASSEMBLY NAME	ASSEMBLY P/N
XRD 680	99597312
IRM 8150	99530383

FOR IRM 8150 ASSEMBLY
USE 1.5K RESISTORS

DEVICES IN THIS AREA WILL NOT
BE PLACED ON THE IRM 8150 ASSEMBLY.

DO NOT INSERT PIN #1
FOR IRM 8150 ASSEMBLY.



P/N's of wire jumpers
 J102. J103. J202. J203 - P/N 91012174
 J104. J105. J204. J205 - P/N 91090175
 J106. J107. J206. J207 - P/N 91011165
 J108. J109. J208. J209 - P/N 91090172
 J110. J111. J210. J211 - P/N 91090173

*NOTE: FOR IRM 8150 ASSEMBLY:
 J108 USES WIRE P/N 91090253
 J110 USES WIRE P/N 91090254

Connect wire jumpers
to the following locations:

XRD 680	IRM 8150
J210 to J211	J102 to J103
J208 to J209	J104 to J105
J206 to J207 @	J106 to J107 #
J102 to J103 #	J108 & J110
J104 to J105 #	WILL NOT BE
J106 to J107	CONNECTED.
J108 to J109	
J110 to J111	
J202 to J203 @	
J204 to J205 @	

300SC / IRM8150 POWER/DRIVE BD.

BOARD NAME: 300SC ENR/DE	PART	DESCRIPTION AND DEVICE DESIGNATIONS	INR69B	INR69B	70400969	INR69B 22V 5% ZENER DIODE	5331HS	5331	70405331	68K	70240032	68K-1/4W-5% CF-T&R
1	INR69B	1N969B	4148	70464148	CR7	CR7	2	84140	70484140	1	47K	47K-1/4W-5% CF-T&R
3	INR69B	4148	70464148	CR100, CR101, CR102	CR100, CR101, CR102	CR100, CR101, CR102	2	84140	70484140	1	47K	47K-1/4W-5% CF-T&R
1	INR69B	5393	70465393	CR103	CR103	CR103	1	6531	70465393	1	68K	68K-1/4W-5% CF-T&R
4	INR69B	4148	70464148	CR104, CR105, CR107	CR104, CR105, CR107	CR104, CR105, CR107	1	6534	70465393	1	47K	47K-1/4W-5% CF-T&R
1	INR69B	5393	70465393	CR108	CR108	CR108	1	576	70460576	1	1K	1K-1/4W-5% CF-T&R
3	INR69B	4148	70464148	CR109, CR110, CR111	CR109, CR110, CR111	CR109, CR110, CR111	2	74140	70474140	1	2.7K	2.7K-1/4W-5% CF-T&R
1	INR69B	13886	70413886	CR112	CR112	CR112	1	2N5400	70460761	1	47K	47K-1/4W-5% CF-T&R
8	INR69B	4148	70464148	CR113, CR114, CR115, CR116, CR117, CR200, CR201, CR202	CR113, CR114, CR115, CR116, CR117, CR200, CR201, CR202	CR113, CR114, CR115, CR116, CR117, CR200, CR201, CR202	1	5331	70405331	1	18	18-1/4W-5% CF-T&R
1	INR69B	5393	70465393	CR203	CR203	CR203	2	2N3904	70463904	1	220K	220K-1/4W-5% CF-T&R
4	INR69B	4148	70464148	CR204, CR205, CR206, CR207	CR204, CR205, CR206, CR207	CR204, CR205, CR206, CR207	1	2N4249	70464249	1	4.7K	4.7K-1/4W-5% CF-T&R
1	INR69B	5393	70465393	CR208	CR208	CR208	1	5332HS	70405332	1	47FP	47FP-1/4W-5% FP-T&R
3	INR69B	4148	70464148	CR209, CR210, CR211	CR209, CR210, CR211	CR209, CR210, CR211	2	700W5	70250061	1	680	680-1/4W-5% CF-T&R
1	INR69B	13886	70413886	CR212	CR212	CR212	1	22K	70240029	1	1.5KW1	1.5K-1W-5% MO-T&R
5	INR69B	4148	70464148	CR213, CR214, CR215, CR216, CR217	CR213, CR214, CR215, CR216, CR217	CR213, CR214, CR215, CR216, CR217	1	220K	70240036	1	47	47-1/4W-5% CF-T&R
2	HIDNVI	71466214	71466214	F51	F51	F51	1	470K	70240038	1	100FP	100FP-1/4W-5% FP-T&R
2	WJ8RD15	WJ8RD15	91012174	J100, J101	J100, J101	J100, J101	2	47K	70240031	1	47K	47K-1/4W-5% CF-T&R
2	WJ8BK15	WJ8BK15	91090175	J102, J103	J102, J103	J102, J103	2	15	70240005	1	180	180-1/4W-5% CF-T&R
2	WJ8WH15	WJ8WH15	91011165	J104, J105	J104, J105	J104, J105	1	1.5KW1	70210007	1	18	18-1/4W-5% CF-T&R
2	WJ8BL6	WJ8BL6	91090172	J106, J107	J106, J107	J106, J107	1	47	70240008	1	1.82KP1	1.82K-1/4W-5% CF-T&R
2	WJ8YL6	WJ8YL6	91090173	J108, J109	J108, J109	J108, J109	1	2.7KW1	70210016	1	47K	47K-1/4W-5% CF-T&R
2	HIDNVI	71466214	71466214	J110, J111	J110, J111	J110, J111	1	100FP	70240096	1	1K	1K-1W-5% MO-T&R
2	WJ8RD15	WJ8RD15	91012174	J200, J201	J200, J201	J200, J201	1	180	70240012	1	33K	33K-1/4W-5% CF-T&R
2	WJ8BK15	WJ8BK15	91090175	J202, J203	J202, J203	J202, J203	1	18	70240006	1	22W1	22-1W-5% MO-T&R
2	WJ8WH15	WJ8WH15	91011165	J204, J205	J204, J205	J204, J205	1	1.82KP1	70241078	2	.33W5	.33-5W-10% MW-AXL
2	WJ8BL6	WJ8BL6	91090172	J206, J207	J206, J207	J206, J207	1	47K	70240031	1	47K	47K-1/4W-5% CF-T&R
2	WJ8YL6	WJ8YL6	91090173	J208, J209	J208, J209	J208, J209	1	1K	70240017	1	47FP	47FP-1/4W-5% FP-T&R
2	3UH	3UH	70519939	J210, J211	J210, J211	J210, J211	1	33K	70240030	1	68	68-1/4W-5% CF-T&R
1	NMP	NMP	73711812	L100, L200	L100, L200	L100, L200	1	22W1	70210001	1	1.82KP1	1.82K-1/4W-5% CF-T&R
1	FMP	FMP	73711811	P2	P2	P2	2	.33W5	70250003	1	2.7K	2.7K-1/4W-5% CF-T&R
1	NMP	NMP	73711812	P3	P3	P3	1	47K	70240031	1	10K	10K-1/4W-5% CF-T&R
1	SPX6K3U	SPX6K3U	XXXXXXX	P4	P4	P4	1	47FP	70240030	1	100K	100K-1/4W-5% CF-T&R
4	8CJMP5	70600038	70600038	P01	P01	P01	1	68	70240009	1	22K	22K-1/4W-5% CF-T&R
2	6531	6531	70466531	P10, P11, P20, P21	P10, P11, P20, P21	P10, P11, P20, P21	1	1.82KP1	70241078	1	4.7KW1	4.7K-1/4W-5% CF-T&R
1	5331HS	5331	70405331	Q1, Q2	Q1, Q2	Q1, Q2	1	2.7K	70240021	1	22W1	22-1W-5% MO-T&R
2	8414C	84140	70484140	Q100	Q100	Q100	1	10K	70240025	1	47FP	47FP-1/4W-5% FP-T&R
1	6531	6531	70466531	Q101, Q102	Q101, Q102	Q101, Q102	1	100K	70240034	1	47FP	47FP-1/4W-5% FP-T&R
1	6533	6534	70466533	Q103	Q103	Q103	1	22K	70240029	1	68	68-1/4W-5% CF-T&R
1	576	576	70460576	Q104	Q104	Q104	2	.33W5	70230003	1	150	150-1/4W-5% CF-T&R
2	74140	74140	70474140	Q105	Q105	Q105	1	4.7KW1	70210006	1	470	470-1/4W-5% CF-T&R
1	2N5400	5400	70460761	Q106, Q107	Q106, Q107	Q106, Q107	1	22W1	70210001	1	100FP	100FP-1/4W-5% FP-T&R
1	5331	5331	70405331	Q108	Q108	Q108	1	47FP	70240030	1	10K	10K-1/4W-5% CF-T&R
2	2N3904	3904	70463904	Q109	Q109	Q109	2	68	70240009	1	68K	68K-1/4W-5% CF-T&R
1	2N4249	4249	70464249	Q110, Q111	Q110, Q111	Q110, Q111	1	150	70240001	1	47K	47K-1/4W-5% CF-T&R
1	5332HS	5332	70405332	Q112	Q112	Q112	1	470	70240015	1	68K	68K-1/4W-5% CF-T&R
2	INR744	4744	70440102	CR1, CR2, CR3, CR4	CR1, CR2, CR3, CR4	CR1, CR2, CR3, CR4	1	100FP	70240096	1	1K	1K-1/4W-5% CF-T&R
1	CR5, CR6	CR5, CR6	CR5, CR6	CR5, CR6	CR5, CR6	CR5, CR6	1	10K	70240025	1	1K	1K-1/4W-5% CF-T&R

1	2.7K	2.7K	70240021	2.7K-1/4W-5%—CF-T&R R237
1	47K	47K	70240031	47K-1/4W-5%—CF-T&R R238
1	4.7K	4.7K	70240023	4.7K-1/4W-5%—CF-T&R R239
1	18	18	70240006	18—1/4W-5%—CF-T&R R240
1	220K	220K	70240036	220K-1/4W-5%—CF-T&R R241
1	4.7K	4.7K	70240023	4.7K-1/4W-5%—CF-T&R R242
1	47FP	47FP	70240090	47FP-1/4W-5%—FP-T&R R243
1	680	680	70240016	680-1/4W-5%—CF-T&R R244
1	4560	4560	70414560	4560 DUAL OP AMP IC U100
1	13080	13080	70413080	LM3080N CUSTOM SELECTED U101
1	4560	4560	70414560	4560 DUAL OP AMP IC U200
1	13080	13080	70413080	LM3080N CUSTOM SELECTED U201
