

COMBO POWER

BILL OF MATERIALS REPORT

BOARD NAME: CMBOPWR REPORT DATE: 25OCT02
 ASSEMBLY LEVEL NUMBER: 99099143 DESIGNER: TIM TAYLOR/FJE
 PROJECT NUMBER: P9800147

CBDS
 PART PART DESCRIPTION AND

** QTY. NAME VALUE NUMBER DEVICE DESIGNATIONS *****

1	72100867	72100867	72100867	PCB
2	.015	.015	70340010	.015MF----10%---50VDC---T/C---T&R C510, C519
2	.01CD	.01CD	70320248	.01MF----20%---1000VDC---CD--T&A C513, C536
8	.1	.1	70340100	.1MF----+80-20%--50VDC---AXL---T&R C506, C522, C526, C527, C528, C529, C532, C534
2	.1A250	.1A250	70320334	.1MFD 250 VOLT T&R CAP C504, C523
1	.1SF	.1SF	70330113	0.10 MFD 10% 100V STCK FILM T&A C520
1	.22SF2	.22SF2	70330114	0.22 MF 5% 100V STCK FILM t&a C516
8	.33W5	.33W5	70250003	.33--5W--10%--WW--AXL R523, R524, R525, R526, R529, R530, R531, R532
1	.8UH	.8UH	70519917	.8UH AIR CORE COIL / CS1200 L500
3	1.5K	1.5K	70240018	1.5K--1/4W--5%---CF--T&R R501, R546, R549
2	1.82KP1	1.82KP1	70241078	1.82K-1/4W--1%---CF--T&R R506, R509
3	100	100	70240010	100---1/4W--5%---CF--T&R R511, R518, R542
2	1000R35	1000R35	70320186	1000MF----20%---35VDC--EL--T&A C530, C535
2	100FP	100FP	70240096	100FP-1/4W--5%---FP--T&R R522, R528
2	100K	100K	70240034	100K--1/4W--5%---CF--T&R

R503, R547

2 100PF 100PF 70340054 100PF-----10%----50VDC---T/C---T&R
C501, C524

3 10K 10K 70240025 10K---1/4W--5%----CF--T&R
R514, R527, R537

2 10KW1 10KW1 70210018 10K---1W----5%----MO--T&R
R519, R536

2 10PF 10PF 70340050 10PF-----5%-----T/C---T&R
C503, C509

1 10R50L 10R50L 70320185 10MF-----20%----50VDC---LL--T&A
C517

1 13080 13080 70413080 LM3080N CUSTOM SELECTED
U502

1 13886 13886 70413886 SZ-13886-2 DUAL DIODE
CR516

1 180 180 70240012 180---1/4W--5%----CF--T&R
R533

2 1ASBPCB 1ASBPCB 70901712 1A SLO-BLOW 5X15MM FUSE T&R
F500, F501

2 1K 1K 70240017 1K---1/4W--5%----CF--T&R
R543, R545

1 1M 1M 70240039 1M---1/4W--5%----CF--T&R
R513

6 1N4003 1N4003 70464003 1N4003 200V SILICON DIODE
CR500, CR533, CR535, CR536, CR539, CR540

22 1N4148 4148 70464148 1N4148 75V 10MA SILICON DIODE
CR502, CR503, CR504, CR505, CR506,
CR507, CR508, CR510, CR513, CR515,
CR517, CR518, CR522, CR526, CR527,
CR528, CR529, CR530, CR531, CR532,
CR537, CR538

2 1N4744 4744 70440102 SZG40102 15V 5% ZENER DIODE
CR501, CR534

2 1SS142 1SS142 70400142 1ss142 250v SILICON DIODE
CR512, CR520

1 2.2R50 2.2R50 70320180 2.2MF-----20%----50VDC---EL--T&A
C508

2 2.2R50NP 2.2R50NP 70320184 2.2MF-----20%----50VDC---NP--T&A
C502, C521

2 2.7K 2.7K 70240021 2.7K--1/4W--5%----CF--T&R
R540, R544

2 2.7KW1 2.7KW1 70210016 2.7K--1W----5%----MO--T&R
R500, R551

1 22K 22K 70240029 22K---1/4W--5%----CF--T&R
R508

8 22R50 22R50 70320181 22MF-----20%----50VDC---EL--T&A
C500, C505, C507, C514, C515, C525,
C531, C533

8 250STW 70901856 70901856 SPCR, 1/4,R(#4),.187 SW,AL
SO1, SO2, SO3, SO4, SO5, SO6, SO7, SO8

1 33 33 70240004 33----1/4W--5%----CF--T&R
R516

2 33K 33K 70240030 33K---1/4W--5%----CF--T&R
R505, R548

1 39PF 39PF 70340052 39PF-----50VDC----T/C----T&R
C511

3 4.7FP 4.7FP 70240094 4.7FP-1/4W--10%----FP--T&R
R502, R550, R552

2 4.7K 4.7K 70240023 4.7K--1/4W--5%----CF--T&R
R553, R554

2 4560 4560 70414560 4560 DUAL OP AMP IC
U500, U501

2 470 470 70240015 470---1/4W--5%----CF--T&R
R517, R538

2 4700R63 4700R63 70320146 4700MF----10%----63VDC---EL--R/S
C512, C518

4 47K 47K 70240031 47K---1/4W--5%----CF--T&R
R504, R507, R510, R535

2 5.6W5 5.6W5 70250026 5.6--5W--10%--WW--AXL
R520, R534

1 5331 5331 70405331 SJE-5331 CASE-77 NPN

Q501

1 5332 5332 70405332 SJE-5332 CASE-77 PNP

Q512

4 560 560 70240050 560---1/4W--5%---CF--T&R

R512, R515, R539, R541

1 6.8KW2 6.8KW2 70250052 6.8K---2W---5%---MF---T&R

R521

1 6531 6531 70466531 MPS-6531 TO92 NPN TRANS. T&A

Q506

1 6534 6534 70466533 MPS-6533/34 TO-92 PNP TRANS T&A

Q507

4 73100 73100 70473100 SJ-73100, 3 AMP, 100V, METRIC TO-3, PNP TRANS

Q508, Q509, Q510, Q511

1 7815T220 7815 70400340 7815 15V 1A POS TO-220 RG

Q513

1 7915T220 7915 70400320 7915 15V 1A NEG TO 220 RG

Q514

4 83100 83100 70483100 SJ-83100, NPN, 3 AMP, 100V, METRIC TO-3 TRANS

Q502, Q503, Q504, Q505

4 8CJMP5 70600038 70600038 8C PRE-TIN .156-5" JUMPER

P511, P512, P513, P514

1 8SRHDRL 73717010 73717010 8 PIN HEADER W/LOCK

P515

18 EYE090 73700219 73700219 EYELET .090-DRILL-HOLE .068-EYELET-HOLE

EY100, EY101, EY102, EY103, EY104,
EY105, EY106, EY107, EY108, EY109,
EY110, EY111, EY112, EY113, EY114,
EY115, EY116, EY117

4 FMPU 73711811 73711811 M118-171 C.B. FEMALE MOLEX PIN

P501, P506, P508, P510

4 HS2522 98002522 98002522 3/8" HEATSINK PUNCHED

HS501, HS502, HS503, HS504

1 HS3002 98003002 98003002 L-BAR HEATSINK 1400BG/240SC

HS500

1 J174 J174 70460174 J-174 30V TO-92 P-CHAN FET T&A

Q500

25	J325	J	70600005	22GA JUMPER WIRES T&R
				JP300, JP301, JP302, JP303, JP304, JP305, JP306, JP307, JP308, JP309, JP310, JP311, JP312, JP313, JP314, JP315, JP316, JP317, JP318, JP319, JP320, JP321, JP322, JP323, JP324
50	J35	J	70600005	22GA JUMPER WIRES T&R
				JP350, JP351, JP352, JP353, JP354, JP355, JP356, JP357, JP358, JP359, JP360, JP361, JP362, JP363, JP364, JP365, JP366, JP367, JP368, JP369, JP370, JP371, JP372, JP373, JP374, JP375, JP376, JP377, JP378, JP379, JP380, JP381, JP382, JP383, JP384, JP385, JP386, JP387, JP388, JP389, JP390, JP391, JP392, JP393, JP394, JP395, JP396, JP397, JP398, JP399
75	J4	J	70600005	22GA JUMPER WIRES T&R
				JP400, JP401, JP402, JP403, JP404, JP405, JP406, JP407, JP408, JP409, JP410, JP411, JP412, JP413, JP414, JP415, JP416, JP417, JP418, JP419, JP420, JP421, JP422, JP423, JP424, JP425, JP426, JP427, JP428, JP429, JP430, JP431, JP432, JP433, JP434, JP435, JP436, JP437, JP438, JP439, JP440, JP441, JP442, JP443, JP444, JP445, JP446, JP447, JP448, JP449, JP450, JP451, JP452, JP453, JP454, JP455, JP456, JP457, JP458, JP459, JP460, JP461, JP462, JP463, JP464, JP465, JP466, JP467, JP468, JP469, JP470, JP471, JP472, JP473, JP474
50	J5	J	70600005	22GA JUMPER WIRES T&R
				JP500, JP501, JP502, JP503, JP504, JP505, JP506, JP507, JP508, JP509, JP510, JP511, JP512, JP513, JP514, JP515, JP516, JP517, JP518, JP519, JP520, JP521, JP522, JP523, JP524, JP525, JP526, JP527, JP528, JP529, JP530, JP531, JP532, JP533, JP534, JP535, JP536, JP537, JP538, JP539, JP540, JP541, JP542, JP543, JP544, JP545, JP546, JP547, JP548, JP549
41	J6	J	70600005	22GA JUMPER WIRES T&R
				JP600, JP601, JP602, JP603, JP604, JP605, JP606, JP607, JP608, JP609, JP610, JP611, JP612, JP613, JP614, JP615, JP616, JP617, JP618, JP619, JP620, JP621, JP622, JP623, JP624, JP625, JP626, JP627, JP628, JP629, JP630, JP631, JP632, JP633, JP634, JP635, JP636, JP637, JP638, JP639, JP640
16	J7	J	70600005	22GA JUMPER WIRES T&R
				JP700, JP701, JP702, JP703, JP704, JP705, JP706, JP707, JP708, JP709, JP710, JP711, JP712, JP713, JP714, JP715

16 J8 J 70600005 22GA JUMPER WIRES T&R
 JP800, JP801, JP802, JP803, JP804,
 JP805, JP806, JP807, JP808, JP809,
 JP810, JP811, JP812, JP813, JP814, JP815

4 MMPU 73711812 73711812 R93-12 PN C.B. MALE MOLEX PIN
 P502, P505, P507, P509

2 MR502CD MR502CD 70400502 MR502/1N5402 200V, 3A SILICON DIODE - CATH DOWN
 CR509, CR525

4 MR752CD MR752CD 70400752 MR752/P600D 200V, 6A SIL DIODE -CATH DOWN
 CR511, CR514, CR519, CR524

1 RASN6165 71466165 71466165 JK R/A 12.5MM NIN STEREO -88
 J500

1 SAC187 SAC187 70400187 SAC187 200V TO220 TRIAC
 CR521

1 SBS14 SBS14 70460014 SBS14 8V T0-92 BI-DIRECTIOAL SWITCH T&A
 CR523

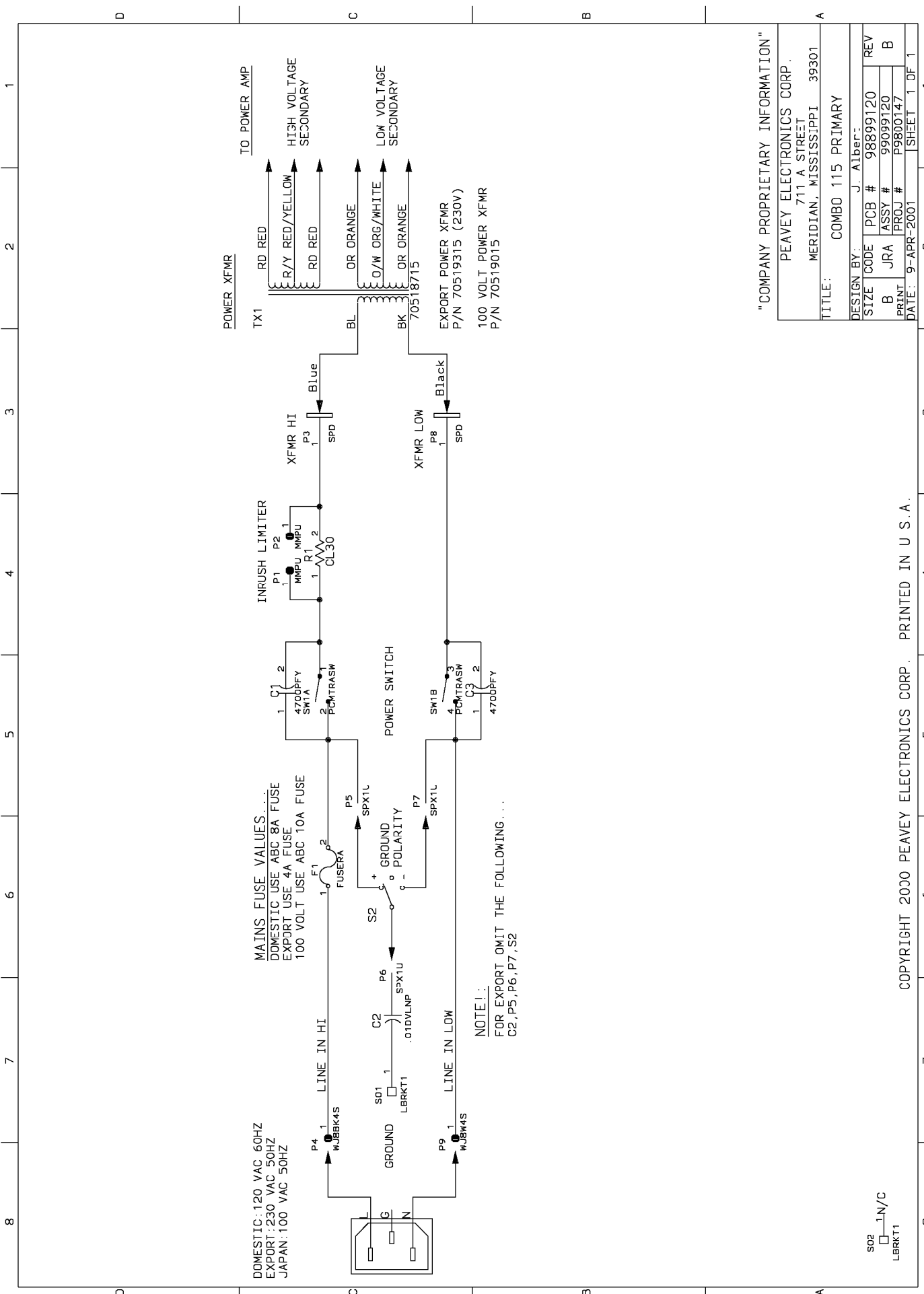
4 SPX1 SPX1 73717003 1 STAKE PIN
 J505, J506, J507, J508

2 WJ8BL12S WJ8BL12S 91090474 BLUE--18G--12"--CPT/CPT
 J501, J503

1 WJ8W8S WJ8W8S 91090502 WHITE-18GA-8"-CPT TO 250 SPADE
 J504

1 WJ8Y12S WJ8Y12S 91090320 YELLOW--18G--12"--CPT/250SPD
 J502

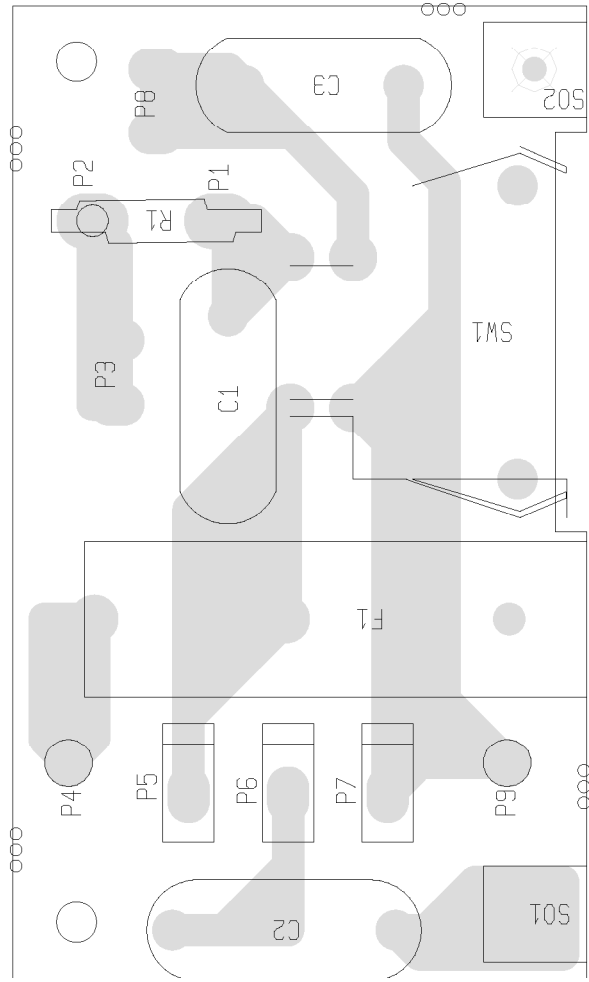
 * END OF BILL OF MATERIALS REPORT *



"COMPANY PROPRIETARY INFORMATION"

PEAVEY ELECTRONICS CORP. 711 A STREET MERIDIAN, MISSISSIPPI 39301	
TITLE: COMBO 115 PRIMARY	
DESIGN BY: J. Alber	
SIZE	PCB # 98899120
B	ASSY # 99099120
PRINT	PROJ # P9800147
DATE: 9-APR-2001	SHEET 1 OF 1

S02
 □ LN/C
 LBRKT1



COMBO 2000 PRIMARY BD.

C2 (.01 DVL) P5. P6. P7 NOT USED ON EXPORT

BILL OF MATERIALS REPORT

BOARD NAME: C2KPRIM REPORT DATE: 10DEC99
ASSEMBLY LEVEL NUMBER: 99099120 DESIGNER: FREDDIE EAVES
PROJECT NUMBER: P9700147

CBDS
PART PART DESCRIPTION AND

** QTY. NAME VALUE NUMBER DEVICE DESIGNATIONS *****

1 98899120 98899120 C2KPRIM PCB

1 .01DVLNP .01DVLNP 70320104 .01 MFD 125VDC DVL MYLAR +0-20%

C2

2 4700PFY 4700PFY 70320125 4700PF, 400VAC EXP LINE CAP Y

C1, C3

1 CL30 CL30 70240202 INRUSH CURRENT LIMITER

R1

1 FUSERA 70901429 70901429 EXT. FUSEHOLDER, PC MT

F1

2 LBRKT1 71500238 71500238 #74 L-BRACKET W/4-40 HOLE

SO1, SO2

2 MMPU 73711812 73711812 R93-12 PN C.B. MALE MOLEX PIN

P1, P2

1 PCMTRASW PCMTRASW 71322377 PC MOUNT PIGHT ANGLE POWER SWITCH

SW1

2 SPD 73716194 73716194 .250 PC MNT SPADE .093 PCB

P3, P8

3 SPX1U SPX1U 73717003 1 STAKE PIN

P5, P6, P7

1 WJ8BK4S WJ8BK4S 91090508 BLACK-18GA-4"-CPT TO 250 SPADE

P4

1 WJ8W4S WJ8W4S 91090470 WHITE--18G--4"--CPT/250SPD

P9

* END OF BILL OF MATERIALS REPORT *
