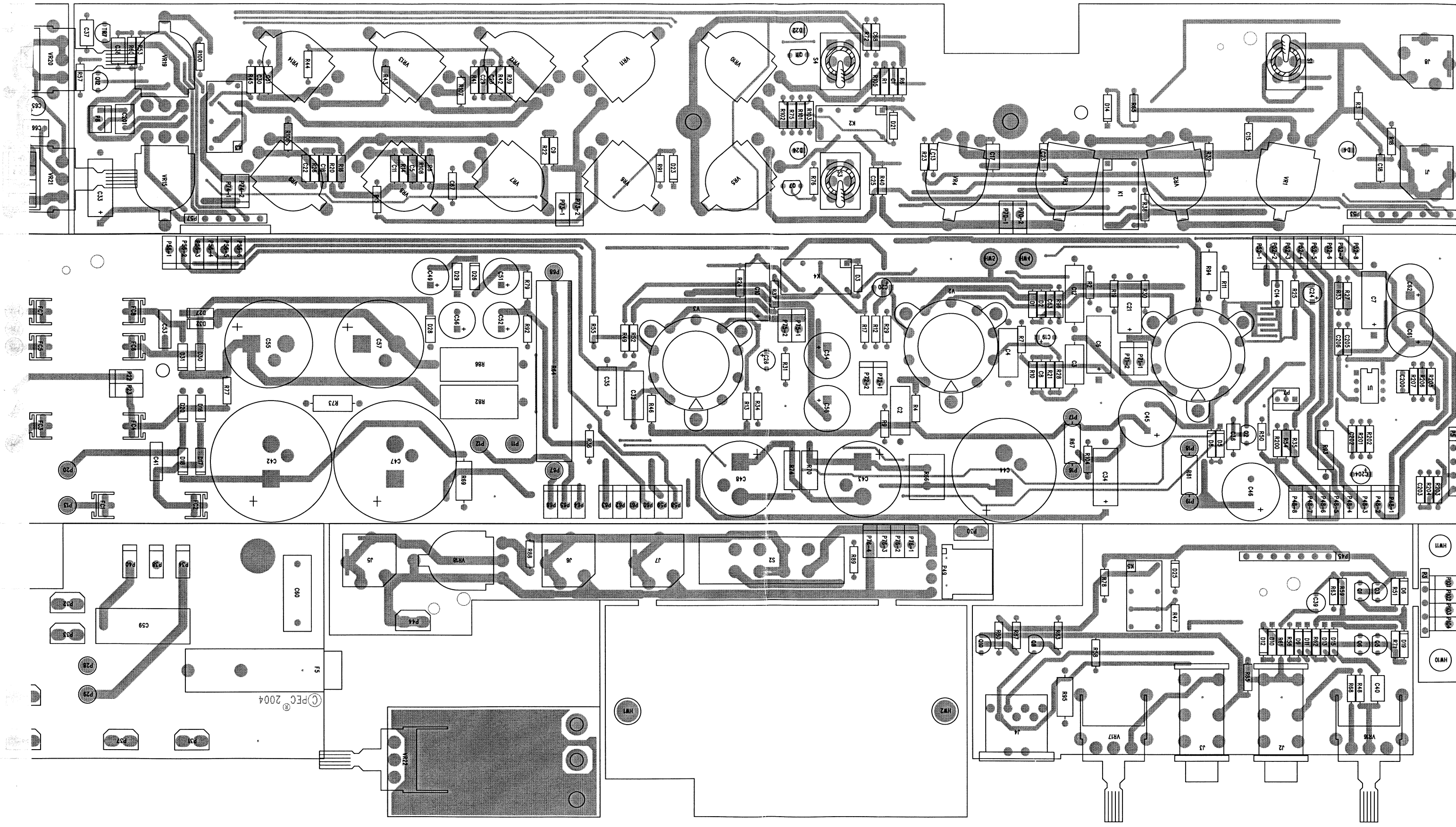


TRANSFORMERS
 70518719-Domestic 120V
 70519019-Japan 100V
 70518705-Export 220-230/240V

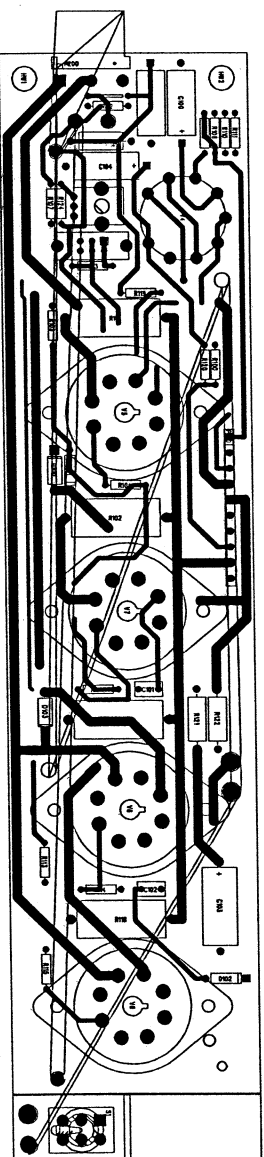
BUILT UNDER US PATENT NOS. 4,890,331 and 5,197,102.
 Copyright Peavey Electronics Corporation 2005



JSX 212 COMBO
 JSX 212 PREAMP / POWER SUPPLY
 Eng JOHN C. FLEISCH



PEC 2004



72120224B.pcb - Mon Feb 28 07:20:21 2005

BILLOF MATERIAL REPORT

REPORT DATE/TIME: 10/4/2006 4:23:42 PM
 BOARD NAME: JSX 212 POWER AMP ASSEMBLY LEVEL NUMBER: 29061450
 PROJECT NUMBER: P0300073 DESIGNER: FJR

Qty	Part#	Description	Reference	Designators
2	30210003	100 1W 5% MO AXL	R121	R122
1	30210005	22K 1W 5% MO AXL	R109	
1	30240015	470 1/4W 5% CF AXL	R110	
1	30240023	4700 1/4W 5% CF AXL	R119	
4	30240025	10K 1/4W 5% CF AXL	R104	R105 R114 R115
2	30240029	22K 1/4W 5% CF AXL	R103	R113
3	30240032	68K 1/4W 5% CF AXL	R100	R108 R120
1	30240034	100K 1/4W 5% CF AXL	R106	
2	30240036	220K 1/4W 5% CF AXL	R107	R112
1	30240038	470K 1/4W 5% CF AXL	R111	
1	30240057	12K 1/4W 5% CF AXL	R124	
1	30241008	5.62K 1/4W 1% MF AXL	R123	
1	30320014	100UF 25V 20% EL AXLH	C105	
3	30320105	0.047UF 400V 10% PES AXL	C100	C103 C104
2	30320269	100PF 100V 5% NPO RAD		C101 C102
2	30402873	SR2873 2KV, 250MA DIODE	D100	D103
2	30464003	1N4003 200V 1A SI DIODE		D101 D102
1	30600133	10C .156STRP SCON 5"	P100	
1	30600136	0 OHM 22GA JMPR AXL	R116	
1	30806631	TUBE SKT 9PIN CERAMIC	V4	
4	30806632	TUBE SKT OCTAL EL34	V5	V6 V7 V8

2	70901890	STND .375 T4-40SW,AL,ST			HW10 HW11
1	71190303	1M20A	SNGL 16MM	SPD	VR1
1	71190311	1M5A	SNGL 16MM	SPD	VR10
7	71190334	250KB	SNGL 16MM	SPD	VR7 VR8 VR9 VR12 VR13 VR14 VR15
3	71190336	10KB	SNGL 16MM	SPD	VR3 VR18 VR19
2	71190338	100K20A	SNGL 16MM	SPD	VR6 VR11
2	71190339	250K20A	SNGL 16MM	SPD	VR2 VR4
1	71190362	50K20A	SNGL 16MM	SPD	VR5
2	71190517	100KBB	SNGL 16MM	HOR	VR16 VR17
2	71190522	1M5A	SNGL 16MM	HOR	VR20 VR22
1	71190523	10K20C	SNGL 16MM	HOR	VR21
3	71322277	RELAY 12V DPDT .5A			K3 K4 K5
1	71322328	SWITCH 2P3T SLIDE PC V			S2
2	71322378	RELAY 12V DPDT LOW MIC			K1 K2
1	71322475	SWITCH 2P3TSP TOGGLE PC VT			S1
2	71322476	SWITCH 2P2T TOGGLE PC VT			S3 S4
2	71466165	JK RA 12.5MM NIN STEO-88			J2 J3
3	71466214	2 TIP HID JACK NINS W/SPD			J5 J6 J7
2	71466217	STEREO HID JACK NINS W/SPD			J1 J8
1	71466226	CONN 7P RA PCMNT DIN W/ 4 MNT. HOLES			J4
2	71600254	50 5W 10% WW AXLH LS			R82 R86
3	73711811	PIN-F .093 MOLEX PC-MNT			P24 P25 P27
14	73711812	PIN-M .093 MOLEX PC-MNT			P11 P12 P13 P16 P17 P18 P19 P20 P21 P26 P28 P29 P67 P68
8	73716194	SPADE .250 PC MNT .093			P30 P31 P32 P33 P35 P37 P41 P44
60	73717003	1 STAKE PIN .045 .625 TIN			P22 P23 P34 P38 P40 P48-1 P48-2 P48-3 P48-4 P48-5 P48-6 P48-7

P48-8 P52-1 P52-2 P52-3
P52-4 P52-5 P52-6 P52-7
P52-8 P56-1 P56-2 P56-3
P56-4 P56-5 P56-6 P58
P59 P60 P61 P62
P63 P64 P65 P66
P70-1 P70-2 P71-1 P71-2
P72-1 P72-2 P73-1 P73-2
P74-1 P74-2 P75-1 P75-2
P76-1 P76-2 P76-3 P76-4
P77-1 P77-2 P77-3 P77-4
P101 P102 P103 P104

2	73717013	3	HDR V SR .100" TIN LK	P7 P8
1	73719109	4	HDR H SR .156" TIN LK	P49
5	PCB_PAD100		PCB PAD .100" OD .053" ID	HW3 HW6 HW7 HW8 HW9
6	TAB_VCI		????????????????????????????????	TAB9 TAB12 TAB16 TAB17 TAB18 TAB19

END OF BILL OF MATERIAL REPORT

BILL OF MATERIAL REPORT

REPORT DATE/TIME: 6/1/2005 5:08:38 PM

BOARD NAME: JSX 212 COMBO PREAMP ASSEMBLY LEVEL NUMBER: 99061461

PROJECT NUMBER: P0400073 DESIGNER: JTH

Qty.	Part #	Description	Reference Designators
1	70210000	1K 1W 5% MO AXL	R95
2	70210005	22K 1W 5% MO AXL	R67 R81
4	70210008	220K 1W 5% MO AXL	R69 R70 R73 R74
2	70210011	47 1W 5% MO AXL	R93 R94
1	70240001	150 1/4W 5% CF AXL	R206
1	70240008	47 1/4W 5% CF AXL	R57
1	70240010	100 1/4W 5% CF AXL	R56
7	70240013	270 1/4W 5% CF AXL	R38 R65 R72 R80 R91 R101 R202
2	70240015	470 1/4W 5% CF AXL	R48 R61
2	70240017	1K 1/4W 5% CF AXL	R60 R203
6	70240018	1500 1/4W 5% CF AXL	R28 R29 R30 R33 R34 R55
1	70240019	820 1/4W 5% CF AXL	R100
4	70240023	4700 1/4W 5% CF AXL	R76 R77 R103 R205
9	70240025	10K 1/4W 5% CF AXL	R15 R16 R32 R41 R43 R47 R78 R83 R87
1	70240026	56K 1/4W 5% CF AXL	R6
1	70240027	15K 1/4W 5% CF AXL	R75
1	70240028	18K 1/4W 5% CF AXL	R22
4	70240029	22K 1/4W 5% CF AXL	R3 R18 R85 R88

4	70240031	47K	1/4W	5%	CF	AXL	R9 R54 R107 R201
2	70240032	68K	1/4W	5%	CF	AXL	R58 R89
8	70240034	100K	1/4W	5%	CF	AXL	R8 R23 R39 R49 R50 R62 R68 R204
2	70240035	150K	1/4W	5%	CF	AXL	R14 R42
8	70240036	220K	1/4W	5%	CF	AXL	R1 R20 R27 R51 R71 R104 R200 R207
6	70240038	470K	1/4W	5%	CF	AXL	R10 R21 R25 R52 R96 R106
6	70240039	1M	1/4W	5%	CF	AXL	R17 R19 R24 R31 R53 R92
2	70240040	2.2M	1/4W	5%	CF	AXL	R40 R105
1	70240048	39K	1/4W	5%	CF	AXL	R108
1	70240065	680K	1/4W	5%	CF	AXL	R12
4	70240090	47	1/4W	5%	FP	AXL	R35 R36 R59 R63
4	70240151	100K	1/4W	1%	MF	AXL	R2 R4 R13 R46
1	70241008	5.62K	1/4W	1%	MF	AXL	R79
2	70241035	150K	1/4W	1%	MF	AXL	R7 R11
1	70241093	3.9K	1/4W	5%	CF	AXL	R102
4	70241094	240K	1/4W	5%	CF	AXL	R26 R37 R44 R45
1	70250019	400	10W	10%	FP	AXLH	R64
1	70250181	4K	5W	10%	WW	AXLH	R66
1	70320104	0.01UF	125V-20%	"X"	RADH		C60
4	70320105	0.047UF	400V 10%	PES	AXL		C6 C7 C10 C33
6	70320181	22UF	50V 20%	EL	RAD		C19 C20 C24 C26 C65 C204
1	70320184	2.2UF	50V 20%	ELN	RAD		C39

1	70340063	0.47UF 50V 20% ELL AXL	C21
2	70340100	0.1UF 50V 80-20% Z5U AXL	C205 C206
4	70340101	0.1UF 50V 10% X7R AXL	C17 C37 C38 C40
2	70400757	1N757A 9.1V 5% ZENER	D5 D8
2	70400933	2SA933ASLN PNP LN RAD	Q5 Q6
2	70401740	2SC1740SLN NPN LN RAD	Q1 Q3
1	70414560	4560 DUAL OPAMP DIP8	U1
1	70450034	RED LED T1 BULK	D22
1	70450035	GRN LED T-1 BULK	D4
1	70450036	YEL LED T1 BULK	D24
1	70460097	MAC97-6 TRIAC TO-92 T&A	TR7
2	70460174	J174 JFET P 30V TO92 RAD	Q2 Q12
7	70464003	1N4003 200V 1A SI DIODE	D26 D27 D28 D29 D30 D31 D32
4	70464007	1N4007 1KV, 1A, SI DIODE	D16 D17 D18 D20
15	70464148	1N4148 75V 10MA DIODE	D1 D2 D3 D6 D9 D10 D11 D12 D13 D14 D15 D19 D21 D23 D25
4	70466531	MPS-6531 40V TO92 NPN RAD	Q7 Q8 Q10 Q11
2	70600007	5C .156 STRP STRP 5" JMP	P3 P5
2	70600018	8C .156 STRP SRCON 5"	P45 P53
1	70600134	6C .156 STRP SRCON 5"	P57
3	70806614	TUBE SKT 9PIN SNAP-IN	V1 V2 V3
2	70900788	STND .125 T4-40,SW,AL,ST	HW4 HW5
2	70900935	STND .187 T4-40,SW,NB,ST	HW1 HW2
8	70901183	FUSECLIP, PC MT RAD	FC1 FC2 FC3 FC4 FC5 FC6 FC7 FC8
1	70901429	EXT. FUSEHOLDER, PC MT	F5

4	70320186	1000UF	35V 20% EL	RAD	C54 C58 C61 C62
2	70320248	0.01UF	1000V 80-20%	Z5U RAD	C41 C53
4	70320264	100UF	63V 20% EL	RAD	C49 C51 C52 C56
1	70320281	1000PF	630V 10% PE	AXL	C3
2	70320282	0.01UF	400V 10% PE	AXL	C12 C35
3	70320283	0.022UF	400V 10% PE	AXL	C2 C4 C32
1	70320298	0.1UF	275V 20% "X"	RADH	C59
1	70320334	0.1UF	250V 10% PE	AXL	C34
2	70320339	22UF	450V 20% EL	RADH	C45 C46
1	70320410	100UF	500V 20% EL	SNPHT3	C44
2	70320443	4700UF	35V 20% EL	SNPHT3	C55 C57
2	70320511	680UF	350V 20% EL	SNPHT3	C42 C47
2	70320512	220UF	350V 20% EL	SNPHT3	C43 C48
1	70330113	0.1UF	100V 10% PPS	RAD	C14
1	70330116	4700PF	50V 5% PE	RAD	C200
1	70330127	1800PF	50V 5% PE	RAD	C64
1	70330129	0.1UF	50V 5% PE	RAD	C201
1	70330133	0.12UF	50V 5% PE	RAD	C66
4	70340000	1000PF	50V 10% NPO	AXL	C11 C29 C63 C67
4	70340004	2200PF	50V 10% X7R	AXL	C1 C5 C28 C68
2	70340012	0.022UF	50V 10% X7R	AXL	C9 C23
1	70340018	0.068UF	50V 10% X7R	AXL	C36
1	70340052	39PF	50V 5% NPO	AXL	C18
7	70340054	100PF	50V 10% NPO	AXL	C15 C16 C22 C30 C31 C202 C203
2	70340057	270PF	50V 10% NPO	AXL	C13 C25
1	70340058	470PF	50V 10% NPO	AXL	C8