

PV71466832

PV71466837

NOTE: THIS IS A BASE SCHEMATIC FOR THREE ASSEMBLIES OF BARE BOARD # 98891333. SEE BOARD LAYOUTS FOR ASSEMBLY DIFFERENCES.

"COMPANY PROPRIETARY INFORMATION"

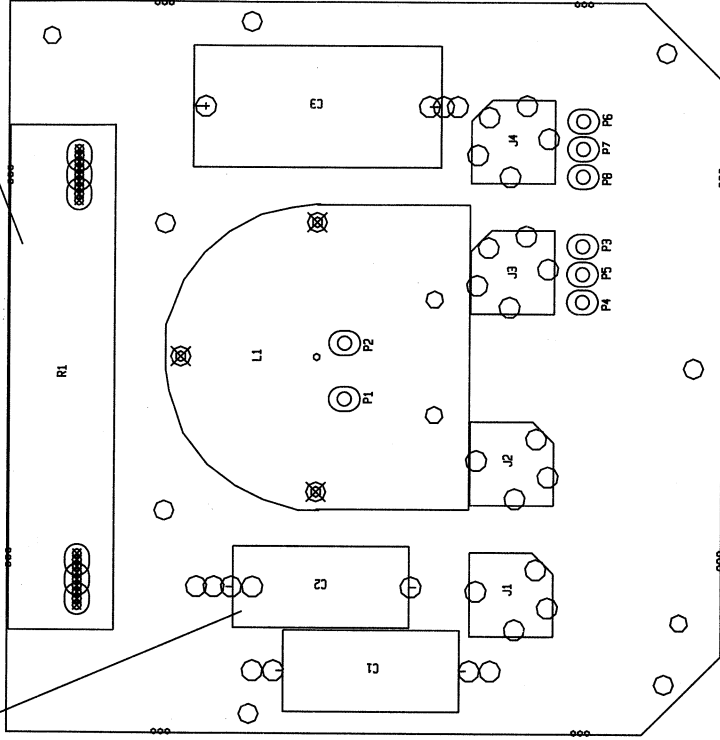
PEAVEY ELECTRONICS CORP.
711 A STREET
MERIDIAN, MS 39061

TITLE
SP-5TI/DS1502/1545T

SIZE B	CODE B	NUMBER 98891333	REV
DATE 25-AUG-95	#81500009	SHEET 2	1 OF 1

Insert a jumper in place of C2 for:
DS1502 ONLY

DO NOT INSERT R1 for:
DS1502 ONLY



SP-5TI/DS1502 CROSSOVER BD.

For DS1502, change as follows:

- L1 = 450UH
- C1 = 2.2UF
- C3 = 18UF

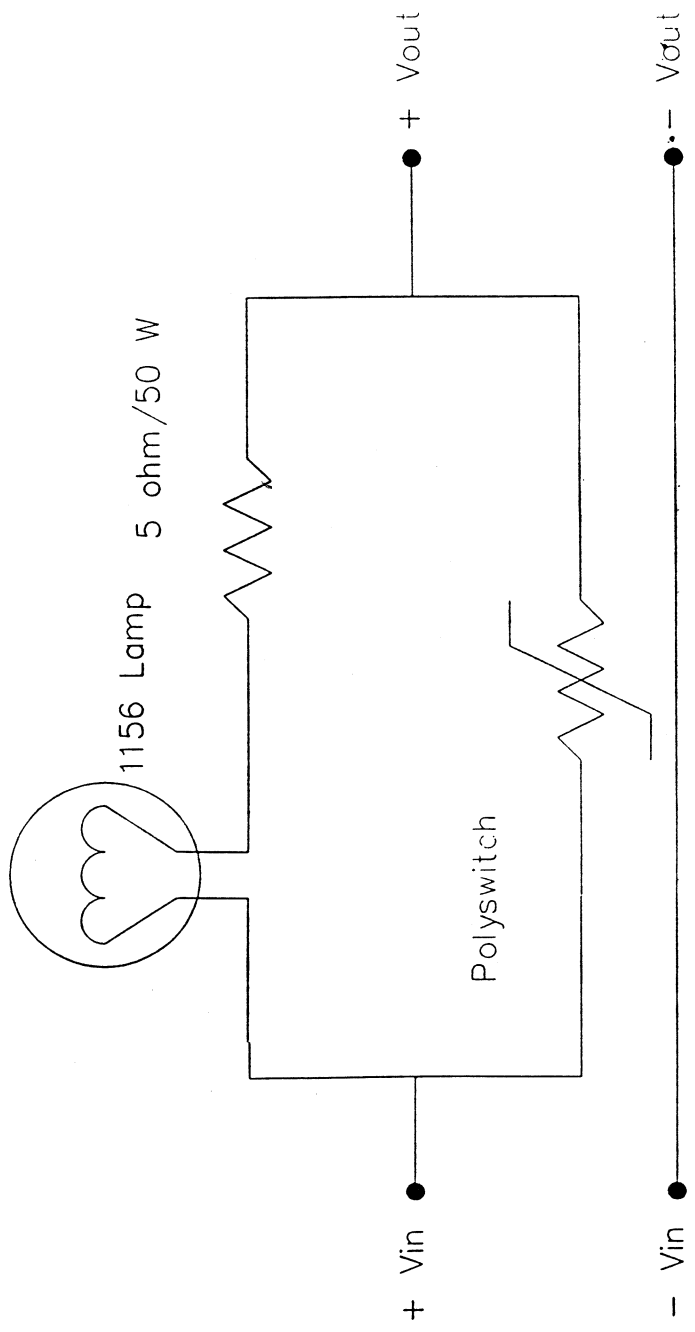
For 1545TI, change as follows:

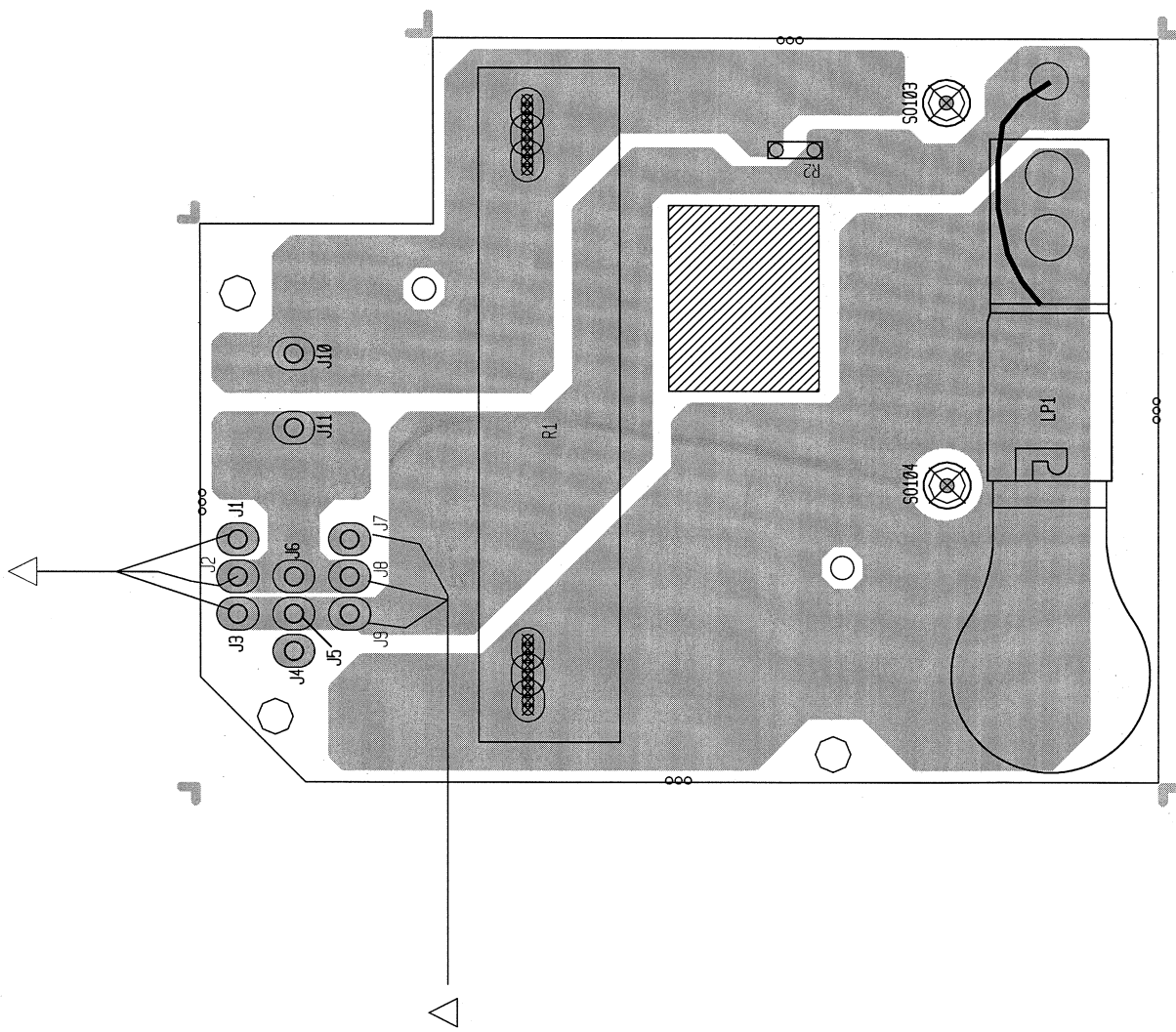
- L1 = 350UH P/N 96000177
- L2 = 2.0MH P/N 70519704 OR P/N 70519701
- C1 = 4.0UF P/N 70320041
- C2 = 4.7UF P/N 70330002
- C3 = 25UF P/N 70320101
- R1 = 50hms 50W P/N 70250070

BOARD NAME: SP-5TI
ASSEMBLY LEVEL NUMBER: 99091331

PARTS LIST IS FOR BASE DESIGN.
SEE BD. LAYOUT FOR DIFFERENCES.

PART	QTY.	NAME	VALUE	NUMBER	DESCRIPTION AND DEVICE DESIGNATIONS
2	3	3A250M	3.3A250M	70320078	3.3 MFD - 250V CAPACITOR -AXIAL C1, C2
1	33A200	33A200	70320047		33MFD 200VDC LYTIC - AXIAL LEAD C3
2	HIDMNI	71466032	71466032		11J1255 2TP HDJCK NINS PC J1, J2
2	HIDSI	71466037	71466037		N114 BPC STEREO HDJCK INSA J3, J4
1	273UH	273UH	96000179		273UH AIR CORE IND. ACOS. WAVE L1
2	MMP	MMP	73711812		R93-12 PN C.B. MALE MOLEX PIN P1, P2
1	FMP	FMP	73711811		M118-171 C.B. FEMALE MOLEX PIN P3
3	MMP	MMP	73711812		R93-12 PN C.B. MALE MOLEX PIN P4, P5, P6
2	FMP	FMP	73711811		M118-171 C.B. FEMALE MOLEX PIN P7, P8
1	2.7W50	2.7W50	70250078		2.7-50W-108-WW-R/D R1





△ DO NOT INSERT these parts for SP2 / SP4XT.
 DO NOT INSERT J1, J2, J3, J4, J5 & J6 for SP5XT.