

BILL OF MATERIALS REPORT

BOARD NAME: TTPRIMARY REPORT DATE: 24NOV99

HUGHES ASSEMBLY LEVEL NUMBER: 99053030 DESIGNER: TIM TAYLOR/JAMES

PROJECT NUMBER: P9800153

CBDS
PART PART DESCRIPTION AND

** QTY. NAME VALUE NUMBER DEVICE DESIGNATIONS *****

1 98853030 98853030 98853030 PCB

1 .01DVLNP .01DVLNP 70320104 .01 MFD 125VDC DVL MYLAR +0-20%

C2

1 .1X2 70320298 70320298 .1MF 250VAC X2 20%

C1

1 15MMSOB 70901889 70901889 SPACER, 15MM, .187 BRASS

STO2

1 15MSOW 70901837 70901837 SPACER, 15mm-r(#4) .187 swage alum.

STO1

1 CL30 CL30 70240202 INRUSH CURRENT LIMITER

R1

2 CLP1183 CLP1183 70901183 FUSECLIP, PC MT - T&A

FC1, FC2

2 JMP JMP 70600005 22 GA. JUMPER WIRE T&R

JP1, JP2

4 SPD 73716194 73716194 .250 PC MNT SPADE .093 PCB

P1, P2, P3, P4

3 SPX1U SPX1U 73717003 1 STAKE PIN

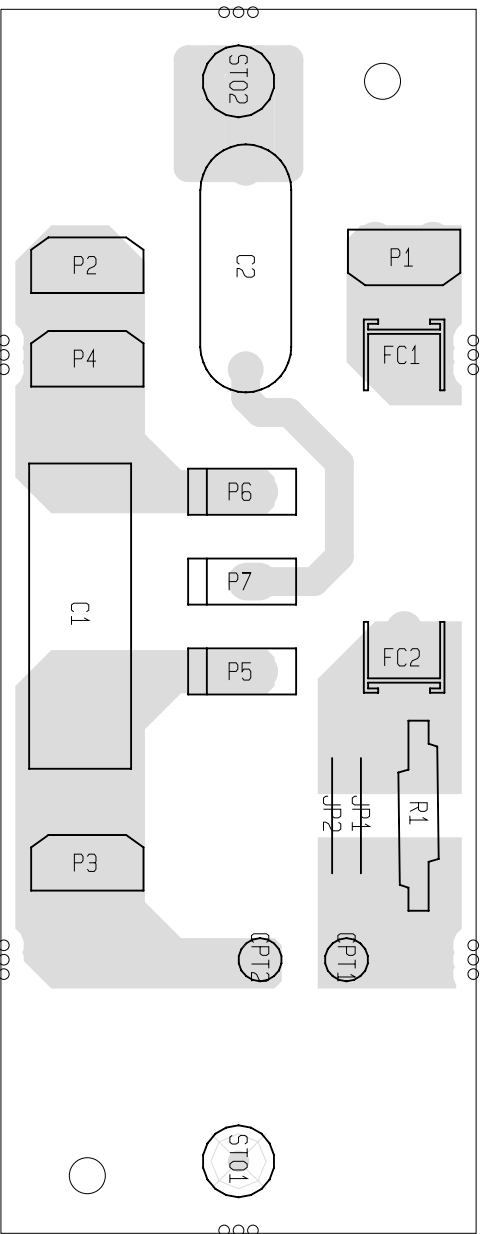
P5, P6, P7

2 WJ8BK6SI WJ8BK6SI 91090305 BK-18G-6"-CPT-SI187

CPT1, CPT2

* END OF BILL OF MATERIALS REPORT *

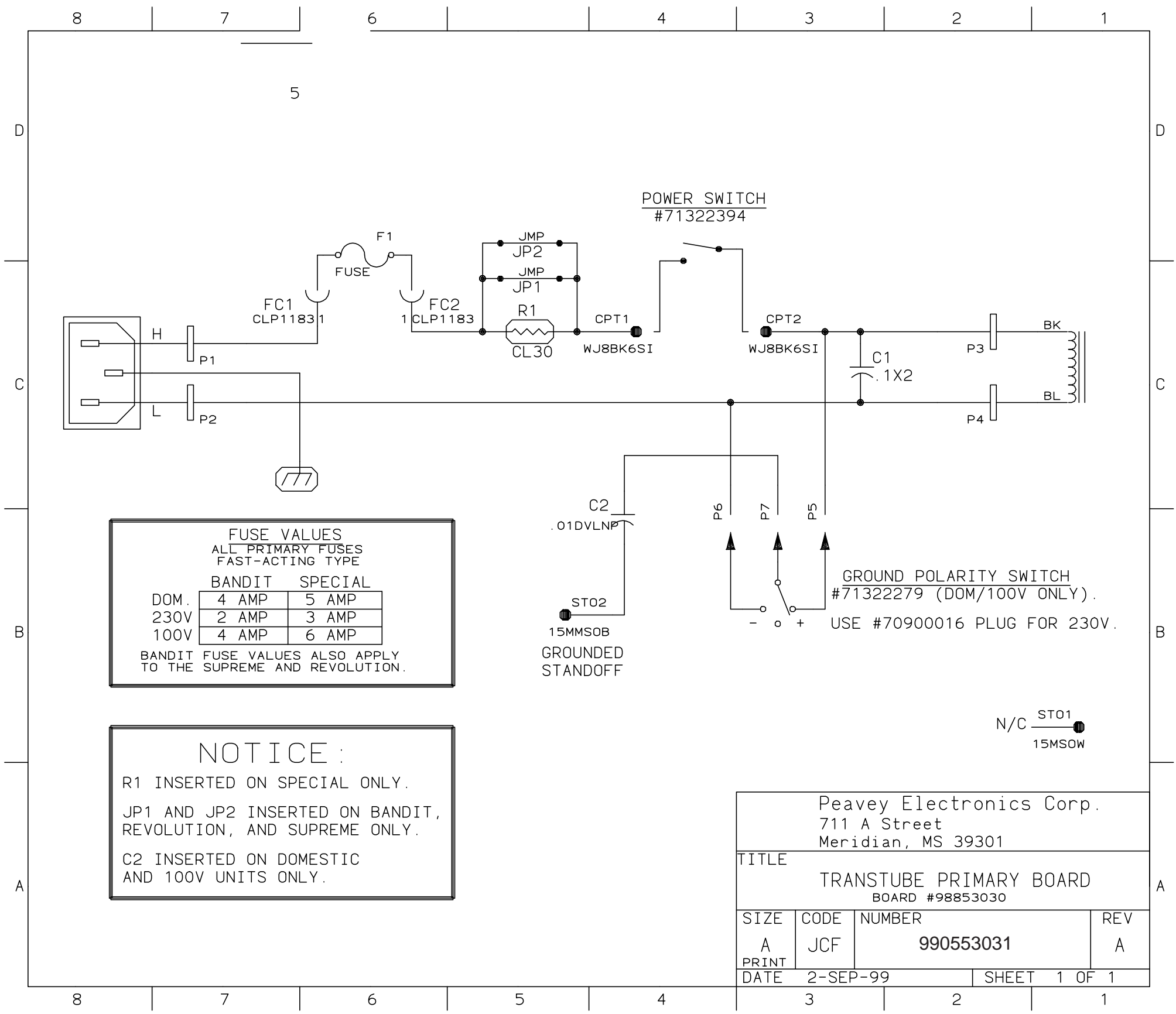
PARTS NOT PLACED
 IN
 99053031
 C2, R1
 P5, P6, P7



PARTS NOT PLACED
 IN
 99053032
 JP1, JP2

PARTS NOT PLACED
 IN
 99053033
 C2, JP1, JP2
 P5, P6, P7

	ASS'Y P/N
BANDIT / REV DOM. PRIMARY	99053030
BANDIT / REV EXP. PRIMARY	99053031
SPECIAL DOM. PRIMARY	99053032
SPECIAL EXP. PRIMARY	99053033



FUSE VALUES
ALL PRIMARY FUSES
FAST-ACTING TYPE

	BANDIT	SPECIAL
DOM.	4 AMP	5 AMP
230V	2 AMP	3 AMP
100V	4 AMP	6 AMP

BANDIT FUSE VALUES ALSO APPLY TO THE SUPREME AND REVOLUTION.

NOTICE :

R1 INSERTED ON SPECIAL ONLY.

JP1 AND JP2 INSERTED ON BANDIT, REVOLUTION, AND SUPREME ONLY.

C2 INSERTED ON DOMESTIC AND 100V UNITS ONLY.

Peavey Electronics Corp.
711 A Street
Meridian, MS 39301

TITLE
TRANSTUBE PRIMARY BOARD
BOARD #98853030

SIZE	CODE	NUMBER	REV
A	JCF	990553031	A

PRINT DATE 2-SEP-99 SHEET 1 OF 1