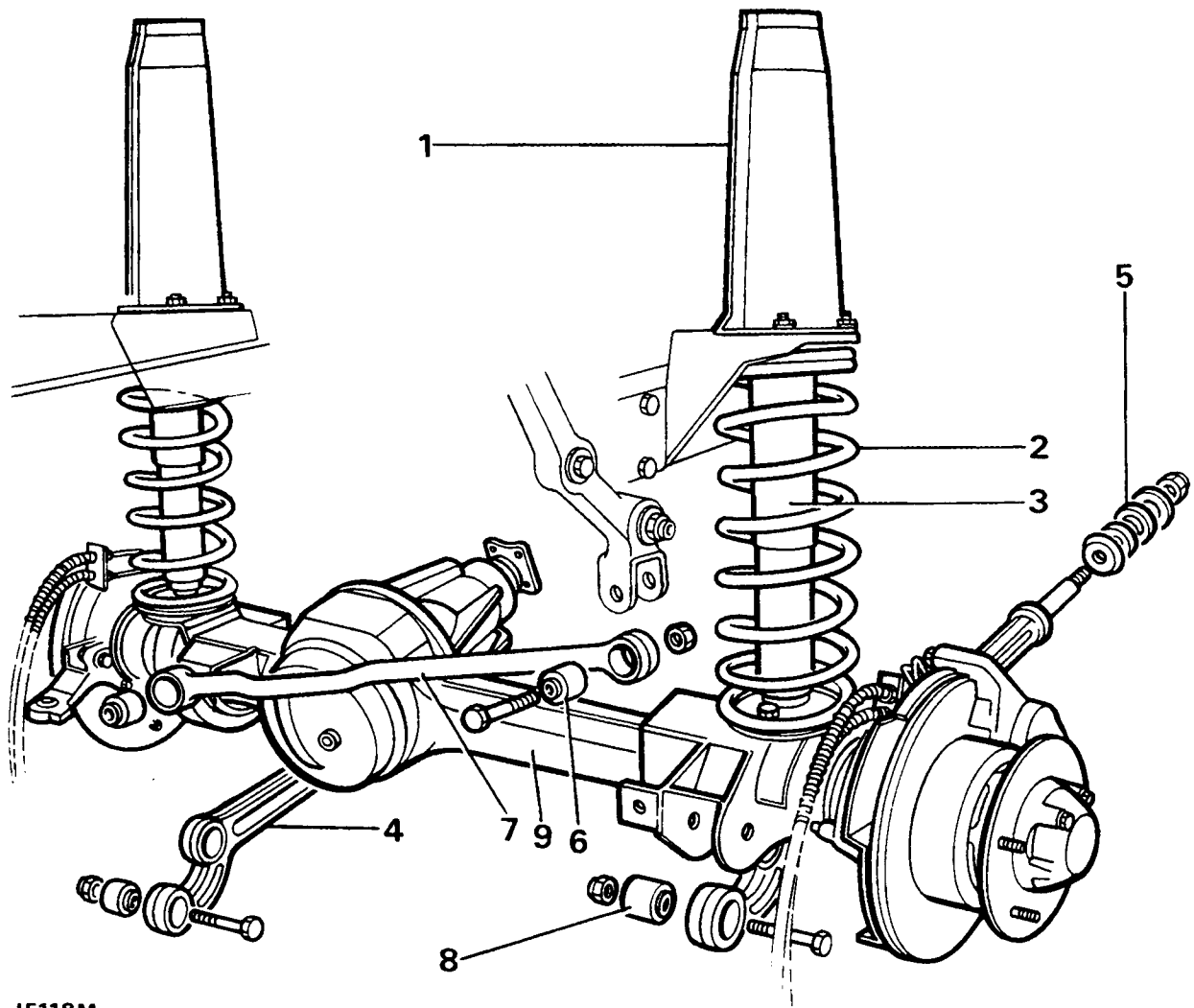


FRONT SUSPENSION



J5118M

1. Top mounting bracket for shock absorber
2. Road spring
3. Shock absorber
4. Radius arm
5. Radius arm rear mounting bushes

6. Panhard rod mounting bush
7. Panhard rod
8. Radius arm front mounting bushes
9. Front axle

SELF LOCKING NUTS

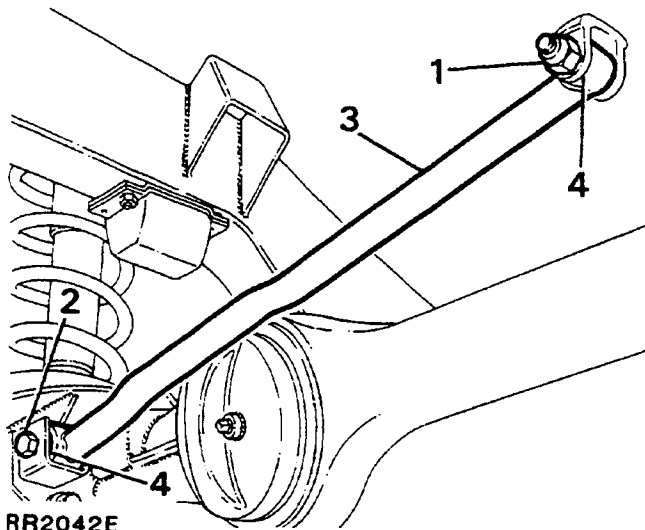
Many steering and suspension items are secured using self locking nuts. Where self locking nuts have been removed, they **MUST** be replaced with new items of the correct type.

PANHARD ROD

Remove and refit

Removing

1. Working underneath the vehicle remove the fixings at the mounting arm.
2. Remove the fixings at the axle bracket.
3. Withdraw the Panhard rod.
4. Using a suitable hydraulic or bench press and a piece of metal tubing slightly smaller than the outside diameter of the bush, press out the rubber mounted bushes. Ensure the steel tubing locates on the outer edge of the bush and not on the rubber inner.



Refitting

5. Fit replacement bushes centrally in the rod.

CAUTION: When pressing in the new bushes ensure that pressure is applied to the outer edge of the bush only and not to the rubber inner.

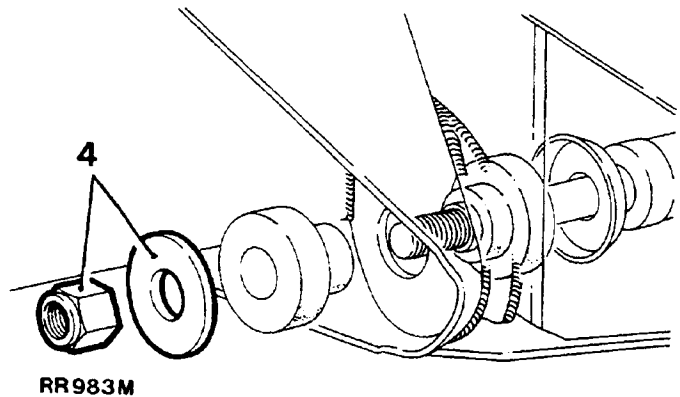
6. Reverse 1 to 4. Tighten the fixings to the correct torque (see section 06-Torque values).

RADIUS ARM

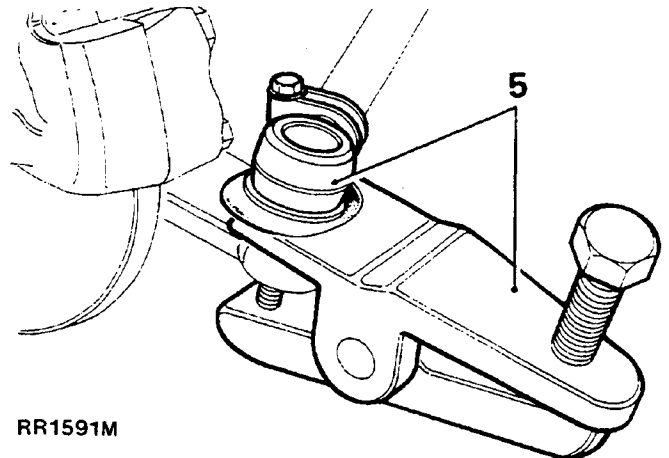
Remove and refit

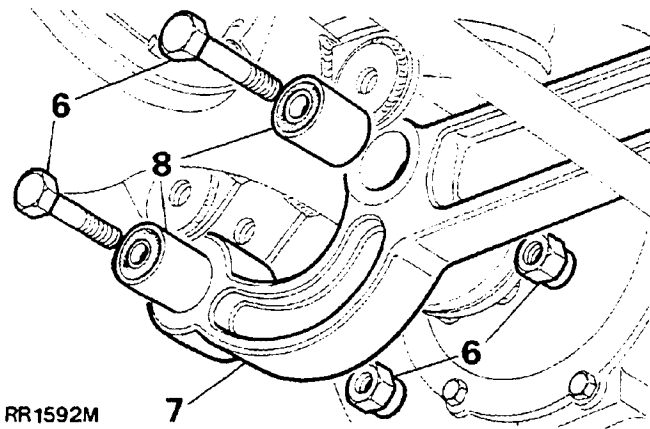
Removing

1. Loosen the road wheel retaining nuts.
2. Raise the front of the vehicle using a suitable hydraulic floor jack. Support chassis on suitable stands and remove the wheel, (remove both front wheels only if removing both radius arms).
3. Support the front axle weight using the hydraulic floor jack.
4. Remove the fixings - radius arm to chassis side member.



5. Disconnect the track rod at the ball joint, using a suitable extractor.
6. Remove the fixings, radius arm to axle.
7. Lower the radius arm front end to clear the axle and remove it from the vehicle.





RR1592M

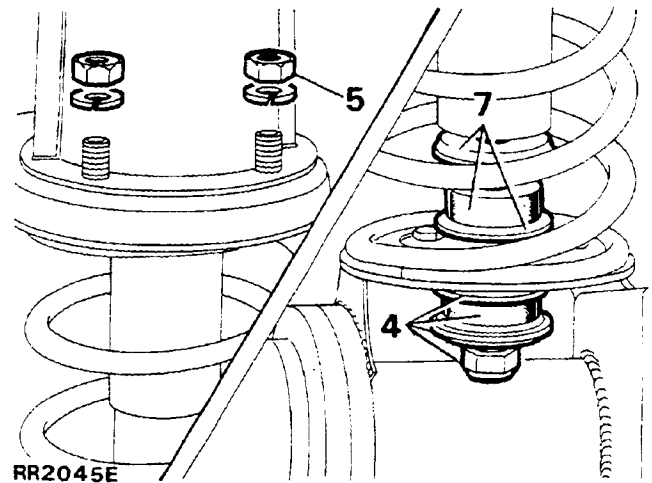
- Using a suitable hydraulic or bench press and a piece of metal tubing slightly smaller than the outside diameter of the bush, press out the rubber mounted bushes. Ensure the steel tubing locates on the outer edge of the bush and not on the rubber inner.

Refitting

- Fit the replacement bushes centrally in the arm.

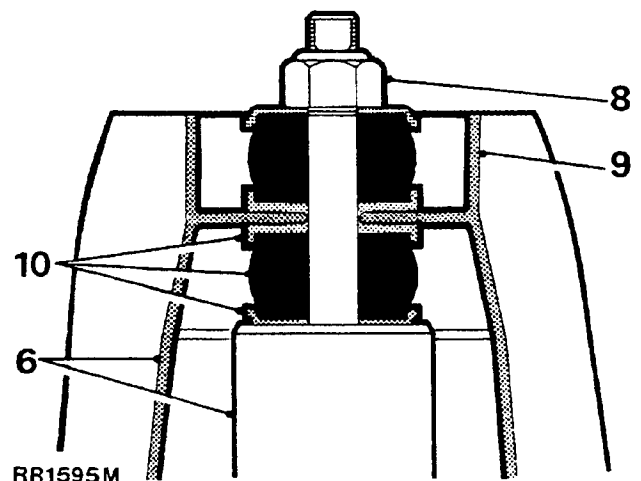
CAUTION: When pressing in the new bushes ensure that pressure is applied to the outer edge of the bush only and not to the rubber inner.

- Reverse 1 to 7. Tighten the fixings to the correct torque (see section 06-Torque values).



RR2045E

- Remove the shock absorber lower fixing and withdraw the cupwasher, rubber bush and seating washer.
- Remove the four shock absorber bracket fixings.
- Withdraw the shock absorber and bracket complete.



RR1595M

- Withdraw the lower seating washer, rubber bush and cupwasher.
- Remove the fixings, shock absorber to mounting bracket.
- Withdraw the mounting bracket.
- Lift off the top seating washer, rubber bush and cupwasher.

Refitting

- Reverse instructions 1 to 10.

FRONT SHOCK ABSORBER

Remove and refit

Removing

- Loosen the road wheel retaining nuts.
- Raise the front of the vehicle using a suitable hydraulic floor jack. Support the chassis on suitable stands and remove the road wheel. (Remove both front wheels only if removing both shock absorbers).
- Support the front axle weight using the hydraulic floor jack.

FRONT ROAD SPRING

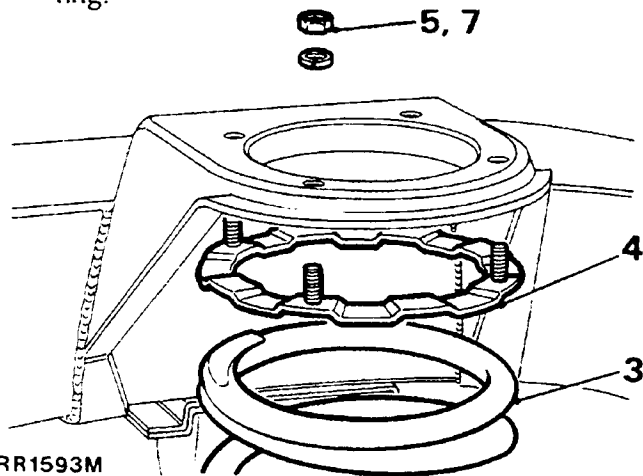
Remove and refit

Removing

1. Remove the front shock absorber.

CAUTION: During the following procedure avoid over stretching the brake hoses. If necessary, loosen the hose connector locknuts to allow the hoses to follow the axle.

2. Lower the axle sufficient to free the road spring.
3. Withdraw the road spring.
4. Withdraw the shock absorber bracket securing ring.



Refitting

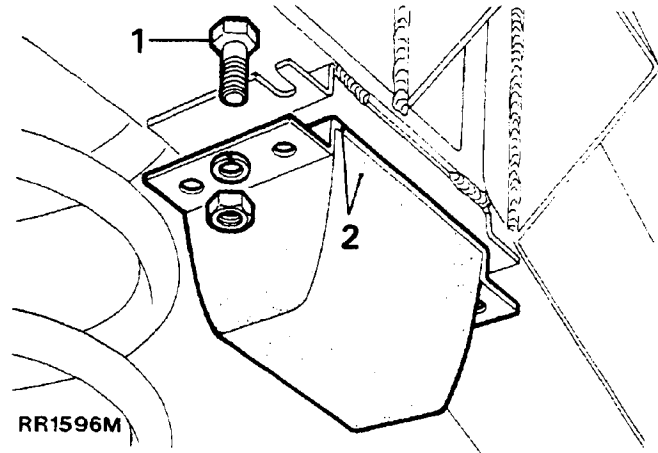
5. Fit the shock absorber bracket retaining ring. Retain in position with a nut.
6. Reverse 2 and 3.
7. Remove the nut retaining the securing ring.
8. Fit the front shock absorber.

BUMP STOP

Remove and refit

Removing

1. Remove the fixings.
2. Withdraw the bump stop assembly.



Refitting

3. Position the fixing bolts in the slots in the chassis brackets.
4. Fit the bump stop assembly.