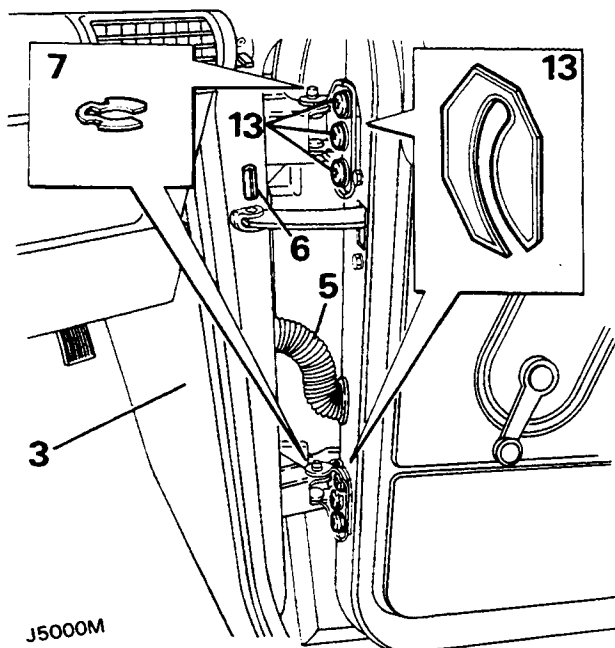


BODY AND FITTINGS**FRONT DOOR****Removal**

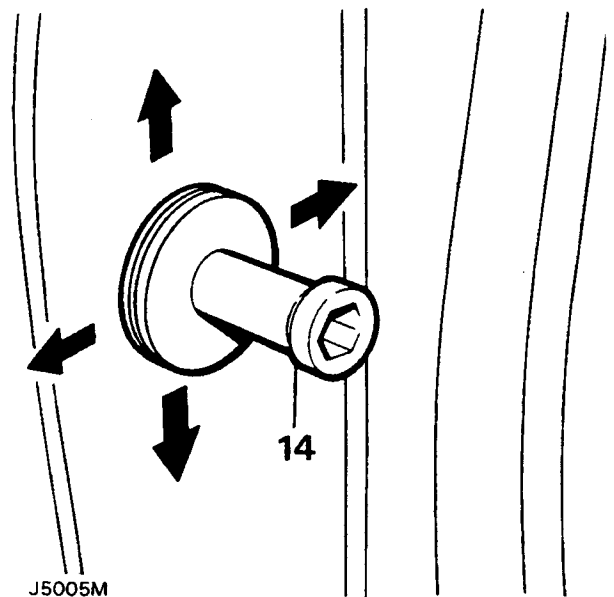
1. Disconnect the battery negative lead.
2. Detach the door seal at the lower section of the 'A' post.
3. Carefully remove the two retaining buttons from the trim panel on the side of the footwell and ease out the panel.
4. Disconnect the three multi-plugs connecting the door harness and speaker leads.
5. Detach the convoluted grommet from the 'A' post and withdraw the door harness and speaker leads.
6. Set the door in the open position without engaging the check stay; then remove the roll pin securing the check stay at the 'A' post.
7. Remove the door hinge 'C' clips from the hinge posts and with assistance carefully lift the door from the vehicle.

Refitting

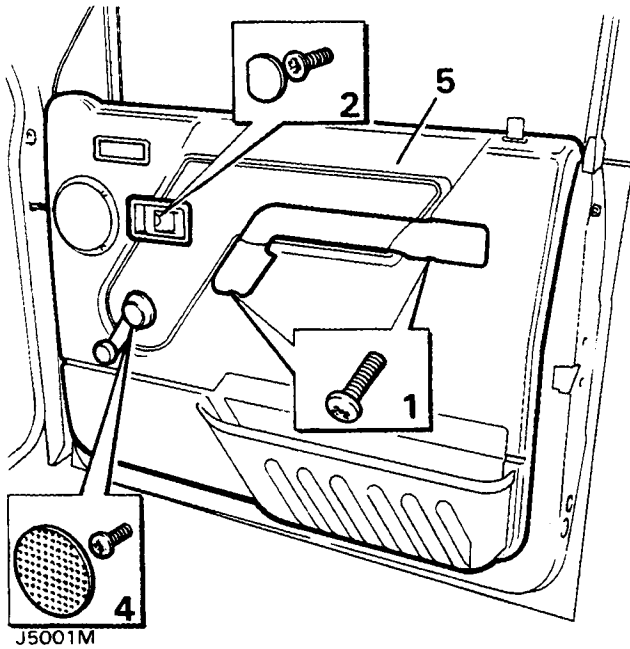
8. Refit the door and secure the hinge posts with the 'C' clips.
9. Locate the check stay to the bracket on the 'A' post and secure with a new roll pin.
10. Feed the door harness and speaker leads through the aperture in the 'A' post, fully open the door and reconnect the multi-plugs in the footwell, take up the slack and refit the convolute grommet to the 'A' post.



11. Refit the footwell side panel.
12. Check the location of the door and the operation of the door lock. If necessary, adjust the door and striker.
13. The door can be adjusted up and down or in and out of the opening by loosening the six screws securing the hinges to the door, and by the addition or removal of shims between the hinge and door.
14. The door lock striker can be adjusted by loosening the striker and moving it in the appropriate direction or by adding and removing spacing washers between the striker and 'B' post.

**DOOR TRIM****Removal**

1. Remove the two securing screws and detach the door pull from its mounting brackets on the inner door panel.
2. Remove the interior door handle finisher button to reveal the screw retaining the handle surround.
3. Remove the screw and detach the handle surround from the trim panel.
4. Where applicable remove the window winder.
5. Detach the trim panel by inserting a trim panel removing tool between the trim panel and the inner door panel, gently prise out the fourteen plastic securing clips from their respective holes in the inner door panel.
6. Disconnect the two speaker connections from inside the door and remove the trim panel complete with speaker, ashtray and door bin.



7. If a new trim panel is to be fitted, remove the speaker, ashtray, door bin and remote button finisher from the existing trim panel and fit them to the new panel.

Refitting

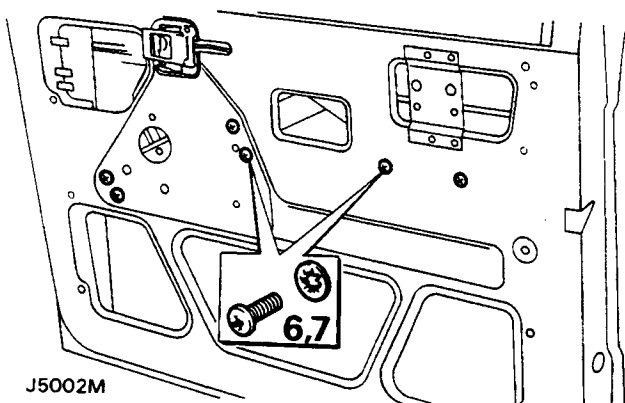
8. Refit the trim panel in reverse order of removal.

FRONT DOOR GLASS AND REGULATOR

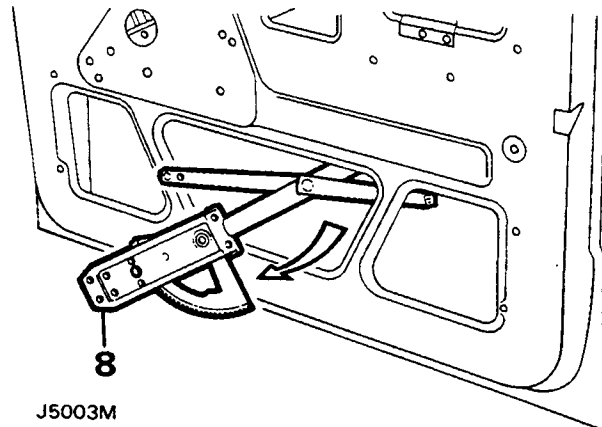
Remove and refit

Removal

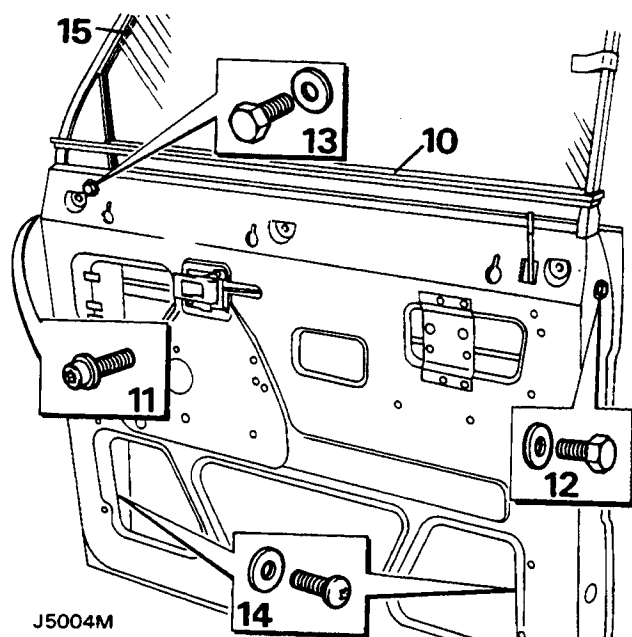
1. Ensure the window is in the fully closed position and secure with adhesive tape to prevent the window from dropping down.
2. Disconnect the battery negative lead.
3. Remove the door trim panel.
4. Remove the plastic vapour barrier.
5. Where applicable remove the window lift motor (refer to the electrical section).



6. Remove the four window regulator retaining screws and shakeproof washers from the inner door panel.
7. Remove the two screws and shakeproof washers retaining the lower window lift channel, and slide the channel off the stud.
8. Disengage the lifting arm stud from the upper lifting channel, manoeuvre the window regulator and remove it from the lower centre opening in the inner door panel.



9. Remove the exterior driving mirror.
10. Remove the waist rail seal from the top of the door panel.
11. Remove the Torex' bolt from the hinge face of the door which secures the front of the door frame.
12. Remove the bolt and plain washer from the opening edge of the door which secures the rear of the door frame.
13. Remove the bolt and plain washer from the recessed hole in the front of the inner door panel under the exterior driving mirror mounting plate.



14. Remove the screws and plain washers, from inside the door, securing the bottom of the front and rear glass channels.
15. Lift the door glass frame complete with glass out of the door panel and remove to a suitable bench.
16. Remove the adhesive tape securing the glass to the door frame.
17. Slide the glass out of the door frame channel.

Refitting

NOTE: When refitting the door glass frame, ensure it is repositioned to suit the door opening before fully tightening the door frame securing bolts.

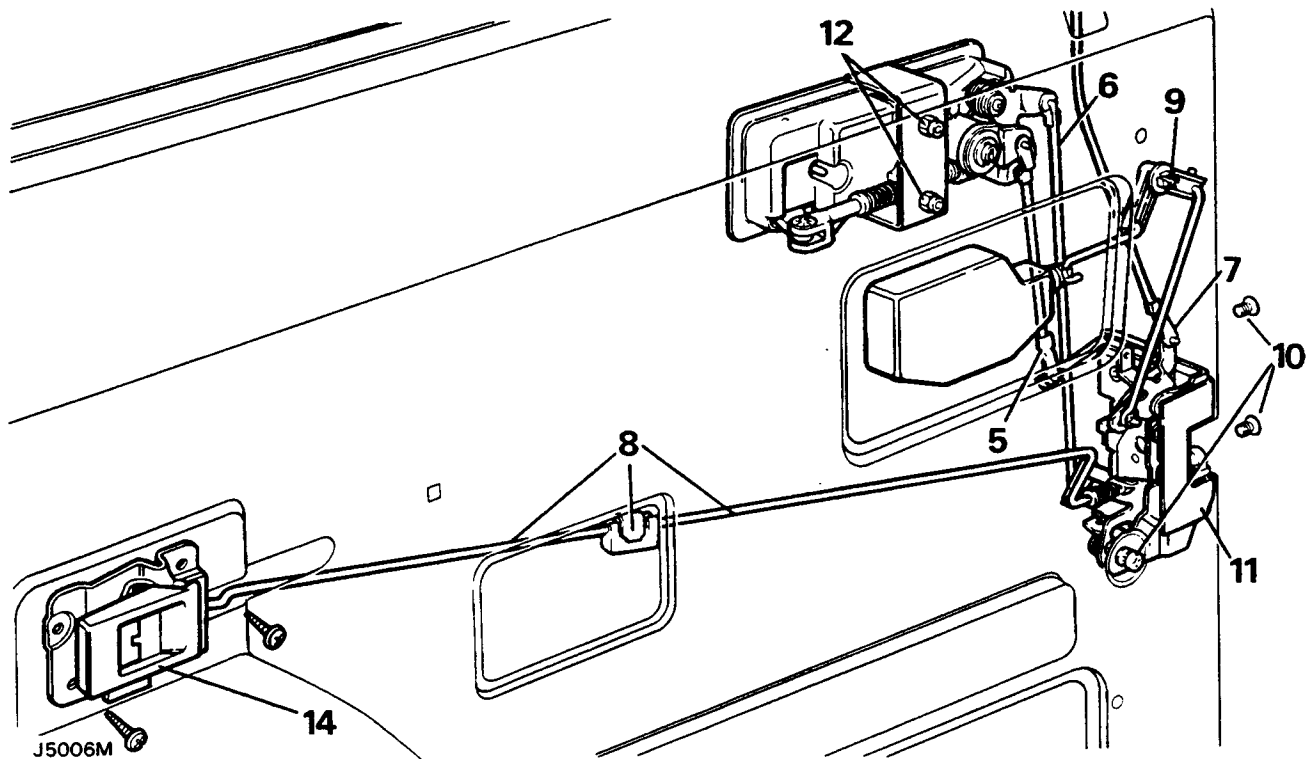
18. To refit the front door glass and regulator reverse the removal instructions.

FRONT DOOR LOCK, OUTSIDE AND INSIDE DOOR RELEASE HANDLES

Removal

1. Disconnect the battery negative lead.
2. Remove the door trim panel.
3. Remove the door glass and regulator.
4. Where applicable remove the door actuator unit (refer to electrical section).
5. Disconnect the lock barrel control rod from the lock by releasing the metal clip at the bottom of the rod.

6. Disconnect the control rod from the outside door release handle by pulling it out of the plastic ferrule.
7. Disconnect the remote button control rod from the lock by releasing the metal clip at the bottom of the rod and withdraw the rod from the door.
8. Disconnect the control rod connector between the inside door release handle and the door lock by releasing the metal clip and pulling one of the control rods out of the plastic connecting block. This is accessible through the small centre cut-out in the door panel. The control rod also passes through a guide bracket in the inside of the inner door panel.
9. From inside the door panel push out the small pin that secures the quadrant to the inner door panel. Push the quadrant out of the panel.
10. Release the door lock by removing the two counter-sunk screws from the door edge and the single screw and shakeproof washer on the inner door panel.
11. Withdraw the lock through the lower rear cut-out on the inner door panel.
12. Remove the two nuts, shakeproof washers and retaining bracket securing the outer door release handle to the outer door panel, accessible through the upper rear cut-out on the inner door panel.
13. Carefully detach the door release handle from the outer panel.
14. Remove the two screws securing the inside door release handle to the inner panel.



15. Withdraw the handle from its location with the connecting rod half still attached.
16. Unclip the end of the connecting rod from the handle.

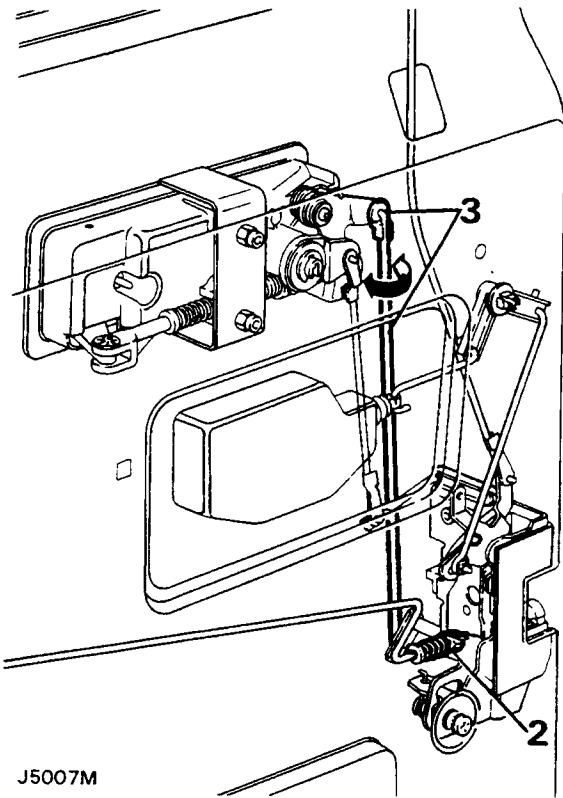
Refitting

17. To refit the front door lock, outside and inside door release handles, reverse the removal procedure.

ADJUSTMENT-FRONT DOOR LOCK AND HANDLE ASSEMBLY

Inside door release handle to lock

1. Refit the inside door release handle surround before any adjustment is made, allowing the handle to be set from the correct operating position.

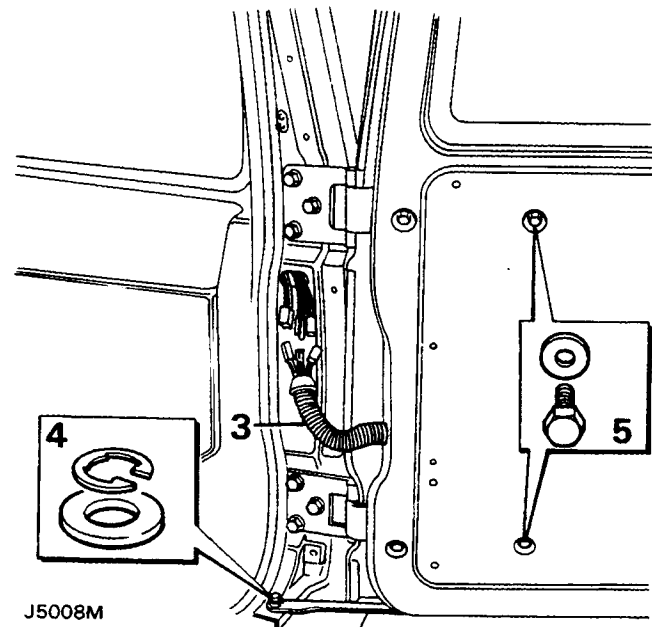


2. At the lock end of the interior handle connecting rod, rotate the spring tensioned nyloc nut clockwise or counter-clockwise, as necessary to shorten or extend the operating length of the rod.

Outside door release handle to lock

3. Disconnect the connecting rod from the plastic ferrule at the rear of the outer door release handle. Rotate the rod clockwise or counter-clockwise to shorten or extend the operating length as necessary.

NOTE: Door release should be effective before the total handle movement is exhausted to provide a small overthrow movement.



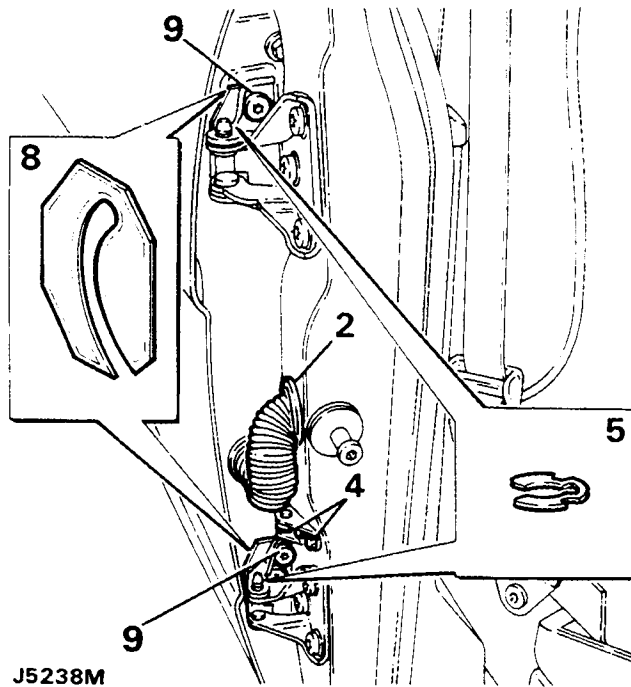
REAR SIDE DOORS

Removal

1. Disconnect the battery negative lead.
2. Detach the convoluted grommet from the B' post.
3. Withdraw the door harness multi-plugs from the B' post and disconnect them.
4. Remove the bolts and washers securing the check strap to the B' post.
5. Remove the door hinge C' clips from the hinge posts and with assistance carefully lift the door from the vehicle.

Refitting

6. Refit the door in reverse order to removal, fitting new C' clips if the existing ones are worn or distorted.
7. Check the operation of the door and lock. If necessary, adjust the door and striker.



Adjusting

8. Adjust the door by adding or removing shims between the hinge and the door to move the door forward or rearward in the opening.
9. To adjust the door up, down or in and out of the opening, slacken the screws securing the hinges to the door, adjust as necessary and retighten the screws to the correct torque value.
10. Adjustment of the door striker is identical to the procedure for front doors.

NOTE: If it is necessary to remove the hinges from the B' post they must be refitted in exactly the same position, using an equal thickness of shims to those removed.

REAR SIDE DOOR - TRIM PANEL

Removal

1. Disconnect the battery negative lead.
2. Remove the two securing screws and detach the door pull from its mounting brackets.
3. Remove the securing screw and detach the interior door release handle surround.

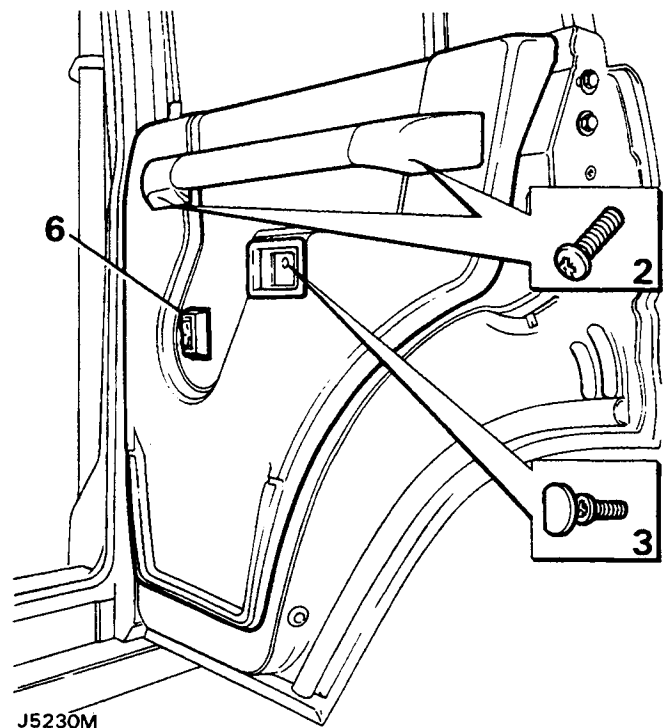
4. Where applicable remove the window winder.
5. Detach the trim panel by inserting a trim panel removing tool between the trim panel and the inner door panel, gently prise out the plastic securing clips from their respective holes in the inner panel.
6. Lift the trim panel over the remote button and clear of the door. Where applicable disconnect the electrical plug from the window lift switch and withdraw the panel.

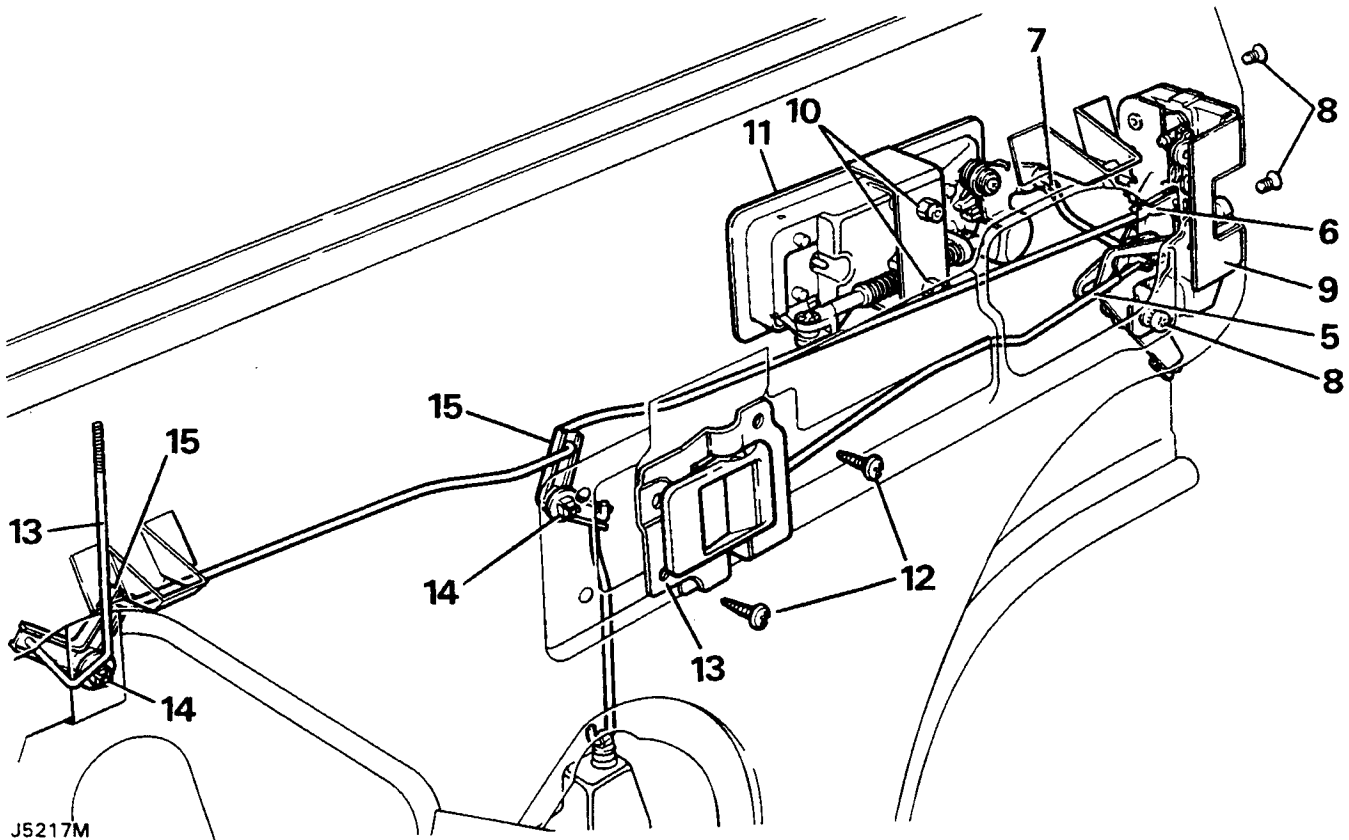
NOTE: With the trim panel removed the remote button and rod will fall from its location in the bellcrank. Observe its correct location and withdraw from the door panel.

7. If a new trim panel is to be fitted, remove the window lift switch, door bin and remote button finisher from the existing trim panel and fit them to the new panel.

Refitting

8. Refit the trim panel in reverse order to removal. Ensuring correct fitment of the sill button operating rod.





J5217M

REAR SIDE DOOR LOCK, INSIDE AND OUTSIDE RELEASE HANDLES

Removal

1. Ensure that the window is in the fully closed position.
2. Disconnect the battery negative lead.
3. Remove the interior trim panel from the door.
4. Remove the plastic vapour barrier sheet.
5. Disconnect the inside release handle control rod by pulling it from its location in the door lock.
6. Disconnect the sill locking control rod from the lock by releasing the metal clip.
7. Disconnect the outside release handle control rod by pulling it out of the plastic ferrule.
8. Remove the two countersunk screws from the door edge and the single screw and shakeproof washer from the inner door panel. Retrieve any spacing washers which may be fitted between the inner door panel and lock.
9. Withdraw the lock through the upper rear opening in the inner door panel.

NOTE: If necessary the following items can be removed.

10. Remove the two nuts, shakeproof washers and retaining bracket securing the outer release handle which are accessible through the upper rear cut-out on the inner door panel.
11. Carefully detach the handle from the outer door panel.
12. Remove the two screws and plain washers securing the inside release handle to the inner door panel and withdraw the handle complete with connecting rod.
13. Disconnect the sill button connecting rod from the bellcrank and withdraw the rod complete with sill button.

Sill locking bellcrank

14. Using a small screwdriver, or length of 3,175 mm (0.125 in) diameter rod, press the plastic locking pins through the respective square inserts in the inner door panel.

15. Release the bellcranks from the inner door panel and unhook the respective connecting rods.
16. Withdraw the bellcranks from inside the door panels.

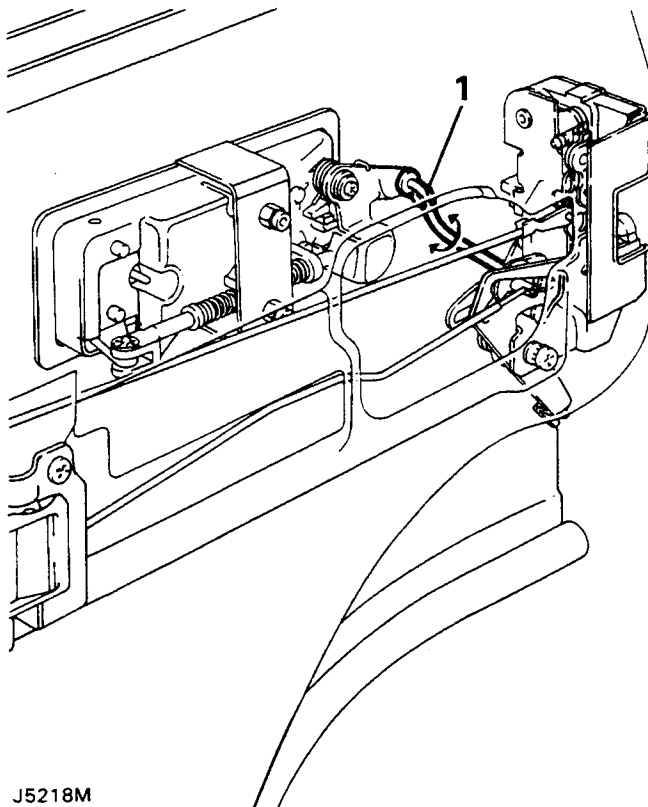
NOTE: When refitting the bellcranks the locking pins are entered into the square insert from outside and pressed in flush.

ADJUSTMENT-REAR SIDE DOOR LOCK AND HANDLE

Outside door release handle to lock

1. Disconnect the short off-set connecting rod at the rear of the outer release handle, rotate the rod clockwise or counter clockwise to shorten or extend the operating length of the rod as required.

NOTE: Door release should occur before the total handle movement is achieved to provide a small overthrow movement.

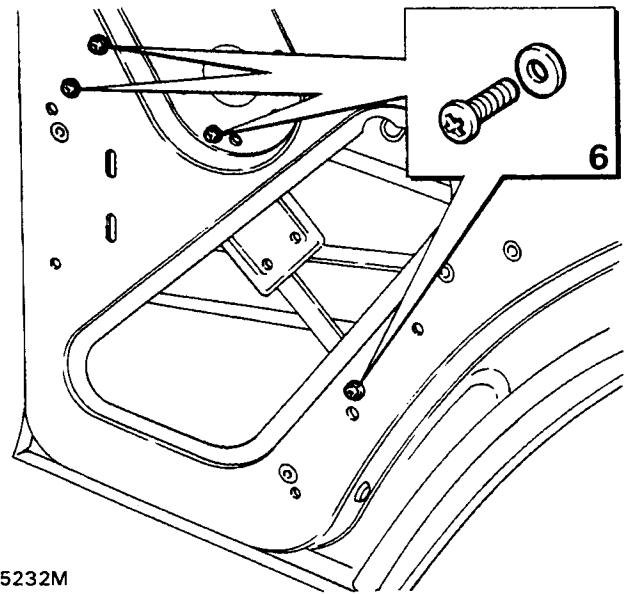


J5218M

REAR SIDE DOOR GLASS AND REGULATOR

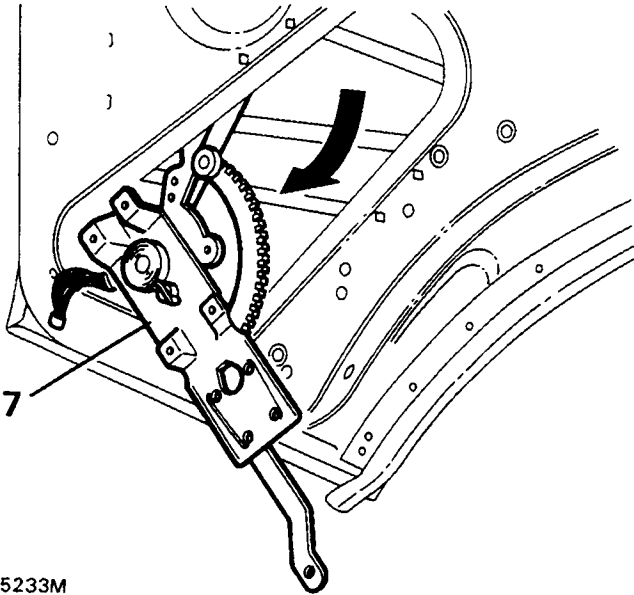
Removal

1. Ensure that the window is in the fully closed position and secure it with adhesive tape over the top of the door to prevent the glass from dropping down.
2. Disconnect the battery negative lead.
3. Remove the door trim panel.
4. Remove the plastic vapour barrier.
5. Where applicable remove the door actuator and window lift motor (refer to the electrical section).
6. Remove the four window regulator securing screws and shakeproof washers from the inner door panel.



J5232M

7. Carefully disengage the lifting arm stud from the glass lifting channel and remove the window regulator from the lower opening in the inner door panel.
8. Remove the waist rail seal from the top of the door panel.
9. Remove the single bolt, spring and plain washers from inside the door, securing the bottom of the short glass run channel.
10. Remove the two bolts, spring and plain washers from the hinge face of the door.



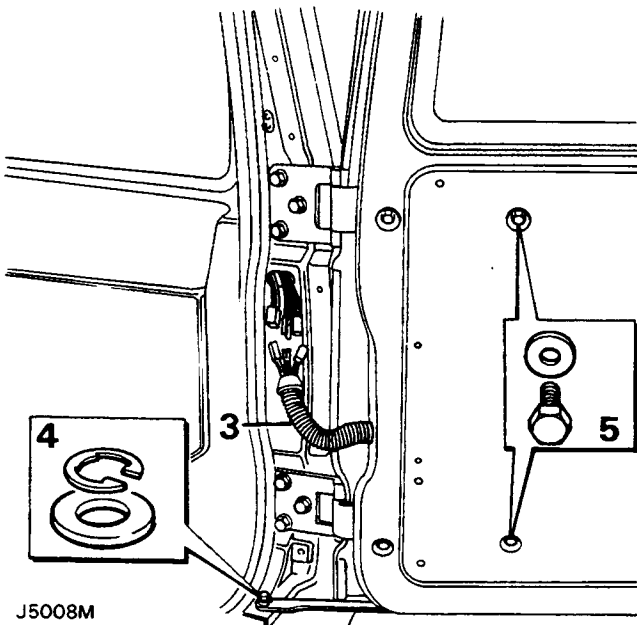
J5233M

11. Remove the two bolts, spring and plain washers securing the door frame to the edge of the door.
12. Lift out the door frame complete with glass and remove to a suitable workbench.
13. Remove the tape and slide the glass out of the door frame channel.

Refitting

14. To refit the rear side door glass and regulator reverse the removal instructions.

NOTE: When refitting the door glass frame ensure that it is adjusted to suit the door opening before fully tightening the securing bolts.



J5008M

REAR DOOR

Removal

1. Remove the spare wheel from the exterior of the door.
2. Remove the door pull and trim panel from inside the rear door.
3. Release the convoluted grommet from the door post, expose the door harness connectors and multi-plugs and disconnect.
4. Remove the circlip and washer from the check stay pivot on the body.
5. Suitably support the door, remove the four bolts securing the hinges to the door and with assistance slide the door off the hinges.

Refitting

6. Refit the door in reverse order of removal.

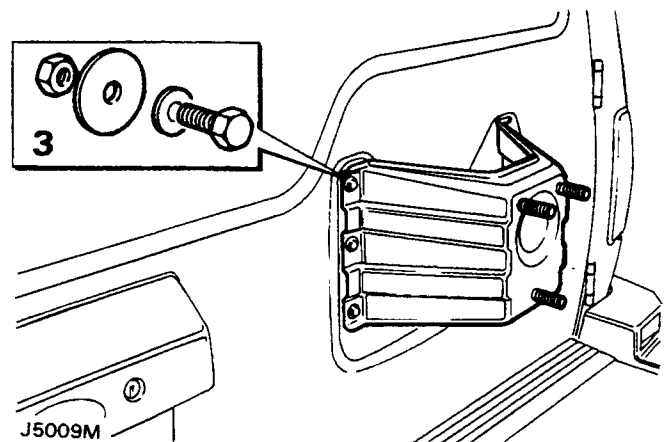
Spare wheel mounting bracket

Removal

1. Remove the spare wheel from the mounting bracket on the rear door.
2. Remove the door pull and trim panel from inside the rear door.
3. Remove the six nuts, bolts and washers and withdraw the spare wheel mounting bracket.

Refitting

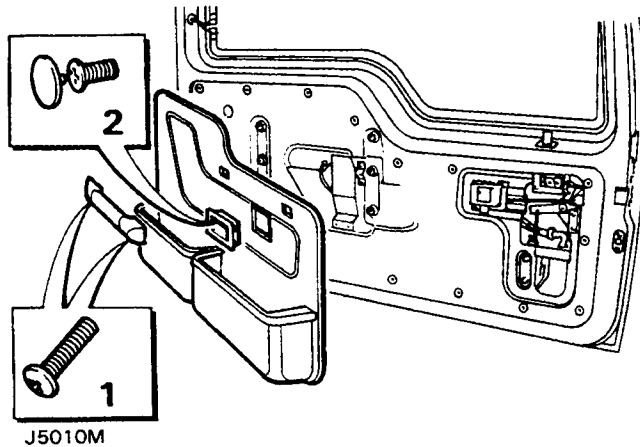
4. Refit the spare wheel mounting bracket in reverse order of removal.



J5009M

Rear door trim panel**Removal**

1. Remove the two screws securing the door pull and remove it from the door.
2. Remove the finisher from the inner door handle.
3. Using a trim panel removing tool release the seventeen trim panel fasteners and withdraw the panel from the door.



4. If necessary remove the sixteen screws securing the stowage bins to the trim panel and detach the bins.

Refitting

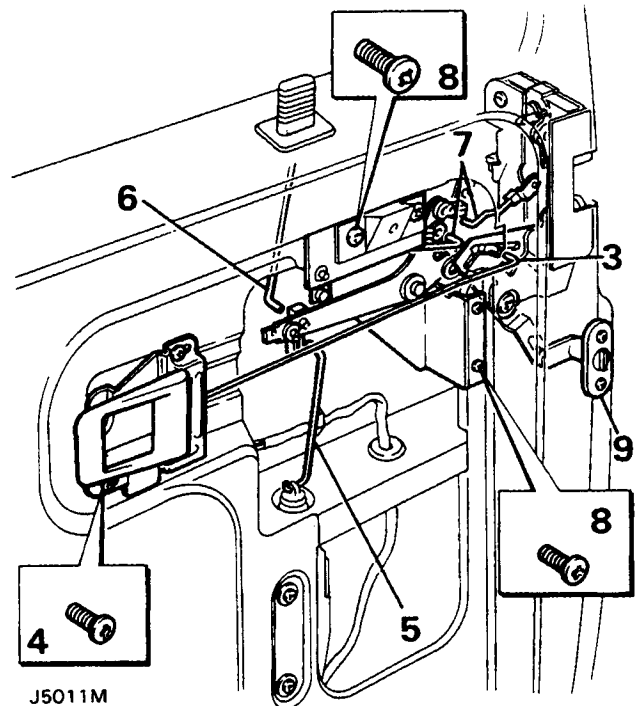
5. Refit the trim panel in reverse order to removal.

Rear door lock and inner and outer release handles**Removal**

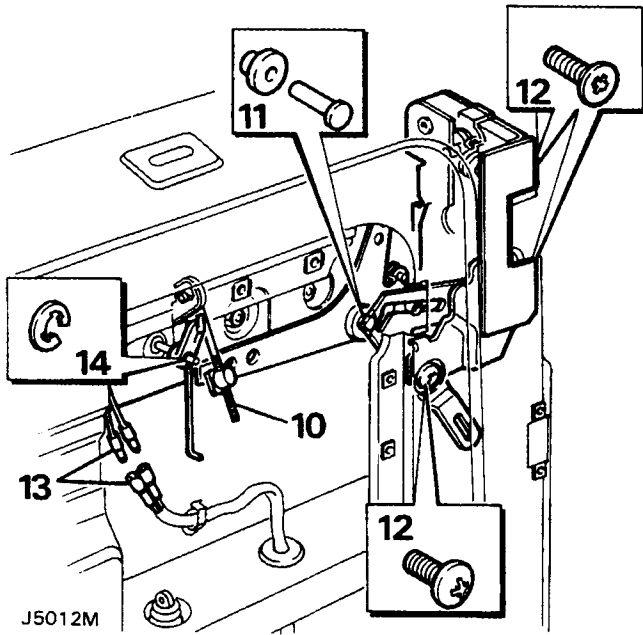
1. Disconnect the battery negative lead.
2. Remove the door pull, the trim panel and the vapour protective sheet, to allow access to the door handles and lock mechanisms.
3. Disconnect the inner release handle connecting rod at the lock.
4. Remove the two screws securing the inner handle and withdraw the handle complete with connecting rod.

NOTE: Two identical 'Y' shaped levers (bellcranks) are fitted to the rear door lock mechanism and are referred to as inner and outer 'Y' levers; the inner one being the nearest to the inner door panel.

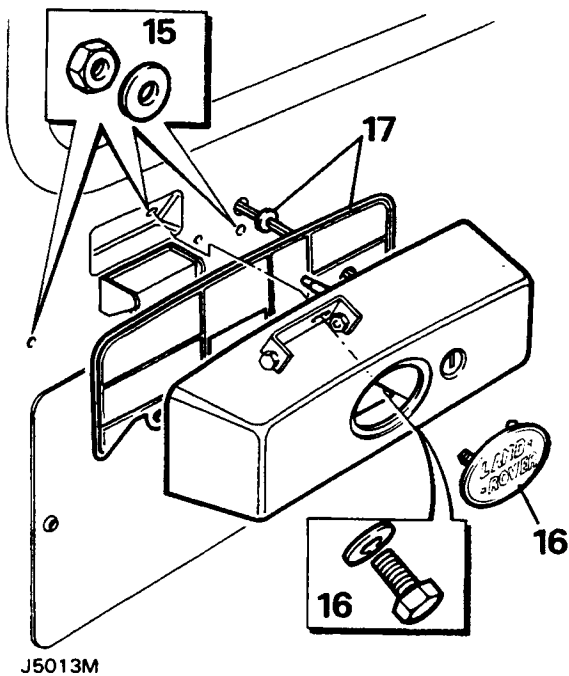
5. If fitted, remove the central locking actuator control rod link from the actuator and from the inner 'Y' lever.



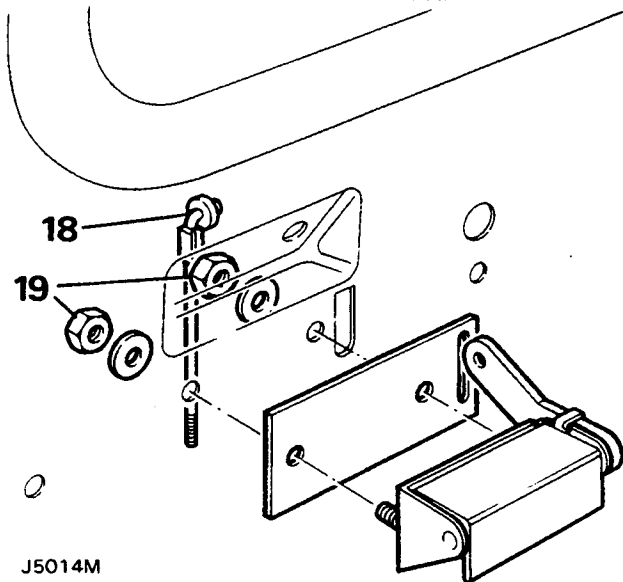
6. Detach the remote button connecting rod at the inner 'Y' lever and withdraw from inside the door.
7. Detach the lock and barrel connecting rods from the upper leg of the inner 'Y' lever.
8. Remove the screws securing the lock control mechanism pivot bracket and the door pull mounting bracket, ease the bracket from the lock barrel stem and remove from the door.
9. Remove the two screws and withdraw the childproof lock actuator.



10. Disconnect the adjustable lock rod from the outer 'Y' lever.
11. Remove the centre pin from the outer 'Y' lever pivot and release the pivot from the door.
12. Remove the three lock securing screws and manoeuvre the lock and 'Y' lever out of the door panels.
13. Disconnect the number plate light leads from the door harness.
14. Remove the 'E' clip securing the fulcrum to the barrel stem and withdraw the fulcrum and lock rod.



15. From inside the door panel remove the nuts and washers securing the lock barrel and number plate light housing.
16. Remove the logo from the housing and working through the logo aperture, remove the single bolt securing the housing.
17. Partially withdraw the housing and its rubber seal from the door, displace the rubber grommet from the door panel, withdraw the number plate light leads and complete the removal of the housing and seal from the door.
18. Remove the connecting rod from the outer door handle lever.
19. Remove the two nuts and washers securing the outer handle from inside the door panels and detach the handle and seal.

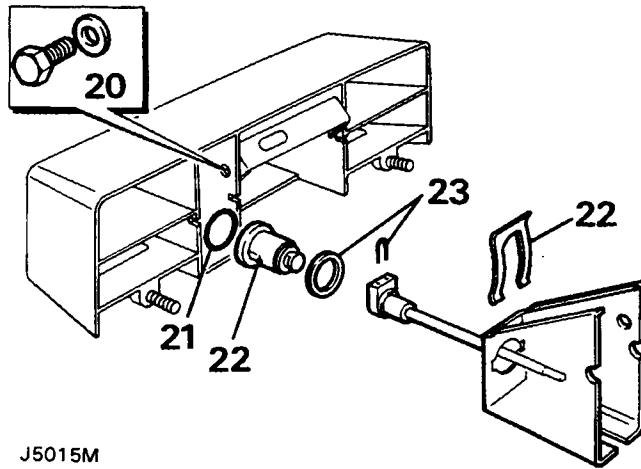


Lock barrel and number plate light housing

Dismantling

NOTE: The lock barrel can only be removed from its housing when the lock barrel and number plate light housing is removed from the door.

20. Remove the bolt securing the lock barrel mounting bracket to the housing and withdraw the assembled barrel and bracket.
21. Remove the 'O' ring seal from inside the housing.



J5015M

22. Remove the spring clip securing the barrel to the bracket and withdraw the barrel and stem assembly from the bracket complete with seal.
23. Remove the 'U' clip securing the stem to the barrel and detach the seal from the inner face of the barrel.
24. If the lock barrel and number plate light housing is being renewed, remove the number plate lights, harness and the housing mounting bracket, from the existing housing and fit them to the new housing.

Reassembly

25. Fit the stem to the barrel and secure with the 'U' clip.
26. Position a new seal on the inner face of the barrel, insert the stem and barrel into the mounting bracket and secure with the spring clip.
27. Place a new 'O' ring seal on the inner face of the barrel aperture in the housing.
28. Insert the assembled bracket and barrel into its location in the housing, taking care not to disturb the seal, and secure with the bolt.

Refitting

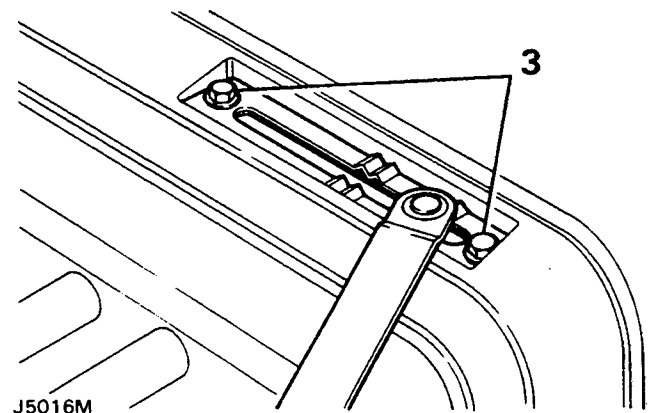
29. Fit the outer handle to the door and secure from the inside with the two nuts and washers.
30. Fit the lock barrel and number plate light housing by inserting the number plate light leads through the aperture in the door panel and locating the rubber grommet in the aperture. Insert the barrel stem through the door, locate the housing on the door panel, ensure that the seal seats correctly, and secure with the single bolt and washer through the logo aperture.
31. Connect the number plate light leads to the door harness.
32. Fit the logo to the aperture in the housing.

33. Fit the fulcrum and connecting rod to the barrel stem and secure with the 'E' clip.
34. Fit the lock and assembled outer 'Y' lever, secure the lock with the three screws, locate the 'Y' lever pivot and secure with the pin.
35. Fit the connecting rod from the outer handle lever to the outer 'Y' lever.
36. Fit the childproof lock actuator and check that it is functioning.
37. Insert the remote button and rod to the location in the door.
38. Offer up the assembled inner 'Y' lever and bracket, attach the barrel connecting rod to the top clip of the upper leg and the rod from the lock to the lower clip of the upper leg.
39. Locate the barrel stem in the insert on the bracket.
40. Secure the bracket with the four screws; fitting the door pull mounting bracket under the heads of the top two screws.
41. Attach the remote button and the actuator connecting rods to the 'Y' lever.
42. Fit the inner release handle and attach the connecting rod to the lock.
43. Refit the vapour protective sheet, door trim panel and door pull.

Rear door check stay

Removal

1. Remove the rear door from the vehicle.
2. Invert the door on a suitable protected area.
3. Remove the two securing bolts and withdraw the check stay assembly.



J5016M

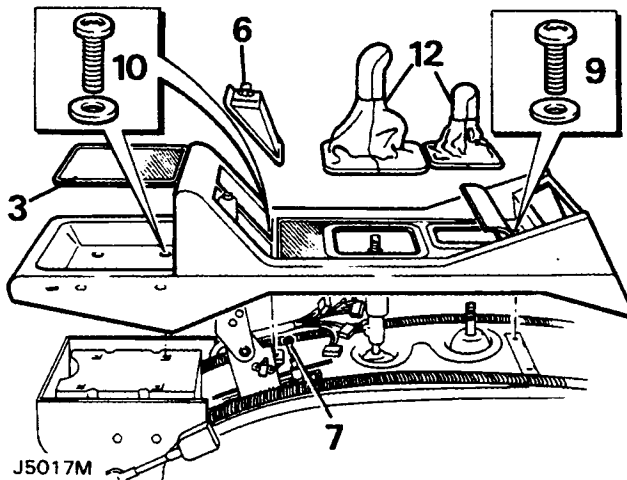
Refitting

4. Refit in reverse order to removal.

CENTRE CONSOLE

Removal

1. Chock the road wheels to prevent the vehicle from moving when the handbrake cable is disconnected.
2. Disconnect the battery negative lead.
3. Remove the mat from the parcel shelf at the rear of the console.
4. Remove the radio cassette player from the console following the radio manufacturers instructions.
5. Detach the handbrake lever gaiter from the console.
6. Release the switch panel adjacent to the hand brake lever, disconnect the multi-plugs and withdraw the panel.



7. Raise the handbrake lever gaiter, remove the spring clip and clevis pin securing the cable and detach the cable.
8. Raise the handbrake lever to the upright position.
9. Raise the front of the console rubber mat and remove the two console securing screws.
10. Remove the four screws from the console parcel tray and the screw in the switch panel aperture.
11. Raise the console, and from the underside release the clips securing the gear and transfer lever gaiters.
12. Remove the gaiters by unscrewing the attached knobs from the levers.
13. Carefully withdraw the console from its location complete with mat.

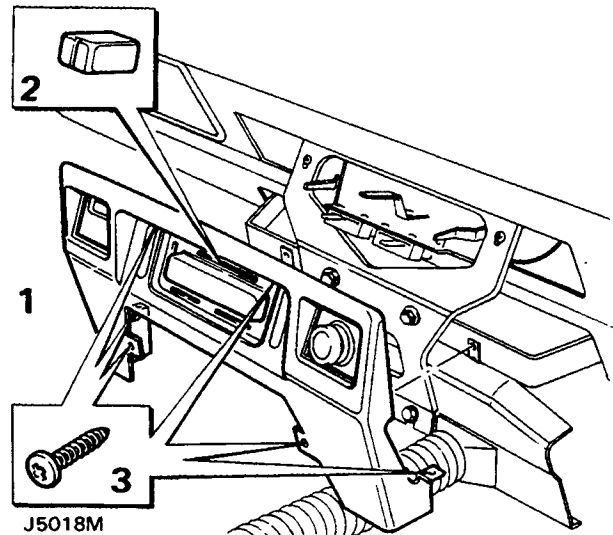
Refitting

14. Refit the centre console in reverse order of removal.

HEATER AND VENTILATION CONTROL PANEL

Removal

1. Remove the centre console.
2. Remove the knobs from the control levers.
3. Remove the four screws from the front of the panel and the two screws, one each side of the panel, securing the panel to the lower fascia.
4. Withdraw the panel and disconnect the clock, cigar lighter and illumination panel multi-plugs.



Refitting

5. Refit the heater control panel in reverse order of removal.

STEERING WHEEL

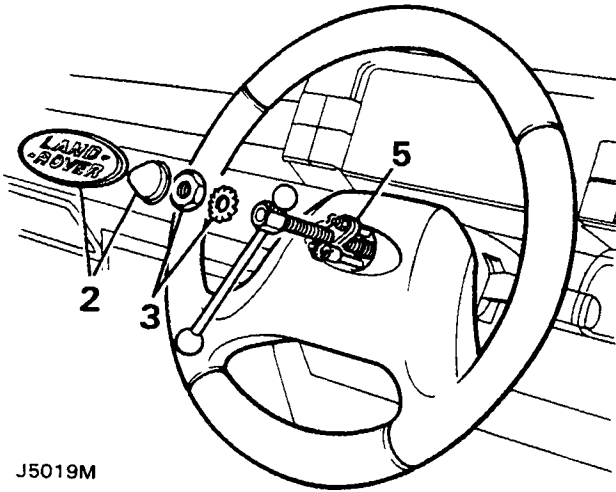
Removal

Service tools

- 18G 1014 Steering wheel remover
- 18G 1014-2 Adaptor pins

NOTE: The steering column is of the safety type and incorporates shear pins. Therefore do not impart shock loads to the steering column during removing and refitting or at any other time.

1. Ensure that the front wheels are in the straight ahead position.
2. Remove the logo badge from the centre of the steering wheel and withdraw the impact protection cover from the nut.



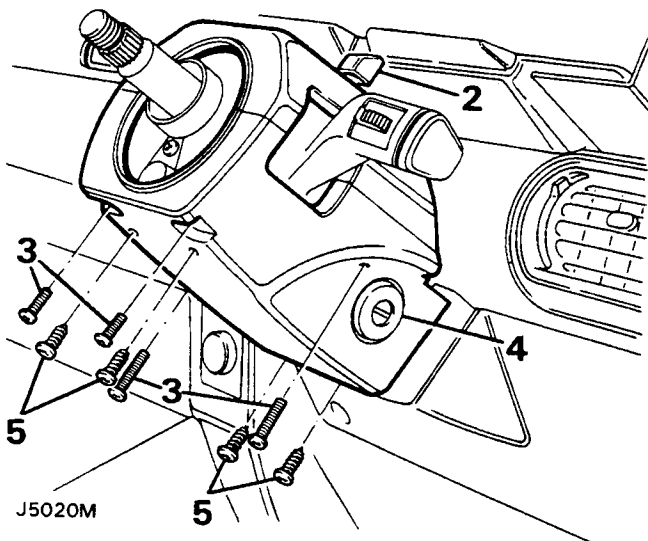
J5019M

3. Remove the nut and serrated washer securing the wheel to the steering column.
4. Scribe alignment marks on the steering column and wheel to ensure correct location when refitting.
5. Using service tool 18G 1014 remove the steering wheel, ensuring that the adaptor pins are inserted in the threads up to the shoulder on the pins.

Refitting

6. Ensure that the front wheels are still in the straight ahead position.
7. Fit the steering wheel to the column, aligning the marks scribed during removal, and secure with the nut and serrated washer. Tighten the nut to the specified torque (Section 06).
8. Fit the impact protection cover over the nut and the logo badge to its location in the centre of the wheel.

STEERING COLUMN SHROUD



J5020M

Removal

1. Remove the steering wheel.
2. Pull off the hazard warning light button.
3. Remove the four screws securing the upper half of the shroud to the lower half and carefully lift the upper half away.
4. Remove the ignition/start key if located in the barrel.
5. Remove the four screws securing the bottom half of the shroud to the steering column brackets and carefully withdraw.

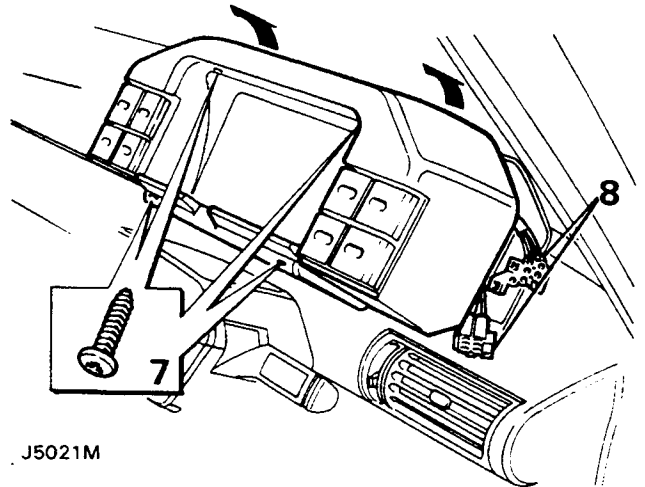
Refitting

6. Refit the shroud in reverse order of removal.

FASCIA

Removal

1. Disconnect the battery negative lead.
2. Remove the radio/cassette player from the centre console following the radio manufacturers instructions.
3. Remove the centre console.
4. Remove the heater control panel.
5. Remove the steering wheel.
6. Remove the steering column shroud.

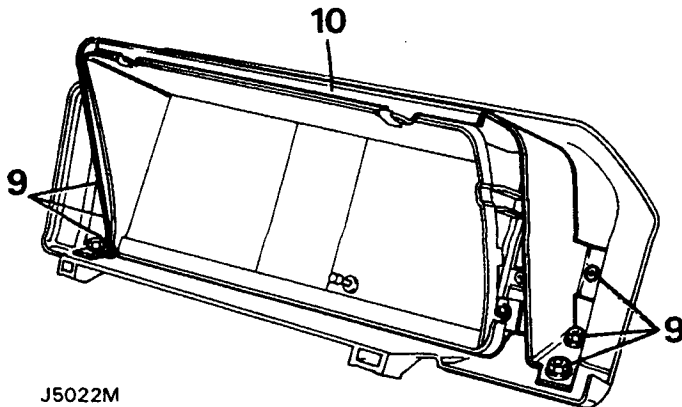


J5021M

7. Remove the four screws securing the instrument fascia switch panel.
8. Release the switch panel and disconnect the eight multi-plugs from the rear of the switches. Note the colour coding locations to assist with refitting.
9. Remove the four nuts and washers and the two screws securing the instrument pack to the rear casing.

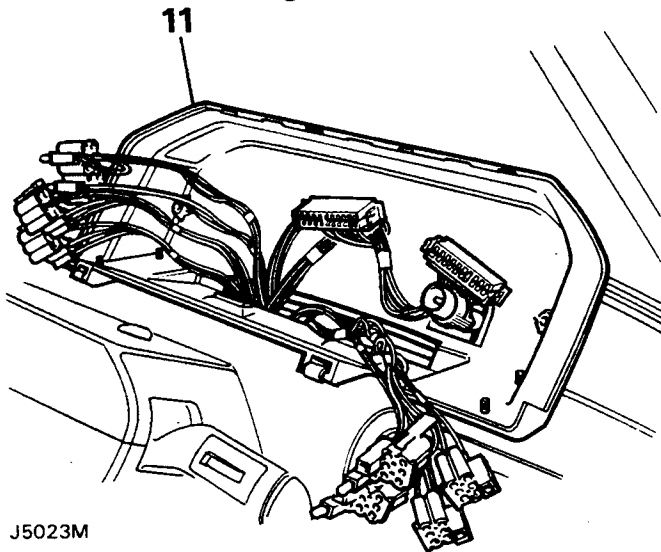
10. Pull the instrument pack forward, from the rear of the pack disconnect the speedometer cable and the two multi-plugs, then lift the instrument pack, complete with mounting bracket, from the rear casing.

NOTE: When the instrument pack is removed from the vehicle it must be stored in the upright position, otherwise fluid loss will occur.



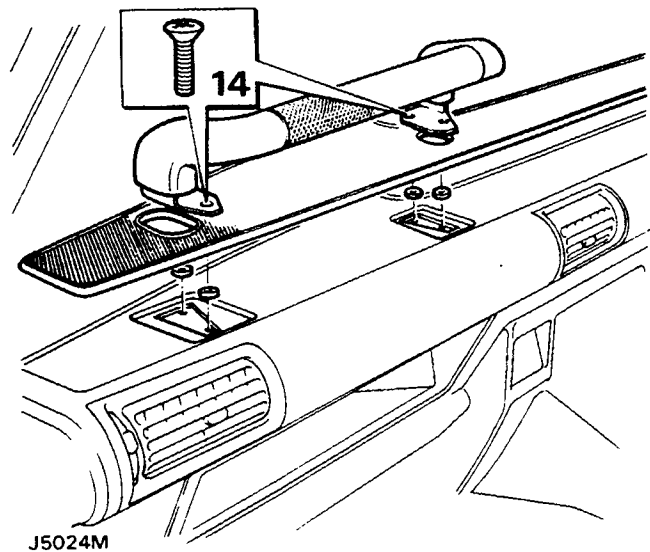
J5022M

11. Raise the instrument pack rear casing from the fascia, feed the harness leads and speedometer cable through the apertures and withdraw the casing.



J5023M

12. Release the two retainers and withdraw the fuse panel cover.
 13. Depress the retainers at the top and bottom of the indicator and wash wipe switches and slide the switches from the switch housing.
 14. Raise the fascia mat, remove the grab handle securing screws, detach the handle and mat and retrieve the spacers from the fascia mounting bracket.
 15. Remove the two bolts securing the fascia bracket in the bottom of the console well.



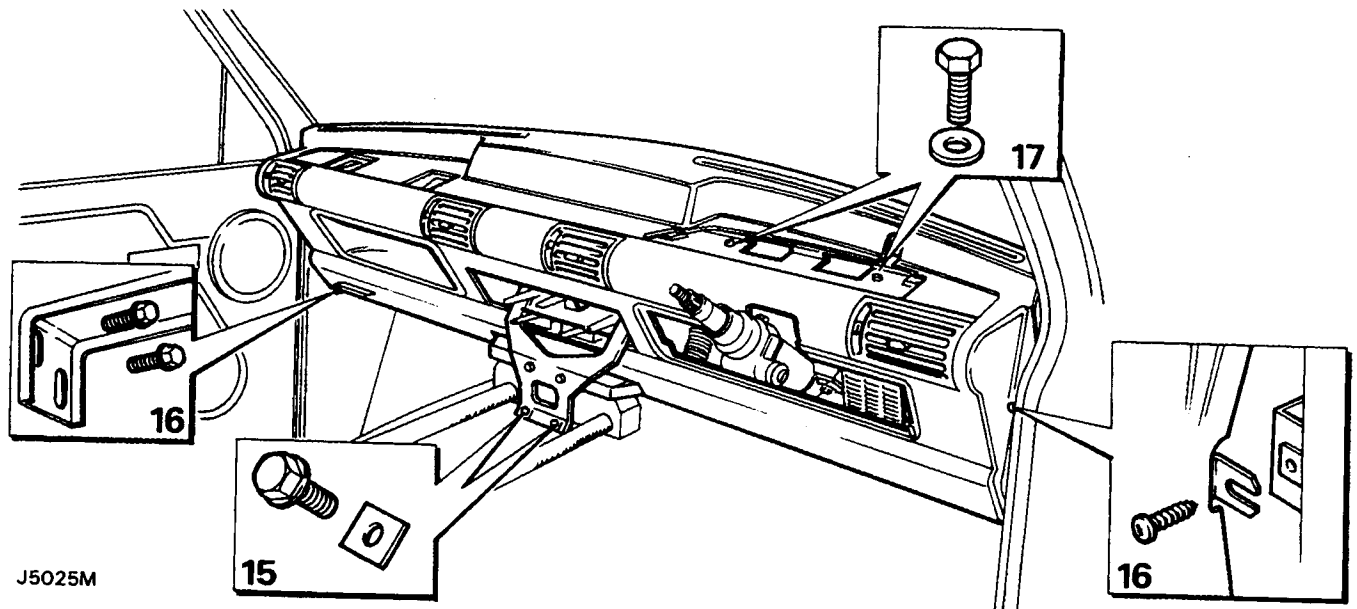
J5024M

16. Remove the footwell side panels followed by the screws and washers securing the sides of the fascia at the 'A' posts and the two bolts at the 'A' post brackets at the bottom of the fascia.
 17. Remove the two bolts and washers from the instrument pack location in the top of the fascia.
 18. Carefully withdraw the fascia and remove from the vehicle.

Refitting

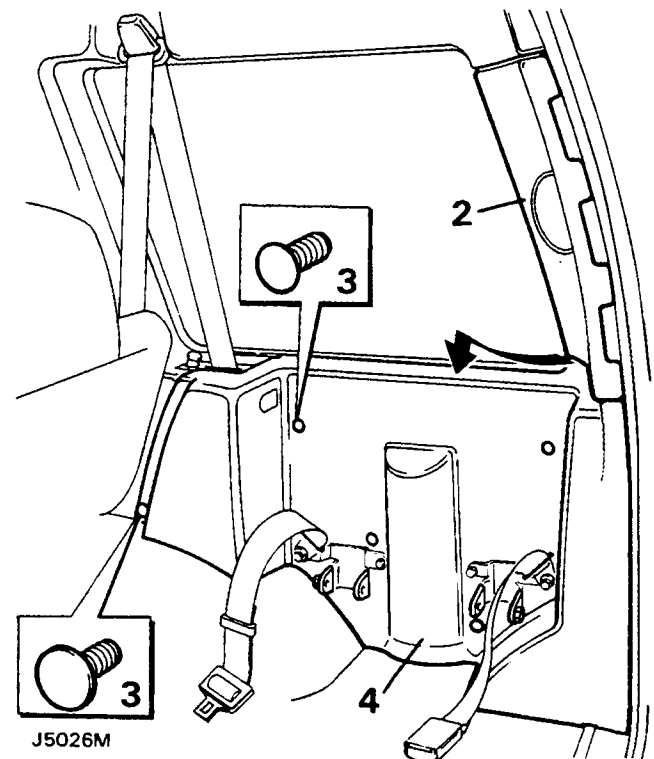
NOTE: If a new fascia panel is being fitted to the vehicle, remove the associated securing brackets, glove pocket, vents, tubes and ventilation plenum chamber from the existing fascia and fit them to the replacement fascia.

19. Fit the fascia assembly over the steering column, passing the harness and column switches through their respective apertures.
 20. Loosely fit the two securing screws, one each side of the fascia, to the upper 'A' post brackets.
 21. Loosely fit the bolts securing the fascia to the lower 'A' post brackets and the bracket in the centre console well.
 22. Fit the two bolts in the instrument housing location.
 23. Securely tighten all the bolts and screws, ensuring that the fascia assembly sits correctly in its location.
 24. Refit the wash wipe and indicator switches to the steering column.
 25. Feed the speedometer cable and harness leads through their respective apertures in the instrument pack rear casing and locate the casing on the studs.



J5025M

26. Connect the two multi-plugs and the speedometer cable to the rear of the instrument pack, locate the pack over the studs and secure with the nuts washers and screws.
27. Connect the eight multi-plugs to the rear of the switches, following the colour coding noted during removal.
28. Position the switch panel over the instrument pack to locate with the rear casing and secure with the four screws.
29. Locate the spacers in the apertures and fit the grab handle and fascia mat.
30. Refit the steering column shroud.
31. Fit the fuse panel cover.
32. Refit the steering wheel.
33. Refit the heater control panel.
34. Refit the centre console.
35. Refit the radio/cassette player to the centre console following the radio manufacturers instructions.
36. Connect the battery negative lead.



J5026M

REAR COMPARTMENT LOWER TRIM PANELS

Removal

1. Remove the fold down seat or pocket side panel, whichever is applicable.
2. Remove the trim panel from the rear quarter.
3. Remove the five trim panel retainers.
4. Ease the trim panel from its location, feed the seat belts through the apertures and withdraw the panel.

Refitting

5. Refit the panel in reverse order of removal.

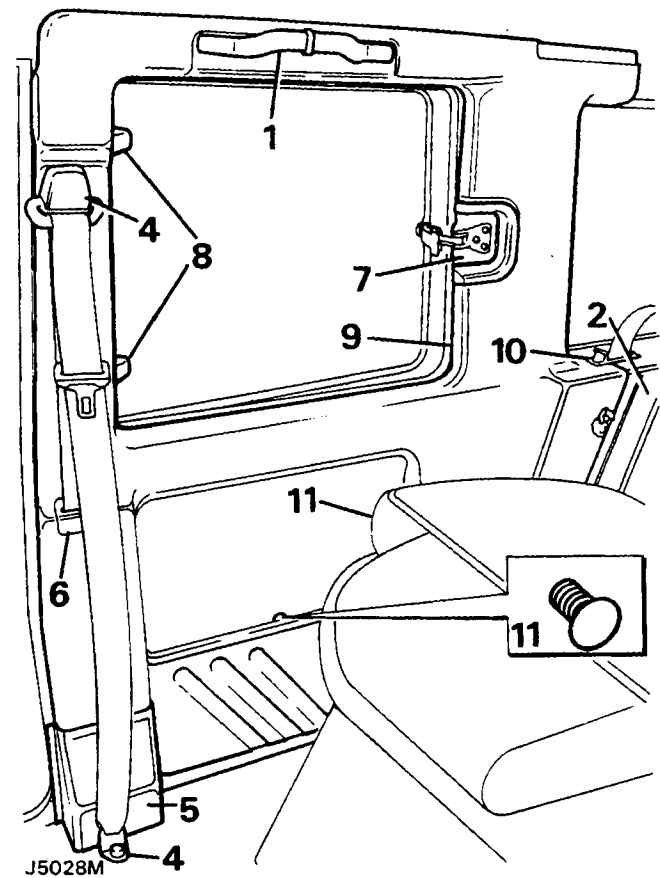
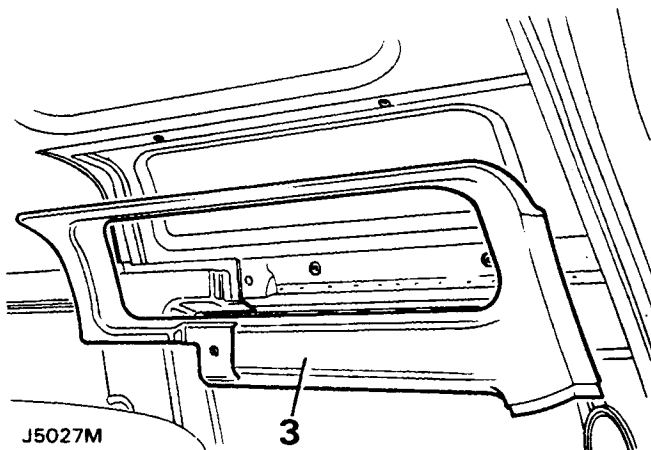
ALPINE LIGHT TRIM CASING

Removal

1. Remove the rear passenger seat belt top fixing.
2. Remove the trim panel from the rear quarter.
3. Ease the alpine light trim casing from the four fasteners and withdraw from the vehicle.

Refitting

4. Refit the casings in reverse order of removal.



FRONT BODYSIDE TRIM CASING

Removal

1. Remove the grab handle.
2. Remove the rear compartment lower trim panel.
3. Remove the alpine light trim casing.
4. Remove the bolts securing the upper and lower seat belt mountings.
5. Remove the finisher from its location over the seat belt inertia reel.
6. Remove the front seat belt guide from the upper aperture in the casing.
7. Open the side window, remove the catch securing screws and withdraw the catch trim.
8. Remove the side window hinge finishers.
9. Release the casing from the window rubber.
10. Release the rear seat belt from the guide attached to the casing.
11. Fold down the rear seats and carefully ease the casing from the fastenings.
12. Pass the front seat belt through the upper aperture and withdraw the casing from the vehicle.

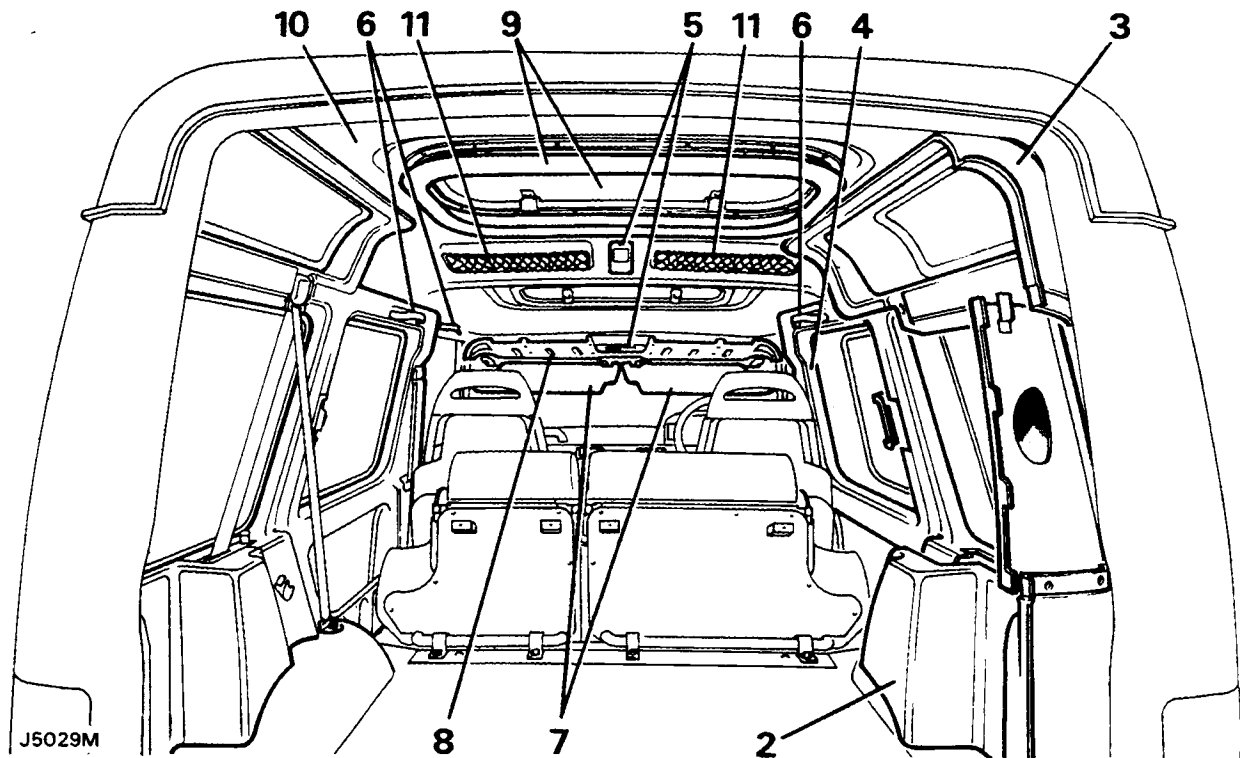
Refitting

13. Refit the casings in reverse order of removal, ensuring that the trim material glued to the door post is not wrinkled when the door seal is fitted.

HEADLINING

Removal

1. Disconnect the battery negative lead.
2. Remove the lower trim casings from the rear compartment.
3. Remove the alpine light trim casings.
4. Remove the front bodyside trim casings.
5. Remove the roof lights from the headlining pocket and from the headlining.
6. Remove the front grab handles.
7. Remove the sun visors and their retaining clips.
8. Remove the front headlining pocket.
9. Remove the glass panels and the finishers from the sun roof apertures.
10. Release the headlining from the channel above the rear door and manoeuvre it from the vehicle through the rear door.



11. If the existing headlining is being replaced, if fitted, remove the passenger net pockets and fit them to the new headlining.

Refitting

12. Refit the headlining in reverse order to removal.

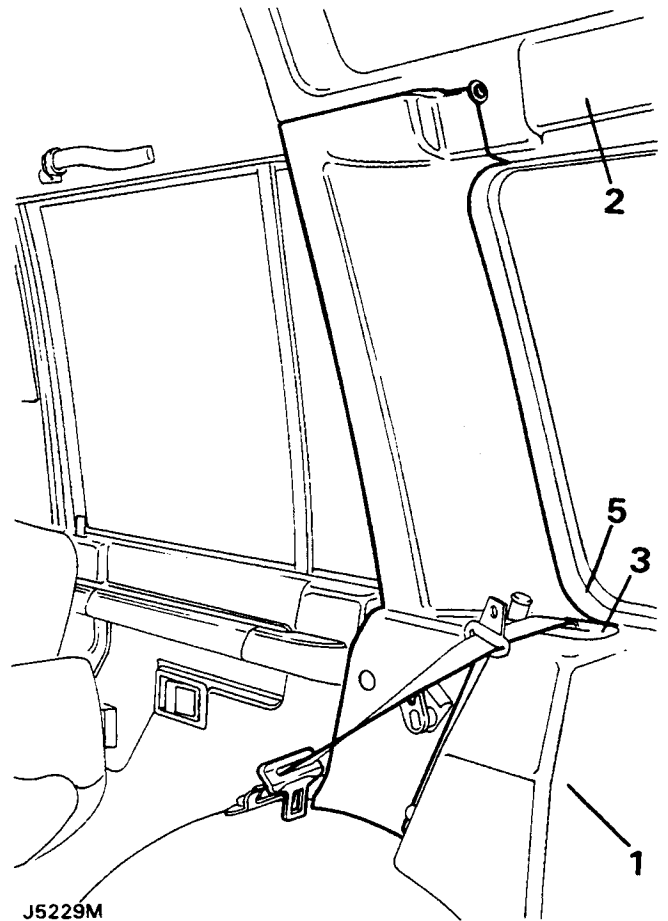
D' POST TRIM CASING

Removal

1. Remove the rear compartment lower trim panel.
2. Remove the alpine light trim casing.
3. Release the rear seat belt from the guide attached to the casing.
4. Fold down the rear seats.
5. Release the D' post casing from the rear side window seal and carefully ease the casing from the fasteners.

Refitting

6. Refit the casing in reverse order to removal.

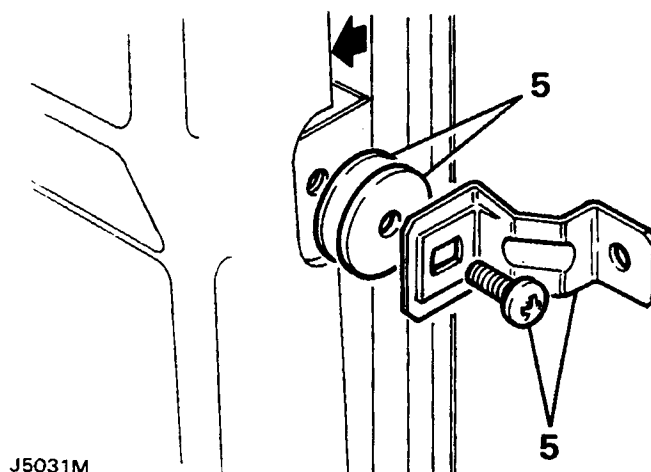
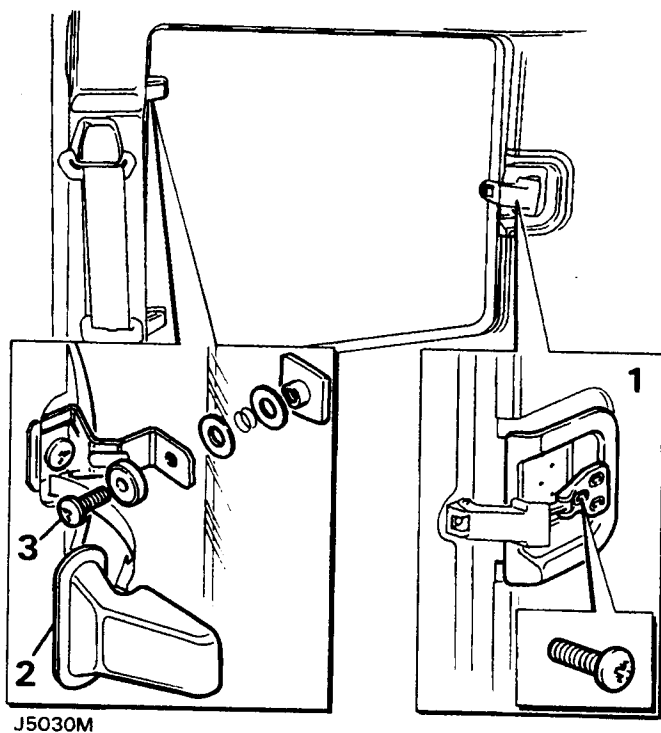


BODY SIDE OPENING WINDOWS (Three door vehicles)**Removal**

1. Remove the screws securing the catch to the body and detach the catch trim.
2. Remove the hinge finishers from the hinges.
3. Remove the screws securing the glass to the hinges, withdraw the glass and fixings taking care not to lose the joint washers.

Refitting

4. Refit the windows in reverse order to removal.



J5031M

5. Remove the screws securing the window hinges, taking care not to lose the the packing washers where fitted. Note the thickness and location of any packing washers fitted.

Refitting

6. Fit the hinges with packing washers fitted to the locations and thickness noted during removal. Do not fully tighten the screws at this stage.
7. Refit the glass to the hinges.
8. Locate the window catch trim and secure the catch to the body.
9. Close the window and secure with the catch.
10. Check the alignment and squareness of the glass, adjust as necessary by adding or deleting washers and using the elongated slots in the hinges for adjustment, finally tighten the screws.
11. Reposition the trim panel and refit the hinge finishers.
12. Refit the top seat belt bracket and the grab handle.

Body side window hinges**Removal**

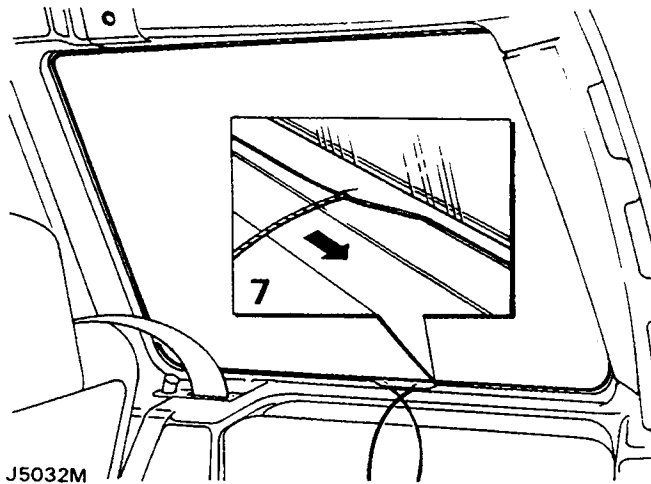
1. Remove the window.
2. Remove the passenger grab handle.
3. Detach the front seat belt top mounting from the door post.
4. Ease the trim panel away from the door post to gain access to the window hinges.

REAR SIDE FIXED WINDOWS**Removal**

1. If fitted push out the glass and remove the mounting rubber.
2. Remove the rear seat belt top fixing.

Refitting

3. Thoroughly clean the opening to be glazed.
4. Clean the glass and fit the mounting rubber, ensuring that the glass sits correctly in the groove.
5. Fit a draw cord around the exterior of the mounting rubber.
6. To aid assembly, coat the flange in the bodyside with liquid soap.
7. Position the assembled glass and rubber mounting to the opening in the body, with the tails of the draw cord fed into the interior of the vehicle.

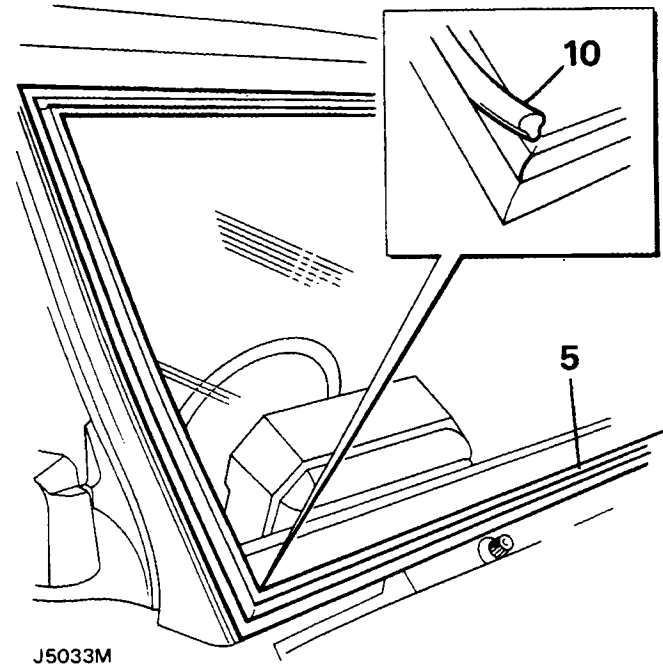


8. With assistance from a second operator, pushing the glass and mounting rubber into the opening, pull the draw cord from the mounting rubber enabling the seal to ride up over the retaining flange.
9. Ease the inner section of the mounting rubber over the interior trim panel.

WINDSCREEN GLASS**Removal**

CAUTION: Place a protective covering over the cowl panel, fascia and interior trim to prevent damage and also to prevent broken glass from entering the heater system.

1. Remove the windscreen wiper arms.
2. Remove the expander strip from the channel in the rubber moulding around the glass.
3. Remove the rubber moulding from the windscreen opening.
4. Thoroughly clean the windscreen opening and remove any broken glass.

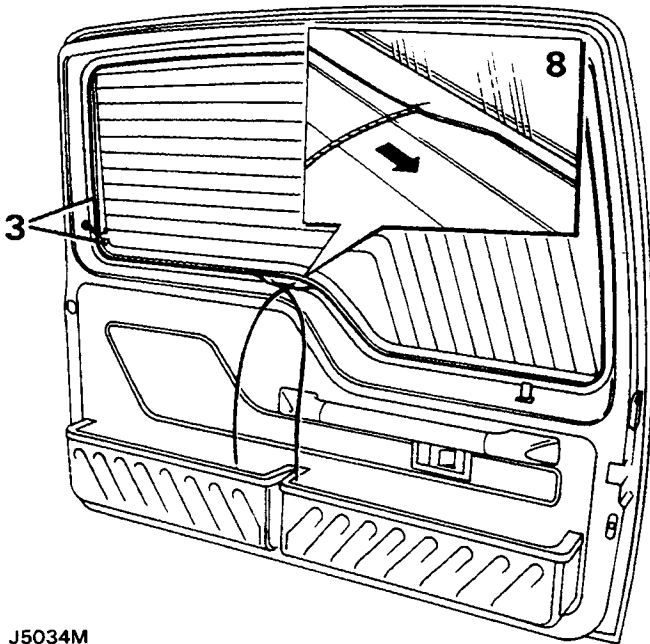
**Refitting**

5. Fit the rubber moulding to the windscreen opening.
6. Ensure that the edge of the 'A' post trim panels are fitted under the lip of the rubber moulding.
7. Smear soft soap around the glass location channel in the rubber moulding.
8. Fit the windscreen glass into either bottom corner of the location channel.
9. Work the glass into the channel using a blunt implement with a wedge type point, working up and around the seal and at the same time pushing the screen onto the rubber. Ease the lip of the seal over the glass as illustrated.
10. Using a suitable tool fit the expander strip to the windscreen moulding.

REAR DOOR GLASS

Removal

1. Remove the spare wheel from the rear door.
2. Remove the rear door wiper arm.



J5034M

3. If the glass is fitted, disconnect the heater leads from the terminals, push out the glass and remove the mounting rubber.

Refitting

4. Thoroughly clean the opening to be glazed.
5. Clean the glass and fit the mounting rubber, ensuring that the glass sits correctly in the groove.
6. Fit a draw cord around the exterior of the mounting rubber with the tails of the cord situated on the top corner of the bend at the bottom of the glass.
7. To aid assembly, coat the glass opening in the door with liquid soap.
8. Position the assembled glass and rubber mounting to the opening, with the tails of the draw cord fed into the interior of the vehicle.

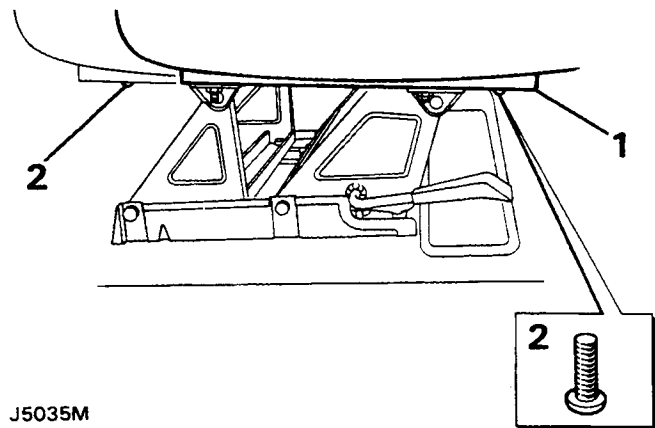
9. With assistance from a second operator, pushing the glass and mounting rubber into the opening, pull the draw cord from the mounting rubber enabling the seal to ride up over the retaining flange.
10. Connect the heater leads to the terminals on the glass.

FRONT SEATS (Three door vehicles)

WARNING: Care must be taken if the seat lifting mechanism is operated when the seat is removed from the base otherwise personal injury could occur.

Removal

1. Slide the seat to the full extent rearwards and remove the rear seat to base securing bolts.
2. Slide the seat forward and remove the front seat to base securing bolts.
3. Lift the seat from the base and withdraw from the vehicle.



J5035M

Refitting

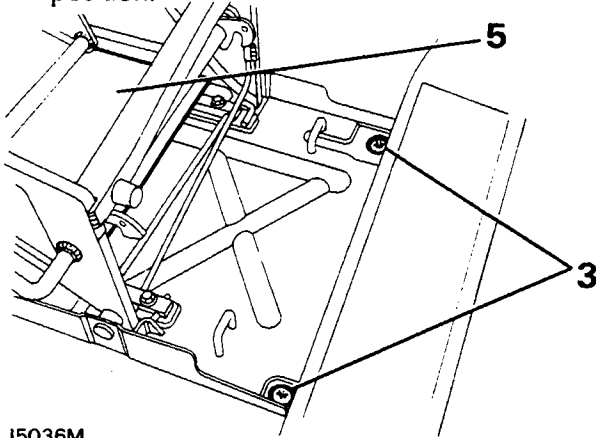
4. Refit the seat to the base in reverse order to removal.

Seat base

WARNING: Care must be taken if the seat lifting mechanism is operated when the seat is removed from the base otherwise personal injury could occur.

Removal

1. Remove the seat from the base.
2. Carefully operate the seat mechanism to raise it to the tilt position.
3. Remove the two bolts securing the rear of the base to the floor.
4. Return the seat mechanism to the upright position.



J5036M

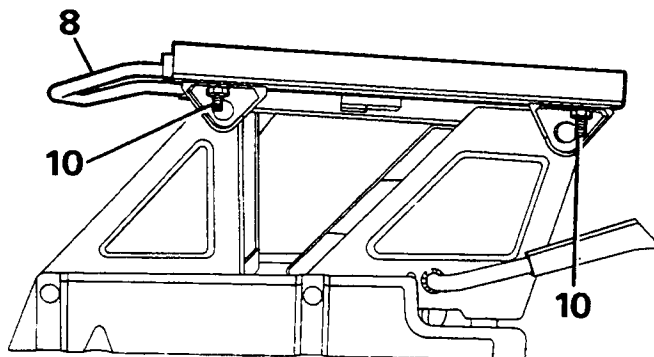
5. Pull the carpet flap forward to expose the front securing bolts, remove the bolts and lift out the seat base.

Refitting

6. Refit the seat base in reverse order to removal.

Seat base runners**Removal**

7. Remove the seat from the base.
8. Spring the release handle off its locations on the runners.
9. Slide the runners forward sufficient to gain access to the rear securing bolts and rearward for the front bolts.
10. Remove the bolts and withdraw the runners.



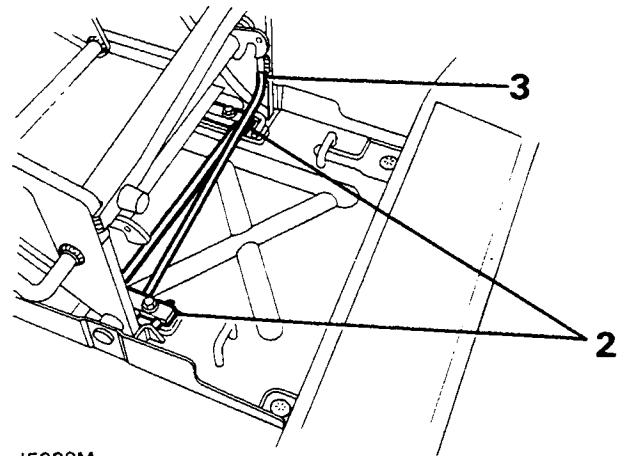
J5037M

Refitting

11. Fit the runners and release handle in reverse order to removal.
12. Refit the seat to the base.

Seat base torsion bars**Removal**

1. Tilt the seat assembly forward.
2. Remove the torsion bar clamps.
3. Extract the right angled ends of the torsion bars from the brackets on the seat base and withdraw.



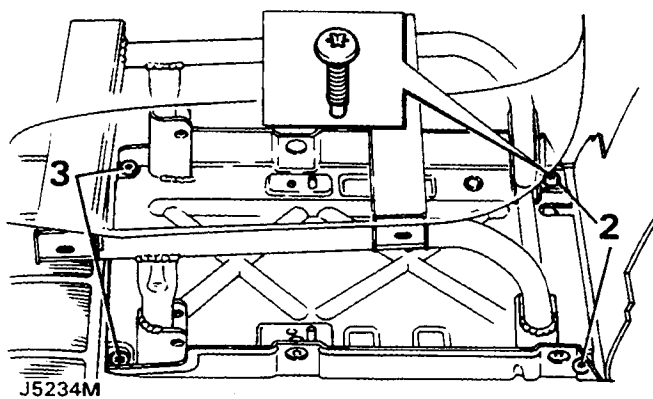
J5038M

Refitting

4. Fit the torsion bars in reverse order to removal.

FRONT SEATS (Five door vehicles)**Removal**

1. Remove the finisher from the seat base.
2. Slide the seat to the full extent rearwards and remove the front base to floor securing screws.



J5234M

3. Slide the seat forwards and remove the rear base to floor securing screw.
4. Lift the seat and base assembly and withdraw from the vehicle.

Refitting

5. Refit the seat and base assembly in reverse order to removal.

SEAT BASE

Removal

1. Invert the seat and remove the four screws securing the seat to the base.

Refitting

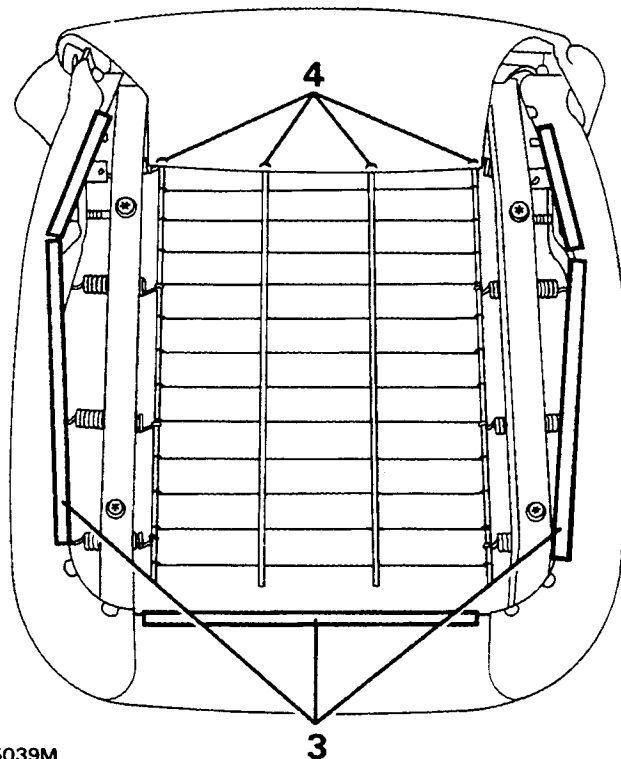
2. Refit in reverse order to removal.

Front seat covers

Cushion

Removal

1. Remove the seat from the base.
2. Invert the seat on a suitable clean bench.
3. Detach the seat cover retaining clips from the frame.
4. Release the four wire hooks securing the squab cover to the lower spring frame.
5. Release the cushion rear clip from the frame and detach the cushion complete with cover.
6. Remove the cover from the cushion.



J5039M

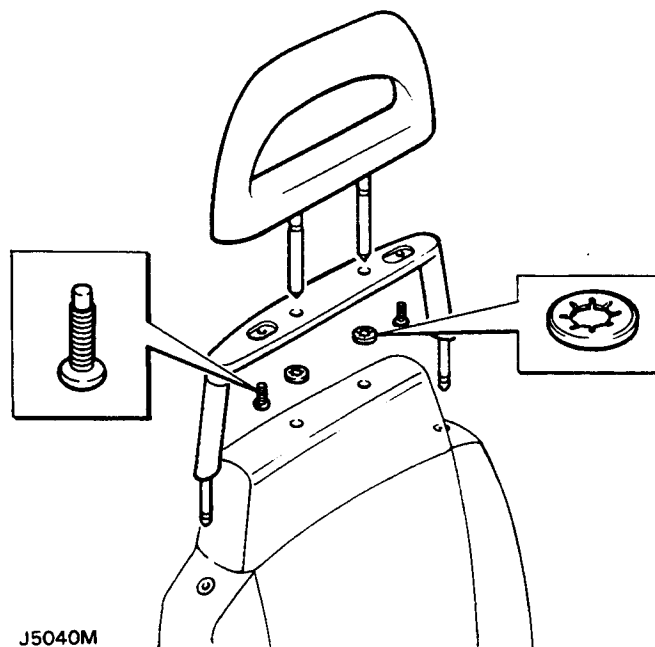
Refitting

7. Refit the cover and cushion in reverse order of removal.

Squab

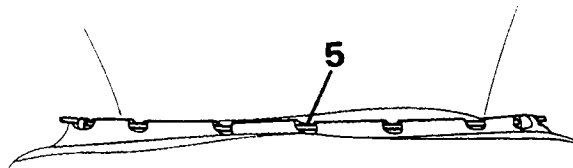
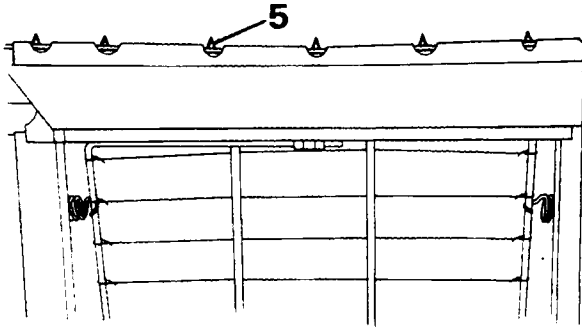
Removal

1. Remove the headrest and grab handle assembly.



J5040M

2. Remove the backrest adjustment handwheel and actuator.
3. Release the four wire hooks securing the squab cover to the lower spring frame.
4. Fold back the cover and release the sides of the cover from the wire formers.
5. Release the wire retainer from the hooks on the lower frame and feed the cover flap and retainer through to the front of the seat.



J5041M

6. Working from the rear of the seat, raise the cover and remove the tape securing the lower portion of the squab halves together.
7. Raise the rear squab half, remove the four wire clips securing the lower cover retainer to the spring frame and pass the retainer through the front half of the squab.
8. Release the velcro fasteners securing the cover to the front of the squab and raise the cover.
9. Remove the remaining tape retainers, raise the rear squab half, remove the three wire clips securing the upper cover retainer to the spring frame, pass the retainer through the front half of the squab and complete the removal of the cover.

Refitting

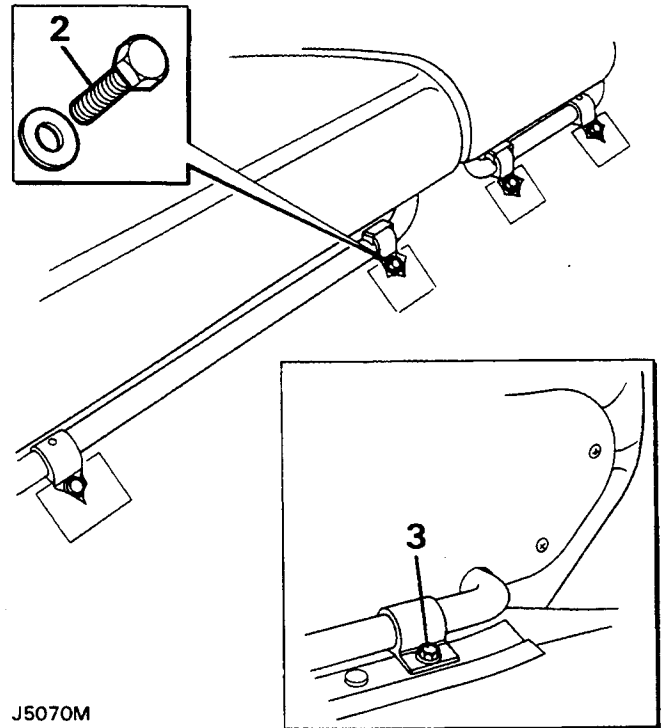
10. Locate the cover over the top section of the backrest.
11. Feed the upper cover retainer through the front squab half and secure to the spring frame with the three wire hooks.
12. Secure the squab halves together, with adhesive tape, leaving access at the bottom for securing the lower retainer.

13. Feed the lower cover retainer through the front squab half and secure to the spring frame with the four wire hooks.
14. Pass the wire retainer and front flap of the cover through to the rear and fit the wire to the hooks on the lower frame.
15. Refit the seat to the vehicle.

REAR PASSENGER SEATS

Removal

1. Feed the seat belts through the seats into the rear compartment.
2. With the seats in the upright position, remove the bolts from the front of the hinges.
3. Fold the seats forward, remove the bolts from the rear of the hinges and withdraw the seats from the vehicle.



J5070M

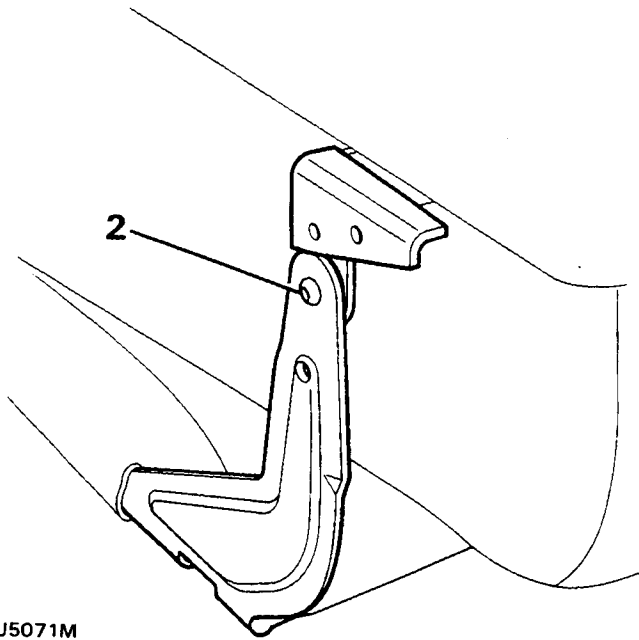
Refitting

4. Refit the seats in reverse order of removal.

Rear seat squab

Removal

1. Fold the rear seat down.
2. Remove the two seat squab securing bolts.



J5071M

3. Withdraw the seat squab from the seat assembly.

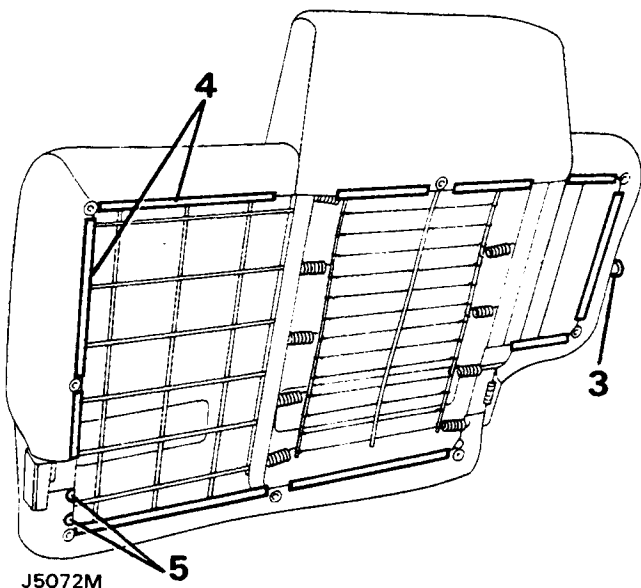
Refitting

4. Refit the rear seat squab in reverse order to removal.

Rear seat squab cover

Removal

1. Remove the rear seat squab from the seat assembly and withdraw it from the vehicle.
2. Remove the rear seat back finisher from the squab.
3. Remove the squab striker plate.
4. Release the squab cover from the frame.
5. Remove the securing clips and remove the cover from the squab.



J5072M

Refitting

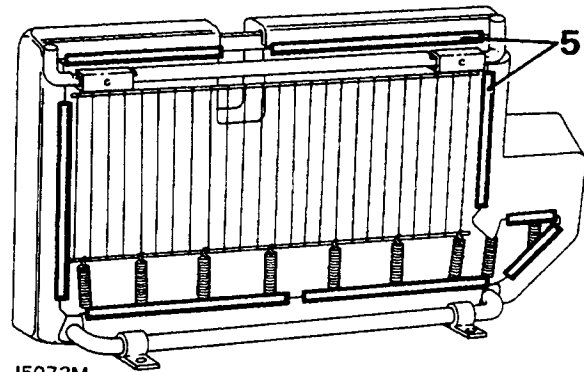
6. Refit the seat squab cover in reverse order to removal.

Rear seat cushion cover

Removal

NOTE: The procedure for removing both left and right hand seat cushions is the same.

1. Remove the rear seat assembly from the vehicle.
2. Remove the seat squab.
3. Remove the seat cushion.
4. Remove the cushion base cover retaining screws and withdraw the cover.
5. Release the seat cover securing clips at the frame and at the seat belt aperture.
6. Remove the cover from the cushion.



J5073M

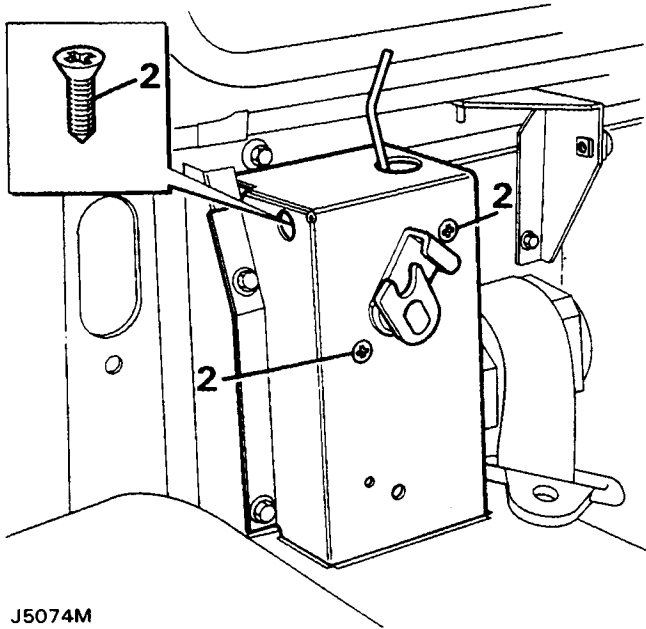
Refitting

7. Refit the cushion cover in reverse order to removal.

Split rear seat locking mechanism

Removal

1. Remove the front body side trim casing.
2. Remove the three screws securing the latch to the tower, noting that access to the single screw is gained through the hole in the front of the tower.
3. Retrieve the latch from the opening at the rear of the tower. If necessary retrieve the single screw.



J5074M

4. The operating rod can be removed from the latch by releasing it at the plastic clip.

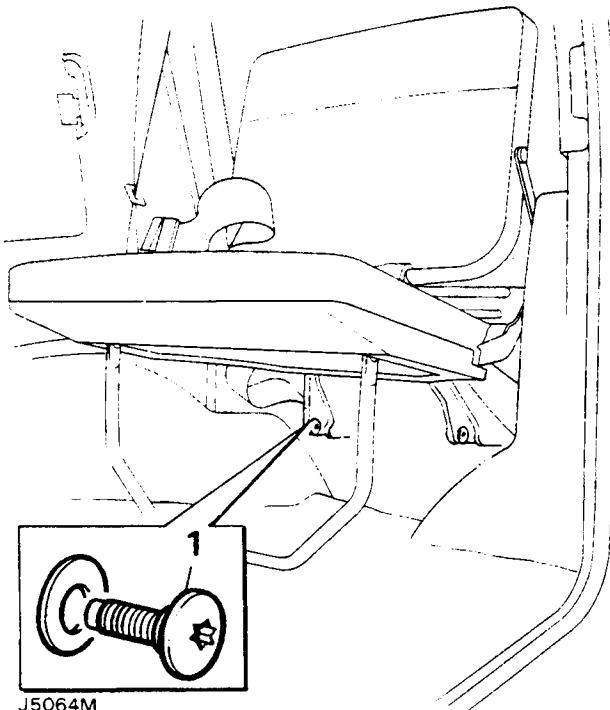
Refitting

5. Refit the locking mechanism in reverse order to removal, setting the release button to achieve a gap of 5 - 8 mm.

REAR FOLD DOWN SEATS

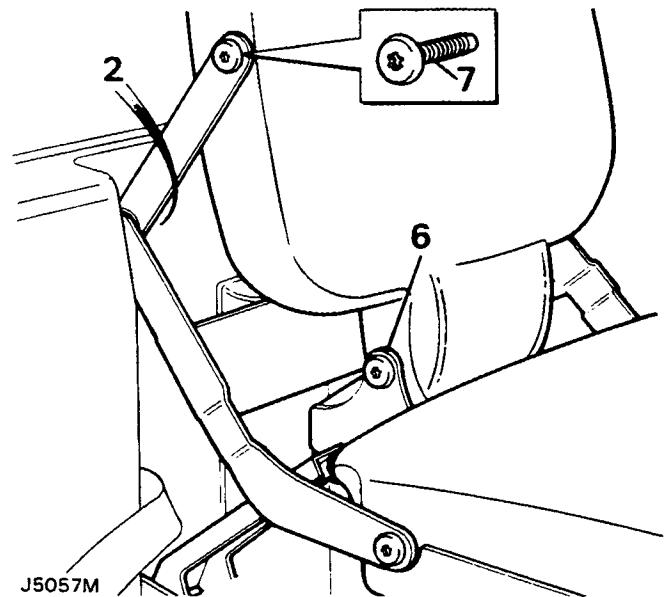
Removal

1. Locate the seat in the down position, displace the seat belts from the stowed position, and remove the screws from the lower brackets.



J5064M

2. Fold the seat up and remove the screws from the upper brackets.
3. Withdraw the seat assembly.



J5057M

Refitting

4. Refit the fold down seats in reverse order of removal.

Seat squab

Removal

5. Remove the seat assembly from the vehicle.
6. Remove the pivot bolts and washers securing the seat squab to the frame.

NOTE: The pivot bolts, securing the seat squab and cushion, are fitted with a wavy washer under the head and a plain washer between the link or bracket. Ensure that these washers are fitted in the correct locations when reassembling the seat.

7. Remove the pivot bolts and washers securing the hinge links to the seat squab.
8. If necessary remove the clips securing the cover and detach the cover.

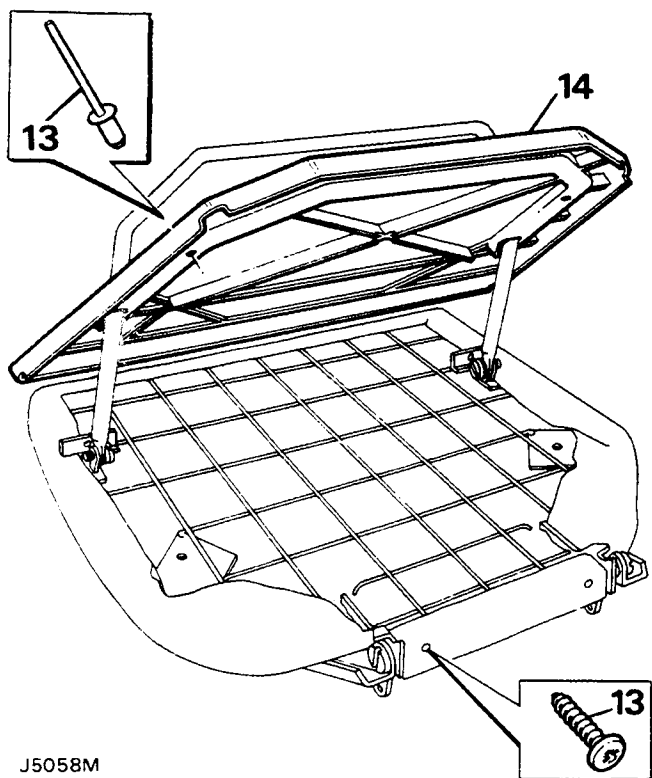
Refitting

9. Refit the seat squab in reverse order to removal.

Seat cushion

Removal

10. Remove the seat from the vehicle.
11. Remove the seat squab.
12. Remove the pivot bolts and washers securing the hinge bracket and detach the bracket.
13. Invert the seat base and remove the screws and rivets securing the base cover to the base.
14. Raise the seat base cover, to gain access to the stay pivot bolts, remove the bolts and washers and withdraw the stay and seat base cover.
15. If necessary remove the clips and detach the cushion cover.



J5058M

Refitting

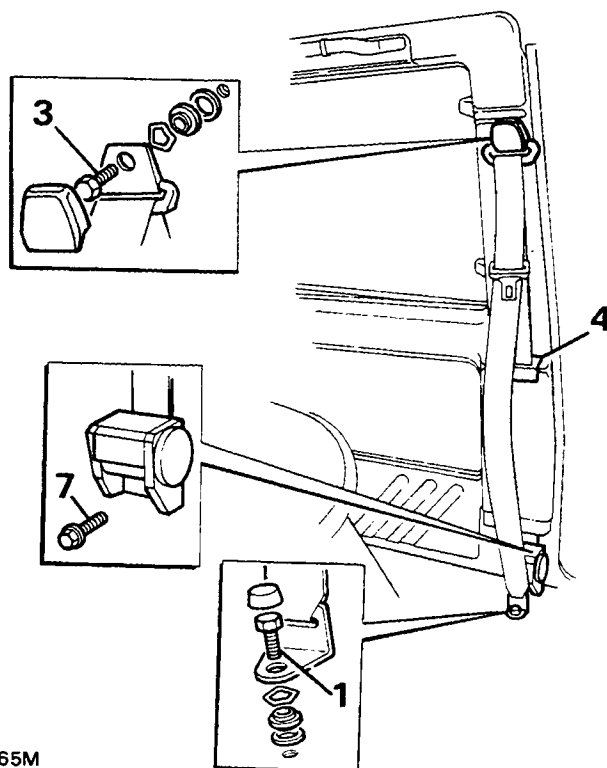
16. Refit the seat cushion in reverse order to removal.

SEAT BELTS

Front seats (Non-adjustable)

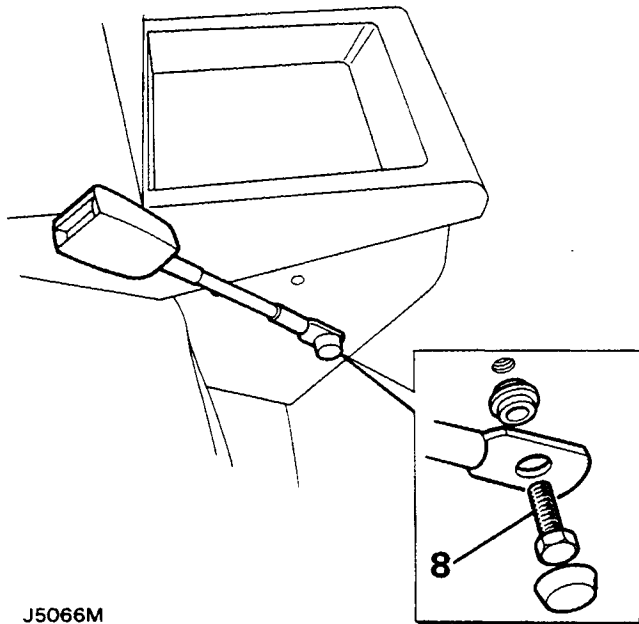
Removal

1. Remove the bolt securing the lower seat belt mounting bracket to the floor.



J5065M

2. Remove the trim panel from over the inertia reel.
3. Remove the bolt securing the upper seat belt mounting bracket.
4. Remove the seat belt guide from the centre of the trim panel.
5. Attach a length of string to the lower mounting bracket, feed both mounting brackets and the buckle through the guide aperture in the trim casing and withdraw them from the bottom aperture adjacent to the inertia reel.
6. Remove the string from the seat belt leaving it threaded through the trim casing.
7. Remove the bolt securing the inertia reel and withdraw the seat belt assembly.
8. To remove the seat belt stork, remove the bolt cover, bolt and spacer and withdraw the stork.



J5066M

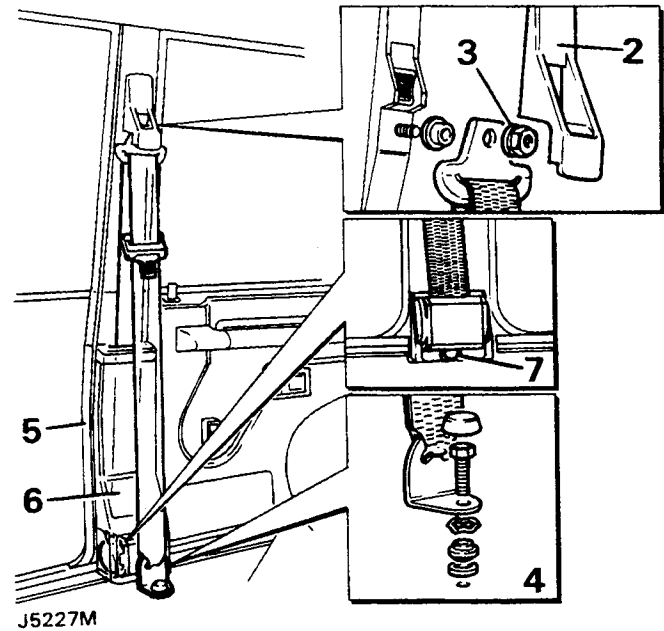
Refitting

9. Extend the seat belt from the inertia reel to allow access to the fixing location.
10. Position the reel to its location and secure with the bolt. Tighten the bolt to the correct torque.
11. Attach the string to the lower mounting bracket, draw the mounting brackets and buckle through the trim casing and out through the guide aperture.
12. Secure the upper mounting bracket, tightening the bolt to the correct torque.
13. Fit the guide to its aperture in the trim panel.
14. Refit the trim section over the inertia reel.
15. Fit the lower bracket to the floor, tightening the bolt to the correct torque.

FRONT SEAT BELTS (Adjustable type)**Removal**

1. Move the front seat to the fully forward position.
2. Raise the moulded cover to gain access to the seat belt upper mounting bracket.
3. Using an open ended spanner remove the flanged securing nut and detach the upper mounting bracket and stepped spacer from the stud.
4. Remove the bolt securing the lower mounting bracket to the floor.
5. Detach the door seals from the 'B' post sufficiently to allow removal of the lower trim panel from the post.

6. Release the seat belt from the split section at the top of the trim panel and withdraw the panel.
7. Remove the securing bolt and detach the inertia reel from the bottom of the 'B' post.



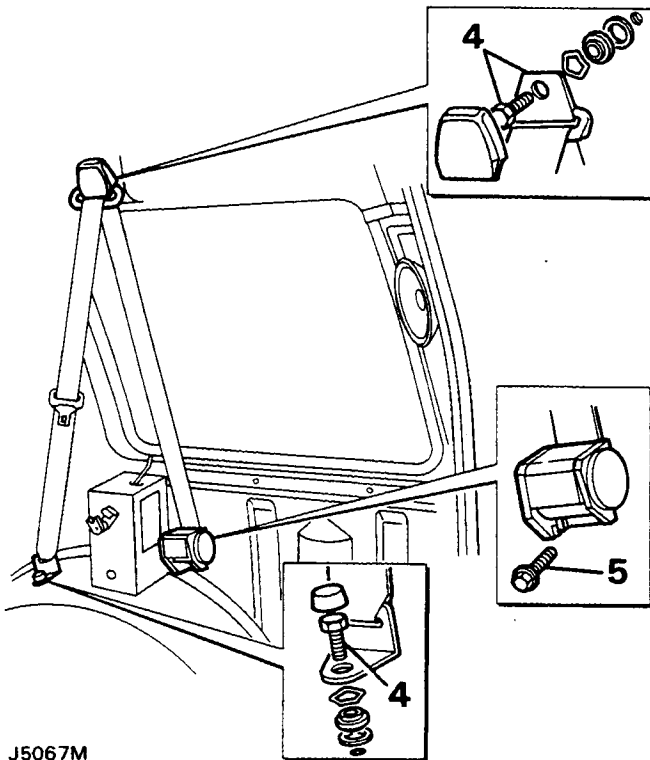
J5227M

Refitting

8. Refit the seat belt in reverse order to removal, ensuring that the belt is not twisted. Finally tighten the fixings to a torque of 20.3 Nm (15 lbf ft).

Rear seats (outer seat belts)**Removal**

1. Remove the rear fold down seat (if applicable).
2. Remove the speaker cover from the rear quarter.
3. Remove the rear bodyside lower trim panel.
4. Remove the bolts securing the brackets to the wheel arch and upper bodyside.
5. Remove the bolt securing the inertia reel to the bodyside and withdraw the seat belt.
6. Remove the seat belt buckle strap from the floor mounted bracket by releasing the hook.



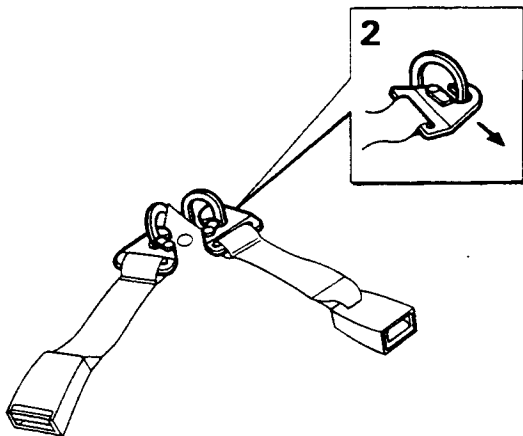
J5067M

Refitting

8. Refit the seat belt in reverse order to removal. Tightening the securing bolts to the correct torque.

Rear centre seat

1. Pull both halves of the seat belt through to the rear of the seat.
2. Disconnect the hooks from the floor mounted brackets and withdraw the seat belt.



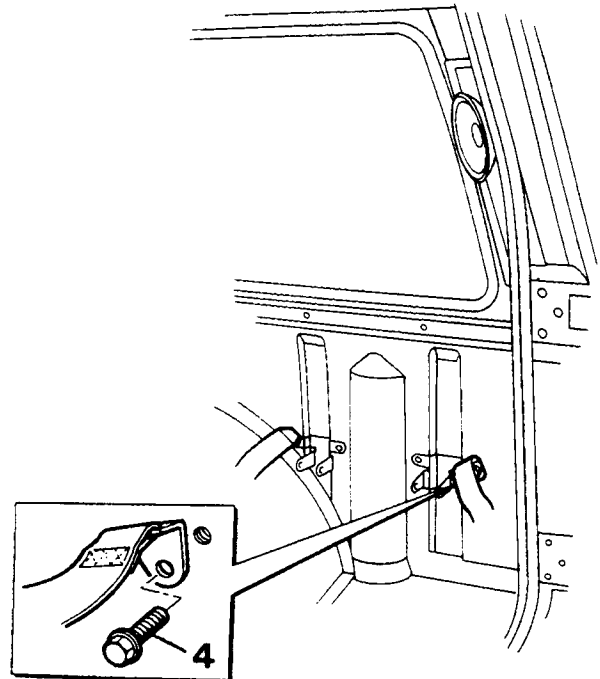
J5068M

Refitting

3. Refit the seat belt in reverse order to removal.

Rear fold down seats**Removal**

1. Remove the fold down seat.
2. Remove the speaker cover from the rear quarter.
3. Remove the rear bodyside trim panel.
4. Remove the bolts securing the seat belt halves to the bodyside.



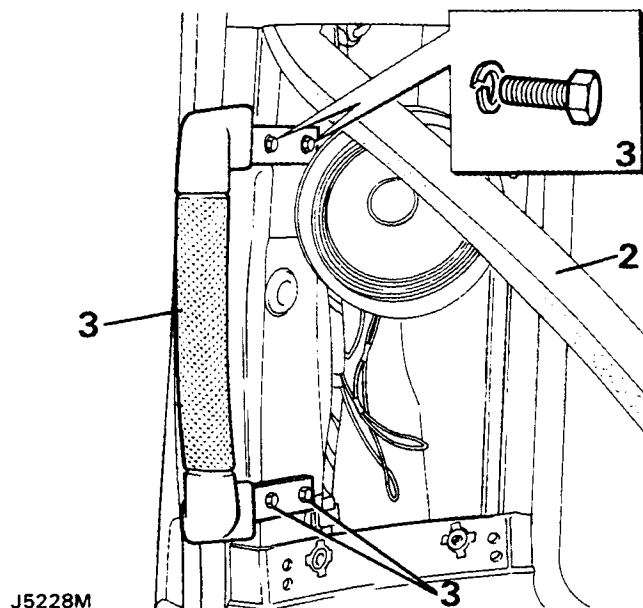
J5069M

Refitting

5. Refit the seat belt halves in reverse order to removal, tightening the bolts to the correct torque.

REAR GRAB HANDLE**Removal**

1. Remove the rear quarter trim panel.
2. Detach the foam strip.
3. Remove the four securing bolts and detach the handle.



Refitting

4. Refit the grab handle in reverse order to removal.

BODY REPAIRS, GENERAL INFORMATION

The body consists of a steel frame to which alloy outer panels are attached. The decker panel, front wings, side door outer panels and body side outer panels are made from a special light magnesium-aluminium alloy.

These aluminium panels can be effectively repaired using the 'Argon Arc' process of welding, as this process is a specialist operation it is recommended that only an operator skilled in welding aluminium or a specialist body shop undertake such repairs.

Under certain conditions it may not be practical to repair an exterior damaged panel, in these circumstances all exterior panels, except for the roof, can be removed and replacements fitted.

Panel beating

1. Aluminium alloy panels can be beaten out after accidental damage in the same way as sheet steel. However, under protracted hammering the material will harden, it must then be annealed to prevent the possibility of cracking. This can be done by the application of heat to the area, followed by slow air cooling, as the melting point of the material is low, heat must be applied slowly and carefully.

CAUTION: Before applying heat to any panel ensure that the panel is clean and free from underseal and that the area to be worked on is well clear of any combustible materials. Ensure that all necessary precautions are taken against fire.

Welding

General

CAUTION: The battery negative lead must be disconnected before commencing welding operations.

WARNING: If welding is to be carried out in the vicinity of the fuel tank the fuel system must be drained and the tank removed before the welding is commenced.

1. Clean off all grease and paint, dry thoroughly and then clean the edges to be welded, and an area at least 15 mm on either side of the weld, with a stiff wire scratch brush or steel wool. Also clean the welding rod or strip with steel wool. Cleanliness is essential to achieve a satisfactory repair.
2. Use only 5 per cent magnesium aluminium welding rod (5Mg/A), when carrying out repairs to the aluminium body panels.

Welding tears and patches

1. If a tear extends to the edge of a panel, start the weld from the end away from the panel edge, also at this point drill a small hole to prevent the crack from spreading, then work towards the edge.
2. When welding a long tear, or making a long welded joint, tack the edges to be welded at intervals of from (50 to 100mm) with spots. This is done by melting the metal at the starting end and fusing it into a small amount of the filler rod, repeating the process at the suggested intervals. After this, weld continuously along the joint increasing the speed of the weld as the material heats up.
3. When patching, cut a patch to the correct shape for the hole to be filled, but of such size to leave a gap of 0,80 mm between the patch and the panel, and then weld as above. Never apply an overlay patch.

PAINTWORK

General Information

The initial preparation of a repaired or replacement panel is very important to ensure that when finished the paintwork is of a standard that meets and matches the existing bodywork. Replacement panels and repairs must be thoroughly degreased with Berger Preclean 802.0516 or a suitable alternative, any unsound paint must be removed using Berger Double Strength Meltic 301.8051. The paint manufacturers instructions should always be referred to.

Paintwork processes should be performed by a specialist bodyshop where paint spraying can be undertaken in a controlled environment where temperatures are kept constant and the atmosphere dust free.

The flow chart on the following page gives a guide to preparing and painting a panel. Wherever possible refer to the Berger Vehicle Refinishes Product Data and Application Sheets for further information.

STEAM CLEANING

To prevent consequential rusting, any steam cleaning within the engine bay must be followed by careful re-waxing of the metallic components affected. Particular attention should be given to the steering column, engine water pipes, hose clips and the ignition coil clamp.

SUBSTRATE	ALUMINIUM PANELS	
	PANEL REPAIR	REPLACEMENT PANEL
<p>PREPARATION</p> <p>Wet for using P60 Grade paper or dry sand using P240 grit discs.</p>		<p>Wet flat using P60 Grade paper or dry sand using P240 grit discs. Care must be taken to avoid cutting through to bare aluminium.</p>
<p>BODY FILLING</p> <p>If filling is required, thoroughly abrade bare aluminium area to be filled and apply Standox Polyester stopper 430-5029.</p>		<p>If filling is required, fill small indentations with Standox Polyester stopper 430-5029.</p>
<p>ETCHING</p> <p>Etch the bare aluminium and filler with auto-speed self etch primer 414-1171, mixed 1:1 with activator 801-7995. Apply one coat and allow to dry for approximately 20 minutes. Recoat within 1 hour.</p>		<p>This process is not required if the original electrocoat primer is in sound condition. IF NOT</p>
<p>PRIMING</p> <p>To obtain maximum adhesion and excellent build, apply Standox 2K 4:1 full primer 405-0383-6. Coats of 30-40 microns can be wet flatted with P60 grade paper after 45 minutes at 20°C.</p>		
<p>COLOUR COATING</p> <p>Apply either Standox 2K Standocryl or Standox Metallic Basislack to the colour required. Hardeners and thinners will vary depending upon system employed, conditions available, temperature and size of vehicle etc. Refer to paint manufacturers Technical Information Sheet for correct selection.</p>		

BODY PANELS REPAIR AND REPLACEMENT

General

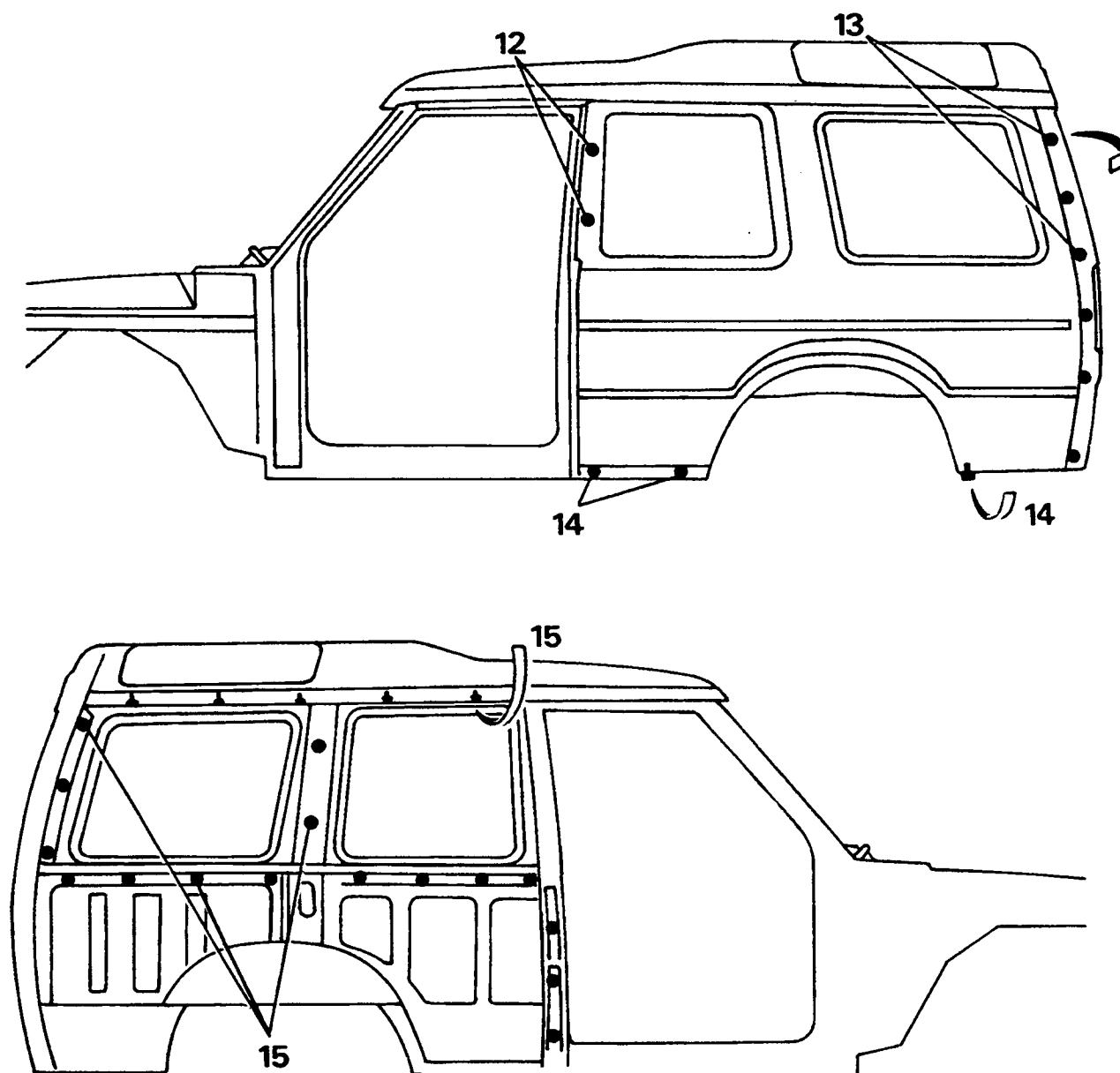
CAUTION: When using automotive sealants the manufacturers instructions must be followed, as a general guide, avoid eye contact, prolonged skin contact and inhalation of vapours. Use only in well ventilated areas. In cases of inadvertent eye contact, rinse immediately with clean cold water and seek medical advice as soon as possible. After contact with the skin wash with soap and water and replace any contaminated clothing.

Preparation

Before fitting new or repaired body panels both the panel and the monocoque should be correctly prepared. All existing sealant must be removed, this can be made easier by softening the sealant with 3M 8984 General Purpose Adhesive Cleaner or White Spirit before removal with a scraper.

After the sealant has been removed all bare metal must be primed with an etch primer (Berger Standox 1:1 Full Primer 405.0383.6, 1:1 Activator 801.7997.5).

If the door or bonnet hinges are removed the bare metal exposed must be etch primed.



J5042M

Body side panel and rear quarter panel (Three door vehicles)

Removal

NOTE: The procedure for removing right or left hand body side panels is identical except for disconnecting the fuel filler pipe on the right hand panel.

1. Disconnect the negative lead from the battery.
2. Remove the rear bumper assembly.
3. Remove the sill finisher.
4. Working inside the vehicle remove the side facing rear seat.
5. Remove the rear side, alpine light and front body side trim panels.
6. Remove the body side opening window, leaving the hinges in-situ. If renewing the side panel remove the rubber seal from the window aperture.
7. If renewing the side panel remove the fixed side window and its mounting rubber.
8. Remove the rear lamp assembly and displace the rubber boot from the outer panel.
9. Drill out the two pop-rivets securing the rear speaker mounting bracket to the body side panel.

CAUTION: Prior to disconnecting the fuel filler and breather hoses check the level of fuel in the tank. drain as necessary to prevent spillage.

10. Working under the vehicle slacken the jubilee clips securing the filler and breather hoses and disconnect the hoses from the tank, RH body side panel only.
11. Disconnect the fuel filler negative lead, RH body side panel only.
12. Remove the capping from the 'B/C' post and remove the two bolts securing the side panel to the post.
13. Remove the six countersunk self tapping screws securing the rear quarter panel to the 'E' post.
14. Remove the three bolts securing the bottom of the side panel on the exterior of the vehicle. (One adjacent to the rear mudflap and two between the rear wheel arch and the sill finisher).

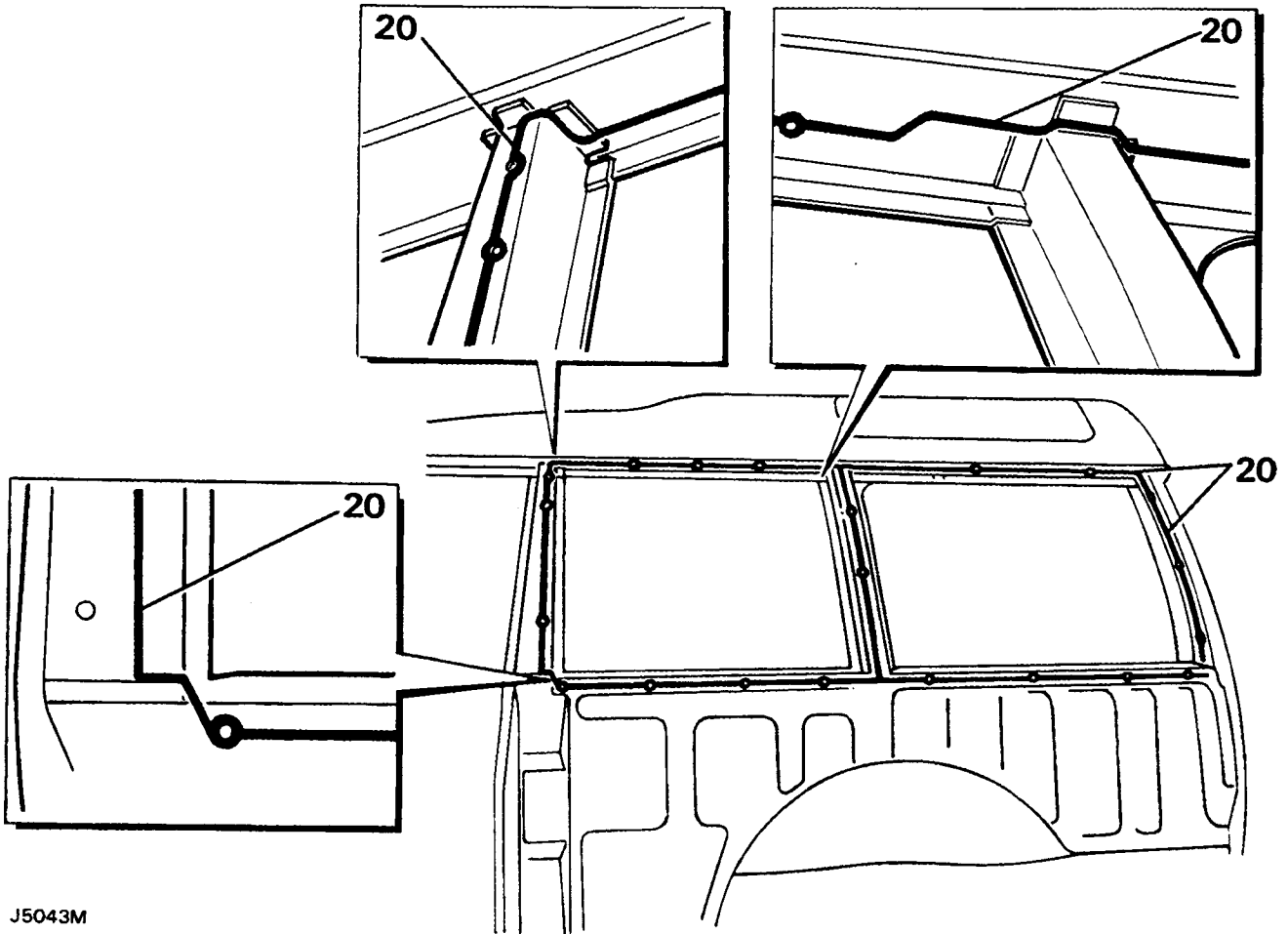
15. From the interior of the vehicle remove the twenty one bolts securing the side panel.
16. Starting from the 'B/C' post and working towards the rear of the vehicle, ease the panel away from the body to break the seal. When the seal hold has been completely broken, push the panel towards the rear of the vehicle, to disengage the rear quarter panel from the 'E' post, and lift the side and rear quarter panel assembly clear.
17. If the panel being removed is a right hand panel and is being renewed, remove the fuel filler pipe.

Cleaning/painting

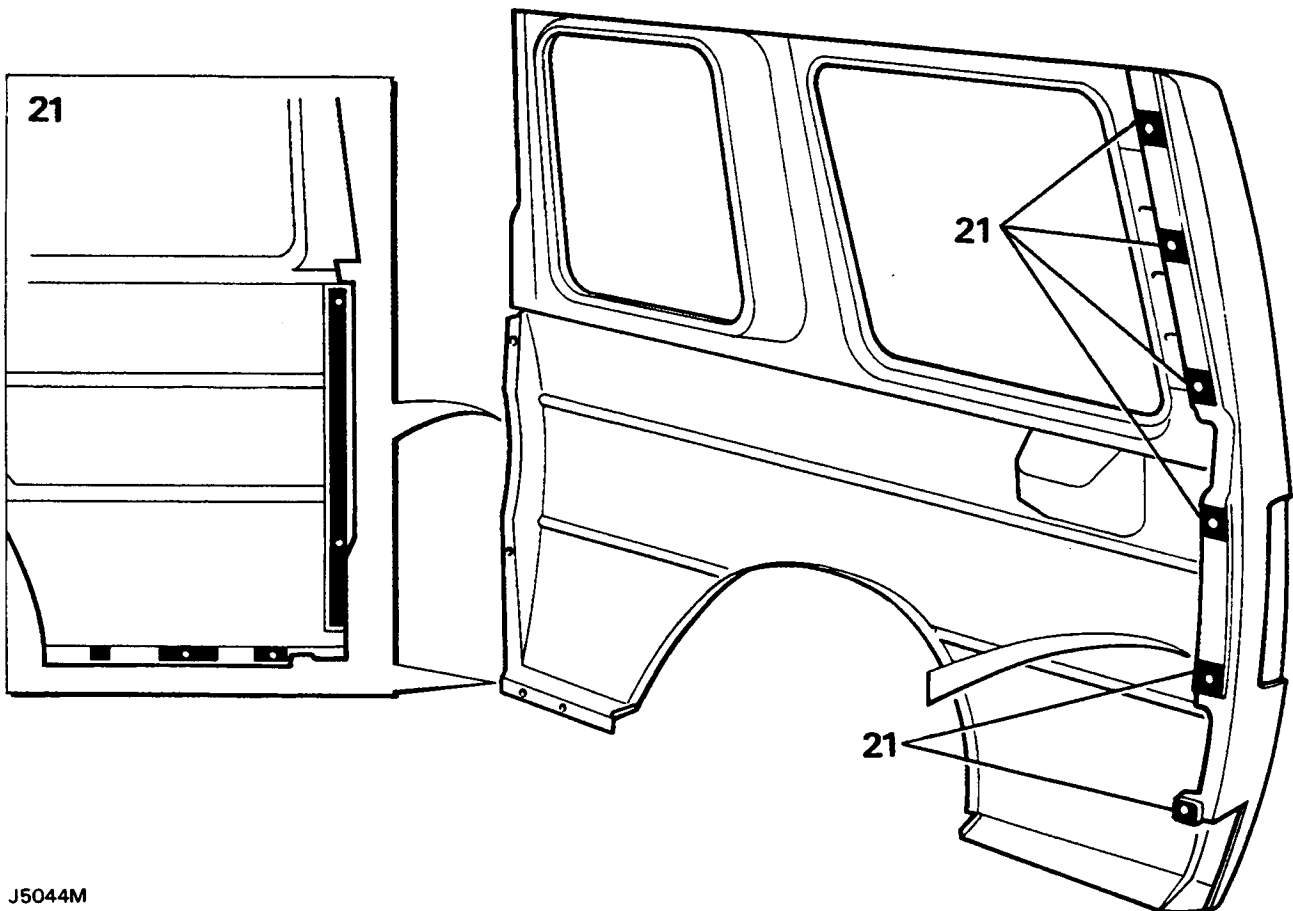
18. Thoroughly clean all traces of existing sealant from the mating faces of the body and panel.
19. Paint the cleaned surfaces with etch primer.

Refitting

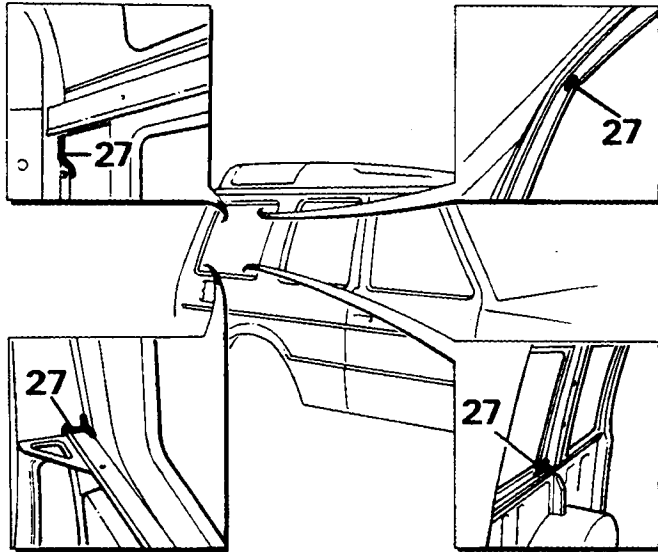
20. Apply a 6 mm bead of 3M 8645 Auto Joint and Seam Sealer to the area's of the monocoque illustrated.
21. Apply 20 x 20 mm squares of 3M 8572 Bolted Panel Sealer to the inner faces of the six securing screw holes in the rear quarter panel and strips of panel sealer to the inner faces of the panel as illustrated, ensuring that sufficient clearance is allowed at the bottom of the panel to prevent the blockage of drain holes.
22. Locate the panel with the body, ensuring that the sealant is not displaced, and loosely fit the twenty one bolts securing the panel from inside the body.
23. Loosely fit the six countersunk self tapping screws securing the rear quarter panel to the 'E' post and the three screws securing the bottom of the body side panel.
24. Starting with the five bolts securing the top of the panel evenly tighten the bolts to draw the panel upwards to its correct location.
25. Tighten the remaining bolts and the six screws at the 'E' post ensuring a satisfactory seal between the mating faces.
26. Clean off any surplus sealant from exposed surfaces.
27. Thumb 3M 8572 Bolted Panel Sealer into all corners of the window apertures to seal any panel mismatches.



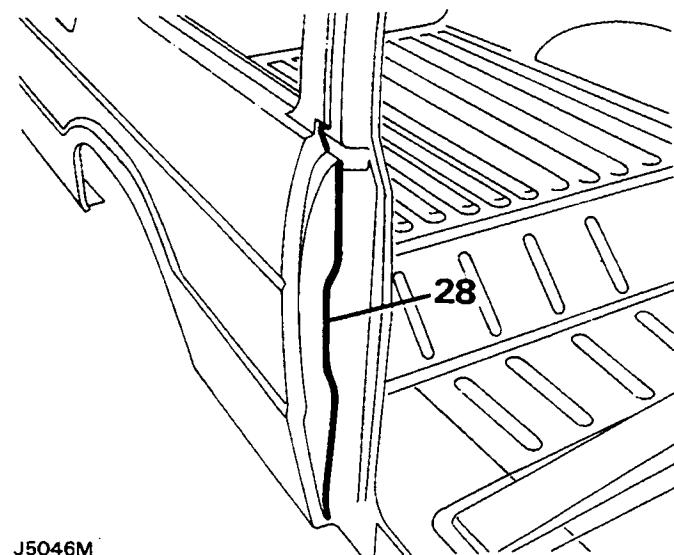
J5043M



J5044M



J5045M



J5046M

28. Apply a bead of 3M 8651 Flexseal to the joint at the lower portion of the B/C post, tooling the bead to produce a smooth cosmetically acceptable finish.
29. Paint as necessary, referring to the paint manual.
30. Refit the capping to the B/C post and reverse operations 1 to 11 to refit the windows and internal trim etc.

BODY SIDE PANEL AND REAR QUARTER PANEL (Five door vehicles)

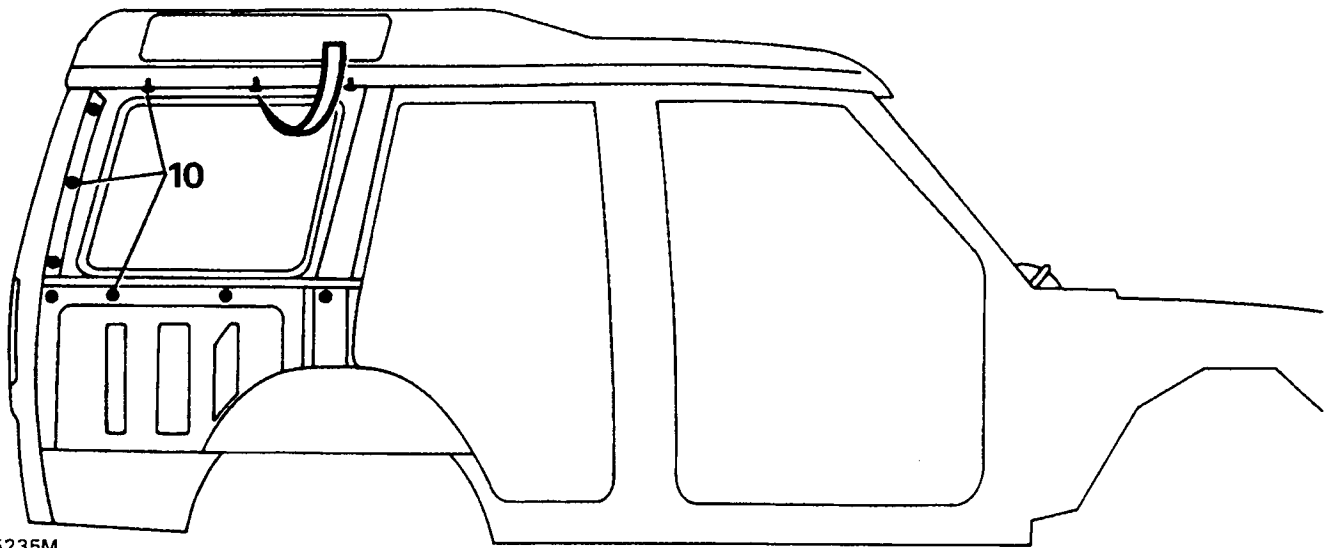
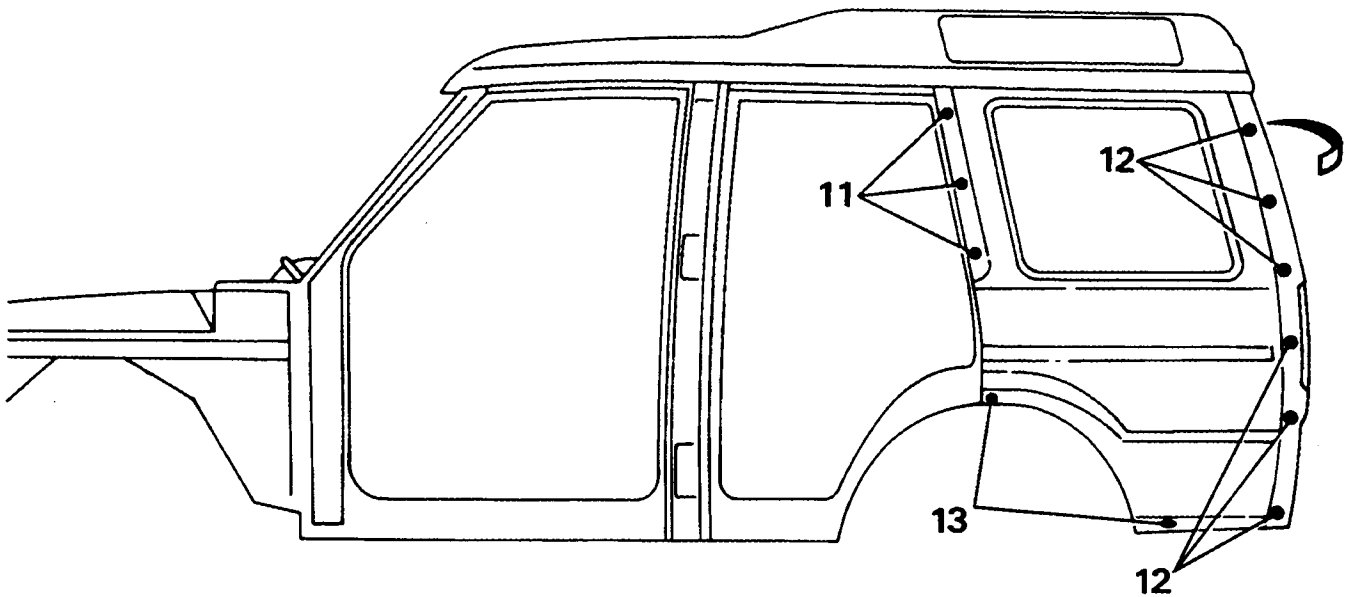
Removal

NOTE: The procedure for removing right or left hand body side panels is identical except for disconnecting the fuel filler pipe on the right hand panel.

1. Disconnect the negative lead from the battery.
2. Remove the rear bumper assembly.
3. Working inside the vehicle remove the side facing rear seat.
4. Remove the rear side, alpine light and 'D' post trim panels.
5. If renewing the side panel remove the side window and its mounting rubber.
6. Remove the rear lamp assembly and displace the rubber boot from the outer panel.
7. Drill out the two pop-rivets securing the rear speaker mounting bracket to the body side panel.

CAUTION: Prior to disconnecting the fuel filler and breather hoses check the level of fuel in the tank. Drain as necessary to prevent spillage. Observing the safety warnings detailed in Section 1.

8. Working under the vehicle slacken the jubilee clips securing the filler and breather hoses and disconnect the hoses from the tank, RH body side panel only.
9. Disconnect the fuel filler negative lead, RH body side panel only.
10. Working through the three apertures in the 'D' post, remove the nuts and washers and detach the 'D' post capping.
11. Remove the three countersunk self tapping screws securing the side panel to the 'D' post.
12. Remove the six countersunk self tapping screws securing the rear quarter panel to the 'E' post.
13. Remove the two bolts, one inside the wheel arch and one at the bottom of the side panel.
14. From the interior of the vehicle remove the ten bolts securing the side panel.



J5235M

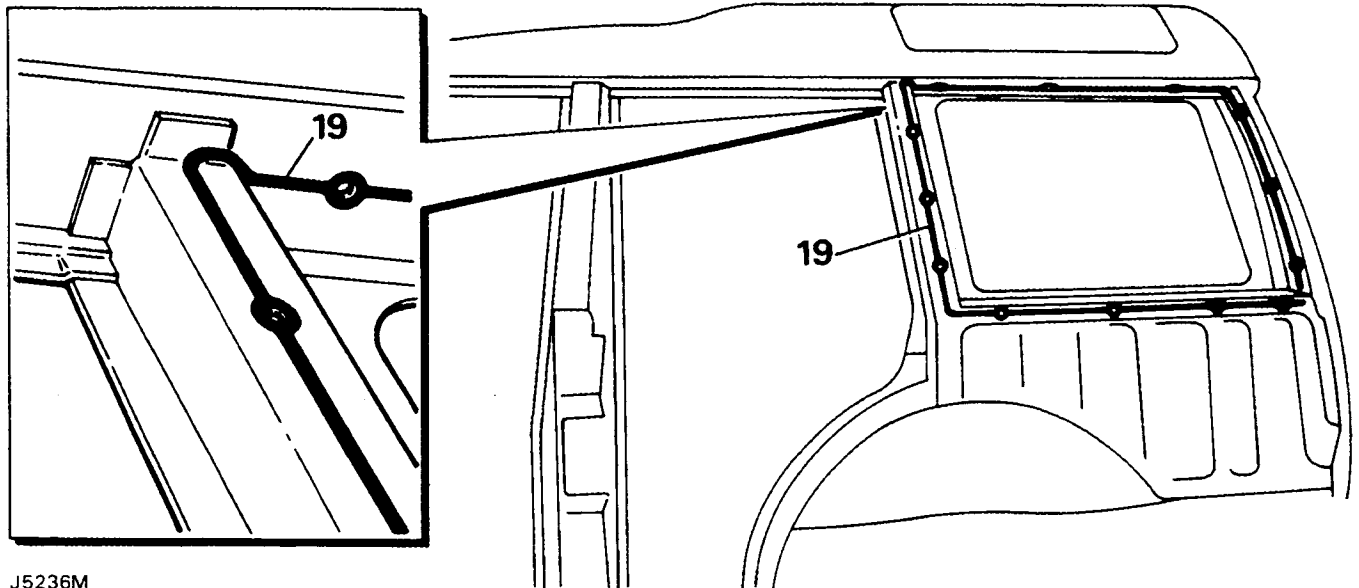
15. Starting from the 'D' post and working towards the rear of the vehicle, ease the panel away from the body to break the seal. When the seal hold has been completely broken, push the panel towards the rear of the vehicle, to disengage the rear quarter panel from the 'E' post, then lift the side and rear quarter panel assembly clear.
16. If the panel being removed is a right hand panel and is being renewed, remove the fuel filler pipe.

Cleaning/painting

17. Thoroughly clean all traces of existing sealant from the mating faces of the body and panel.
18. Paint the cleaned surfaces with etch primer.

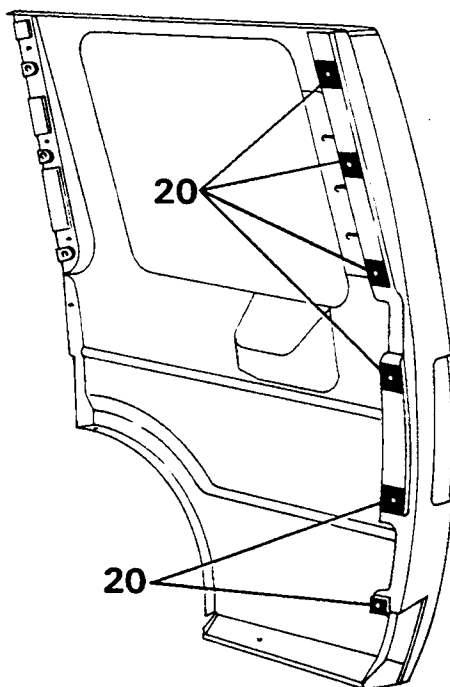
Refitting

19. Apply a 6 mm bead of 3M 8645 Auto Joint and Seam Sealer to the area's of the monocoque illustrated.
20. Apply 20 x 20 mm squares of 3M 8572 Bolted Panel Sealer to the inner faces of the six securing screw holes in the rear quarter panel.



J5236M

21. Locate the panel with the body, ensuring that the sealant is not displaced, and loosely fit the ten bolts securing the panel from inside the body.
22. Loosely fit the countersunk self tapping screws securing the rear quarter panel to the 'E' post and the side panel to the 'D' post.
23. Loosely fit the two bolts, one inside the wheel arch and one at the bottom of the side panel.
24. Starting with the three bolts securing the top of the panel, evenly tighten the bolts to draw the panel upwards to its correct location.
25. Tighten the remaining bolts and the self tapping screws ensuring a satisfactory seal between the mating faces.
26. Clean off any surplus sealant from exposed surfaces.
27. Thumb 3M 8572 Bolted Panel Sealer into all corners of the window aperture to seal any panel mismatches.
28. Apply a bead of 3M 8651 Flexseal to the joint at the lower portion of the 'D' post, tooling the bead to produce a smooth cosmetically acceptable finish.
29. Paint as necessary, referring to the paint manual.
30. Refit the capping to the 'D' post and secure with the nuts and washers.
31. Reverse the removal operations to refit the fuel filler pipe and breather (where applicable), the window, internal trim and rear lamp etc.



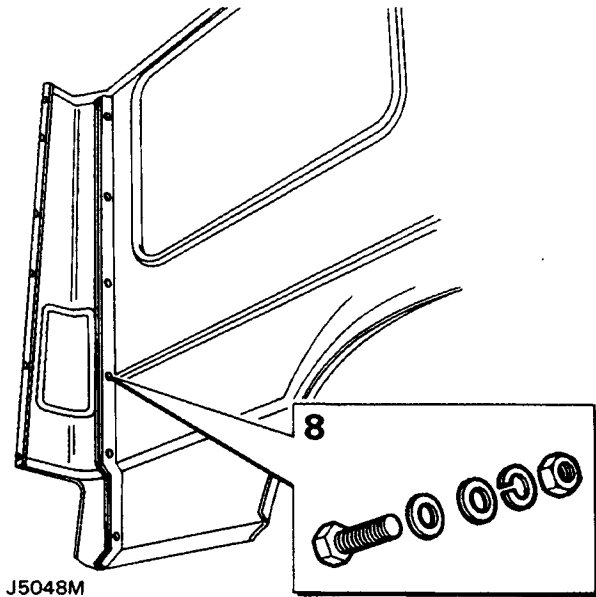
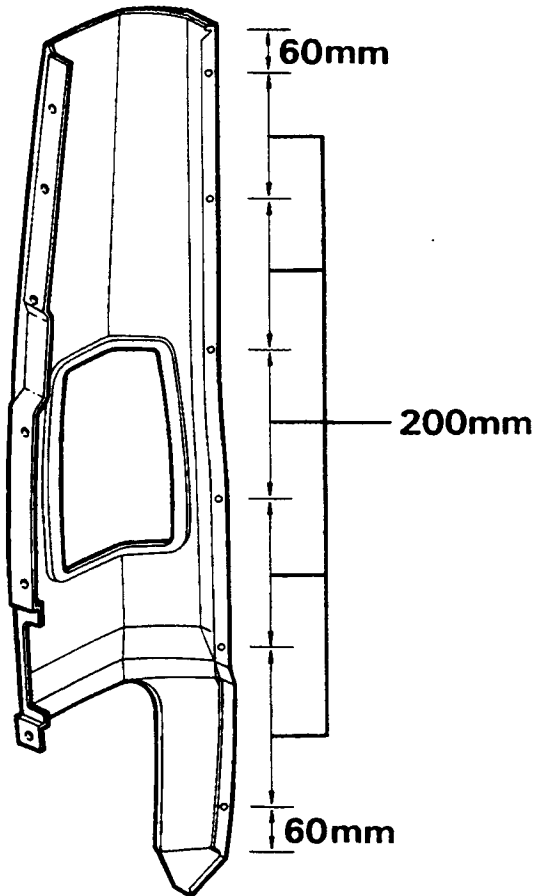
J5237M

Rear quarter panel replacement

1. Remove the body side panel and rear quarter panel assembly from the vehicle.
2. Using a suitable high-speed saw cut off the rear quarter panel at approximately 30 mm from the flange joint.

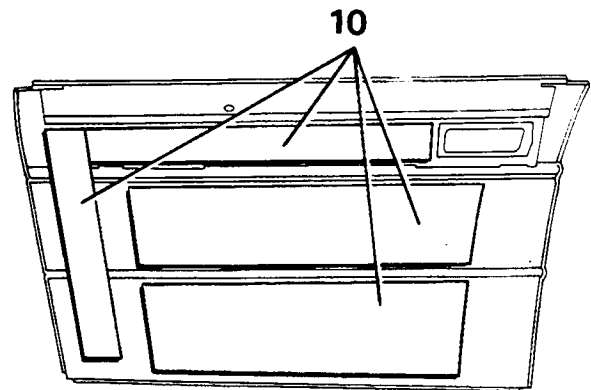
NOTE: The use of an air chisel is not recommended as damage to the body side panel could occur.

3. Remove the flange from the body side panel using a spotweld cutter.
4. On the flange centre line, of the replacement rear quarter panel, set out and drill six 6,5 mm holes in the locations illustrated.
5. Align and clamp the rear quarter panel to the body side panel and transfer the hole locations to the flange on the body side panel.
6. Remove the clamps and drill the six 6,5 mm holes in the locations marked on the body side panel flange.



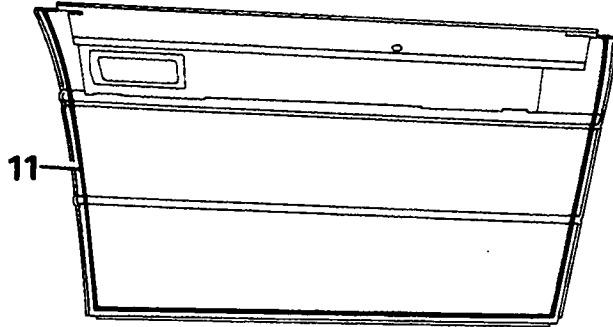
Front door skin replacement

1. Remove the door from the vehicle.
2. Remove the trim panel from the interior of the door.
3. Remove the window lift motor, door lock actuator and door harness, if fitted.
4. Remove the door mirror.
5. Remove the door glass and regulator, the door lock and the inner and outer release handles.
6. Remove the door hinge halves noting the thickness of shims fitted, to assist with refitting.
7. Remove the existing door skin by grinding off the edge of the flange.
8. Clean the door frame and remove all trace of sealant.
9. Prime all bare metal with etch primer.
10. Apply Supra SDP25 self adhesive sound deadening pads to the replacement panel in the positions illustrated.

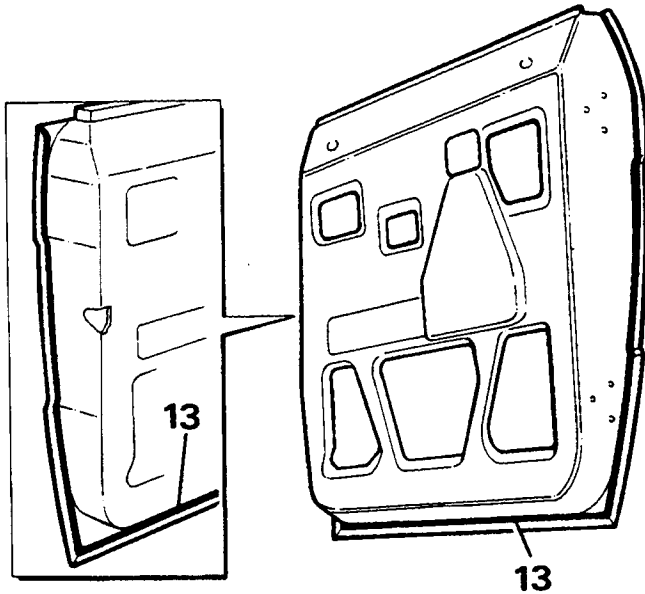


7. Deburr all holes and etch prime all bare metal.
8. Bolt the panels together using M6 X 20 mm plated bolts, nuts plain and spring washers.
9. Refit the panel assembly to the vehicle.
10. Paint as necessary, referring to the paint manual.

11. Apply a 4 mm minimum thickness bead of 3M 8651 Flexseal to the edge of the panel.
12. Fit the skin panel to the door frame and clinch the flange.
13. Apply a bead of Flexseal to the clinched joint, tooling the bead as required to achieve a smooth cosmetically acceptable seal.
14. Refer to the paint manual to paint the door.



J5050M



J5051M

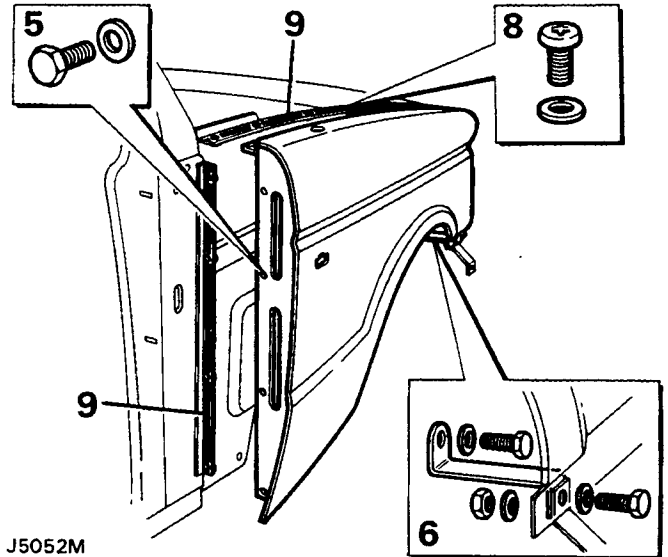
15. Reassemble the components to the door in reverse order of removal.
16. Refit the door to the vehicle adjusting as necessary to achieve a satisfactory fit.

Wings

Removal

1. Disconnect the battery negative lead.

2. Remove the headlamp surround.
3. Remove the front bumper assembly.
4. Remove the indicator repeater light.
5. Remove the four screws securing the wing at the 'A' post.
6. Remove the bolts securing the bottom of the wing at the bumper retaining bracket and at the sill finisher.
7. If removing the RH wing slacken the radio aerial securing nut.



J5052M

8. Remove the seven bolts from the drain channel in the top of the wing.
9. Break the sealed joints at the valance and 'A' post; then complete the removal of the wing. If removing a RH wing withdraw the wing sufficiently to allow removal of the radio aerial before completing the removal.

Cleaning/painting

10. Thoroughly clean all traces of existing sealant from the sealing faces of the valance and 'A' post.
11. Paint the cleaned surfaces with etch primer.
12. If the existing wing is to be refitted repeat the cleaning and painting procedure on the wing sealing surfaces.

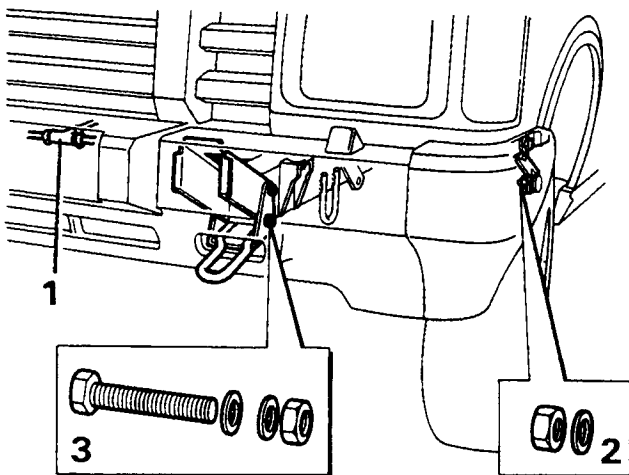
Refitting

13. Apply 3M 8572 Bolted Panel Sealer to the joint faces on the valance and 'A' post and to the bracket face.
14. Refit the wing, on RH wings fit the radio aerial, and secure with the bolts and screws ensuring that the wing aligns correctly with the bonnet.

Front bumper assembly

Removal

1. If fitted, disconnect the headlamp washer hose at the 'T' piece on the front bumper and blank off to prevent loss of fluid.
2. Remove the nuts and washers securing the bumper to the retaining brackets at the bottom of the wings.
3. Remove the two bolts, nuts and washers from each of the chassis mounting brackets and withdraw the bumper assembly complete with the towing eye.



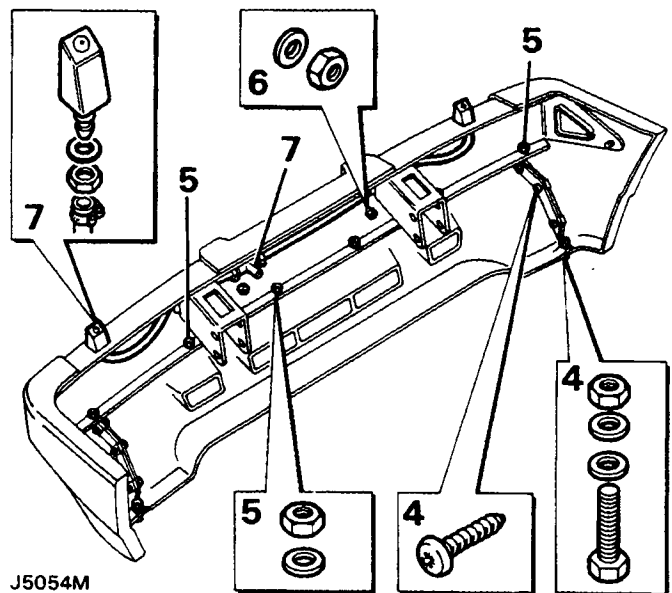
J5053M

Dismantling

4. Remove the nuts, bolts, washers and screws securing the end caps to the bumper and withdraw the end caps.
5. Remove the six nuts and washers securing the bumper halves together.
6. Remove the nuts and washers and withdraw the number plate housing.
7. Where applicable remove the headlamp wash hose, complete with 'T' piece and detach the jets from the bumper.

Reassembly

8. Reassemble the front bumper in reverse order to dismantling.



J5054M

Refitting

9. Refit the front bumper assembly in reverse order to removal.

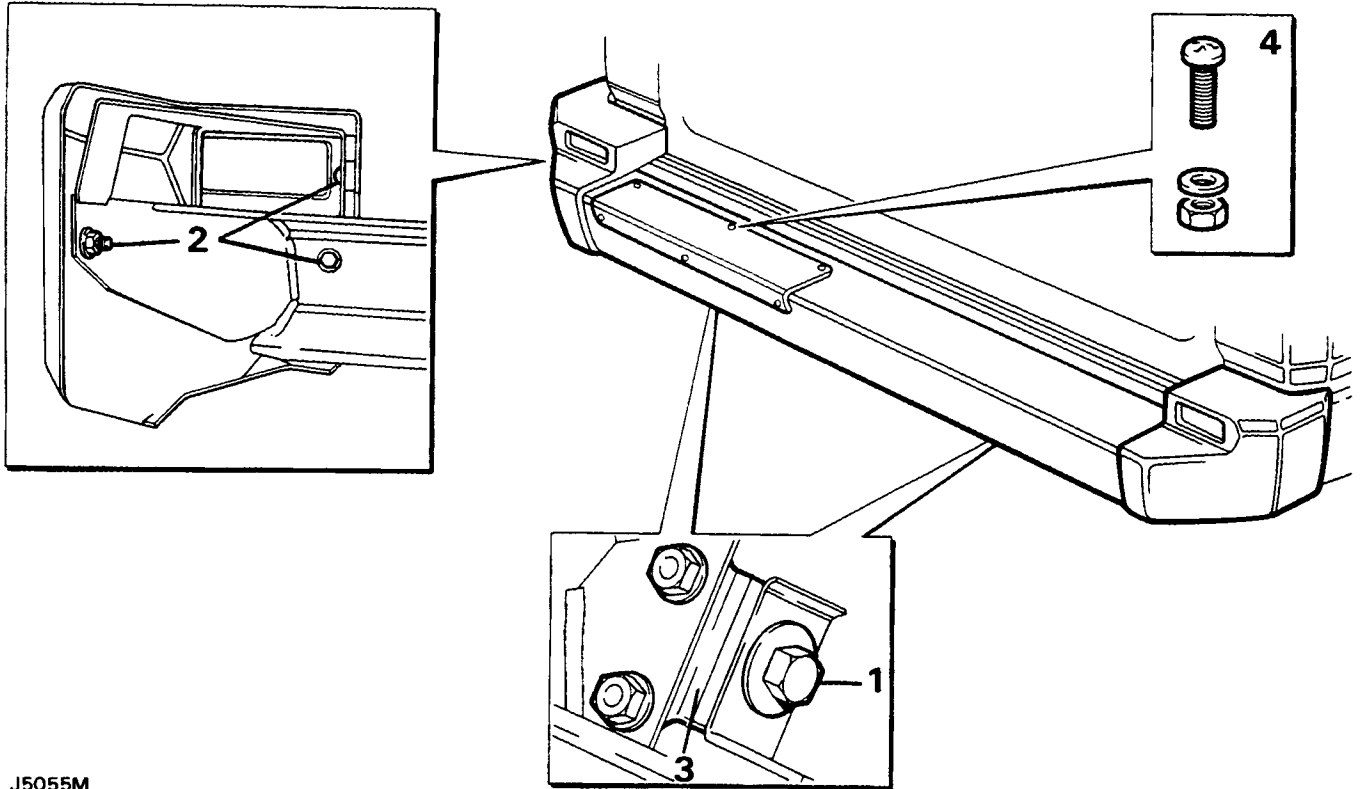
Rear bumper

Removal

1. Remove the two bolts securing the rear bumper to the chassis and withdraw the bumper.
2. To remove the end caps remove the single bolt, screw and the nut and washer and withdraw the end cap.
3. If fitting a new bumper remove the mounting brackets, from the existing bumper, and fit them to the replacement.
4. To replace the rubber tread remove the six screws, nuts and washers and lift the rubber tread off the bumper.
5. To replace the body to bumper finisher, tap out the centres of the retainers, using a suitable punch.

Refitting

6. Refit the rear bumper in reverse order to removal.

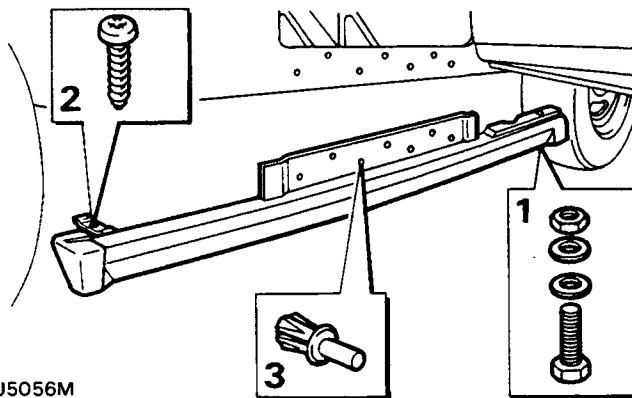


J5055M

Sill finisher

Removal

1. Remove the nut, bolt and washer securing the front of the sill finisher to the wing support bracket.
2. Remove the screw securing the bracket at the rear end of the finisher to the sill.
3. Using a suitable punch, remove the inserts from the seven plastic retainers and withdraw the finisher from the sill.



J5056M

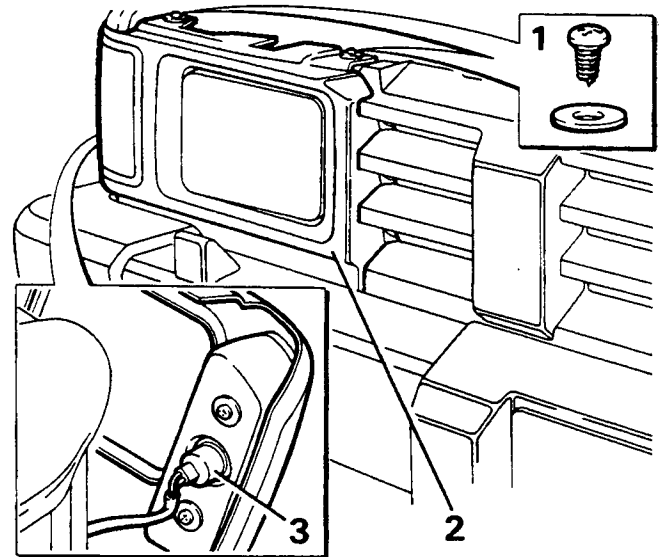
Refitting

4. Refit the sill finisher in reverse order to removal, using new plastic retainers.

Headlamp surround and indicator lamp housing.

Removal

1. Remove the screws securing the top of the surround.



J5059M

2. Ease the surround forward at the same time releasing the side legs from mesh with the radiator grille and lifting to release the bottom retaining pegs.
3. Disconnect the indicator lamp lead at the multi-plug and withdraw the surround from the vehicle.

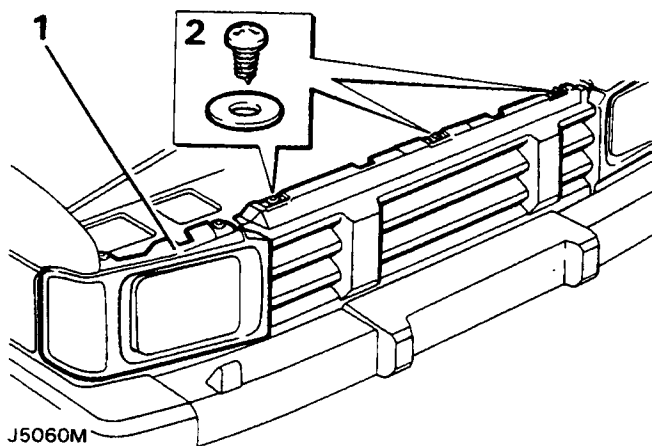
Refitting

4. Refit the headlight surround in reverse order to removal, ensuring correct engagement of the side legs with the radiator grille.

Radiator grille

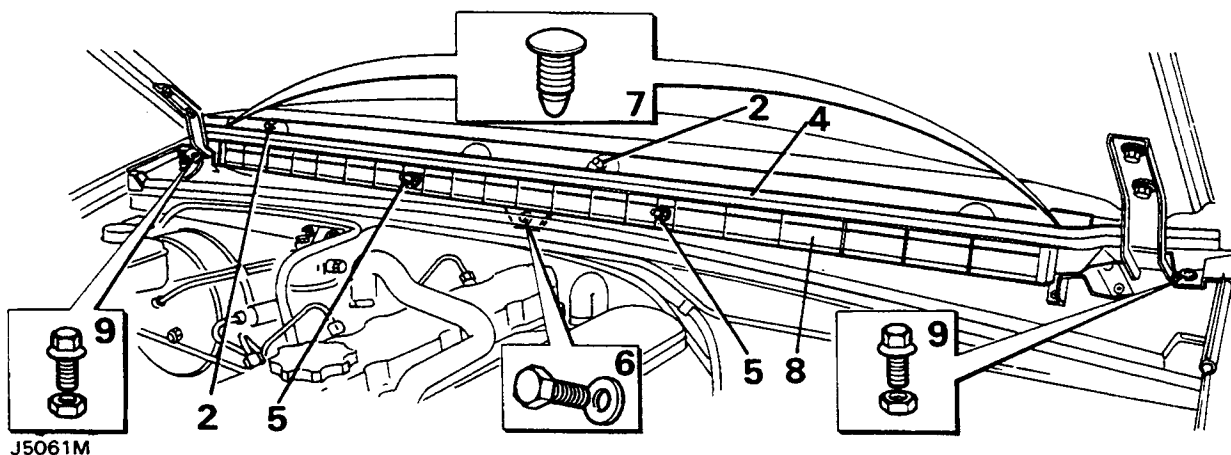
Removal

1. Remove the headlamp surrounds.
2. Remove the top securing screws and lift the radiator grille clear.



Refitting

3. Refit the grille in reverse order to removal.



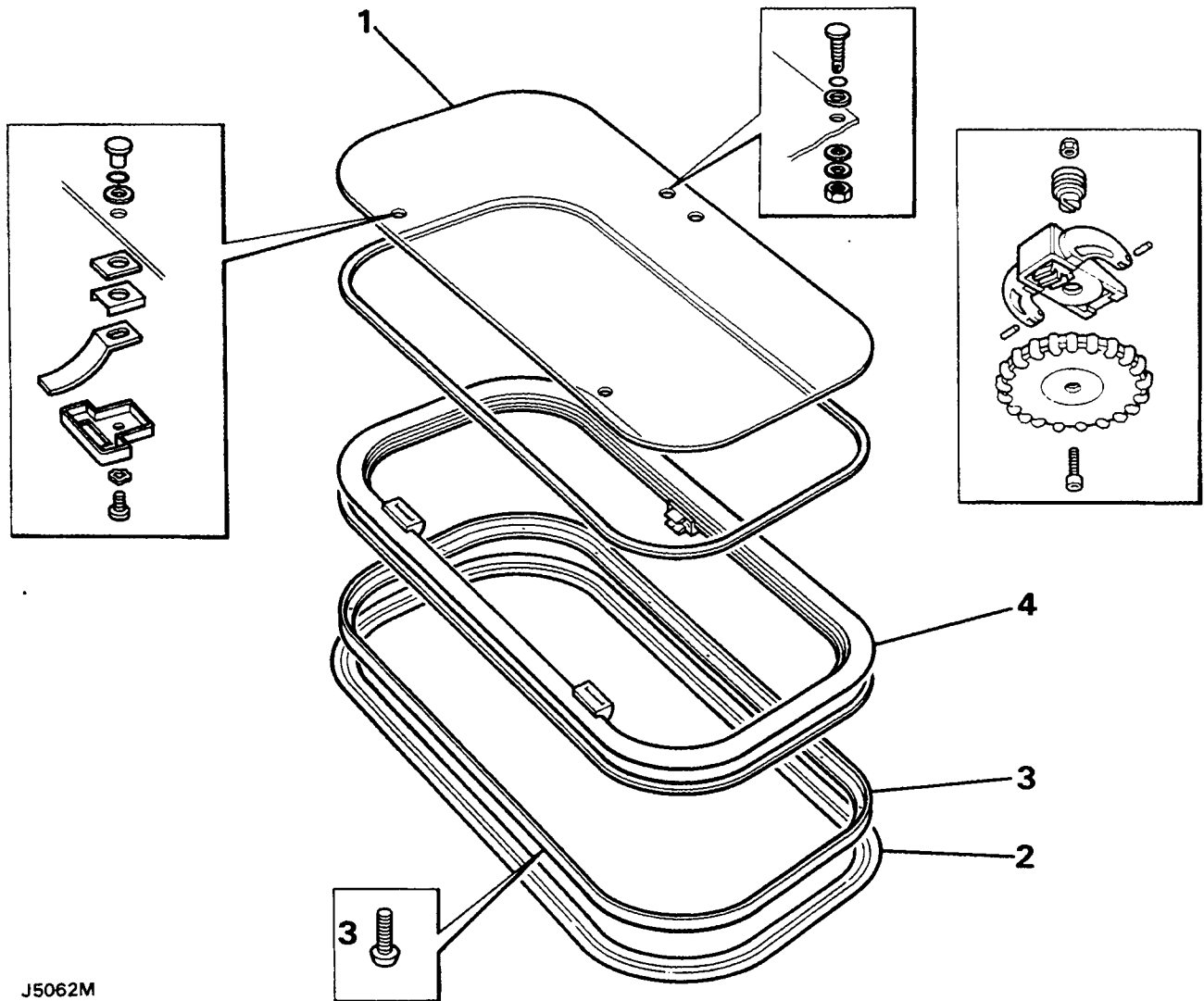
Air intake plenum cowl

Removal

1. Remove the windscreen wiper arms.
2. Remove the securing nuts and the steel and rubber washers from the wiper spindles.
3. Open the vehicle bonnet and support with the stay.
4. Remove the rubber seal from the cowl flange.
5. Release the screen washer tubes from the washer jets on the cowl.
6. Remove the centre bolt securing the cowl centre section.
7. Remove the retainers securing the centre section to the outer section.
8. Detach the centre section from the bulkhead.
9. Remove the nuts and bolts and detach the outer sections of the cowl.

Refitting

10. Refit the air intake plenum cowl in reverse order to removal.



J5062M

SUN ROOF

Removal

1. Open the sun roof and remove the glass panel.
2. Remove the trim finisher from the inner flange.
3. Remove the eighteen screws securing the inner frame to the outer frame and detach the inner frame.
4. Lift the outer frame clear of the roof.

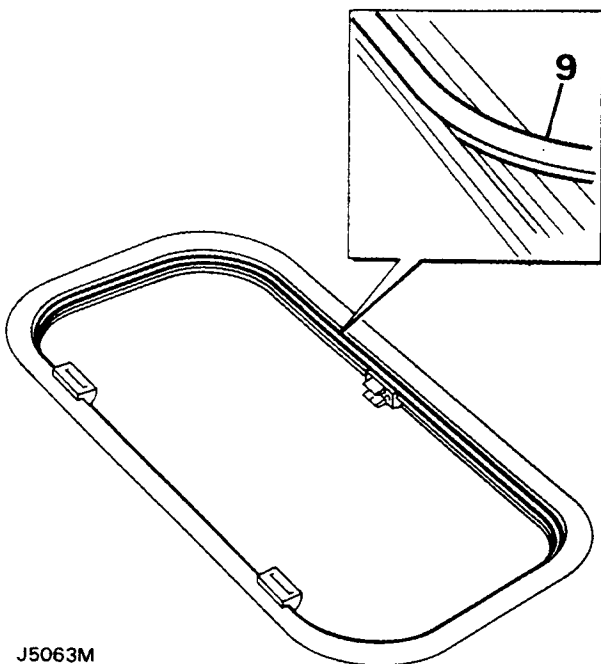
Refitting

5. Remove the existing outer flange foam sealant tape and clean the flange and roof sealing area's.
6. Fit new foam sealant tape to the underside of the flange. The joint line must be at the centre point of the rear of the roof with the ends overlapping by approximately 0.250 in.

7. Locate the outer frame to the roof, fit the inner frame and secure to the outer frame with the eighteen screws, ensuring that the frames are centrally located in the roof aperture.

Seal replacement

8. Remove the sunroof glass panel.
9. Using suitable long nosed pliers and working from the corners remove the existing seal from its location in the outer frame.
10. Ensure that the seal location in the frame is completely dry.
11. Inspect the rivet heads which pass through the male hinge rivets. Clear silicone sealant should be present on the rivet heads, if not evident apply a small quantity of silicone sealant to the heads.
12. Fit the new seal starting at the corners and working inwards, inserting the bottom leg of the seal into the frame slot.



NOTE: When fitting the seal ensure that the vulcanised joint in the seal is situated in the centre of the rear channel, adjacent to the operating knob.

13. With the bottom leg of the seal fully inserted into the frame, use a flat, blunt, rounded wooden or plastic spatula type tool, and insert the top leg of the seal into the 'V' slot of the frame.
14. Hold back the top flip of the seal and check that the seal is fully inserted into the frame.
15. Wipe the seal clean, ensuring that swarf or dirt is not present.
16. Refit the glass panel.

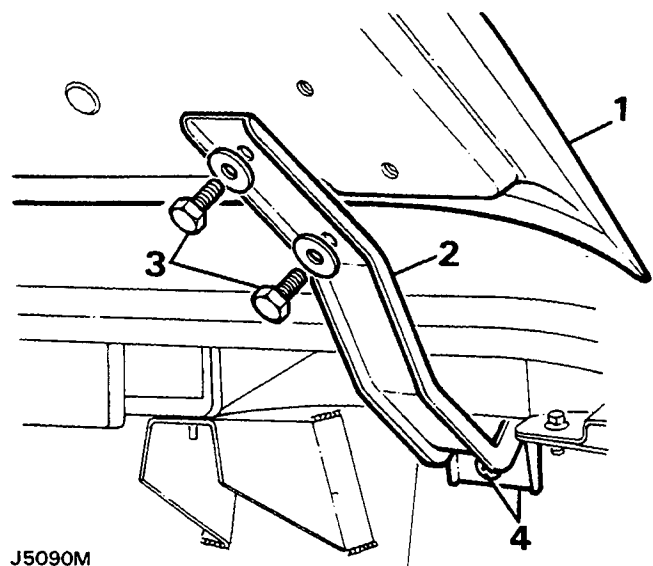
BONNET

Removal

1. Open the bonnet and support with the stay.
2. Mark the position of the hinges to the bonnet.
3. With the assistance of a second operator, remove the hinge to bonnet securing screws, remove the support stay and lift the bonnet from the vehicle. Note the quantity of shims fitted between the hinge and bonnet.

Refitting

4. Refit the bonnet in reverse order to removal, ensuring that it aligns with the wings, cowl panel and front grille before fully tightening the securing bolts.



BONNET HINGES

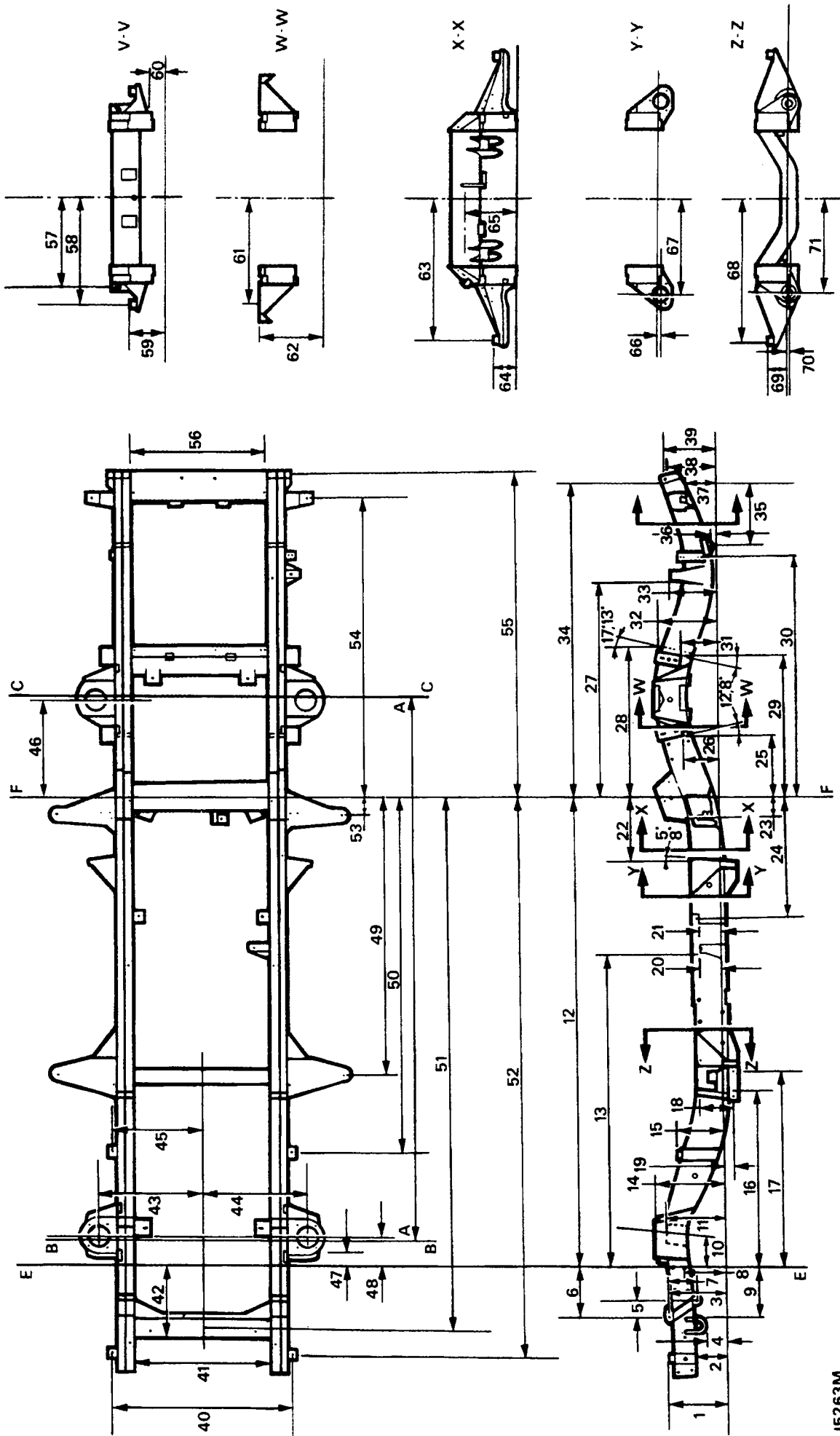
Removal

1. Remove the bonnet.
2. Remove the outer plenum cowl sections.
3. Mark the position of the hinges to the bulkhead.
4. Remove the bolts and detach the hinge.

Refitting

5. Paint the bulkhead and hinge mating faces with suitable etch primer.
6. Refit the bonnet hinges in reverse order to removal.

This page intentionally left blank



Chassis dimensions, vehicles fitted with EFI petrol engines

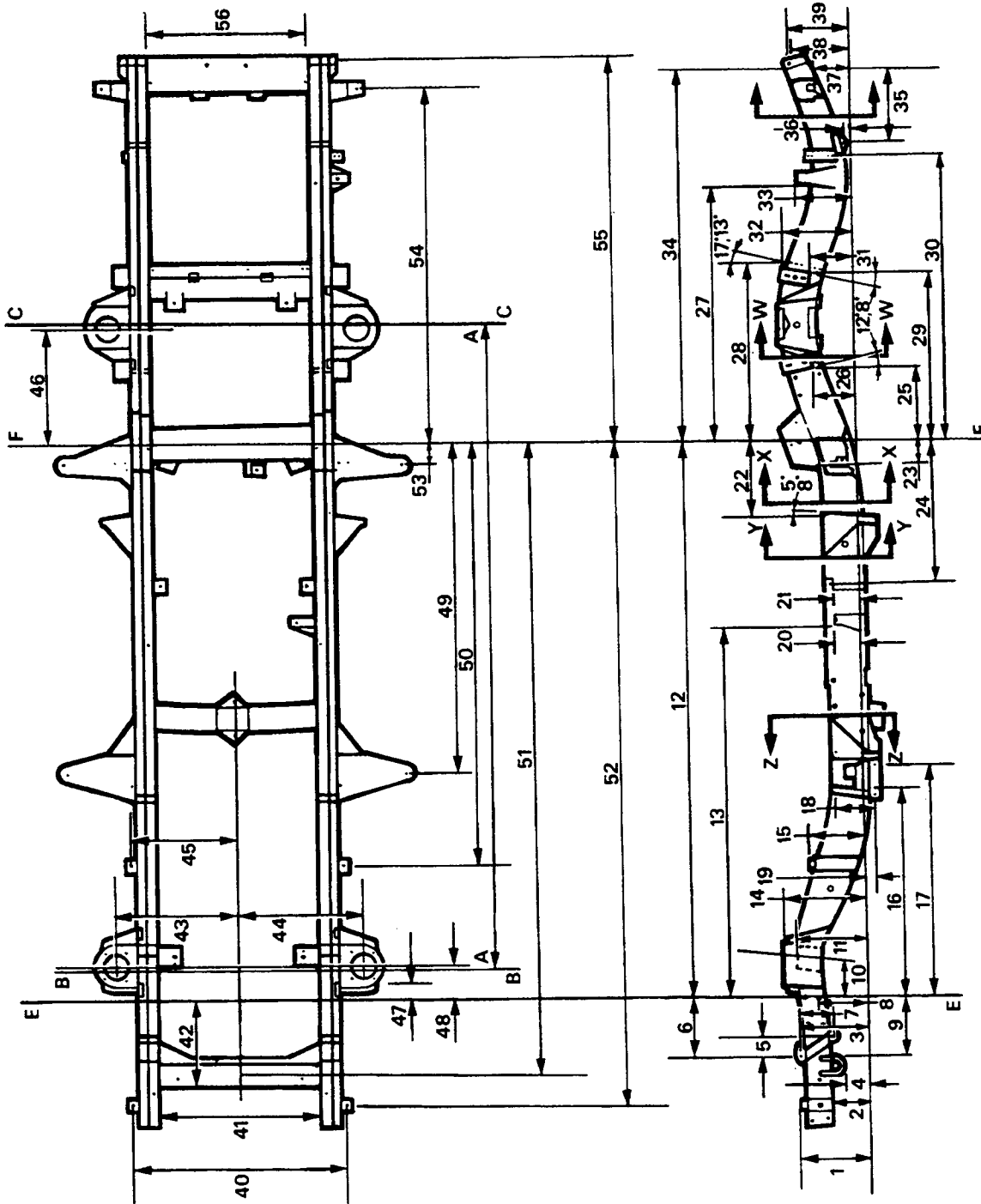
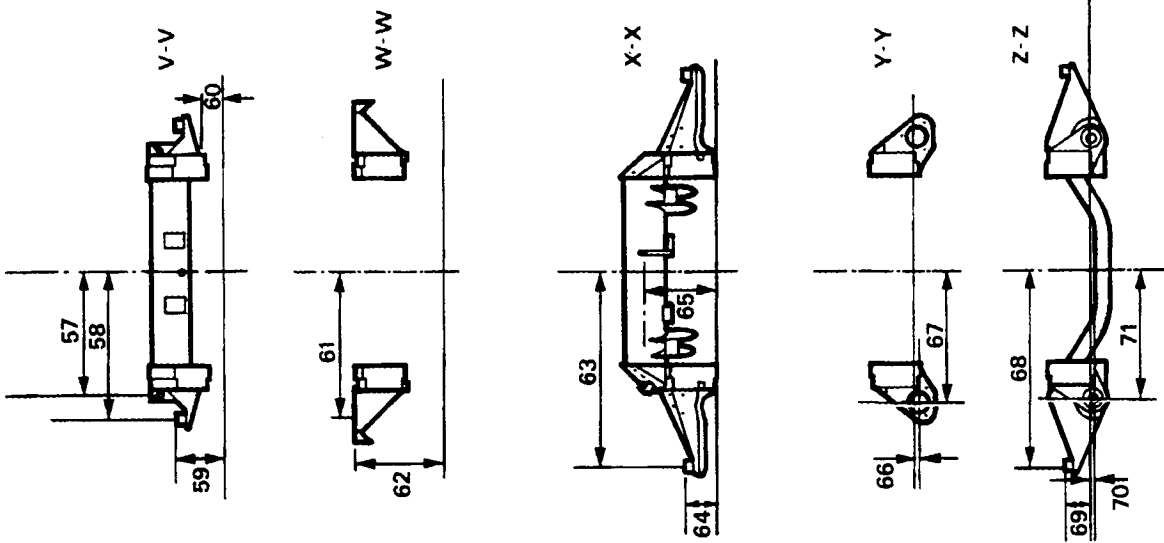
J5263M

CHASSIS FRAME

Chassis dimensions, vehicles fitted with EFI petrol engines

Diagram reference	Millimeters
AA Wheelbase reference dimension	2540.00
BB Centre line of front axle	
CC Centre line of rear axle	
DD Frame datum line	
EE Side member datum line	
FF Datum line	

Reference	Millimeters	Reference	Millimeters
1	264,16 ± 1,27	37	144,00 ± 1,30
2 Reference	150,80	38	222,25 ± 2,54
3	266,70 ± 2,54	39	240,03 ± 2,54
4	95,25 ± 5,08	40	838,20 ± 0,50
5	80,54 ± 1,27	41	630,94 ± 1,27
6	237,74 ± 1,27	42	344,17 ± 1,27
7	123,87 ± 1,27	43	485,77 ± 2,54
8 Reference	189,40	44	485,77 ± 2,54
9	235,71 ± 0,64	45	414,33 ± 0,25
10	163,50 ± 2,54	46	465,18 ± 2,84
11	255,20 ± 2,54	47	59,06 ± 2,54
12	2179,72 ± 2,54	48	129,03 ± 2,54
13	1463,50 ± 2,54	49	1290,34 ± 0,75
14	327,81 ± 2,54	50	1657,04 ± 0,75
15	225,96 ± 1,27	51	2479,44 ± 0,25
16 Reference	824,92	52	2598,44 ± 0,75
17	935,43 ± 2,54	53	79,09 ± 0,75
18	155,57 ± 1,27	54	1398,88 ± 0,75
19 Reference	34,92	55	1519,15 ± 2,54
20	107,95 ± 2,54	56 Reference	635,00
21	111,13 ± 2,54	57	495,30 ± 0,25
22	291,74 ± 2,54	58	412,75 ± 1,27
23	97,82 ± 2,54	59	149,91 ± 1,27
24	553,31 ± 2,54	60	90,53 ± 2,54
25	295,23 ± 2,54	61	488,95 ± 2,54
26	173,46 ± 2,54	62	295,28 ± 2,54
27	1025,18 ± 2,54	63	660,40 ± 0,25
28	707,96 ± 2,54	64	80,39 ± 1,27
29	666,63 ± 2,54	65	218,79 ± 2,54
30	1133,38 ± 2,54	66	14,48 ± 2,54
31	173,46 ± 2,54	67	445,77 ± 2,54
32	256,03 ± 2,54	68	660,40 ± 0,25
33	214,00 ± 2,54	69	80,39 ± 1,27
34	1468,49 ± 2,54	70	9,53 ± 2,54
35	338,84 ± 2,54	71	438,15 ± 2,54
36	31,75 ± 5,08		



Chassis dimensions, vehicles fitted with Tdi engines

J5262M

CHASSIS FRAME

Chassis dimensions, vehicles fitted with Tdi engines

Diagram reference	Millimeters
AA Wheelbase reference dimension	2540.00
BB Centre line of front axle	
CC Centre line of rear axle	
DD Frame datum line	
EE Side member datum line	
FF Datum line	

Reference	Millimeters	Reference	Millimeters
1	264,16 ± 1,27	37	144,00 ± 1,30
2 Reference	150,80	38	222,25 ± 2,54
3	266,70 ± 2,54	39	240,03 ± 2,54
4	95,25 ± 5,08	40	838,20 ± 0,50
5	80,54 ± 1,27	41	630,94 ± 1,27
6	237,74 ± 1,27	42	344,17 ± 1,27
7	123,87 ± 1,27	43	485,77 ± 2,54
8 Reference	189,40	44	485,77 ± 2,54
9	235,71 ± 0,64	45	414,33 ± 0,25
10	163,50 ± 2,54	46	465,18 ± 2,84
11	255,20 ± 2,54	47	59,06 ± 2,54
12	2179,72 ± 2,54	48	129,03 ± 2,54
13	1463,50 ± 2,54	49	1290,34 ± 0,75
14	327,81 ± 2,54	50	1657,04 ± 0,75
15	225,96 ± 1,27	51	2479,44 ± 0,25
16 Reference	824,92	52	2598,44 ± 0,75
17	935,43 ± 2,54	53	79,09 ± 0,75
18	155,57 ± 1,27	54	1398,88 ± 0,75
19 Reference	34,92	55	1519,15 ± 2,54
20	107,95 ± 2,54	56 Reference	635,00
21	111,13 ± 2,54	57	495,30 ± 0,25
22	291,74 ± 2,54	58	412,75 ± 1,27
23	97,82 ± 2,54	59	149,91 ± 1,27
24	553,31 ± 2,54	60	90,53 ± 2,54
25	295,23 ± 2,54	61	488,95 ± 2,54
26	173,46 ± 2,54	62	295,28 ±
27	1025,18 ± 2,54	63	660,40 ±
28	707,96 ± 2,54	64	80,39 ±
29	666,63 ± 2,54	65	218,79 ±
30	1133,38 ± 2,54	66	14,48 ±
31	173,46 ± 2,54	67	445,77 ±
32	256,03 ± 2,54	68	660,40 ±
33	214,00 ± 2,54	69	80,39 ±
34	1468,49 ± 2,54	70	9,53 ±
35	338,84 ± 2,54	71	438,15 ±
36	31,75 ± 5,08		