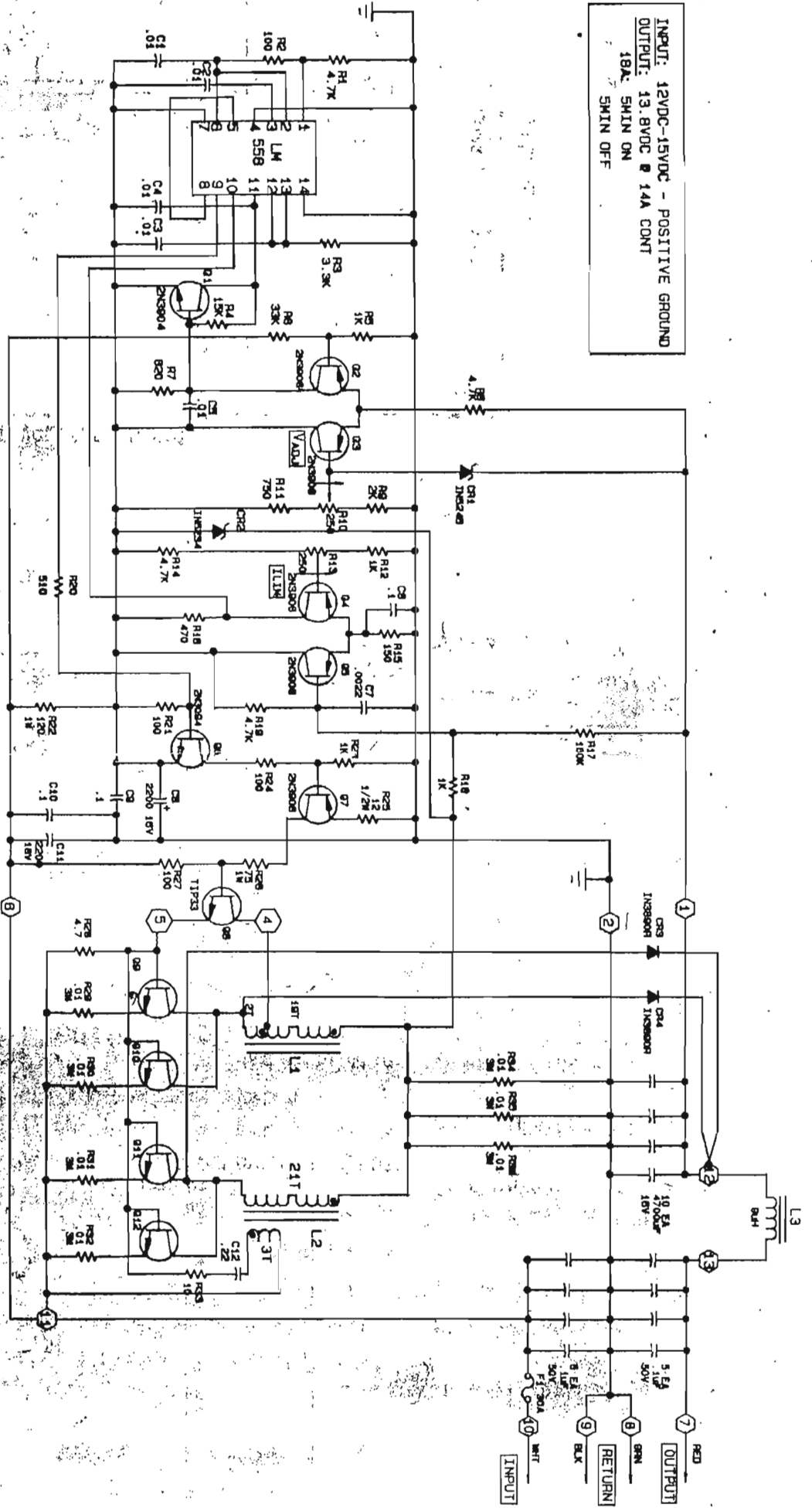


INPUT: 12VDC-15VDC - POSITIVE GROUND
 OUTPUT: 13.8VDC @ 14A CONT
 18A. SM IN ON
 18A. SM IN OFF



- UNLESS OTHERWISE NOTED.
1. ALL RESISTORS ARE IN OHMS.
 2. ALL CAPACITORS ARE IN MICROFARADS.
 3. ○ PRINTED CIRCUIT BOARD.

ASTRON CORPORATION
 IRVINE CALIFORNIA

DATE: 8/1/67 APPROVED: *[Signature]*

1212-1B

INSTRUCTION SHEET

MODEL 1212-18 CONVERTER

This converter has been designed for use in trucks and other vehicles having abnormal polarity. Positive battery terminal grounded.

The converter will reverse the polarity to a normal negative ground system.

The input voltage is 12 VDC + GRD only (functional between 11 to 16 VDC + GRD).

The chassis ground is common to both input and output.

The output voltage is 13.8 VDC regulated from zero to full load within $\pm 200\text{mV}$.

The unit will deliver 14 amp continuous 18 amp ICS. If overloaded, the input fuse (in-line) will blow. NEVER USE AN OVERSIZED FUSE.

The regulator is a 20KHz PWM (Pulse width modulation) current limited (12 amp) overvoltage protected (15 VDC maximum) system.

This converter features excellent line/load regulation typically 100 mV and very low output ripple, typically 50 mV.

INSTALLATION:

CAUTION

