

BM100/4 BM101/4

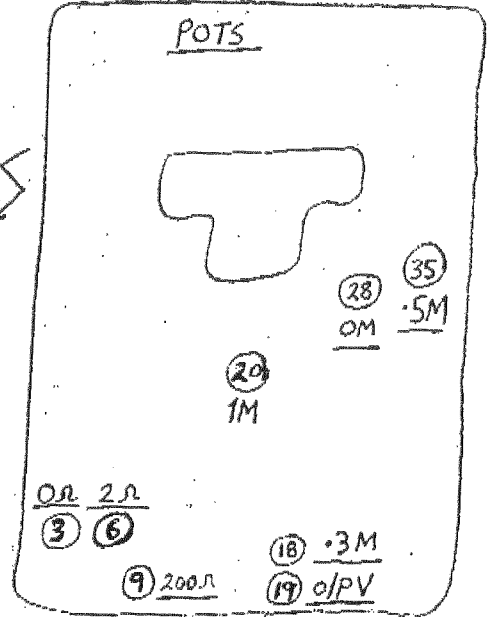
FAO GEORGE V ESMET

CALIBRATION

Recommend using dedicated rear case for pot access. **CARE - HIGH VOLTAGE**

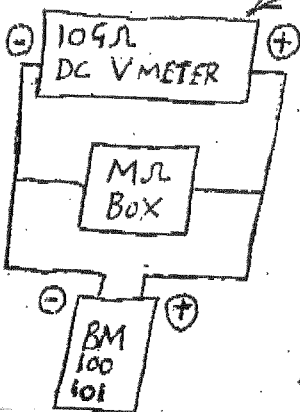
Antistat window → Pointer adjustments.
∞ adjustment → Balance ± 2mm.

AC VOLTMETER SCALE No adjustment.
± 15V at 300V & 600V_{AC} (BM100 ONLY)



200 MΩ

HIGH IMPEDANCE



- A R19 508 to 510V AT 0.5M OR AS CLOSE AS POSS
- B R35 0.5M ± 1mm
- C R28 0MΩ
- D R18 0.3M ± 1mm

REPEAT/RECHECK ABCD until all in spec.

< 570V o/p AT 100M ± 1mm.

± 1mm AT 5M, 1M.

FOR o/c TERMINALS ∞ SPOT ON.

1.35 to 1.85 mA DC S/C CURRENT.

1 MΩ (BM101/4 ONLY)

R20 1M, 0.05M, 0.1M ± 1.4 mm
0M SPOT ON

200Ω

R9 so that 100Ω, 200Ω, 50Ω, 20Ω ± 1.2 mm.
0Ω can be on edge of marking

2Ω

R3 so that 0Ω in middle of zero band
R6 so that 2Ω 1Ω 0.5Ω are ± 1.2 mm
s/c current 210 ± 5 mA.

} USE CUSTOMER TEST LEADS, BOTH CONNECTED TO KNOWN GOOD S/C FOR 0Ω TEST.