

Megger[®]

**Download
Manager**

Copyright © 2003 Megger Limited

Version 1.0

User's Guide

Megger Download Manager License Agreement

License Agreement (Single-User Products)

This is a legal agreement between you (either an individual or an entity) and Megger Limited. By opening the sealed software packet you are agreeing to be bound by the terms of this agreement. If you do not agree with the terms of this agreement, promptly return the unopened software packet(s) and the accompanying items (including written materials and binders or other containers) to the place you obtained them for a full refund.

SOFTWARE LICENSE

1. GRANT OF LICENSE. Megger Limited grants you to the right to use one copy of the enclosed Download Manager software program (the "software") on a single computer. The software is in "use" on a computer when it is loaded into temporary memory (i.e. RAM) or installed into permanent memory (eg. hard disk, or any other device).

2. COPYRIGHT. The software is owned by Megger Limited or its suppliers and is protected by copyright laws. Therefore you must treat the software like any other copyrighted material (eg. a book or musical recording) **except** that you may either (a) make one copy of the software solely for backup or archival purposes, or (b) transfer the software to a single hard disk provided you keep the original solely for archival purposes. You may not copy the written materials accompanying the software.

3. OTHER RESTRICTIONS. You may not rent or lease the software, but you may transfer the software and the accompanying written materials on a permanent basis provided you retain no copies and the recipient agrees to the terms of this agreement. You may not reverse engineer, decompile or disassemble the software. If the software is an update or has been updated, any transfer must include the most recent update and all prior versions.

USE ON ONE COMPUTER ONLY. The purchase of a license for the software allows it to be installed into the permanent memory of only one computer at a time.

LIMITED WARRANTY

LIMITED WARRANTY. Megger Limited warrants that (a) the software will perform substantially in accordance with the accompanying written materials for a period of one year from the date of receipt.

CUSTOMER REMEDIES. Megger Limited's entire liability and your exclusive remedy shall be at Megger Limited's option, repair or replacement of the software will only take place if the complete package is returned to Megger Limited with a copy of the receipt. This limited warranty is void if failure of the software has resulted from accident, abuse, or misapplication. Any replacement software will be warranted for the remainder of the original warranty period.

NO LIABILITY FOR CONSEQUENTIAL DAMAGES. In no event shall Megger Limited be liable for any damages whatsoever (including, without limitation, damages for loss of business profits, business interruption, loss of business information, or any other pecuniary loss) arising out of the use or inability to use this Megger Limited product, even if Megger Limited has been advised of the possibility of such damages.

REGISTRATION. Within seven days of opening this package, you are to register the software giving full details of your name and address. By registering you acknowledge that you have read this agreement, understand and agree to be bound by its terms and conditions without exception, deletion or alteration. You also agree that this agreement sets out in full the agreement between you and Megger Limited which supersedes any proposal or prior agreement, oral or written, and any other communication between you and Megger Limited relating to the subject matter of this agreement.

INDEMNITY. You agree to indemnify Megger Limited against any loss, damage or expense arising out of or in connection with the reproduction, sale and unauthorised use by you of the software including any loss, damage or expense arising out of the subsequent use of the software by any other person.

GOVERNING LAW. This agreement will be governed by the laws of England.

Megger Technical Services Software Support: **T** +44 (0)1638 515 073. **F** +44 (0)1638 515 060.
E mts@megger.com

Table Of Contents

Technical Support

Introduction

- Product Features
- System Requirements

Installation

Getting Started

- Startup Shell
- Installing Instrument Drivers
- Driver Properties
- Removing Instrument Drivers
- Download Manager Interface
- File Types

Downloading and Uploading

- Downloading and Uploading Concepts
- Downloading
- The Data Folder
 - Types of Download
- Uploading

Uninstalling

Appendix A - Troubleshooting

- Download Manager FAQ

Megger Download Manager
Technical Support

Technical Support

Download Manager technical support is available in the following ways:

T +44 (0)1638 515 073
F +44 (0)1638 515 060
E mts@megger.com
www.megger.com

Megger Technical Services Software Support: **T** +44 (0)1638 515 073. **F** +44 (0)1638 515 060.
E mts@megger.com

Introduction

The Megger Download Manager is a 32bit Microsoft Windows™ application which controls communications and data transfer from supported test instruments using test instrument drivers. The test instrument drivers may be installed from CD or drivers may be supplied with particular test instruments. All the latest instrument drivers are available from the <http://www.megger.com> web site.

The Download Manager receives(downloads) data from instruments and sends(uploads) data to instruments where applicable. The downloaded data will be stored in comma separated format files which can be viewed and edited with the free CSV Viewer program.

Product Features

- Single step downloading of data from test instruments into comma separated file format.
- Files and folders are easily managed using standard Windows™ interface.
- PowerSuite compatible download option from supported appliance and installation test instruments.
- Uploading of data and language files to supported test instruments.
- Powerful free CSV Viewer program included to view, sort, edit, graph and print downloaded data.
- Compact driver files for quick and easy disk and internet updates.

System Requirements

- PC with pentium-class processor (Pentium 133Mhz minimum, Pentium 233Mhz recommended).
- Microsoft Windows™ 95 or later operating system or Microsoft Windows™ NT operating system version 4.0 with Service Pack 3 or later.
- Minimum 32MB of RAM for Windows™ 95 or later (64MB recommended); Minimum 32MB for Windows™ NT 4.0 (64MB recommended)
- 100MB of free hard disk space recommended for a typical installation.
- CD-ROM drive.
- VGA or higher-resolution monitor; Super VGA recommended.
- Microsoft Mouse or compatible pointing device.
- One free RS232 serial port.

Megger Download Manager Installation

Installation

CD Installation

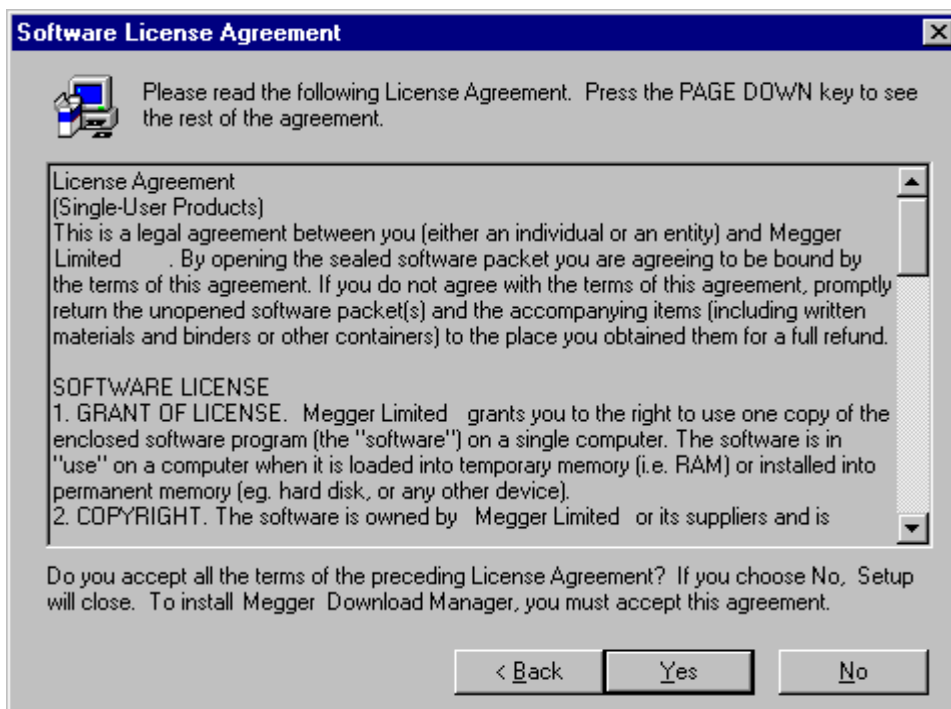
If the CD does not auto run then you will have to point Windows™ to the CD-Rom drive and run the **Setup.exe** program. You will have a chance to select the language you wish to use for the installation by selecting one from the drop down list.



The following welcome screen will be displayed and when you have read all of the information click the next button to continue.

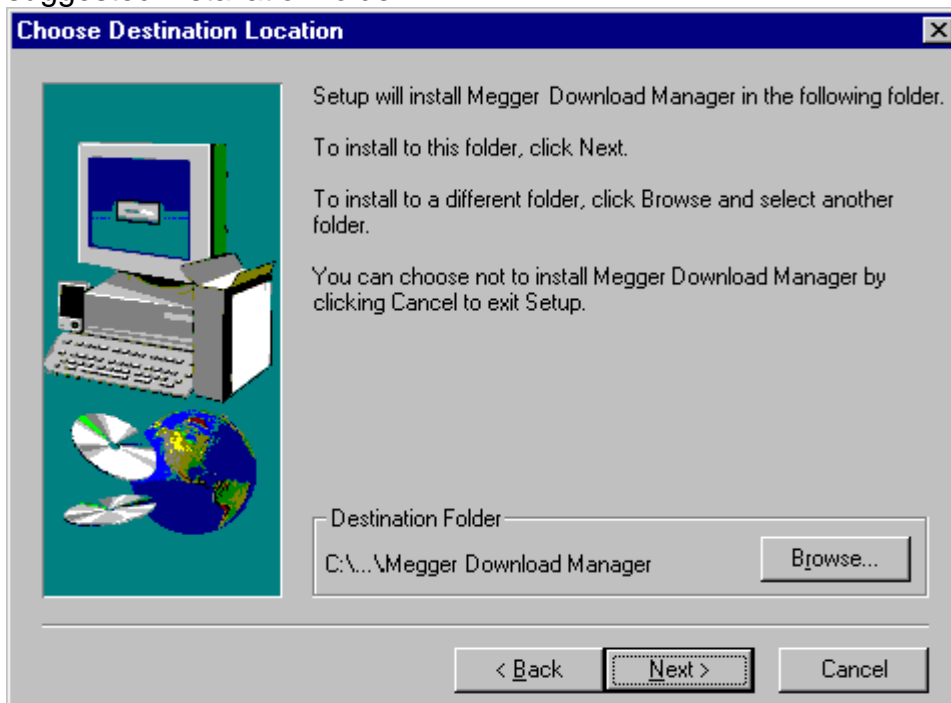


A screen will be displayed showing the current software license agreement. It is important that you read and understand all of the information shown on this screen and the subsequent screens by pressing the page down key.



Click the Yes button to accept the license agreement and continue with the installation.

Unless you have a good reason to change it, we suggest you do not change the suggested installation folder.



If you changed the destination folder when you installed the software and you are upgrading from a previous version or reinstalling, you must set the destination folder correctly to ensure the programs and files are updated. Click the next

button once you have selected the required folder.

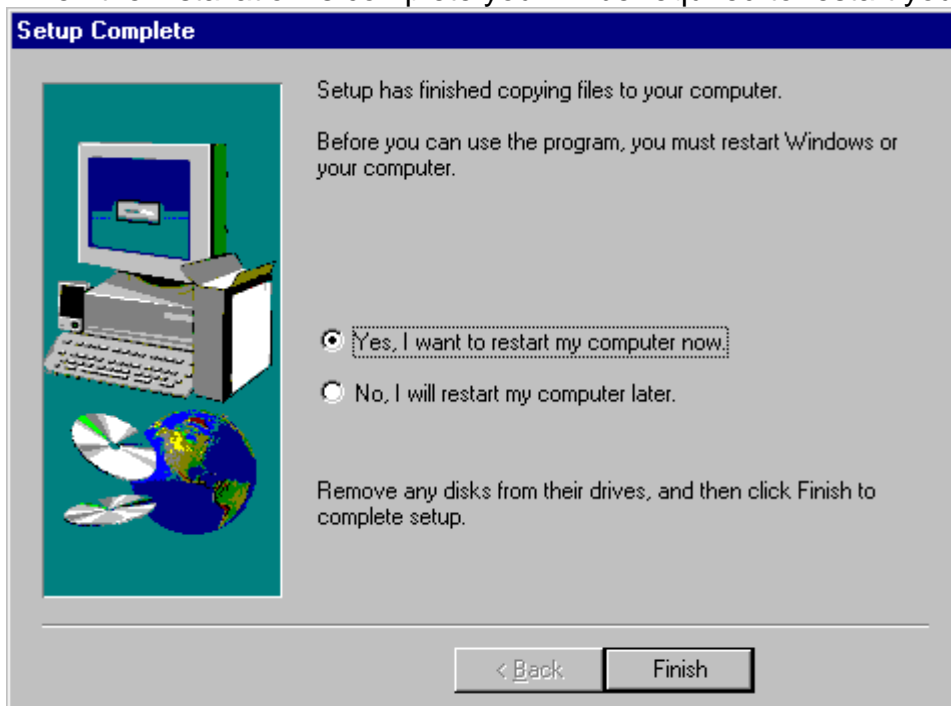
Unless you have a good reason to change it, we suggest you do not change the suggested program icons folder. This folder will be shown as a sub menu from

the the Windows™ Start Menu ,  Programs folder.



Click the Next button to install the Megger Download Manager software.

When the installation is complete you will be required to restart your computer.



N.B. It is very important that your machine is restarted at this time as the Setup program may need to update some of the system files which were in use when the installation program was running.

Megger Technical Services Software Support: **T** +44 (0)1638 515 073. **F** +44 (0)1638 515 060.
E mts@megger.com

Getting Started

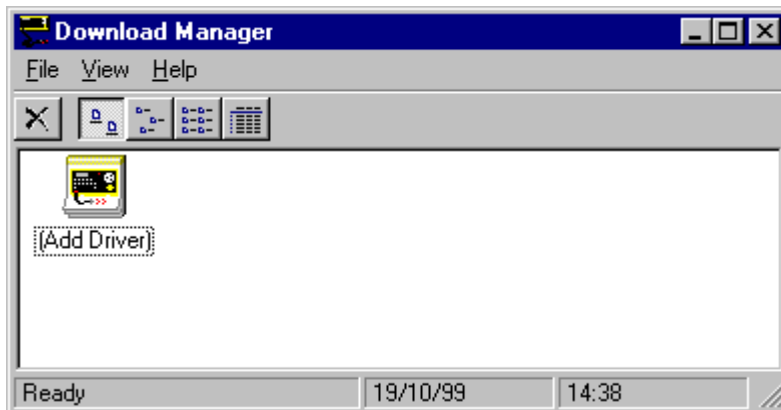
Starting Download Manager

To start Megger Download Manager:

1. From the windows Start menu , select **Programs|Megger Download Manager|Megger Download Manager**.

Startup Shell

All the main features of Download Manager can be accessed from the following window.



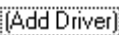
From the view menu, the toolbar and status bar can be switched on and off as required. Large Icons are used as default way of displaying drivers which have been installed but there are also Small Icon, List and Detail views available. The details view is particularly useful as it reports on the number and type of all downloads which have been performed and also displays version number information for the installed drivers. (The **F5** key can be used to refresh the details screen at any time).

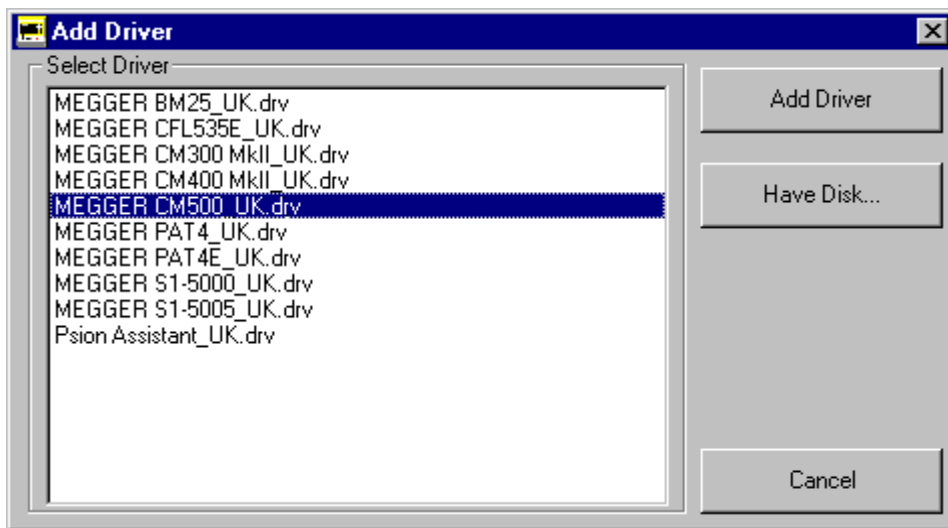
To exit the Megger Download Manager either click on the small cross in the top right hand corner of the window or select **File|Close**.

Installing Instrument Drivers

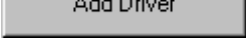
The Download Manager window will be empty when it is first installed and test



instrument drivers can be easily added by either double clicking the  add driver icon or highlighting it and selecting **File|Open** from the menu. The following screen will list the available driver files installed from the Download Manager CD.



Select the required instrument driver by double clicking on it or highlighting it and

clicking the  Add Driver button.

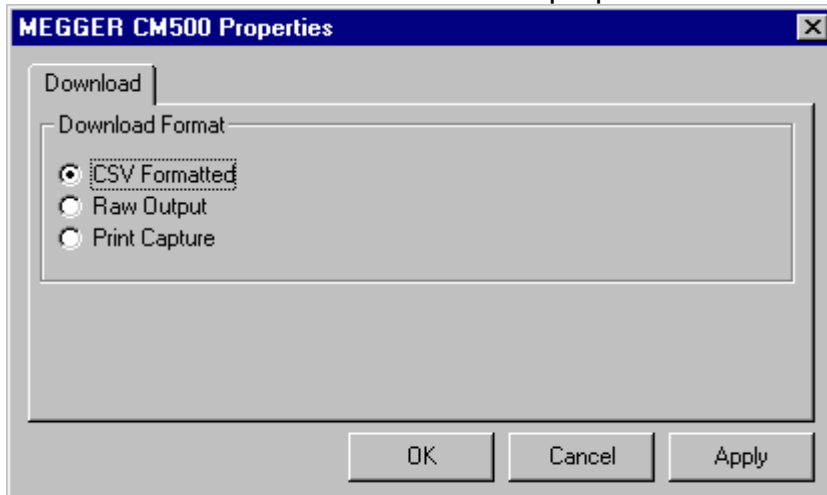
If you have a driver on a diskette or it is elsewhere on your computer, use the

 Have Disk... button to locate it.

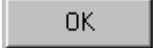
N.B. Updating an existing driver will not erase any previously downloaded data.


Driver Properties

When the driver has been installed its properties screen will be displayed.

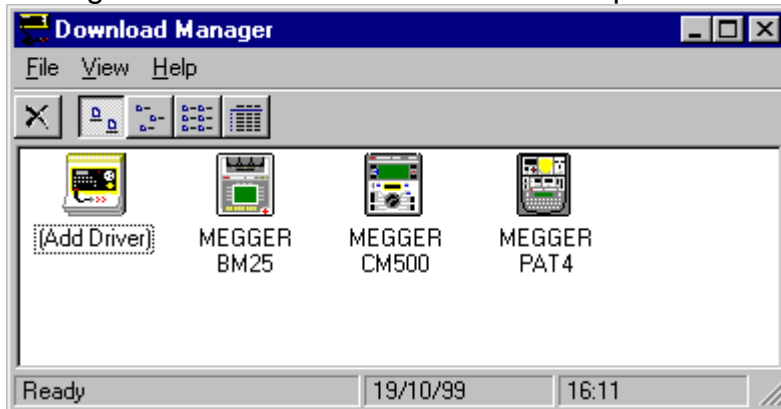


The properties screen will be unique for each type of instrument and enables you to modify settings which will make the driver react in different ways when downloading and or uploading information. Usually you will not need to alter any

of these driver settings and clicking the  OK button will accept the default values. To modify the driver properties once it has been installed, highlight the required driver icon and press the **F4** key. Alternatively you can right

click with the mouse over the required icon and select **Properties** from the pop up menu. Once you have made changes, click the  Apply button to make the changes effective.

Once you have installed the required instrument driver files your download manager window will look a little more complete.

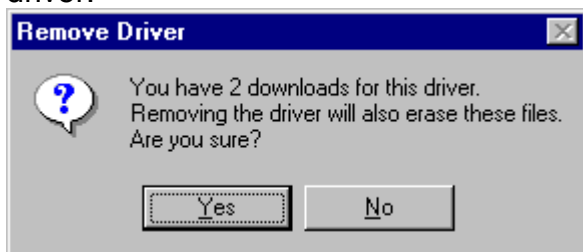


Removing Instrument Drivers

If you have accidentally installed an incorrect driver or wish to remove a driver because you no longer have the test instrument simply highlight the driver icon and press the delete key. You can also right click with the mouse after highlighting the icon and select Delete from the pop up menu. You will be shown the following confirmation message.



Click on the Yes button to remove the driver from the system. You may receive a further confirmation message if you have existing test results stored against the driver.



This message will ensure you do not accidentally delete any test results. You can cancel at this point by clicking the No button and backup your data before removing the driver.

Download Manager Interface

Status Bars

Along the bottom of the Download Manager window, you will see a gray bar which will give helpful information. When Download Manager is busy, the status bar will keep you up-to-date with what is happening.

Function Keys

To get help at any time, press the **F1** key or select **Help|Contents**. To refresh the download manager window press the **F5** key. (Pressing the **F5** key will refresh the number of downloads for each installed driver if the details view is active) To get the properties screen for an instrument, highlight it and press the **F4** key.

Entering Dates

Dates must be entered as set up in the Windows™ control panel.

File Types

When selecting a file, Download Manager will apply a filter and display files appropriate to the operation and program in use. Below is a full list of the file types and extensions used by Download Manager.

.ASC	Raw download files from test instruments. These files are stored in the Download Manager DRIVERS\xxxx\DATA sub folder of the instrument (xxxx) being used.
.BMP	Bitmap image. Usually small graphical image of test instrument used by download Manager when displaying the small icon, list and detail views.
.ICO	Icon image file. Usually large graphical image of test instrument used by download Manager when displaying the large icons view.
.INF	Instrument driver information file. Contains column headings for all data fields stored in the test instrument. This file is used by the CSV Viewer program when viewing download files.
.INI	Initialization file. e.g. VIEWER.INI which is referenced by the CSV Viewer program to determine which data columns are visible when a download file is loaded.
.CSV	Comma separated file format. This file format is compatible with the CSV Viewer program and is used by all download instrument drivers as the preferred format for storing download data. This file format can also be read by many other standard applications.
.ISU	File used by InstallShield software to uninstall the Download Manager and its components.
.TXT	Text file readable by notepad and word processor applications. Used by certain instrument download drivers as an alternative file format to store print captured data.
.ZIP	Compressed file containing programs and /or data files. ZIP files are used by Download Manager to install new instrument drivers.
.LNG	Language files. LNG files are text files which are capable of uploading to

certain test instruments.

Megger Technical Services Software Support: **T** +44 (0)1638 515 073. **F** +44 (0)1638 515 060.
E mts@megger.com

Downloading and Uploading

Downloading and Uploading Concepts

Many test instruments have a storage facility for results and transferring these results to a computer is called **Downloading**. Transferring data to a test instrument from a computer is called **Uploading** and is not as widely supported as downloading.

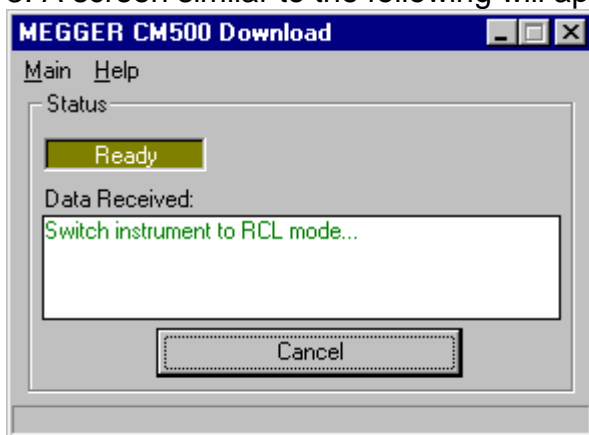
Each test instrument has its own protocol for controlling the transfer of data and may require a certain data transfer rate and cable as well as having its own internal storage format. The Download Manager drivers take care of many of these complications and ensure an easy to use common interface wherever possible regardless of the instrument being used.



Remember that all the test instruments supported by Megger Download Manager communicate in the first instance via serial communications. The test instrument will usually have a male or female 9 way D Type serial connector and the PC will **always have a male** 9 way or 25 way D Type serial connector.


Downloading Information

To transfer information from a test instrument follow these steps:

1. Ensure the test instrument is connected to a free communications port on the P.C. (with the correct cable)
2. Right click over the icon in the Download Manager window and select **Download** from the pop up menu.
3. A screen similar to the following will appear.



4. If the Ready indicator  is displayed follow any instructions in the 'Data Received' window to start the download.
5. As the download is running you will see the data appear in the 'Data Received' window and the  Data indicator will flash.

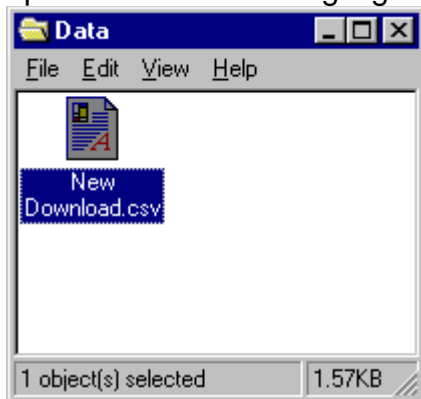
6. If the  Error indicator is displayed at any time this normally means there has been a breakdown in communications between the instrument and the computer.

If the download window does not appear you may not have a free communications port on the P.C. Check you have no running programs which may be using the communications port(s).

N.B. The download program will 'auto sense' which communications port the instrument is connected to. If the information does not download and there is another communications port available, try inserting the instrument cable into this port and download again.

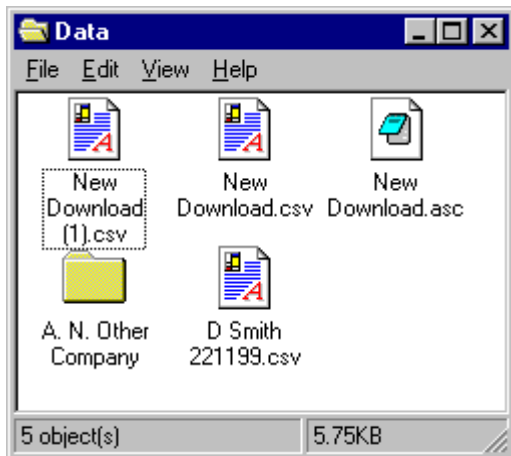
The Data Folder

When information is downloaded it is saved in a file in the test instrument's data folder. Each instrument has its own data folder and the Download Manager will open this folder and highlight the file when it has been downloaded.

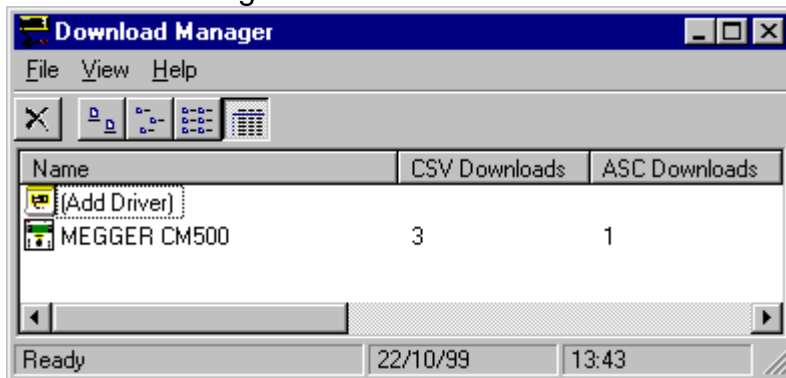


The Download Manager will name the file and give it the correct three character extension for type of download selected. (.csv in this instance which is the default download type for all instrument drivers). You can select the type of download you require by using the test instrument properties screen.

The Download Manager will automatically give unique names for the downloads but the files can be renamed, deleted or copied into other folders within the data folder at any time.

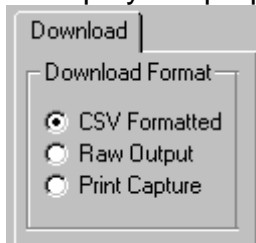


If you want to keep track of the number of download files you have for a particular test instrument you can press the F5 key from the details view in the Download Manager window which will refresh the screen.



Types of Download

Most test instrument drivers can download data in more than one format. Download Manager uses its own comma separated format as a default. When you download with the csv format option set in the properties screen, the file will have a .csv extension. If you want to change the format of the download data, highlight the instrument in the Download Manager window and press the **F4** key to display the properties.

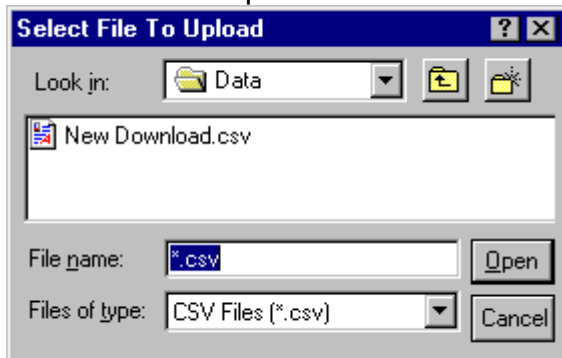


Most instruments will have a 'Raw Output' option available which will create a file with a .asc extension. You will be able to view these files with notepad like utilities. There may be other format options available which will have their own unique extensions. Once you have selected the type of download you require remember to click the OK button to save the setting.

Uploading Information

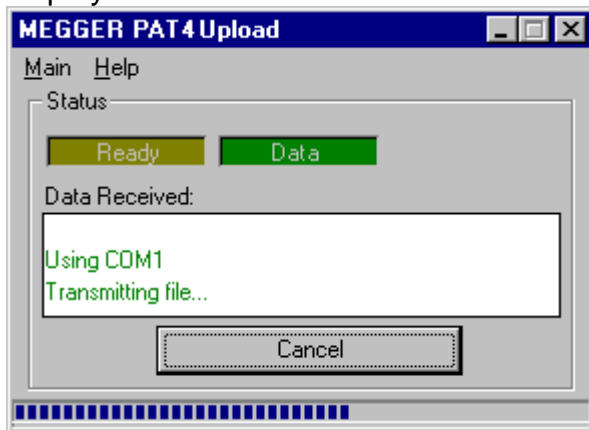
To transfer information to a test instrument follow these steps:


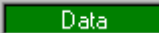


1. Ensure the test instrument is connected to a free communications port on the P.C. (with the correct cable)
2. Right click over the icon in the Download Manager window and select **Upload** from the pop up menu.
3. You will be required to select the file you wish to upload.



The selection screen will default to the instrument's data folder and default to one of the types of files the driver can upload. If the instrument is capable of uploading more than one type of file the 'Files of type:' drop down list will display the supported types.

4. Once you select the file to upload, a screen similar to the following will be displayed.



5. If the Ready indicator  is displayed follow any instructions in the 'Data Received' window to start the upload.
6. As the upload is running you may see the data appear in the 'Data Received' window and the  Data indicator will flash or there may be an indicator bar  active at the bottom of the upload window.
7. If the  Error indicator is displayed at any time this normally means there has been a breakdown in communications between the instrument and the computer.

If the upload window does not appear you may not have a free communications port on the P.C. Check you have no running programs which may be using the communications port(s).

N.B. The upload program will 'auto sense' which communications port the instrument is connected to. If the information does not upload and there is another communications port available, try inserting the instrument cable into this port and upload again.

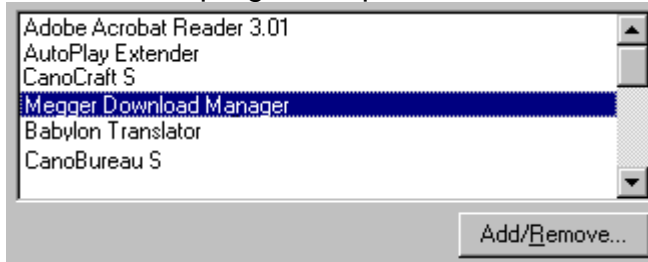
Megger Technical Services Software Support: **T** +44 (0)1638 515 073. **F** +44 (0)1638 515 060.
E mts@megger.com

Megger Download Manager Uninstalling

Uninstalling



If you wish to uninstall Megger Download Manager use the Add/Remove programs option in the Windows™ Control Panel.



Select Megger Download Manager from the list of programs which can be removed and click the Add/Remove button.

The uninstall program will only uninstall files which it installed so you may be left with the instrument driver folders and your data which you will have to manually remove. The Megger Download Manager is installed into the **Program Files\Megger Limited\Megger Download Manager** folder.

Megger Technical Services Software Support: **T** +44 (0)1638 515 073. **F** +44 (0)1638 515 060.
E mts@megger.com

Megger Download Manager
Appendix A - Troubleshooting

Appendix A - Troubleshooting

Download Manager FAQ

Megger Technical Services Software Support: **T** +44 (0)1638 515 073. **F** +44 (0)1638 515 060.
E mts@megger.com