

# Service Manual

**Simplified**

This is the Service Manual for the following areas.

M ...for U.S.A. and Canada  
 E ...for U.K.  
 G ...for Germany  
 F ...for France  
 S ...for Sweden  
 T ...for Italy  
 P ...for Spain

Notebook Computer

**CF-72**

**TOUGHBOOK**

## Model Number Reference

The following models are numbered in accordance with the types of CPU, LCD and HDD etc. featured by product.

Model No. CF-721 2 3 4 Z 5 6

1: CPU type

V: Mobile Intel® Pentium® 4 Processor 1.6 GHz-M

2: LCD type

C: 13.3" TFT Color with Touchscreen

3: 13.3" TFT Color

3: HDD type / RAM size

U: 30 GB / 256 MB /Smart Card

4: Drive / Modem - LAN

P: CD-ROM Drive / Combo

U: Floppy Disk Drive / DVD-ROM Drive / Combo

W: Floppy Disk Drive / DVD-ROM & CD-R/RW Drive (Combo Drive) / Combo

5: Operation System

D: Microsoft® Windows® 2000

F: Multi-Language (Microsoft® Windows® 2000)

G: Multi-Language (Microsoft® Windows® XP Professional)

K: Microsoft® Windows® XP Professional

Q: Dual OS (Microsoft® Windows® 2000 Professional / Microsoft® Windows® XP Professional)

6: Area

M/E /G /F /S /T /P: Refer to above area table

### WARNING


This service information is designed for experienced repair technicians only and is not designed for use by the general public. It does not contain warnings or cautions to advise non-technical individuals of potential dangers in attempting to service a product. Products powered by electricity should be serviced or repaired only by experienced professional technicians. Any attempt to service or repair the product or products dealt with in this service information by anyone else could result in serious injury or death.

**Panasonic®**

© 2002 Matsushita Electric Industrial Co., Ltd. All rights reserved. Unauthorized copying and distribution is a violation of law.

## Replacement Parts List Comparison Table

Note: Important Safety Notice

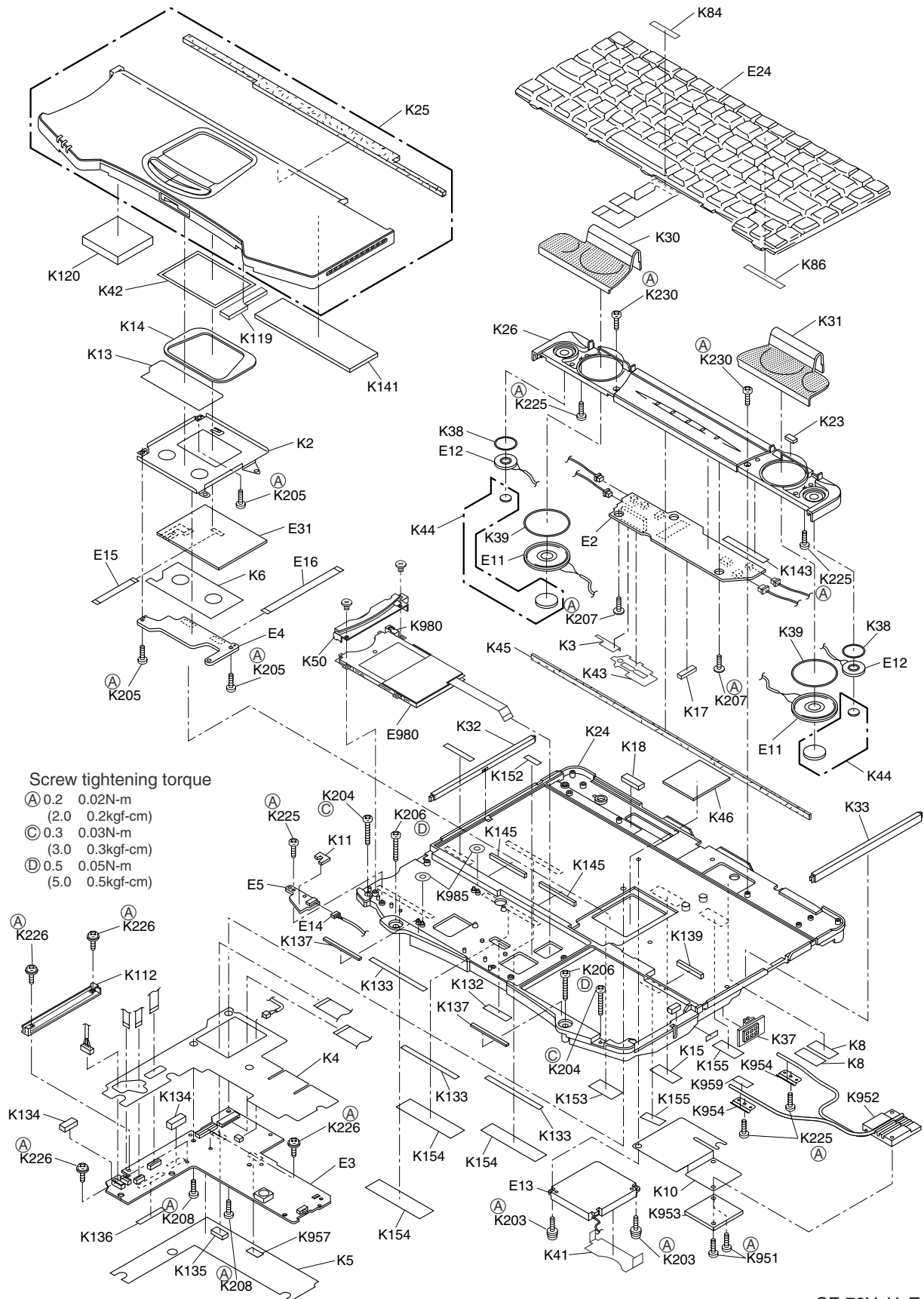
Components identified by  mark have special characteristics important for safety.

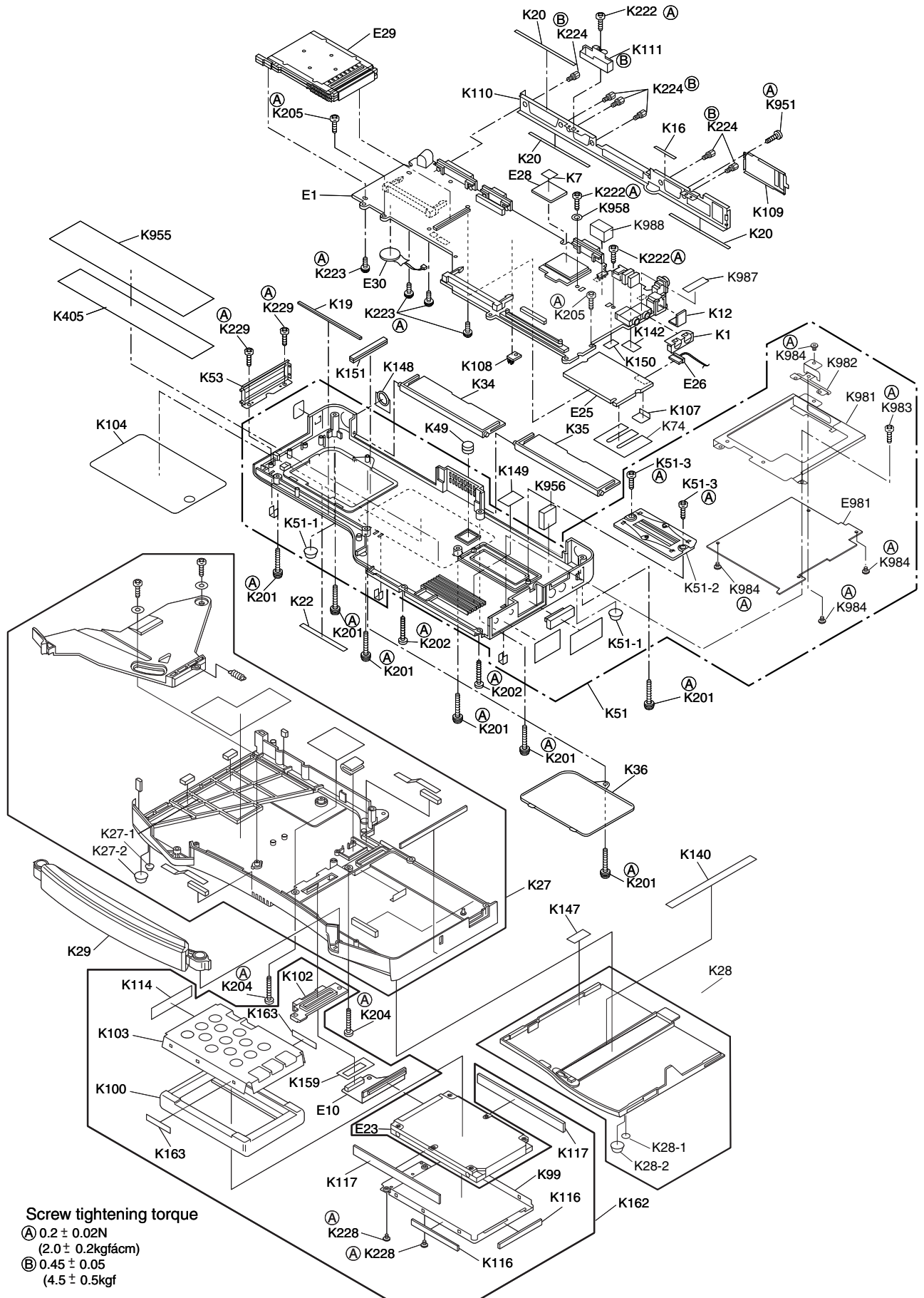
When replacing any of these components, use only manufacturer's specified parts.

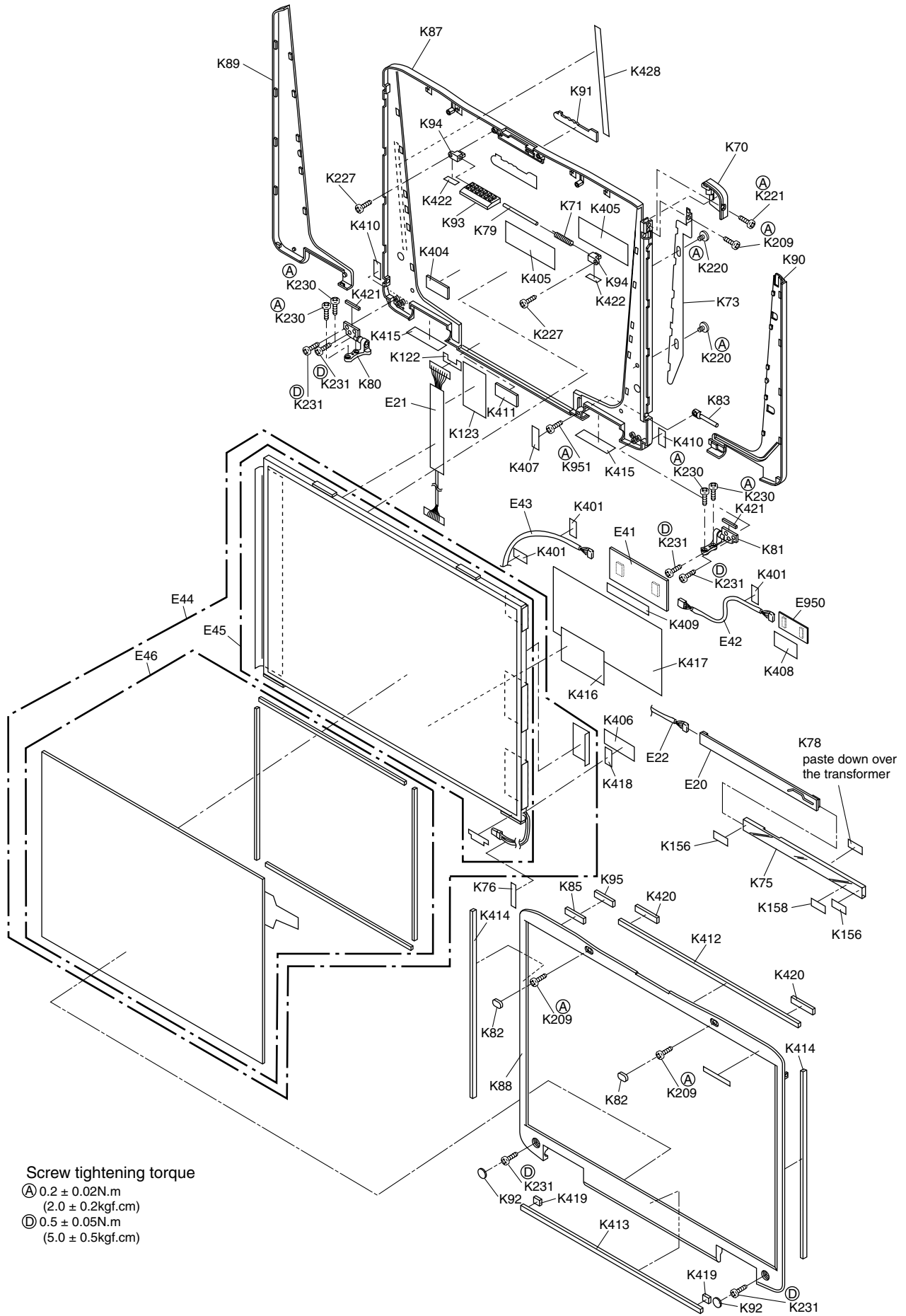
### CF-72VxUxZxx

REF. NO. and AREA	PART NO.		DESCRIPTION	Q'TY
	CF-72VxJxZxx	CF-72VxUxZxx		
<b>Main Block Unit</b>				
E 980	-----	K1NA10Z00001	SMART CARD SOCKET	0->1
E 981	-----	DL3UP1175CAA	PCB, SMART CARD	0->1
<b>Mechanical Parts</b>				
K 40	DFHR5850ZB	-----	BLOCK, PCB	1->0
K 50	DFKE0570YA-1	-----	COVER, SLOT, PALM	1->0
K 50	-----	DFKE0699ZA-1	BEZEL, SMART CARD	0->1
K 980	-----	DFBC0295ZA-0	EJECT KNOB	0->1
K 981	-----	DFMD7691UA	ANGLE	0->1
K 982	-----	DFMD7881ZA	ANGLE, GPRS	0->1
K 983	-----	XTN2+6G	SCREW	0->1
K 984	-----	DFHE5025XA	SCREW	0->4
K 985	-----	DFHE6015ZA	SPACER	0->2
K 987	-----	DFHR8381ZA	INSULATOR, JACK	0->1
K 988	-----	DFHR8384ZA	SPACER, BUS	0->1

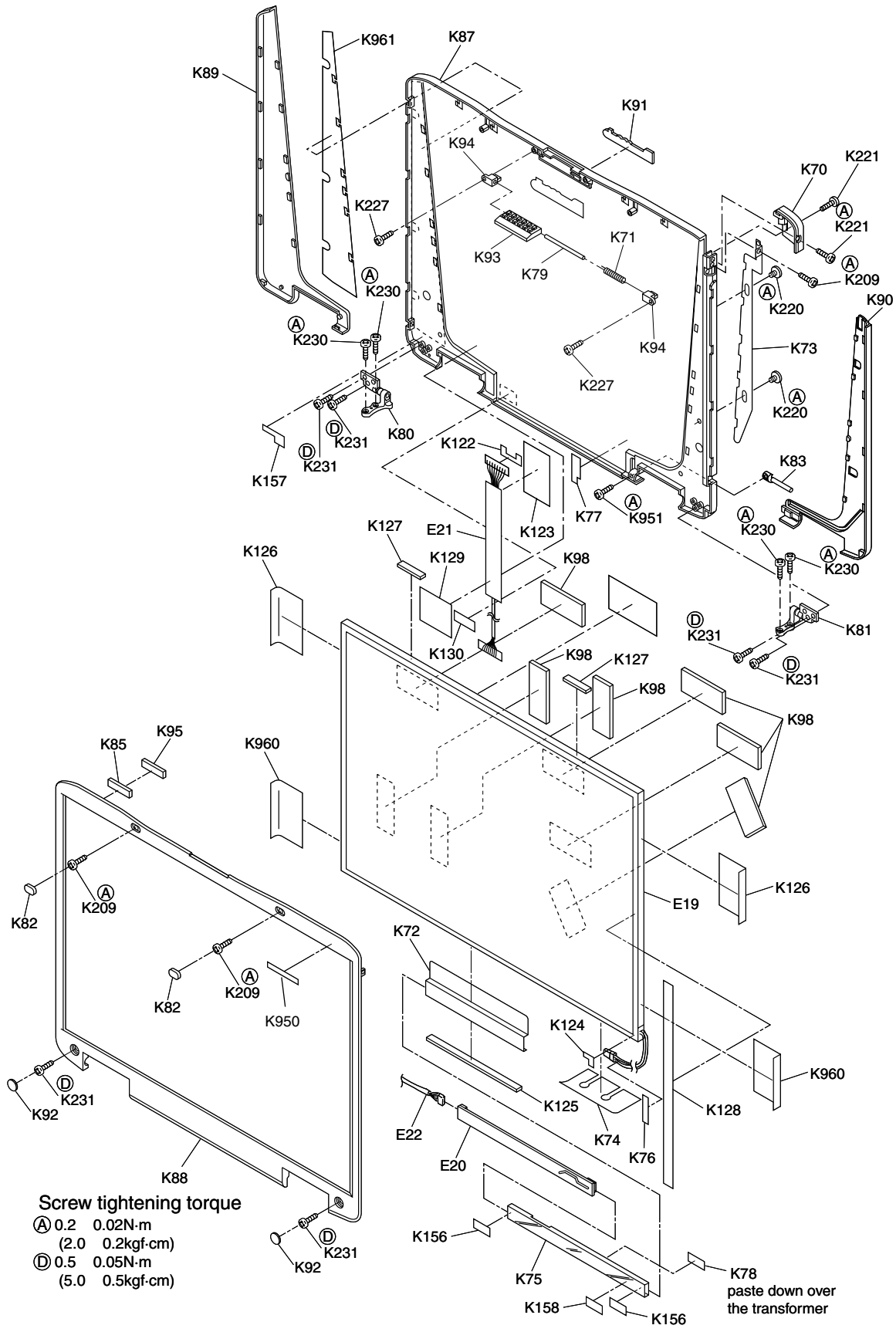
# Exploded View







**Screw tightening torque**  
 (A) 0.2 ± 0.02 N.m  
 (2.0 ± 0.2 kgf.cm)  
 (D) 0.5 ± 0.05 N.m  
 (5.0 ± 0.5 kgf.cm)



CF-72VxUxZxx

This page's exploded view is common to CF-72V3JxZxx