

PANEL LAMP TEST SOCKET

FILAMENT POSITIVE SWITCH NO. 1

ALL ROTARY SWITCHES SHOWN IN POSITION

PLATE SWITCH NO. 4

FRONT SECTIONS

REAR SECTIONS

- R1
- R2
- R3
- R4
- R5
- R6
- R7
- R8
- R9
- R10
- R11
- R12
- R13
- R19
- R25
- R26
- R27
- R28
- R29
- R30
- R31
- R32
- R33

ANALYZER SWITCH

50 µF
5000V

PUSH

NORMAL

REVERSE

GRID CAP

PLATE CAP

SHORT

TEST

SWITCH

R10

C1

FUSE

OFF

ON

PLATE AMP

B3

5Y3GT

BASE FUSE

R30

R3

R32

R33

R34

R29

R28

R37

R36

R35

R41

20

70

170

0

2.5

2.5

50

180

180

2.5

2.5

R45

R44

R40

R39

R38

R37

R36

R35

R41

R42

R43

R26

R27

R29

R28

R3

R2

R32

R31

R33

R34

R29

R28

R37

R36

R35

R41

R42

R43

R26

R27

R29

R28

R3

R2

R8

R1

R9

R4

R3

R5

R24

R18

P5

P4

P3

P2

P1

R9

R4

R3

R5

R25

R7

R6

R15

R1

R9

R4

R3

R5

R25

R7

R6

C3

R20

R21

R22

R23

R15

R10

R11

R12

R13

R14

R15

R16

R17

R18

R19

R20

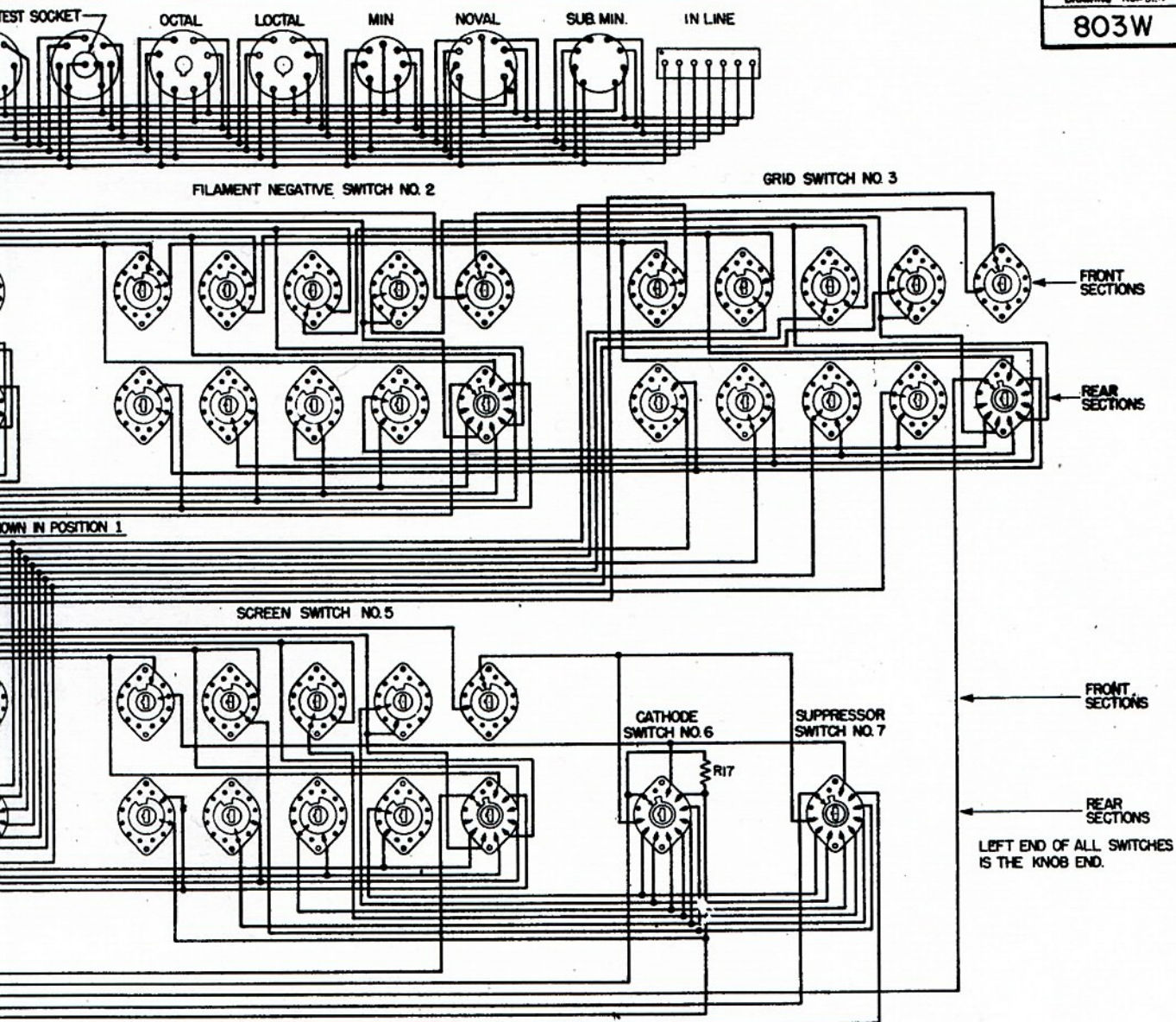
R21

R22

R23

R24

R25



R1	1800 Ω
R2	1200 Ω
R3	15000 Ω
R4	150 Ω
R5	150 Ω DUAL POT.
R6	8500 Ω ADJUST
R7	3000 Ω POT.
R8	180,000 Ω
R9	20 Ω
R10	330,000 Ω
R12	50 Ω
R13	50 Ω
R19	500 Ω
R25	500 Ω
R26	275 Ω
R27	31 Ω
R28	628,000 Ω
R29	2.366 M
R30	12,000 Ω
R31	3175 Ω
R32	22.6 Ω
R33	2.0 Ω

R14	150 Ω
R15	27,000 Ω
R16	200 Ω
R17	1 MEG
R20	47 Ω
R21	47 Ω
R22	47 Ω
R23	47 K
R24	215,000 Ω
C1	.1 MFD-400V
C2	.0027-1000 V.
R18	190 Ω
R34	.51 Ω
R35	9100 Ω
R36	90 K
R37	400 K
R38	500 K
R39	195 K
R40	.18 M
R41	950 Ω
R42	950 Ω
R43	950 Ω

C3	50MF 6V.
C4	.0027 V.
R44	8 M
R45	10 M

SCHEMATIC
MODEL 605A TUBE TESTER
MADE BY
THE HICKOK ELECTRICAL INSTRUMENT COMPANY.
CLEVELAND, OHIO

SCHEMATIC WIRING DIAGRAM		
USED ON MODEL 605A TUBE TESTER		DATE 11-5-52
DRAWN CHECKED APPROVED		DRAWING NUMBER
<i>JRB</i>	H.C. M. <i>JRB</i>	803W

K4XL's **BAMA**

This manual is provided **FREE OF CHARGE** from the “BoatAnchor Manual Archive” as a service to the Boatanchor community.

It was uploaded by someone who wanted to help you repair and maintain your equipment.

If you paid anyone other than BAMA for this manual, you paid someone who is making a profit from the free labor of others without asking their permission.

You may pass on copies of this manual to anyone who needs it. But do it without charge.

Thousands of files are available without charge from BAMA. Visit us at <http://bama.sbc.edu>