

DEPARTMENT OF THE ARMY TECHNICAL MANUAL

GENERAL SUPPORT MAINTENANCE REPAIR PARTS AND SPECIAL TOOLS LISTS (INCLUDING DEPOT MAINTENANCE REPAIR PARTS AND SPECIAL TOOLS) TEST SET, ELECTRON TUBE TV-6/U (FSN 6625-392-6929)

Headquarters, Department of the Army, Washington, DC
13 December 1974

Current as of 27 September 1974

Section I. INTRODUCTION		
Scope	1-1	2
General	1-2	2
Explanation of columns	1-3	2
Special information	1-4	4
Location of repair parts	1-5	4
Abbreviations (Not applicable)	1-6	4
Reporting of equipment publication improvements		4
II. REPAIR PARTS LIST	1-7...	6
III. SPECIAL TOOLS, TEST AND SUPPORT EQUIPMENT (Not applicable)		
IV. INDEX - FEDERAL STOCK NUMBER AND REFERENCE NUMBER CROSS REFERENCE TO FIGURE AND ITEM NUMBER		14

*This manual supersedes SIG 7 & 8 TV-6/U, 2 April 1957.

SECTION I

INTRODUCTION

1-1. Scope

lists repair parts and special tools required for the performance of general support and depot maintenance of the TV-6/U. The **PCCN for** the TV-6/U is GTEAEW for all models.

NOTE

No parts authorized for stockage at direct support.

1-2. General

This repair parts and special tools list is divided into the following sections:

a. Repair Parts List -Section II A list of repair parts authorized for the performance of maintenance at the general support and depot level. This repair parts list is arranged in alphabetical order.

b. Special Tools, Test and Support Equipment -Section III. Not applicable.

c. Index - Federal Stock Number and Reference Number Cross-Reference to Figure and Item Number -Section IV. A list, in ascending numerical sequence, of all Federal stock numbers appearing in the listings, followed by a list, in alphanumeric sequence, of all reference numbers appearing in the listings. Federal stock number and reference numbers are cross-referenced to each illustration figure and item number or reference designation appearance.

1-3. Explanation of Columns

The following provides an explanation of columns found in the tabular list.

a. Source, Maintenance, and Recoverability Codes (SMR).

(1) Source code. Indicates the manner of acquiring support items for maintenance, repair, or overhaul of end items. Source codes are:

Code	Explanation
P A -	Item procured and stocked for anticipated or known usage.
P B -	Item procured and stocked for insurance purposes because essentiality dictates that a minimum quantity be available in the supply systems.
P C -	Item procured and stocked and which otherwise would be coded PA except that it is deteriorative in nature.
P D -	Support item, excluding support equipment,

Code

Explanation

	procured for initial issue or outfitting and stocked only for subsequent or additional initial issues or outfittings. Not subject to automatic replenishment.
P E -	Support equipment procured and stocked for initial issue or outfitting to specified maintenance repair activities.
P F -	Support equipment which will not be stocked but which will be centrally procured on demand.
P G -	Item procured and stocked to provide for sustained support for the life of the equipment. It is applied to an item peculiar to the equipment which because of probable discontinuance or shutdown of production facilities would prove uneconomical to reproduce at a later time.
K D -	An item of depot overhaul/repair kit and not purchased separately. Depot kit defined as a kit that provides items required at the time of overhaul or repair.
K F -	An item of a maintenance kit and not purchased separately. Maintenance kit defined as a kit that provides an item that can be replaced at organizational or direct support or general support levels of maintenance.
K B -	Item included in both a depot overhaul/repair kit and a maintenance kit.
M O -	Item to be manufactured or fabricated at organizational level.
M F -	Item to be manufactured or fabricated at direct support maintenance level.
M H -	Item to be manufactured or fabricated at general support maintenance level.
M D -	Item to be manufactured or fabricated at depot maintenance level.
A O -	Item to be assembled at organizational level.
A F -	Item to be assembled at direct support maintenance level.
A H -	Item to be assembled at general support maintenance level.
A D -	Item to be assembled at depot maintenance level.
X.4 -	Item is not procured or stocked because the requirements for the item will result in the replacement of the next higher assembly.
X B -	Item is not procured or stocked. If not available through salvage, requisition.

- | Code | Explanation |
|------|---|
| XC — | Installation drawing, diagram instruction sheet, field service drawing, that is identified by manufacturers' part number. |
| XD — | Support items can be requisitioned with justification. |

NOTE

Cannibalization or salvage may be used as a source of supply for any items source coded above except those coded XA and aircraft support items as restricted by AR 700-42.

(2) *Maintenance code.* Maintenance codes are assigned to indicate the levels of maintenance authorized to USE and REPAIR support items. The maintenance codes are entered in the third and fourth positions of the Uniform SMR Code Format as follows:

(a) *Use (third position).* The maintenance code entered in the third position indicates the lowest maintenance level authorized to remove, replace, and use the support item. The maintenance code entered in the third position indicates one of the following levels of maintenance.

- | Code | Application/Explanation |
|------|---|
| O - | Support item is removed, replaced, used at the organizational level of maintenance. |
| NOTE | |
| | A code "C" may be used in this position to denote crew or operator maintenance performed within organizational maintenance. |
| F - | Support item is removed, replaced, used at the direct support maintenance level. |
| H - | Support item is removed, replaced, used at the general support maintenance. |
| D - | Support items that are removed, replaced, used at depot only. |

(b) *Repair (fourth position).* The maintenance code entered in the fourth position indicates whether the item is to be repaired and identifies the lowest maintenance level with the capability to perform complete repair (i.e., all authorized maintenance functions). When a maintenance code is not used a dash (-) sign is entered. For multiservice equipment/systems or when a code is entered, this position will contain one of the following maintenance codes as assigned by the service(s) that require the code:

- | Code | Application/Explanation |
|------|--|
| O - | The lowest maintenance level capable of complete repair of the support item is the organizational level. |

- | Code | Application/Explanation |
|------|--|
| F — | The lowest maintenance level capable of complete repair of the support item is direct support. |
| H - | The lowest maintenance level capable of complete repair of the support item is general support. |
| D - | The lowest maintenance level capable of complete repair of the support item is the depot level. |
| L - | Repair restricted to designated Specialized Repair Activity. |
| Z - | Non-repairable. No repair is authorized. |
| B - | No repair is authorized. The item may be reconditioned by dusting, lubricating, etc., at the user level No parts or special tools are procured for the maintenance of this item. |

(3) *Recoverability code.* Recoverability codes are assigned to support items to indicate the disposition action on unserviceable items. The recoverability code is entered in the fifth position of the uniform SMR Code Format as follows:

- | Code | Explanation |
|------|---|
| Z - | Nonrepairable item. When unserviceable, condemn and dispose at the level indicated in the first digit of the maintenance code. |
| O - | Repairable item. When uneconomically repairable, condemn and dispose at organizational level. |
| F - | Repairable item. When uneconomically repairable, condemn and dispose at the direct support level. |
| H - | Repairable item. When uneconomically repairable, condemn and dispose at the general support level. |
| D - | Repairable item. When beyond lower level repair capability, return to depot. Condemnation and disposal not authorized below depot level. |
| L - | Repairable item. Repair, condemnation, and disposal not authorized below depot/Specialized Repair Activity level. |
| A - | Item requires special handling or condemnation procedures because of specific reasons (i.e., precious metal content, high dollar value, critical material or hazardous material). |

b. *Federal Stock Number,* Indicates the Federal stock number assigned to the item and will be used for requisitioning purposes.

NOTE

To convert a Federal stock number to a National stock number (NSN), add "00" after the Federal Stock Classification (FSC) code (first four digits). For example, FSN 6625-553-0142 when converted is NSN 6625-00-553-0142.

c. **Description.** Indicates the Federal item name and a minimum description required to identify the item. The last line indicates the reference number followed by the applicable Federal Supply Code for Manufacturer (FSCM) in parentheses. The FSCM is used as an element in item identification designate manufacturer or distributor or Government agency, etc., and is identified in SB 708-42.

d. **Unit of Measure (U/M).** Indicates the standard or basic quantity by which the listed item is used in performing the actual maintenance function. This measure is expressed by a two-character alphabetical abbreviation; e.g., ea, in, pr, etc, and is the basis used to indicate quantities and allowances in subsequent columns. When the unit of measure differs from the unit of issue, the lowest unit of issue that will satisfy the required units of measure will be requisitioned.

e. **Quantity Incorporated in Unit.** This column indicates the quantity of the item used in the equipment. Subsequent appearances of the same item in the same assembly are indicated by the letters "REF".

f. **30-Day DS/GS Maintenance Allowances.**

NOTE

Allowances in GS column are for GS maintenance only.

(1) The repair parts indicated by asterisk entries in separate allowance columns for GS represent those authorized for use at that category of maintenance to be requisitioned on an "as required" basis, until stocked is based on demand in accordance with AR 710-2.

(2) Allowance quantities are indicated in the special tool lists section for special tools, TMDE, and other support equipment.

g. **1-Year Allowances Per 100 Equipments/Contingency Planning Purposes.** Column intentionally left blank

h. **Depot Maintenance Allowance Per 100 Equipments.** This column indicates opposite the first appearance of each item the total quantity authorized for depot maintenance of 100 equipments.

i. **Illustration.** This column is divided as follows:

(1) **Figure number.** Indicates the figure number of the illustration on which the item is shown in TM 11-5087.

(2) **Item number.** Indicates the item number or reference designation used to reference the item in the illustration.

1-4. Special Information

a. **Usable on codes** are included in column 3. Uncoded items are applicable to all models. Identification the usable on codes used in this publication are:

Code	Used on
BAY	TV-6/U

b. The following publication pertains to the TV-6/U and its components:

TM 11-5087	Electron Tube Test Set TV-6/U.
------------	--------------------------------

1-5. Location of Repair Parts

a. This manual contains cross-reference index (sec IV) to be used to locate a repair part when either the Federal stock number or reference number (manufacturer's part number) is known. The first column in the index is prepared in numerical or alphanumeric sequence in ascending order. The reference numbers (manufacturer's part numbers) are listed immediately following the last listed Federal stock number in the index of Federal stock numbers.

b. When the Federal stock number or reference number is known, follow the procedures given in (1) and (2) below.

(1) Refer to the index of Federal stock numbers (sec IV) and locate the Federal stock number or reference number. The FSN and reference number are cross-referenced to the applicable figure and item number or reference designation.

(2) Refer to the repair parts list (sec II) and locate the figure number (col 10a) and item number or reference designation (col 10b) as noted in the FSN index.

c. When the figure and item number or reference designation are known, scrutinize columns 10a and 10b of the repair parts list (sec II) until the item is located.

d. When the FSN, reference number, figure number, item number and reference designation are not known, scrutinize column 3 of the repair parts list (sec II), which is arranged in alphabetical order.

1-6. Abbreviations

Not applicable.

1-7. Reporting of Equipment Publication

Improvements

The reporting of errors, omissions, and recommendations for improving this publication by the individual

user is encouraged. Reports should be submitted on DA Form 2028 (Recommended Changes to Publications and Blank Forms) and forwarded direct to

Commander, US Army Electronics Command,
ATTN: AMSEL-MA-TMDE, Fort Monmouth, NJ
07703.

(1) SMR CODE	(2) FEDERAL STOCK NUMBER	(3) DESCRIPTION REFERENCE NUMBER & MFR. CODE USABLE ON CODE	(4) UNIT OF MEAS	(5) QTY INC IN UNIT	(6) 30-DAY DS MAINT ALLOWANCE			(7) 30-DAY GS MAINT ALLOWANCE			(8) 1-YR ALW PER 100 EQUIP CNTGCT	(9) DEPOT MAINT ALW PER 100 EQUIP	(10) ILLUSTRATION	
					(a)	(b)	(c)	(a)	(b)	(c)			(a)	(b)
					1-20	21-50	51-100	1-20	21-50	51-100			FIGURE NO.	ITEM NO.
PAHZZ	6135-120-1020	BATTERY BA-30 NO-REF-DESIG 1.5 V..... BA30 (80058)	EA	12				*	*	*		10	4	
PAHZZ	6135-120-1017	BATTERY BA-34 NO-REF-DESIG 7.5 V..... BA34 (80058)	EA	7				*	*	*		10	4	
XDHZZ		BATTERY BOX E5 POLYETHYLENE RECTANGULAR BOX 4-3/8 LG X 1 WD X 2-3/4 H B630-108-1 (12143)	EA	7				*	*	*			4	E5
PAHZZ	5935-197-4331	CONNECTOR, PLUG P1 6 FEMALE FLAT CONT .. POL STRAIGHT TYPE 1 LG X 11/16 WD X 3/4 H	EA	1				*	*	*		3	19	P1
PAHZZ	5935-201-9768	S306AB (71785) CONNECTOR, PLUG P2 8 FEMALE FLAT CONT .. POL STRAIGHT TYPE 1-13/32 H X 1 WD X 43/64 D	EA	1				*	*	*		3	19	P2
XDHZZ		S306CCT (71785) CONNECTOR, PLUG P3 8 FEMALE FLAT CONT .. POL STRAIGHT TYPE 1-13/32 LG X 1 WD X 43/64 D	EA	1				*	*	*			19	P3
PAHZZ	5935-259-4310	P306CCT (71785) CONNECTOR, PLUG P4 34 FEMALE RD CONT ... POL STRAIGHT TYPE 2 LG X 3/4 WD X 23/64 H	EA	1				*	*	*		3	19	P4
PAHZZ	5935-187-0723	MRE34SG (81312) CONNECTOR, PLUG P5 6 FEMALE FLAT CONT .. POL STRAIGHT TYPE 1-13/32 H X 1 LG X 43/64 D	EA	1				*	*	*		3	10	P5
PAHZZ	5935-149-5453	S306CCT (71785) CONNECTOR, RECEPTACLE J5 6 MALE FLAT.... CONT POL STRAIGHT TYPE 1 LG X 11/16 WD X 1-5/32 H	EA	2				*	*	*		3	13	J5
PAHZZ	5935-149-5453	P306AB (71785) CONNECTOR, RECEPTACLE J1 6 MALE FLAT.... CONT POL STRAIGHT TYPE 1 LG X 11/16 WD X 1-5/32 H	EA	REF				*	*	*		3	18	J1
XDHZZ		P306AB (71785) CONNECTOR, RECEPTACLE J2 8 MALE FLAT.... CONT POL STRAIGHT TYPE 1-1/4 LG X 11/16 WD X 1-5/32 H	EA	1				*	*	*			18	J2
PAHZZ	5935-149-2888	P306AB (71785) CONNECTOR, RECEPTACLE J3 8 FEMALE FLAT.. CONT POL STRAIGHT TYPE 1-1/4 LG X 11/16 WD X 3/4 H	EA	1				*	*	*		3	18	J3
XDHZZ		S306AB (71785) CONNECTOR, RECEPTACLE J4 34 MALE RD..... CONT POL STRAIGHT TYPE 2 LG X 3/4 WD X 23/64 H	EA	1				*	*	*			18	J4
XDHZZ		MRE34PG (81312) CONNECTOR, RECEPTACLE J6 6 MALE RD CONT 15/16 DIA X 3/32 THK	EA	1				*	*	*			11	J6
XDHZZ		SERIES70 (98291) CONTACT ASSEMBLY, ELECTRICAL S15 P/O.... HIGH IMPEDANCE WAFER OF MAIN SELECTOR SW	EA	1				*	*	*			5	S15

CONTINUED

SECTION II

T M 1 1 - 6 6 2 5 - 8 4 0 - 4 0 P

(1) SMR CODE	(2) FEDERAL STOCK NUMBER	(3) DESCRIPTION REFERENCE NUMBER & MFR CODE USABLE ON CODE	(4) UNIT OF MEAS	(5) QTY INC IN UNIT	(6) 30-DAY GS MAINT ALLOWANCE			(7) 30-DAY GS MAINT ALLOWANCE			(8) 1-YR ALW PER 100 EQUIP CHNGCY	(9) DEPOT MAINT ALW PER 100 EQUIP	(10) ILLUSTRATION	
					(a)	(b)	(c)	(a)	(b)	(c)			(a)	(b)
					1-20	21-50	51-100	1-20	21-50	51-100			FIGURE NO.	ITEM NO.
		CONTINUED												
PAHZZ	6625-309-5226	3/8 LG X 3/4 WD X 3/8 D 30210-1 (12143) NTACT ASSEMBLY, ELECTRICAL Z12 UPPER... ATE PHOSPHOR BRUNZE SILVER PLATE CUNT SOLDER LUG TYPE TERM 8-1/2 LG X 4- 8 WD X 1/4 THK	EA	1				*	*	*		3		212
XDHZZ		30-112-1 (12143) NTACT ASSEMBLY, ELECTRICAL Z11 BOTTOM... ATE PHOSPHOR BRUNZE, SILVER PLATE 12 LDER LUG TYPE TERM 8-1/2 LG X 4-1/8 X 1/4 THK	EA	1				*	*	*				211
PAHZZ	5355-668-1535	30-111-1 (12143) AL. CONTROL OI MOVEABLE SCALE TYPE 1- 4 DIA X 1-3/16 H	EA	1				*	*	*		2	7	C1
PAHZZ	5960-256-0001	218 (46791) ECTRON TUBE V1.....	EA	1				*	*	*		100	11	V1
PCMZZ	5330-663-8060	86 (81349) SKET E6 NEOPRENE RECTANGULAR 15 LG. 11 WD X 1/4 THK	EA	2				*	*	*		5		C6
PCMZZ	5330-663-8060	30-109 (12143) SKET E7 NEOPRENE RECTANGULAR 15 LG. 11 WD X 1/4 THK	EA	REF				*	*	*		5		C7
XDHZZ		30-109 (12143) SKET E8 NEOPRENE RECTANGULAR 5-1/8 . X 3-7/8 WD X 3/16 THK	EA	1				*	*	*				C8
XDHZZ		30-079 (12143) LDER, RESISTOR Z10 BLOCK TYPE BRASS.. DY 3/4 LG X 1/2 X 3/4 H	EA	1				*	*	*				213
XDHZZ		30-038-1 (12143) SULATOR, PLATE E2 TEFLON FOUR MTG.... LES 1-7/16 SQ X 21/64 THK	EA	1				*	*	*				C2
XDHZZ		30-045-1 (12143) SULATOR, PLATE E4 POLYETHYLENE CTANGULAR 4-3/8 LG X 2-27/32 H X 1/32 H	EA	1				*	*	*				C4
XDHZZ		30-093-1 (12143) SULATOR, STANDOFF NO-REF-DESIG TEFLON 087 OD X 0.169 ID X 1/2 H O/A	EA	1				*	*	*			6	
XDHZZ		30-237 (12143) SULATOR, WASHER NO-REF-DESIG TEFLON .. 1/16 OD X 0.169 ID X 0.38 H	EA	2				*	*	*			11	
PAHZZ	5355-160-6109	30-086 (12143) 08 02 BAR W/POINTER BLK ACCOM RD..... AFT 1/4 DIA 1-1/2 LG X 7/8 H C/A	EA	2				*	*	*		3	1	02
PAHZZ	5355-160-6109	46-3L88 (75376) 08 03 BAR W/POINTER BLK ACCOM RD..... AFT 1/4 DIA 1-1/2 LG X 7/8 H O/A	EA	REF				*	*	*		3	1	03
PAHZZ	5355-667-5972	46-3L88 (75376) 08 04 SET SCREW, RD 1-5/8 MAX OD X.. 11/32 THK O/A 8166054 (80063)	EA	1				*	*	*		3	1	C4

SECTION II

TM11-6625-840-40P

(1) SMR CODE	(2) FEDERAL STOCK NUMBER	(3) DESCRIPTION REFERENCE NUMBER & MFR. CODE USABLE ON CODE	(4) UNIT OF MEAS	(5) QTY INC IN UNIT	(6) 30-DAY DS MAINT ALLOWANCE			(7) 30-DAY GS MAINT ALLOWANCE			(8) 1-YR ALW PER 100 EQUIP CNTGCT	(9) DEPOT MAINT ALW PER 100 EQUIP	(10) ILLUSTRATION	
					(a)	(b)	(c)	(a)	(b)	(c)			(a)	(b)
					1-20	21-50	51-100	1-20	21-50	51-100			FIGURE NO.	ITEM NO.
PAHZZ		KNJB U5 POINTER BLACK TENITE FOR 1/4 . DIA SHAFT 1 LG X 5/8 H 70-4-2 (49956)	EA	2				*	*	*		3	1	U5
PAHZZ	5355-727-2870	KNJB G9 POINTER BLACK TENITE FOR 1/4 . DIA SHAFT 1 LG X 5/8 H 70-4-2 (49956)	EA	REF				*	*	*		3	1	U9
PAHZZ	5355-665-1307	KNJB U6 BAR BLACK PHENOLIC FOR 1/4 ... DIA SHAFT 1-1/4 LG X 5/8 H 281-LG94-U0 (13499)	EA	3				*	*	*		3	1	U6
PAHZZ	5355-665-1307	KNJB G7 BAR BLACK PHENOLIC FOR 1/4 ... DIA SHAFT 1-1/4 LG X 5/8 H 281-0094-U0 (13499)	EA	REF				*	*	*		3	1	G7
PAHZZ	5355-665-1307	KNJB U8 BAR BLACK PHENOLIC FOR 1/4 ... DIA SHAFT 1-1/4 LG X 5/8 H 281-LG94-U0 (13499)	EA	REF				*	*	*		3	1	U8
XDHZZ		KNJB U10 RD BLACK PHENOLIC FOR 1/4 ... DIA SHAFT 1 DIA X 5/8 H S453-1 (75376)	EA	5				*	*	*			1	U10
XDHZZ		KNJB U11 RD BLACK PHENOLIC FOR 1/4 ... DIA SHAFT 1 DIA X 5/8 H S453-1 (75376)	EA	REF				*	*	*			1	U11
XDHZZ		KNJB U12 RD BLACK PHENOLIC FOR 1/4 ... DIA SHAFT 1 DIA X 5/8 H S453-1 (75376)	EA	REF				*	*	*			1	U12
XDHZZ		KNJB U13 RD BLACK PHENOLIC FOR 1/4 ... DIA SHAFT 1 DIA X 5/8 H S453-1 (75376)	EA	REF				*	*	*			1	U13
XDHZZ		KNJB U14 RD BLACK PHENOLIC FOR 1/4 ... DIA SHAFT 1 DIA X 5/8 H S453-1 (75376)	EA	REF				*	*	*			1	U14
PAHZZ	6625-538-9697	LEAD, ELECTRICAL W1 1 COND, NO. 22 AWG . SPRING CLIP TERM ONE END, OTHER END TINNED 8 LG O/A INS SLEEVE IS MARKED PLATE B630-279-1 (12143)	EA	1				*	*	*		2	6	W1
PAHZZ	6625-538-9698	LEAD, ELECTRICAL W2 1 COND, NO. 22 AWG . SPRING CLIP TERM ONE END, OTHER END TINNED 8 LG O/A INS SLEEVE AROUND CLIP IS MARKED SCREEN B630-279-2 (12143)	EA	1				*	*	*		2	6	W2
PAHZZ	6625-567-2681	LEAD, ELECTRICAL W3 1 COND, NO. 22 AWG . SPRING CLIP TERM ONE END, OTHER END TINNED 8 LG O/A INS SLEEVE AROUND CLIP IS MARKED NEG FIL B630-279-3 (12143)	EA	1				*	*	*		2	6	W3
PAHZZ	6625-568-4875	LEAD, ELECTRICAL W4 1 COND, NO. 22 AWG . SPRING CLIP TERM ONE END, OTHER END TINNED 8 LG O/A INS SLEEVE AROUND CLIP IS MARKED POS FIL B630-279-4 (12143)	EA	1				*	*	*		2	6	W4
PAHZZ	6625-538-9699	LEAD, ELECTRICAL W5 1 COND, NO. 22 AWG . SPRING CLIP TERM ONE END, OTHER END CONTINUED	EA	1				*	*	*		2	6	W5

SECTION II

TM11-6625-840-40P

(1) SMR CODE	(2) FEDERAL STOCK NUMBER	(3) DESCRIPTION REFERENCE NUMBER & MFR. CODE USABLE ON CODE	(4) UNIT OF MEAS	(5) QTY INC IN UNIT	(6) 30-DAY GS MAINT ALLOWANCE			(7) 30-DAY GS MAINT ALLOWANCE			(8) 1-YR ALW PER 100 EQUIP CATGCT	(9) DEPOT MAINT ALW PER 100 EQUIP	(10) ILLUSTRATION	
					(a)	(b)	(c)	(a)	(b)	(c)			(a)	(b)
					1-20	21-50	51-100	1-20	21-50	51-100			FIGURE NO.	ITEM NO.
		CONTINUED												
XDHHD		TINNED 8 LG O/A INS SLEEVE AROUND CLIP IS MARKED OHMS 630-279-5 (12143) METER, ELECTRON TUBE TESTER M1 20 MICRO- AMP FULL SCALE DEFLECTION 4-1/2 DIA O/A X 1-3/4 BODY D C630-102-1 (12143)	EA	1				*	*	*			1	M1
XDHZZ		POST, BINDING E3 BRASS BASE 1 M O/A .. 1/2 OD AT POST B000-041 (12143)	EA	1				*	*	*				E3
PAHZZ	5905-087-5878	RESISTOR, FIXED, FILM R36 102 OHM..... PORMIPCT 1/2 W	EA	1				*	*	*		3	10	R36
PAHZZ	5905-121-9860	RM20K1020F (81349) RESISTOR, FIXED, COMPOSITION R23 300 OHM PORMSPCT 1 W	EA	1				*	*	*		3	10	R23
XDHZZ		RCR326301JS (81349) RESISTOR, FIXED, WIRE WOUND R22 680 OHM. PORMSPCT 1 W	EA	1				*	*	*			10	R22
XDHZZ		RU48681J (81350) RESISTOR, FIXED, WIRE WOUND R52 910 OHM. PORMSPCT 1 W	EA	1				*	*	*			19	R52
XDHZZ		RU48911J (81350) RESISTOR, FIXED, WIRE WOUND R26 1300 OHM PORMSPCT 1 W	EA	2				*	*	*			10	R26
XDHZZ		RU48102J (81350) RESISTOR, FIXED, WIRE WOUND R39 1000 OHM PORMSPCT 1 W	EA	REF				*	*	*			10	R39
PAHZZ	5905-054-8659	RU48102J (81350) RESISTOR, FIXED, FILM R35 1250 OHM..... PORMIPCT 1/2 W 9/16 LG X 5/32 DIA	EA	1				*	*	*		3	10	R35
XDHZZ		RM6501240F (81349) RESISTOR, FIXED, FILM R37 2,000 OHM..... PORMIPCT 1/2 W	EA	1				*	*	*			10	R37
PAHZZ	5905-806-4602	RM20R2001F (81349) RESISTOR, FIXED, FILM R1 3000 OHM..... PORMIPCT 1/2 W 9/16 LG X 5/32 DIA	EA	1				*	*	*		3	10	R1
PAHZZ	5905-892-7276	BUC302F (75042) RESISTOR, FIXED, FILM R11 5000 OHM..... PORMIPCT 1/2 W 9/16 LG X 5/32 DIA	EA	1				*	*	*		3	10	R11
XDHZZ		RM6504491F (81349) RESISTOR, FIXED, FILM R3 5000 OHM..... PORMSPCT 1/2 W 9/16 LG X 5/32 DIA	EA	1				*	*	*			10	R3
PAHZZ	5905-062-0537	B000-001-4 (06845) RESISTOR, FIXED, FILM R2 11,100 OHM..... PORMIPCT 1/2 W 9/16 LG X 5/32 DIA	EA	1				*	*	*		3	10	R2
PAHZZ	5905-914-9195	RM6501102F (81349) RESISTOR, FIXED, FILM R43 12,000 OHM.... PORMSPCT 1/2 W 9/16 LG X 5/32 DIA	EA	1				*	*	*		3	10	R43
PAHZZ	5905-823-3605	KLR20S1230R (81349) RESISTOR, FIXED, FILM R5 40,000 OHM..... PORMIPCT 1/2 W 9/16 LG X 5/32 DIA	EA	1				*	*	*		3	10	R5
		B000-001-3 (06845)												

SECTION II

TM11-6625-840-40P

(1) SWR CODE	(2) FEDERAL STOCK NUMBER	(3) DESCRIPTION	(4) UNIT OF MEAS	(5) QTY NAC NUN UNIT	(6) 30 DAY GS MAINT ALLOWANCE			(7) 30 DAY GS MAINT ALLOWANCE			(8) RFR ALN PER 100 EQUIP CATGCT	(9) DEPOT MAINT ALN PER 100 EQUIP	(10) ILLUSTRATION	
					(a)	(b)	(c)	(a)	(b)	(c)			(a)	(b)
		REFERENCE NUMBER & MFR CODE			P. 20	21-50	51-100	P. 20	21-50	51-100			FIGURE NO	ITEM NO
XDHZL		RESISTOR, FIXED, FILM R12 50,000 OHM.... PORMIPLT 1/2 W 9/16 LG X 5/32 DIA BOOU-601-5 (106845)	EA	1				*	*	*			10	R12
XDHZL		RESISTOR, FIXED, FILM R42 57,000 OHM.... PORMIPLT 1/2 W 9/16 LG X 5/32 DIA RNG509703F (81349)	EA	1				*	*	*			10	R42
XDHZL		RESISTOR, FIXED, FILM R53 197,000 OHM... PORMIPLT 1/2 W 9/16 LG X 5/32 DIA BOOU601-12 (106845)	EA	1				*	*	*			10	R53
PAHZZ	5905-985-5479	RESISTOR, FIXED, FILM R9 999,000 OHM.... PORMIPLT 1/2 W 9/16 LG X 5/32 DIA RNG509703F (81349)	EA	1				*	*	*		3	10	R9
XDHZZ		RESISTOR, FIXED, COMPOSITION R27 1 MEG.. PORMIPLT 1 W R36GF105J (81349)	EA	1				*	*	*			11	R27
PAHZZ	5905-279-2537	RESISTOR, FIXED, COMPOSITION R28 10 MEG.. PORMIPLT 1 W R32GF106J (81349)	EA	1				*	*	*		3	11	R28
XDHZZ		RESISTOR, FIXED, FILM R29 100 MEG..... PORMIPLT 1-3/4 LG X 3/16 DIA BOOU-602-7 (12143)	EA	1				*	*	*			11	R29
XDHZZ		RESISTOR, FIXED, FILM R30 1000 MEG..... PORMIPLT 1-3/4 LG X 3/16 DIA BOOU-602-6 (12143)	EA	1				*	*	*			11	R30
PAHZZ	5905-185-8496	RESISTOR, FIXED, FILM R31 10,000 MEG.... PORMIPLT 1-3/4 LG X 3/16 DIA BOOU-602-5 (12143)	EA	1				*	*	*		3	11	R31
PAHZZ	5905-185-8495	RESISTOR, FIXED, FILM R32 100,000 MEG... PORMIPLT 1-3/4 LG X 3/16 DIA BOOU-602-4 (12143)	EA	1				*	*	*		3	11	R32
XDHZZ		RESISTOR, FIXED, FILM R41 208,000 MEG... PORMIPLT 1-3/4 LG X 3/16 DIA BOOU-602-2 (12143)	EA	1				*	*	*			11	R41
XDHZZ		RESISTOR, FIXED, FILM R33 550,000 MEG... PORMIPLT 1-3/4 LG X 3/16 DIA BOOU-602-8 (12143)	EA	1				*	*	*			11	R33
XDHZZ		RESISTOR, FIXED, FILM R40 3,330,000 MEG.. PORMIPLT 3/4 LG X 3/16 DIA BOOU-602-1 (12143)	EA	1				*	*	*			11	R40
PAHZZ	5905-295-5164	RESISTOR, FIXED, FILM R34 5,000,000 MEG.. PORMIPLT 1-3/4 LG X 3/16 DIA BOOU-602-3 (12143)	EA	1				*	*	*		3	11	R34
PAHZZ	5905-805-1840	RESISTOR, VARIABLE, WIRE WOUND R47 10... OHM PORMIPLT 2 W ENCLOSED METAL CASE, 1 3/32 DIA X 5/8 D RAZONASAL00A (81349)	EA	1				*	*	*		3	10	R47
XDHZZ		RESISTOR, VARIABLE, COMPOSITION R51 50.. OHM PORMIPLT 2W COU1500-1 (12143)	EA	1				*	*	*			10	R51
PAHZZ	5905-581-1405	RESISTOR, VARIABLE, WIRE WOUND R20 400.. OHM PORMIPLT 2 W 1-9/32 DIA X 5/8 D EXCLUDING SHAFT RAZONASAS51A (81349)	EA	2				*	*	*		3	10	R20

SECTION II

T M 1 1 - 6 6 2 5 - 8 4 0 - 4 0 P

(1) SIR CODE	(2) FEDERAL STOCK NUMBER	(3) DESCRIPTION REFERENCE NUMBER & MFR. CODE USABLE QM CODE	(4) UNIT OF MEAS	(5) QTY INC IN UNIT	(6) 30-DAY GS MAINT ALLOWANCE			(7) 30-DAY GS MAINT ALLOWANCE			(8) 1-YR ALT PER 100 EQUIP CNGCTY	(9) DEPOT MAINT ALT PER 100 EQUIP	(10) ILLUSTRATION	
					(a)	(b)	(c)	(a)	(b)	(c)			(a)	(b)
					1-20	21-50	51-100	1-20	21-50	51-100			FIGURE NO.	ITEM NO.
PAHZZ	5905-581-1465	RESISTOR, VARIABLE, WIRE WOUND R21 400.. OHM PORMIOPCT 2 W 1-9/32 DIA X 5/8 D EXCLUDING SHAFT RA20NASAS01A (81349)	EA	REF				*	*	*		3	10	R21
XDHZZ		RESISTOR, VARIABLE, COMPOSITION R38 500.. OHM PORMIOPCT 2 W 1-3/32 DIA X 21/32 D J185011FS3048 (01121)	EA	1				*	*	*			5	R38
PAHZZ	5905-655-4051	RESISTOR, VARIABLE, WIRE WOUND R45 750.. OHM PORMIOPCT 2 W ENCLOSED METAL CASE. 1-9/32 DIA X 5/8 D RA20NAS0751A (81349)	EA	2				*	*	*		3	5	R45
PAHZZ	5905-655-4051	RESISTOR, VARIABLE, WIRE WOUND R46 750.. OHM PORMIOPCT 2 W ENCLOSED METAL CASE. 1-9/32 DIA X 5/8 D RA20NAS0751A (81349)	EA	REF				*	*	*		3	5	R46
PAHZZ	5905-174-4805	RESISTOR, VARIABLE, WIRE WOUND R14 750.. OHM PORMIOPCT 2 W RA20A2SA751AK (81349)	EA	6				*	*	*		3	10	R14
PAHZZ	5905-174-4805	RESISTOR, VARIABLE, WIRE WOUND R15 750.. OHM PORMIOPCT 2 W RA20A2SA751AK (81349)	EA	REF				*	*	*		3	10	R15
PAHZZ	5905-174-4805	RESISTOR, VARIABLE, WIRE WOUND R16 750.. OHM PORMIOPCT 2 W RA20A2SA751AK (81349)	EA	REF				*	*	*		3	10	R16
PAHZZ	5905-174-4805	RESISTOR, VARIABLE, WIRE WOUND R17 750.. OHM PORMIOPCT 2 W RA20A2SA751AK (81349)	EA	REF				*	*	*		3	10	R17
PAHZZ	5905-174-4805	RESISTOR, VARIABLE, WIRE WOUND R18 750.. OHM PORMIOPCT 2 W RA20A2SA751AK (81349)	EA	REF				*	*	*		3	10	R18
PAHZZ	5905-174-4805	RESISTOR, VARIABLE, WIRE WOUND R19 750.. OHM PORMIOPCT 2 W RA20A2SA751AK (81349)	EA	REF				*	*	*		3	10	R19
XDHZZ		RESISTOR, VARIABLE, COMPOSITION R7 5000.. OHM PORMIOPCT 1/2 W 3/4 DIA X 25/64 D EXCLUDING SHAFT C000609-1 (06840)	EA	1				*	*	*			13	R7
XDHZZ		RESISTOR, VARIABLE, WIRE WOUND R44 7500.. OHM PORMIOPCT 2 W RA20A2SA752AK (81349)	EA	1				*	*	*			10	R44
PAHZZ	5905-108-6174	RESISTOR, VARIABLE, WIRE WOUND R4 10,000 OHM PORMIOPCT 2 W RA20A2SAL03AK (81349)	EA	1				*	*	*		3	10	R4
XBHZZ		RESISTOR, VARIABLE, WIRE WOUND R24 2.... SECT 10,000 OHM PORMIOPCT EA SECT 2W 1-17/64 DIA X 1-1/4 D EXCLUDING SHAFT Z-252 (71450)	EA	1				*	*	*			5	R24
PAHZZ	5905-617-2606	RESISTOR, VARIABLE, COMPOSITION R25 40.. 300 OHM PORMIOPCT 1/2 W 3/4 DIA X 25/64 D EXCLUDING SHAFT RV51AYS0503A (81349)	EA	1				*	*	*		3	13	R25
		RESISTOR, VARIABLE R8 50,000 OHM.....	EA	1				*	*	*			13	R8
CONTINUED														

CONTINUED

SECTION II

TM11-6625-840-40P

SNR CODE	FEDERAL STOCK NUMBER	DESCRIPTION REFERENCE NUMBER & MFR. CODE USABLE ON CODE	UNIT OF MEAS	QTY INC UNIT	30-DAY GS MAINT ALLOWANCE			30-DAY GS MAINT ALLOWANCE			1-YR ALT PER 100 EQUIP CMTCTY	DEPOT MAINT ALT PER 100 EQUIP	ILLUSTRATION	
					(a)	(b)	(c)	(a)	(b)	(c)			(a)	(b)
					1-20	21-50	51-100	1-20	21-50	51-100			FIGURE NO.	ITEM NO.
		CONTINUED												
PAMZZ	5905-539-5016	ORN10PCT 1/2 W 3/4 DIA X 25/64 D EXCLUDING SHAFT 000-609-3 (06845) RESISTOR, VARIABLE, COMPOSITION R6 75... 100 OHM PORN20PCT 2W 1-1/16 DIA X 9/16	EA	1					*	*	*	3	5	R6
XDHZZ		U4MAY50753A (01349) RESISTOR, VARIABLE, WIRE WOUND R13 100... 100 OHM PORN50PCT 5 W 1-13/16 DIA X 2 D EXCLUDING SHAFT 100-601-5 (06845) RESISTOR, VARIABLE, WIRE WOUND R10 150... 100 OHM PORN50PCT 5 W 1-13/16 DIA X 2 D EXCLUDING SHAFT	EA	1					*	*	*		5	R13
PAMZZ	5905-283-8928	50KAZ (13499) WELL, ELECTRICAL CONNECTOR E9 ALUMINUM 1-1/32 LG X 2 WD X 55/64 THK WE34M1 (01312) SWITCH, LEVER, PILE UP S0 1 LEVER..... POSITION, 1 MOMENTARY POSITION 1-3/4 LG 1 3/4 WD X 1 H	EA	1					*	*	*	3	5	R10
XDHZZ		630-050-1 (12143) SWITCH, LEVER, PILE UP S0 1 LEVER..... POSITION, 1 MOMENTARY POSITION 1-3/4 LG 1 3/4 WD X 1 H	EA	4					*	*	*		5	S0
XDHZZ		630-051-1 (12143) SWITCH, LEVER, PILE UP S10 1 LEVER..... POSITION, 1 MOMENTARY POSITION 1-3/4 LG 1 3/4 WD X 1 H	EA	REF					*	*	*		5	S10
XDHZZ		630-051-1 (12143) SWITCH, LEVER, PILE UP S11 1 LEVER..... POSITION, 1 MOMENTARY POSITION 1-3/4 LG 1 3/4 WD X 1 H	EA	REF					*	*	*		5	S11
XDHZZ		630-051-1 (12143) SWITCH, LEVER, PILE UP S12 1 LEVER..... POSITION, 1 MOMENTARY POSITION 1-3/4 LG 1 3/4 WD X 1 H	EA	REF					*	*	*		5	S12
XDHZZ		630-051-1 (12143) SWITCH, ROTARY S1 7 SECT 12 POSITION .. 1 LG X 1-5/16 WD X 1-7/16 H	EA	1					*	*	*		5	S1
XDHZZ		630-013-1 (06840) SWITCH, ROTARY S2 2 SECT 6 POSITIONS .. 1 LG X 1-5/16 WD X 1-7/16 H	EA	1					*	*	*		5	S2
XDHZZ		630-012-1 (06845) SWITCH, ROTARY S3 4 SECT. 5 POSITIONS .. 1-1/8 LG X 1-5/16 WD X 1-7/16 H	EA	1					*	*	*		5	S3
XDHZZ		SERIES20 (71590) SWITCH, ROTARY S4 1 SECT 2 POSITIONS .. 1/8 LG X 1-5/16 WD X 1-7/16 H	EA	1					*	*	*		5	S4
XDHZZ		630-016-1 (06845) SWITCH, ROTARY S5 1 SECT 11 POSITIONS ..	EA	1					*	*	*		5	S5
		CONTINUED												

SECTION II

TM11-6625-840-40P

(1)	(2)	(3)	(4)	(5)	(6)			(7)			(8)	(9)	(10)	
SWR CODE	FEDERAL STOCK NUMBER	DESCRIPTION REFERENCE NUMBER & MFR. CODE USABLE QM CODE	UNIT OF MEAS	QTY INC IN UNIT	30-DAY DS MAINT ALLOWANCE			30-DAY GS MAINT ALLOWANCE			1-YR ALW PER 100 EQUIP CMTGCT	DEPOT MAINT ALW PER 100 EQUIP	ILLUSTRATION	
					(a)	(b)	(c)	(a)	(b)	(c)			(a)	(b)
					1-20	21-50	51-100	1-20	21-50	51-100			FIGURE NO.	ITEM NO.
		CONTINUED												
XDHZZ		5/8 LG X 1-5/16 WD X 1-7/16 M C63C-010-1 (06840) SWITCH, ROTARY S6 1 SECT 6 POSITIONS --	EA	1				*	*	*			5	S6
XDHZZ		5/8 LG X 1-5/16 WD X 1-7/16 M B63U-011-1 (06845) SWITCH, ROTARY S13 1 SECT 12 POSITIONS	EA	1				*	*	*			11	S13
XDHZZ		13/16 LG X 1-5/16 WD X 1-1/2 M C63U-015-1 (06840) SWITCH, SENSITIVE S7 DC 1-5/8 LG X 1-	EA	1				*	*	*			5	S7
XDHZZ		3/8 WD X 3/4 M B63U-109-1 (12143) SWITCH, SENSITIVE S14 SPST DC LEVER...	EA	1				*	*	*			14	S14
XDHZZ		TYPE ACTUATING MECHANISM 1-3/8 LG X 13/32 WD X 7/8 M V3-1ANDJVI (91924) TERMINAL, STUD NO-REF-DESIG BRASS CAD..	EA	1				*	*	*				
		PL 1-1/2 LG X 1/2 DIA B63U-085 (12143)												

INDEX- FEDERAL STOCK NUMBER AND REFERENCE NUMBER
CROSS-REFERENCE TO FIGURE AND ITEM NUMBER

STOCK NUMBER	FIGURE NO.	ITEM NO.	STOCK NUMBER	FIGURE NO.	ITEM NO.
5350-663-8080		E6	5905-581-1405	10	R20
54330-663-8080		E7	5905-581-1405	10	R21
5355-160-6109	1	02	5905-617-2606	10	R25
5355-160-8109	1	03	5905-655-4051	5	R45
5355-665-1307	6	06	5905-655-4051	5	R46
5355-865-1307	6	07	5905-805-1640	10	R47
5355-665-1307	6	08	5905-506-4602	10	R1
5355-667-5972	1	04	5905-823-3605	10	R5
			5905-692-7276	10	R11
			5905-914-9195	10	R43
			5905-983-5479	10	R9
5355-663-1335	7	01			
5355-727-2870	6	05			
5355-727-2870	6	09			
5905-054-2659	10	R35			
5905-082-0537	10	R2			
5905-087-5878	10	R36			
5905-108-6174	10	R22			
5905-121-9880	10	R4			
		R23			
5905-174-4805	10	R14	5935-149-2888	10	J3
5905-174-4805	10	R15	5935-149-5453	10	J5
5905-174-4805	10	R16	5935-149-5453	10	J1
5905-174-4805	10	R17	5935-187-0723	10	P5
5905-174-4805	10	R18	5935-197-4331	10	P1
5905-174-4805	10	R19	5935-201-9768	10	P2
5905-185-8493	11	R32			
5905-185-8496	11	R31	5935-259-4310	10	P4
5905-279-2537	11	R28			
			5960-256-0001	11	V1
			6135-120-1017	4	
			6115-120-1020	4	
5905-283-8828	5	R10			
5905-295-5164	11	R34			
5905-539-5016	5	R6			

REFERENCE NO.	MFR CODE	FIG. NO.	ITEM NO.	REFERENCE NO.	MFR CODE	FIG. NO.	ITEM NO.
A030-079	12143		E0	B000-602-5	12143	11	R31
A030-080	12143			B000-602-6	12143	11	R30
A030-095-1	12143		E2	B000-602-7	12143	11	R29
B030	B0058	4		B000-602-8	12143	11	R33
B034	B0058	4		B000-601-12	06845	10	R53
B030ZF	75042	10	R1	B030-011-1	06845	5	S6
B000-001	12143		E3	B030-038-1	12143		
B000-001-3	06845	10	R5	B030-085	12143		
B000-001-4	06845	10	R3	B030-093-1	12143		E4
B000-001-5	06845	5	R13	B030-108-1	12143		E5
B000-001-5	06845	10	R12	B030-109	12143		E6
B000-002-1	12143	11	R40	B030-109	12143		E7
B000-002-2	12143	11	R41	B030-109-1	12143	5	S7
B000-002-3	12143	11	R34	B030-237	12143		
B000-002-4	12143	10	R32	B030-279-1	12143		B1

By Order of the Secretary of the Army:

Official:

VERNE L. BOWERS

Major General, United States Army

The Adjutant General

FRED C. WEYAND

General, United States Army

Chief of Staff

Distribution:

Active Army:

USASA (2)	TOAD (14)
CNGB (1)	LRAD (10)
TSG (1)	ATAD (10)
USAMB (10)	USA Dep (1)
USAARENBD (1)	Sig Sec USA Dep (2)
TRADOC (2)	Sig Dep (2)
AMC (1)	USARDL (1)
MICOM (1)	USAERDAA (1)
TECOM (2)	USAERDAW (1)
ARADCOM (2)	Sig FLDMS (1)
ARADCOM Rgn (1)	Ft Richardson (ECOM Ofc) (1)
OS Maj Comd (2)	Units org under fol TOE (1 ea.):
USACC (2)	11-16
Armies (1)	11-97
HISA (Ft Monmouth) (18)	11-98
Ft Huachuca (5)	11-116
Ft Carson (5)	11-117
WSMR (1)	11-127
USASESS (5)	11-500(AA-AC)
Sve Colleges (1)	29-134
AD (1) except	29-136
SAAD (30)	

ARNG & USAR: None.

For explanation of abbreviations used, see AR 310-50.

★ U.S. GOVERNMENT PRINTING OFFICE: 1974-685132/370

END

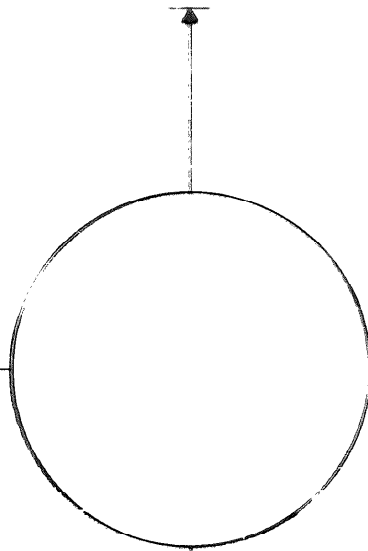
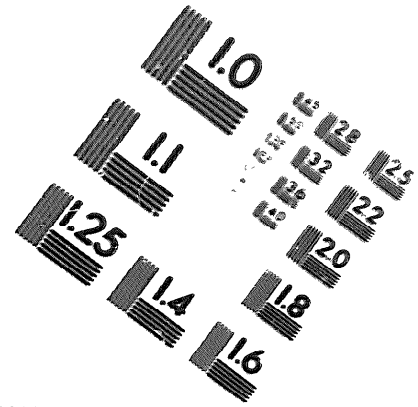
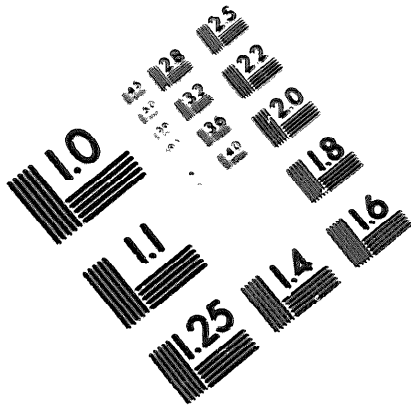
01-03-83

DATE



DEPARTMENT OF THE ARMY

MICROFORM TEST TARGET



150 MM

1.5 mm (e= 1.09 mm)
 ABCDEFGHIJKLMNOPQRSTUVWXYZ1234567890
 abcdefghijklmnopqrstuvwxyz\$%&'()*+,-./:;=<=>@*~

1.5 mm (e= 1.09 mm)
 ABCDEFGHIJKLMNOPQRSTUVWXYZ1234567890
 abcdefghijklmnopqrstuvwxyz\$%&'()*+,-./:;=<=>@*~

2.0 mm (e= 1.37 mm)
 ABCDEFGHIJKLMNOPQRSTUVWXYZ1234567890
 abcdefghijklmnopqrstuvwxyz\$%&'()*+,-./:;=<=>@*~

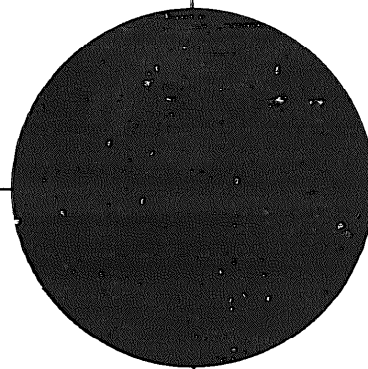
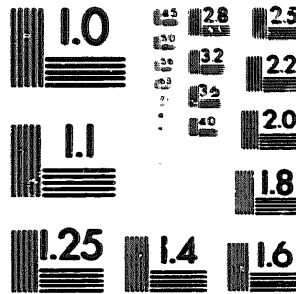
2.0 mm (e= 1.37 mm)
 ABCDEFGHIJKLMNOPQRSTUVWXYZ1234567890
 abcdefghijklmnopqrstuvwxyz\$%&'()*+,-./:;=<=>@*~

2.5 mm (e= 1.77 mm)
 ABCDEFGHIJKLMNOPQRSTUVWXYZ
 abcdefghijklmnopqrstuvwxyz
 1234567890\$%&'()*+,-./:;=<=>@*~

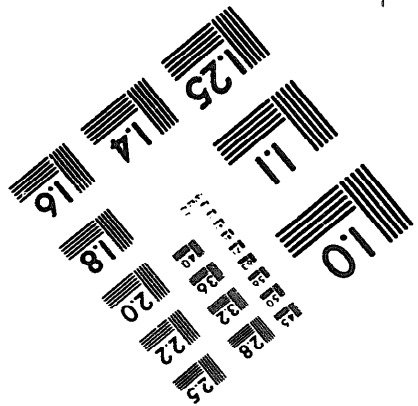
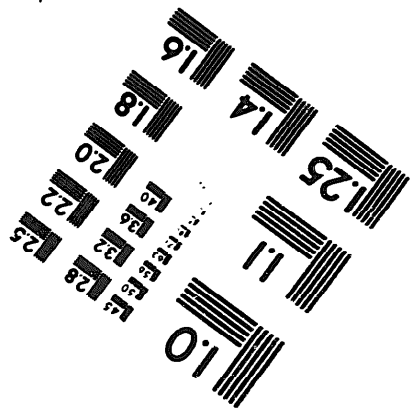
2.5 mm (e= 1.77 mm)
 ABCDEFGHIJKLMNOPQRSTUVWXYZ
 abcdefghijklmnopqrstuvwxyz
 1234567890\$%&'()*+,-./:;=<=>@*~

2.5 mm (e= 1.77 mm)
 ABCDEFGHIJKLMNOPQRSTUVWXYZ
 abcdefghijklmnopqrstuvwxyz
 1234567890\$%&'()*+,-./:;=<=>@*~

2.5 mm (e= 1.77 mm)
 ABCDEFGHIJKLMNOPQRSTUVWXYZ
 abcdefghijklmnopqrstuvwxyz
 1234567890\$%&'()*+,-./:;=<=>@*~



200 MM



250 MM