

# SA-20 EPROM PROGRAMMER

Stand-Alone 8 Gang Programmer

\$750.00

8 ZIF Sockets for  
Fast Gang  
Programming  
and Easy  
Splitting



20 x 4 Line  
LCD Display

20 Key Tactile Keypad  
(not membrane)

- Upgradeable to 32 Megabit EPROMs
- .3/.6" ZIF socket, RS-232, Parallel In and Out
- 32K internal Flash EEPROM for easy firmware upgrades
- Quick Pulse Algo. (eight 1 Megabit EPROMs in 40 sec.)
- Completely stand-alone or PC driven
- Technical support by phone
- Complete manual and schematic
- **Single Socket Programmer also available for \$550.00**
- Split and Shuffle 16 & 32 bit
- 100 User Definable Macros, 10 User Definable Configurations

- Completely menu-driven operation
- Easy to follow "software options" map
- Programs E(E)PROMs
- **1 Megabit of DRAM, user upgradeable to 32 Megabit**
- A9 Intelligent Identifier
- Binary, Intel Hex, and Motorola S formats
- Doubles as printer buffer when needed
- Free PC software included
- Memory editor functions include fill, copy, and search
- 2 year warranty
- Made in U.S.A.

## NEEDHAM'S ELECTRONICS

4535 Orange Grove Avenue • Sacramento, CA 95841  
Monday - Friday, 8:00 am - 5:00 pm PST

Call for more information

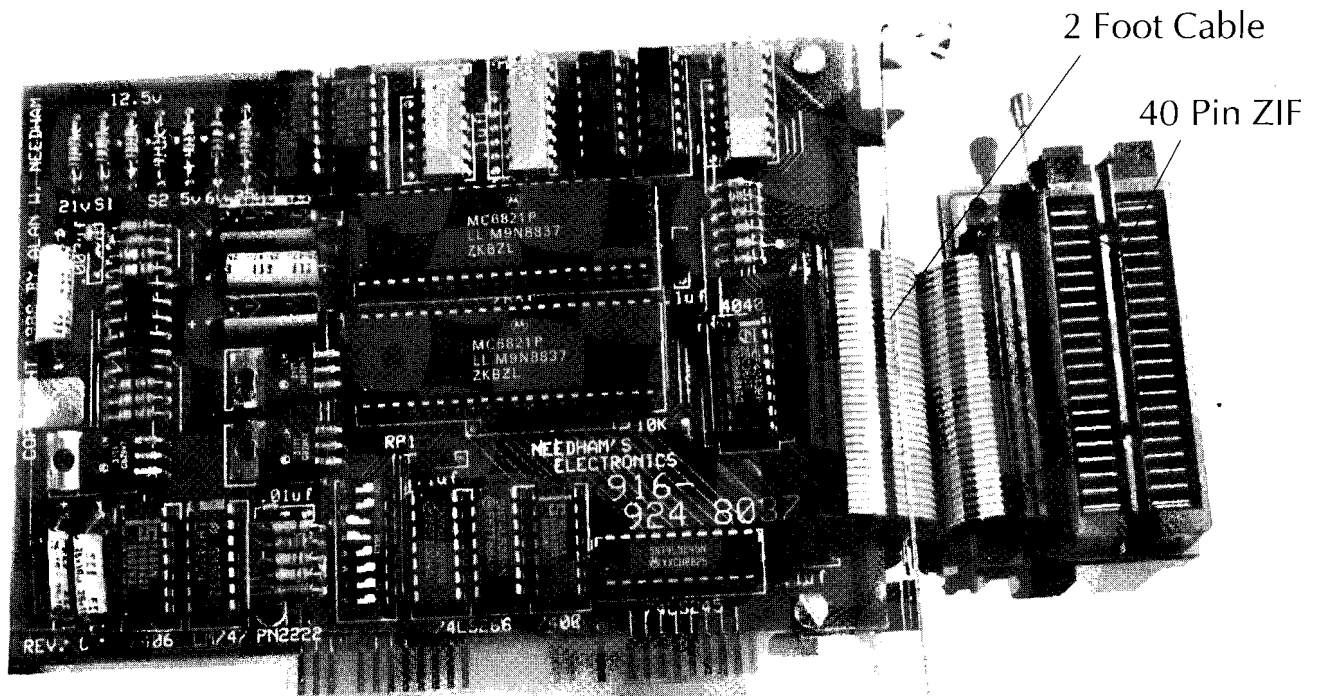
**(916) 924-8037**

FAX (916) 972-9960

# PC EPROM PROGRAMMER

Internal Card for PC or Compatible

\$129.95



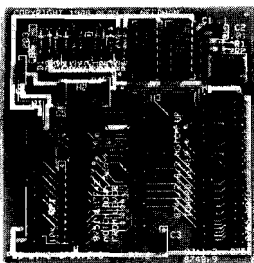
- Reads, verifies, and programs 2716, 32, 32A, 64, 64A, 128, 128A, 256, 512, 513, 010, 011, 301, 27C2001, MCM 68764, 2532
- **Automatically sets programming voltage**
- Load and save buffer to disk
- Supports binary, Intel Hex, and Motorola S formats
- **Upgradeable to 32 Meg EPROMs**
- **No personality modules required**

- New intelligent averaging algorithm. Programs 64A in 10 sec., 256 in 1 min., 1 Meg (27010, 011) in 1 min. 32 sec., 2 Meg (27C2001) in 3 min. *\*Tested on 10 MHz PC/AT*
- All chips socketed
- 10 day money back guarantee
- Editor with different entry modes, including string and hex
- 16 bit and 32 bit split
- 1 year warranty

## Adapter Modules for PC Programmer

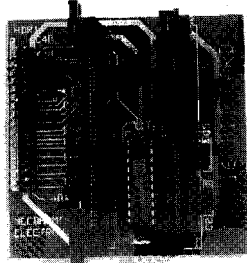
### Micro Adapter \$50

Programs 8751, 52, C51, 51A, 1K1S7742, 8748(1), 49(1), 55



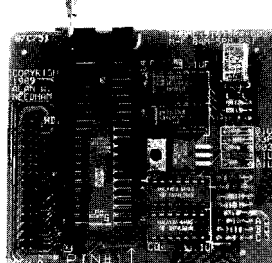
### Epson Adapter \$50

Programs 40 and 50 pin EPROM and SRAM Cards



### 87C751 Adapter \$50

Programs 87C751 & 87C752  
• Locks Security Bits •



### 210 Adapter \$50

Programs 27210, 271024, and 57C1024

