

SHIBASAKU 725 45 1-06975B-8

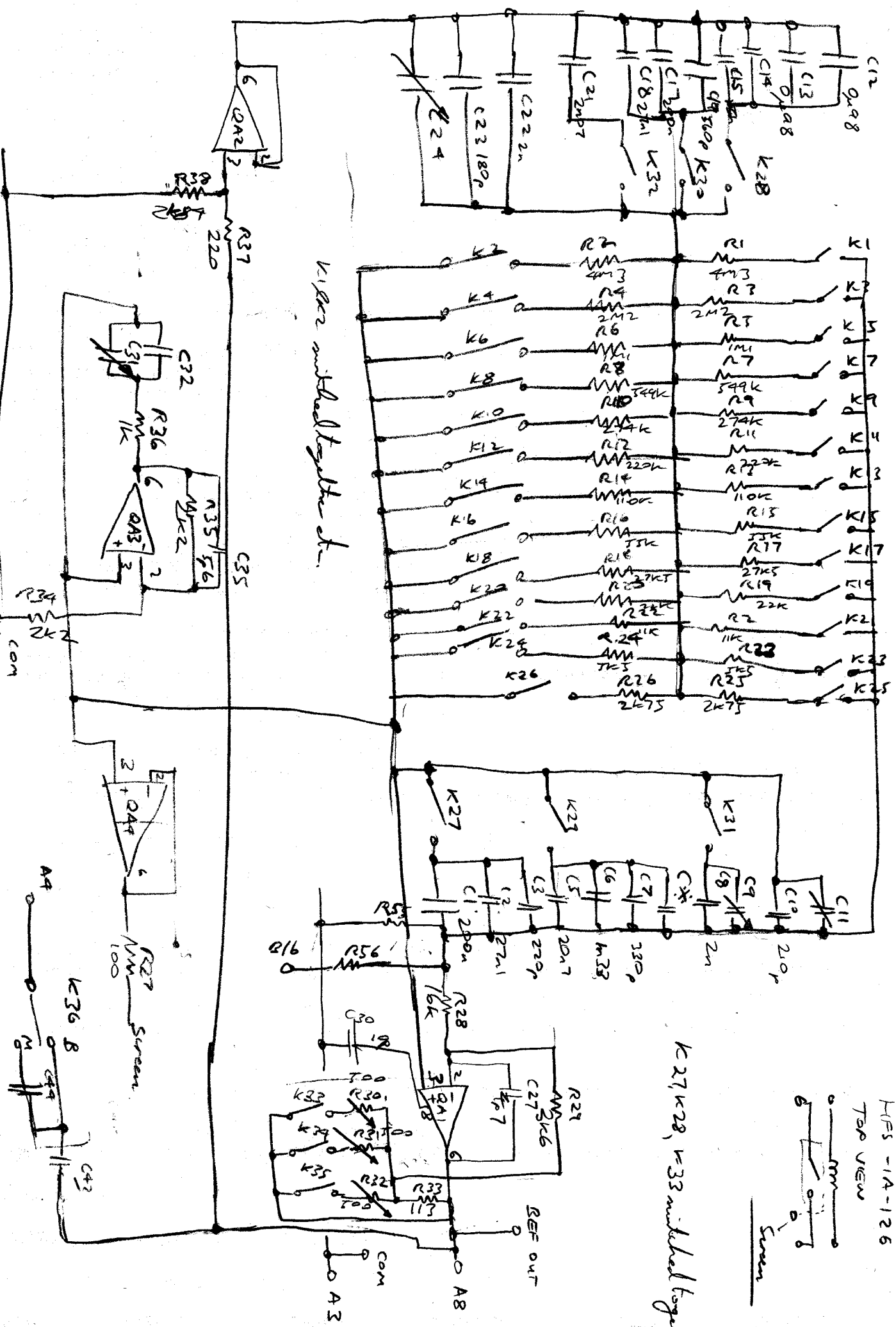
HFS-1A-126

TOP VIEW



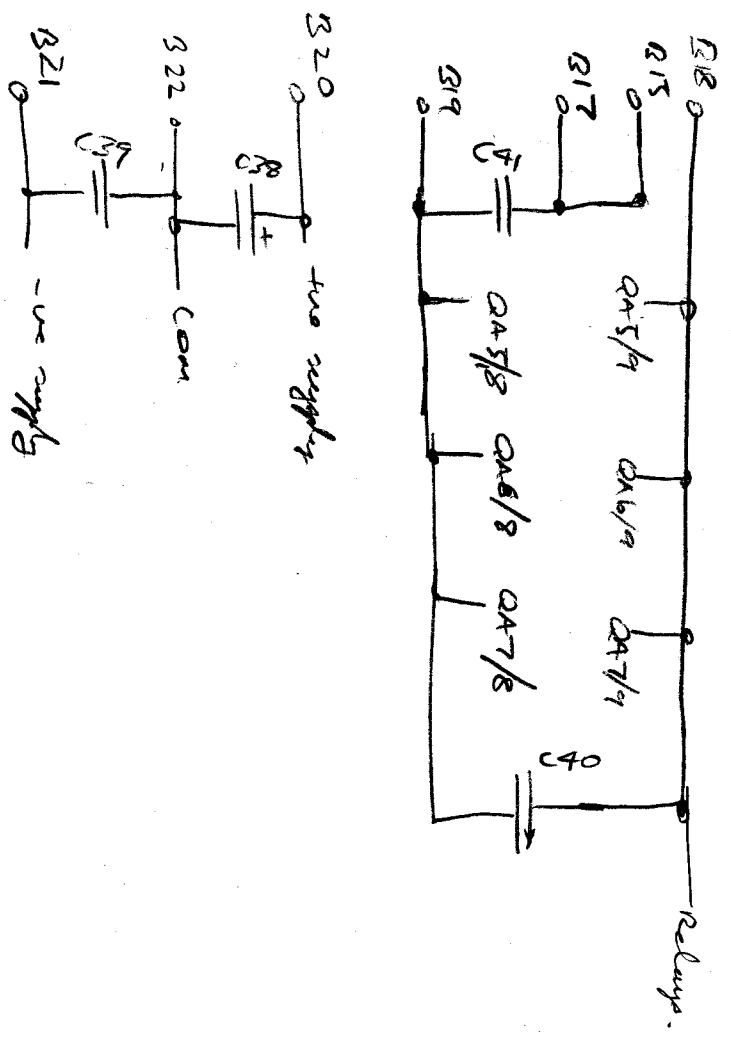
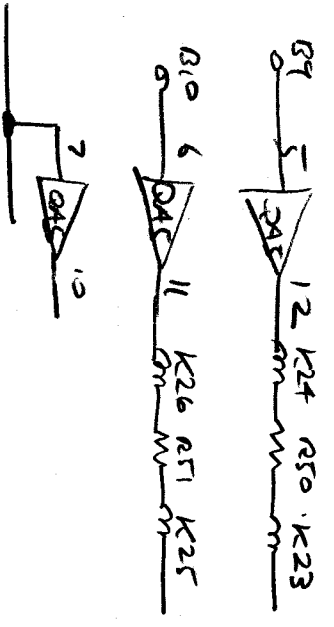
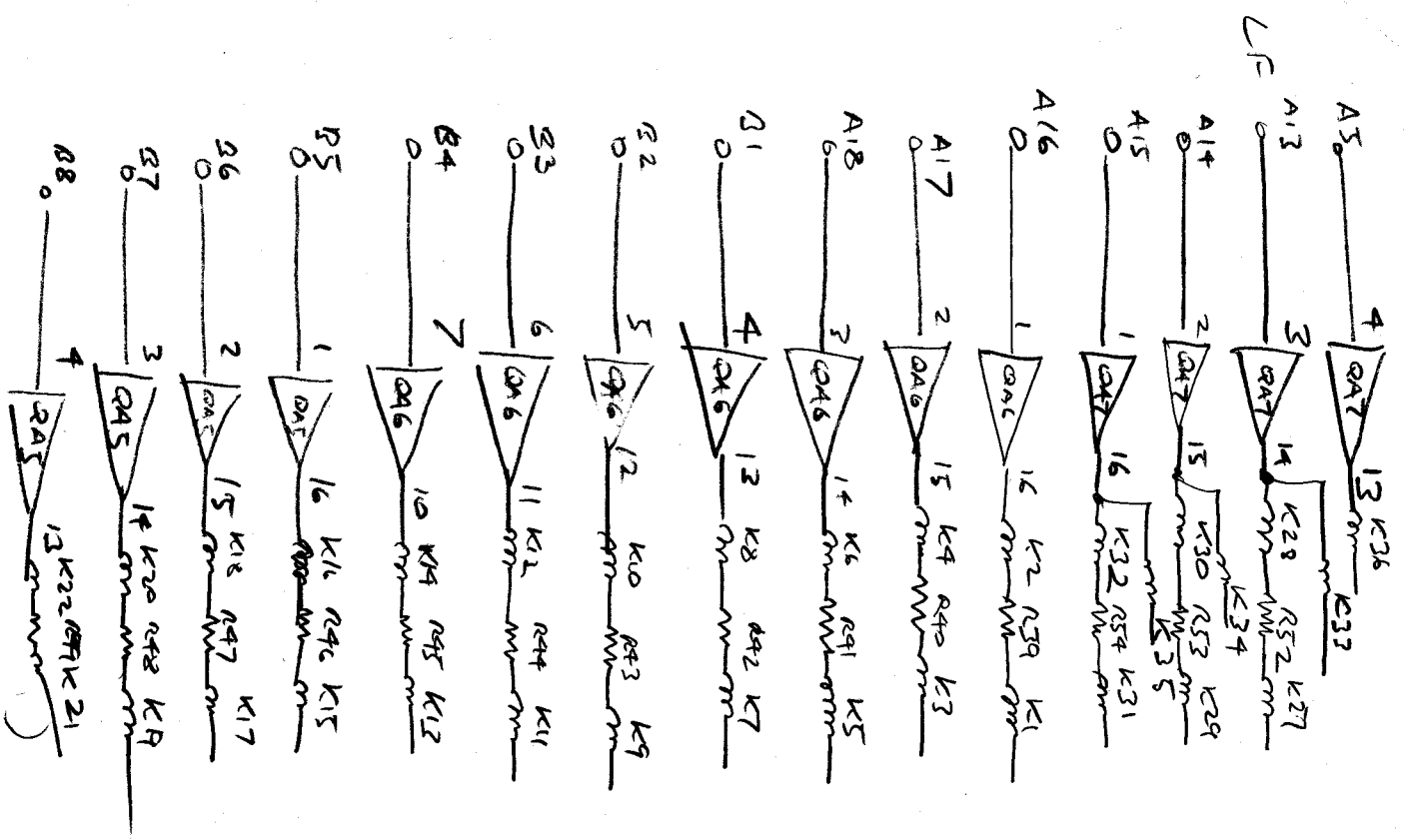
K27, K28, K33 interlocked together

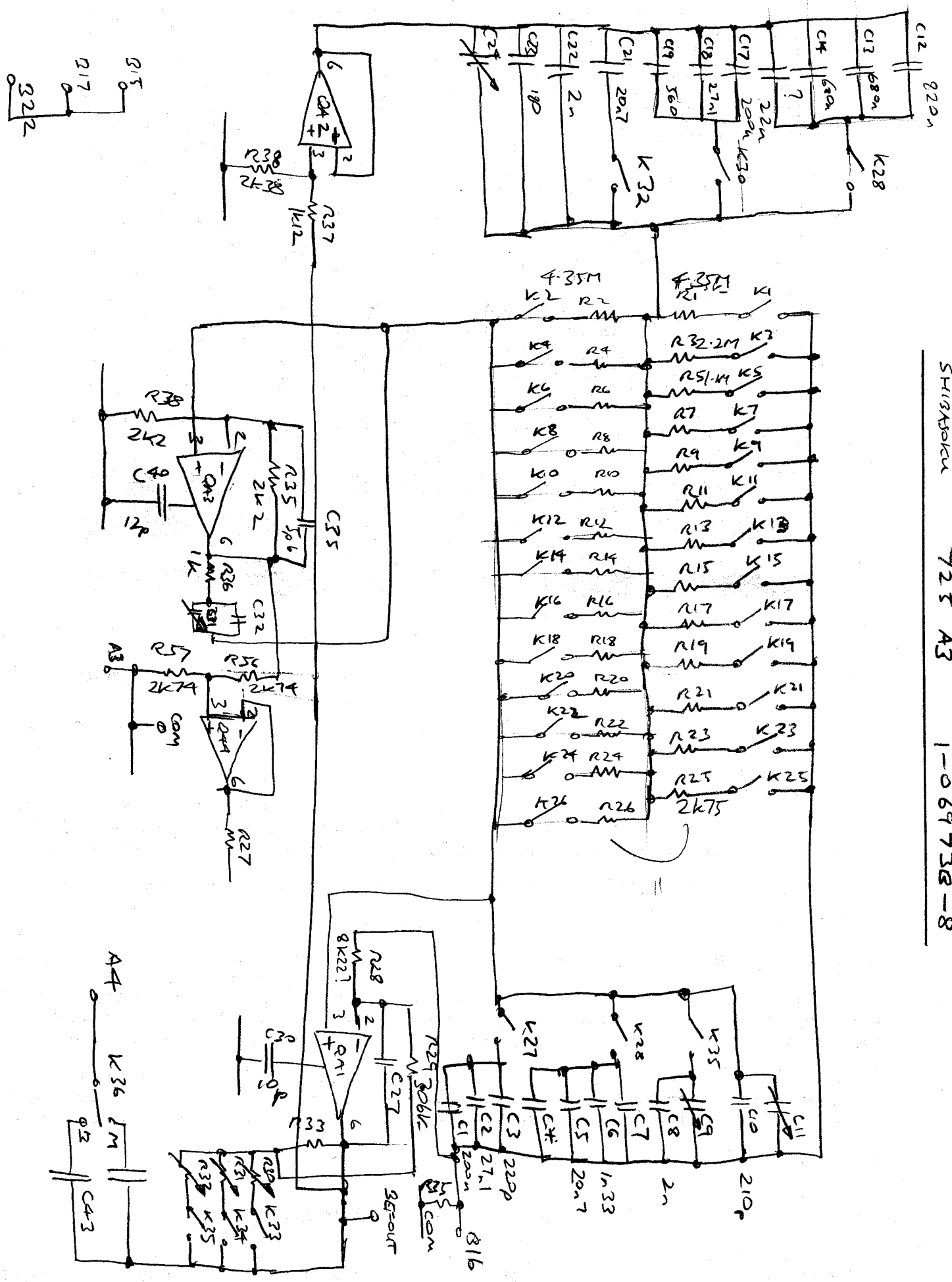
K1, K2 interlocked together

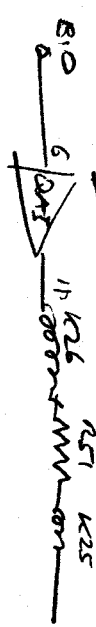
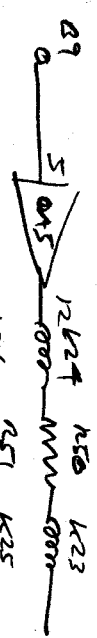
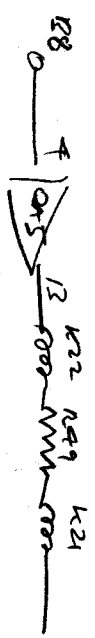
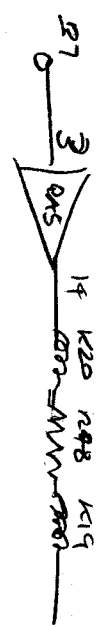
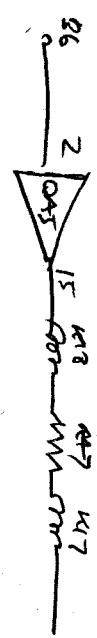
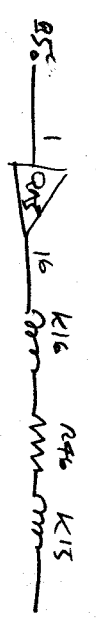
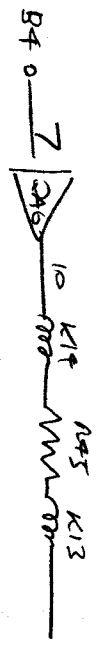
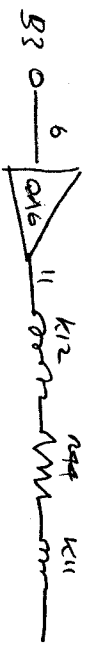
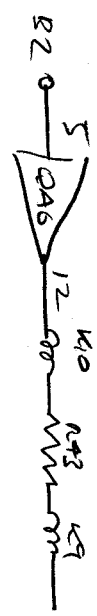
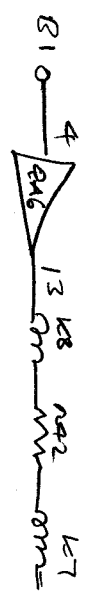
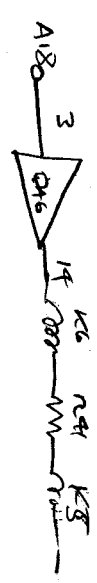
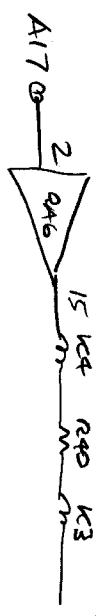
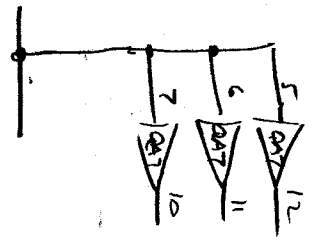
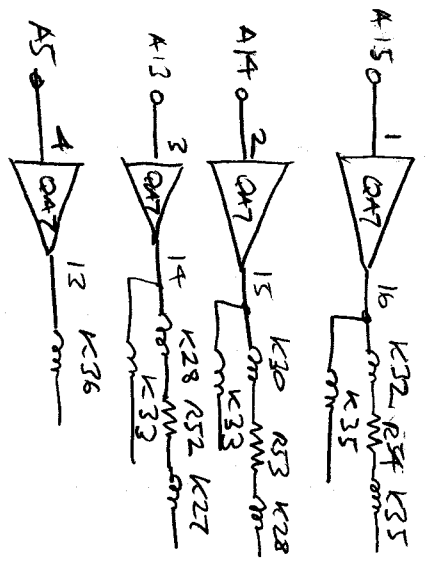


1)

1)



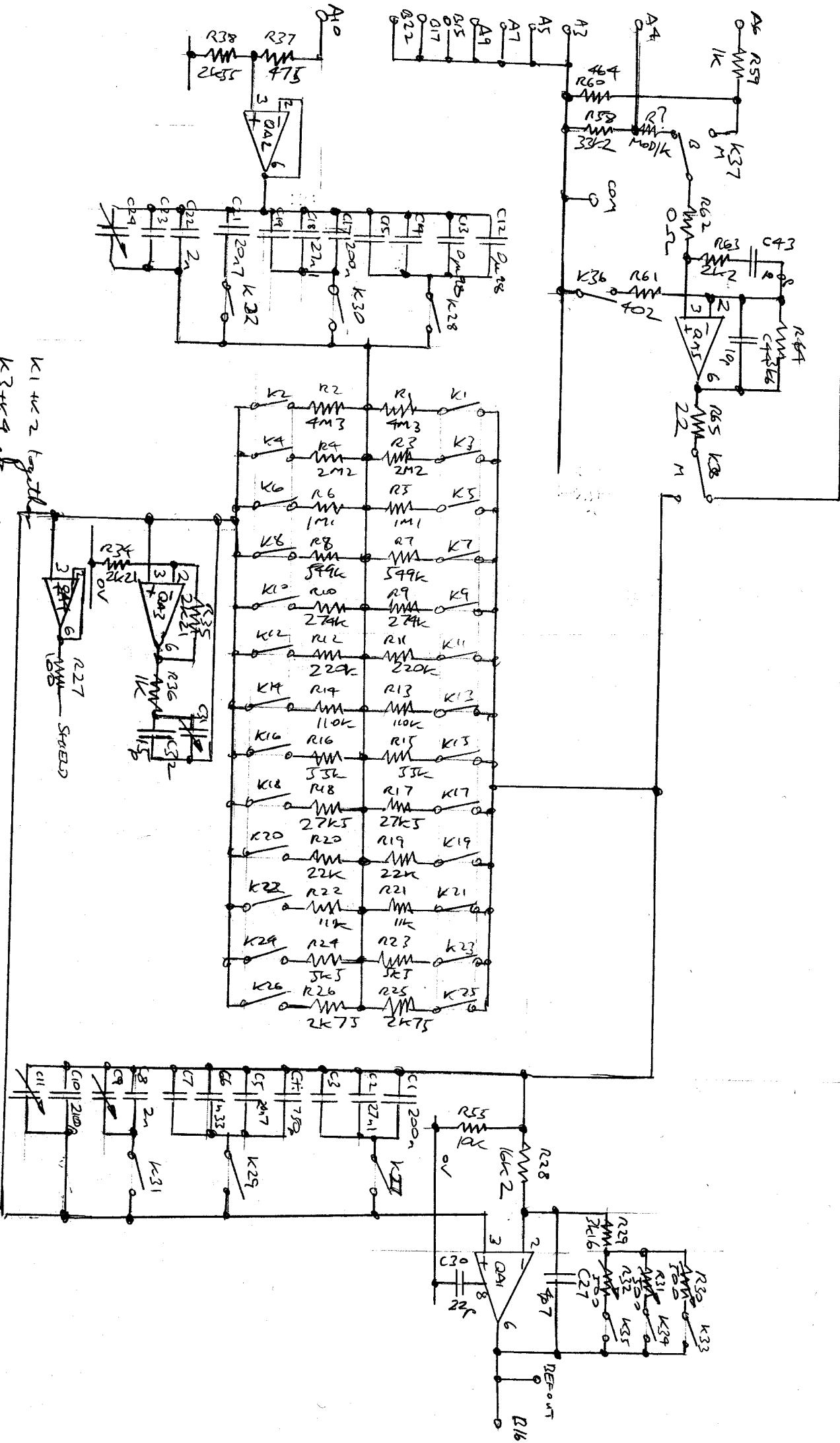




STARTER 725 A4 1-06974 R-8

X10 amplifier

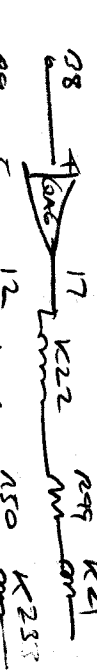
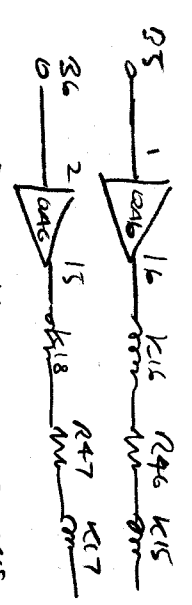
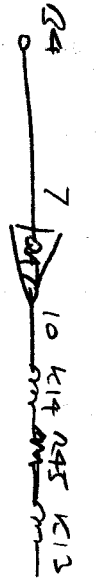
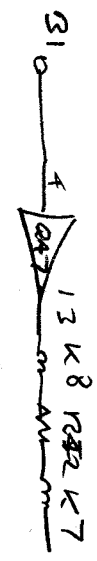
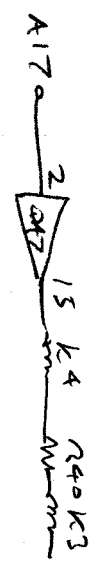
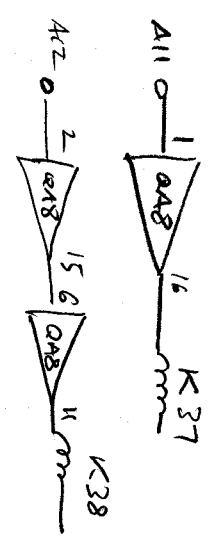
Range switching K17, K28 & K33 by the



K1 & K2 together
K3 & K4 etc.

SPEED

REPORT
D16

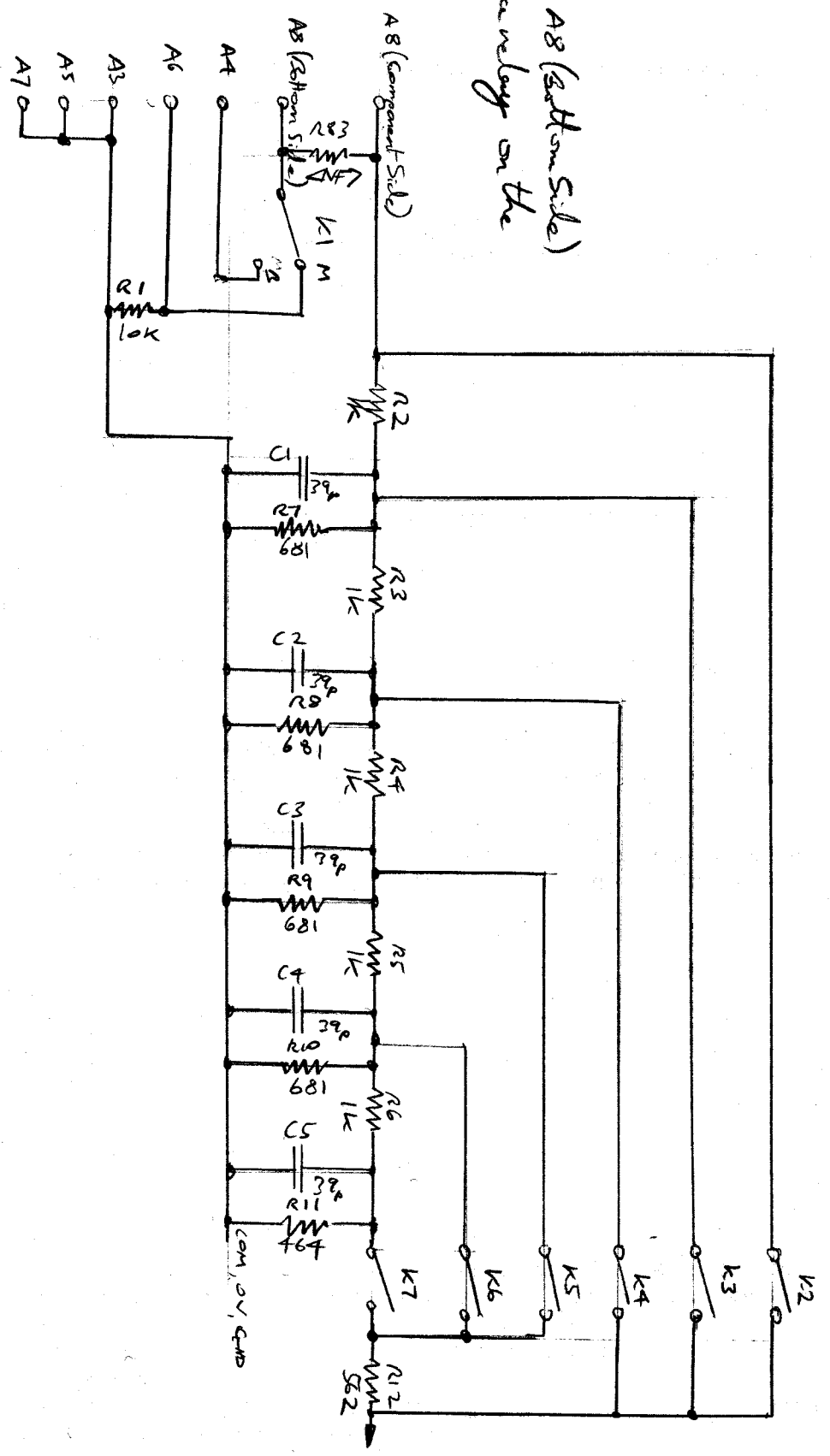


Q20 +ve supply

Q21 -ve supply

A8 (Component Side) and A8 (Bottom Side) are connected together by a relay on the Mother Board.

It appears to be an addition so that a weighing filter can be inserted before the detection measurement system.



SHIMASOKU 2-06976 B-9

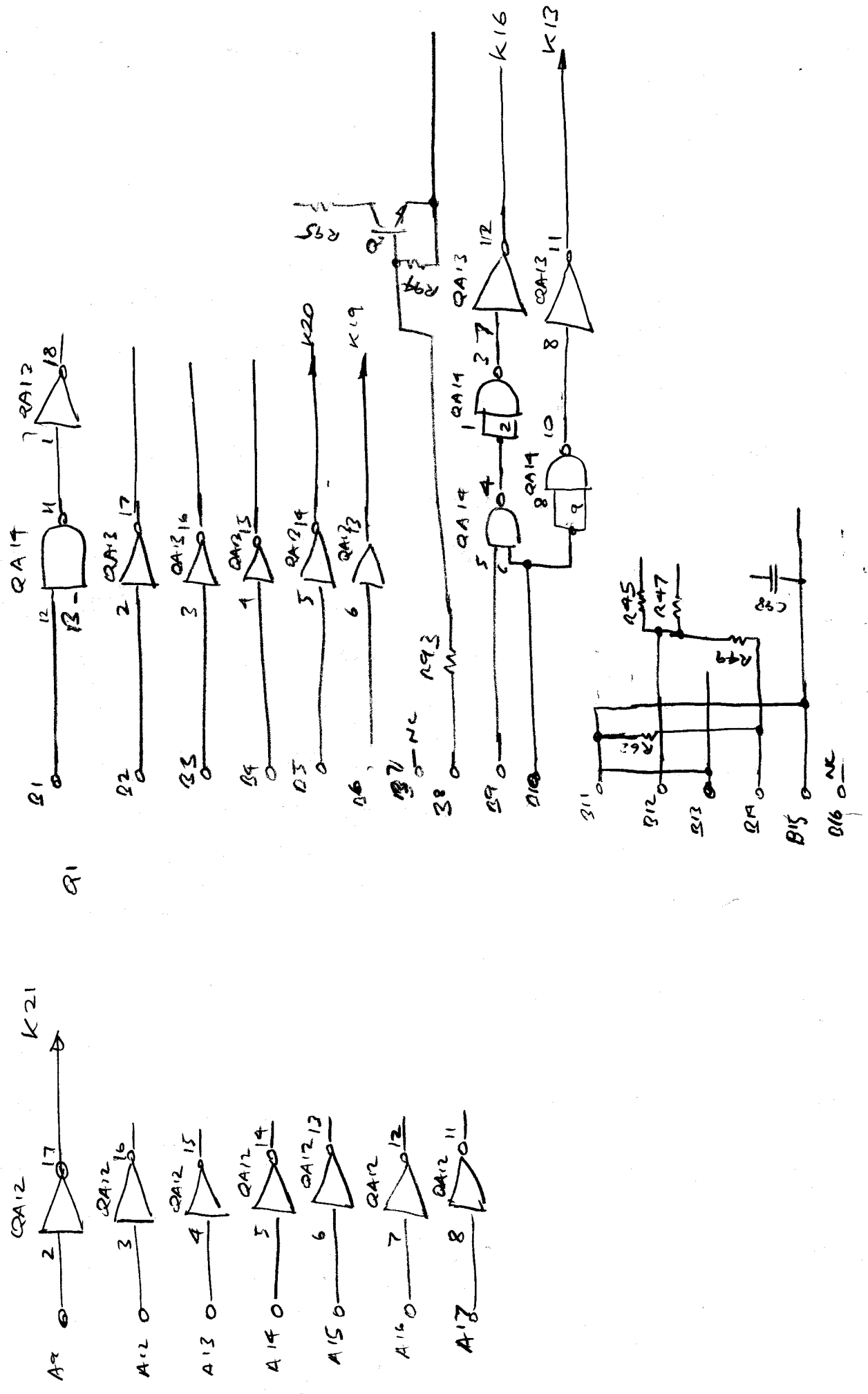
25C1815 NPN

Connector Interface

A1, A7 not connected.
A10, A11, A18 "

ULN2804A

A3 - A8 other sheet



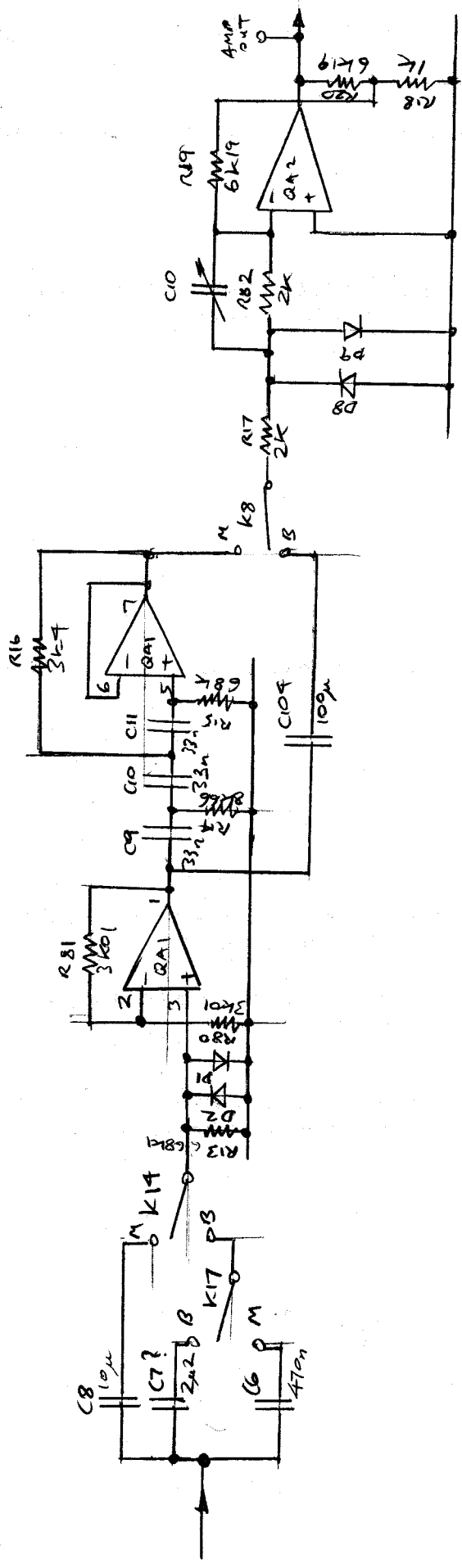
22/9/2012

SHIBASOKU 2-06976 B-9 SHEET 2

HPF 400HZ

QA1 NESJ32

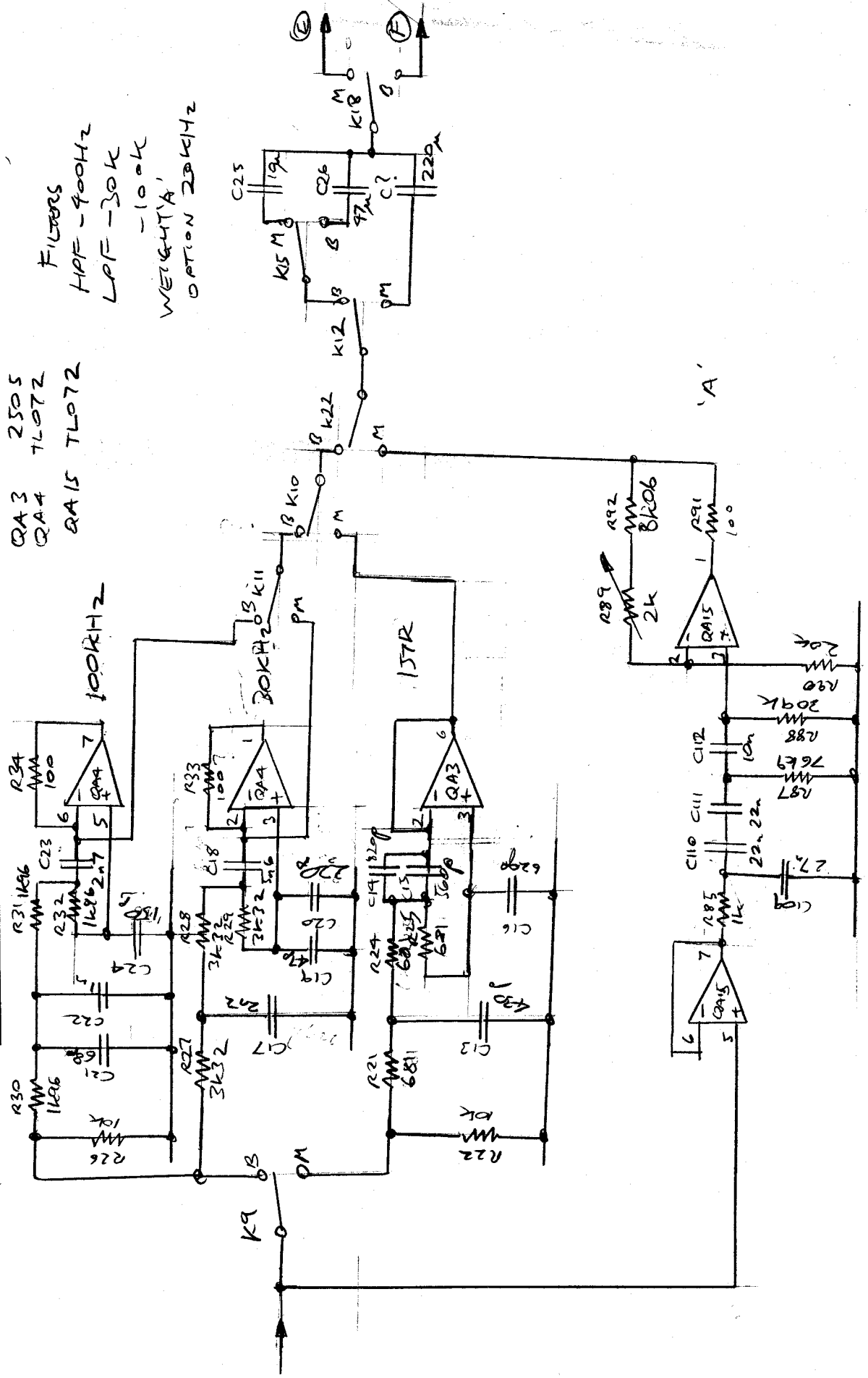
QA2 Z625



22/9/2012

QA3 2505
QA4 TL072
QA15 TL072

FILTERS
HAF - 400HZ
LAF - 30K
- 100K
WEIGHT 'A'
OPTION 20KHZ



'A'

22/9/2012

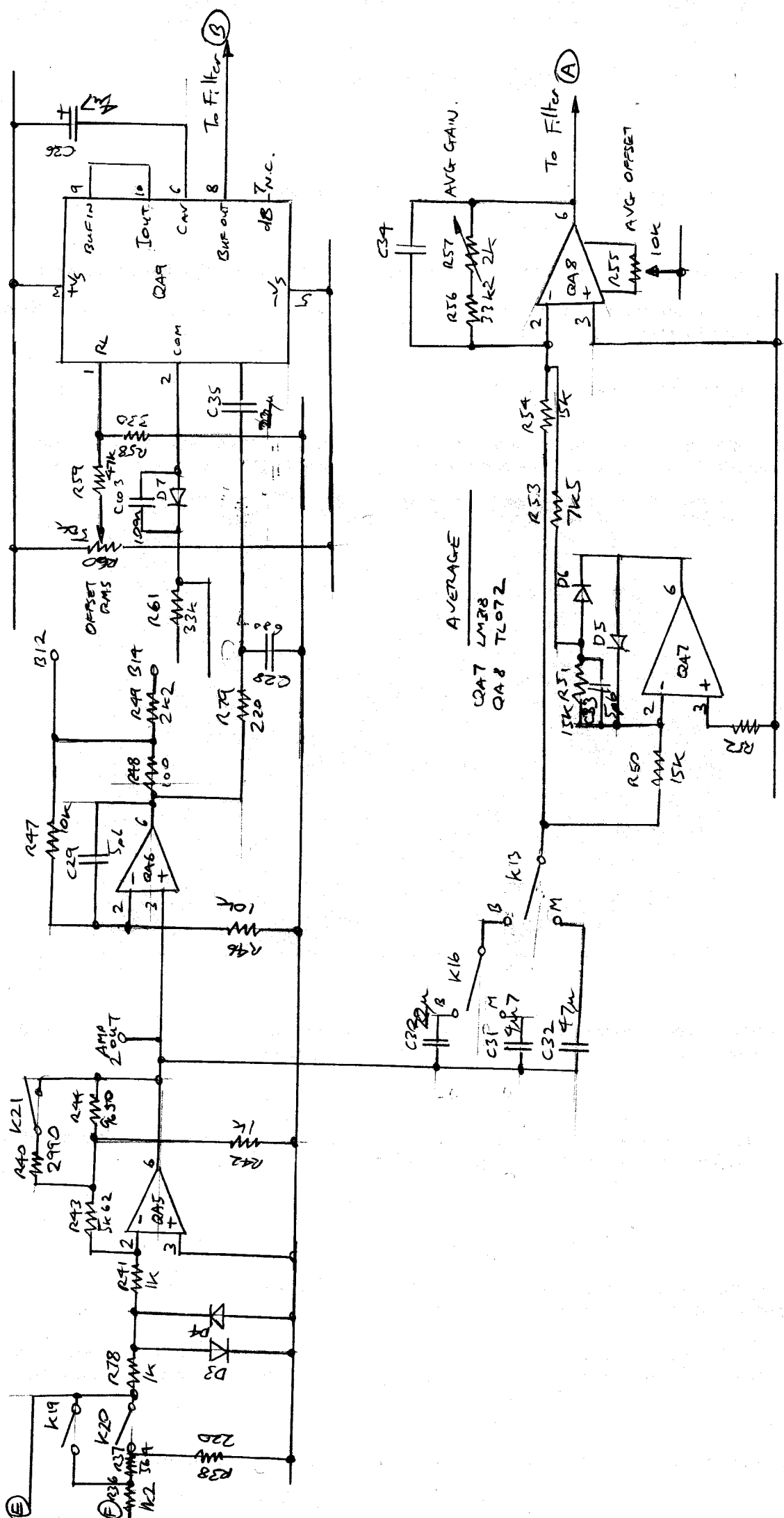
2-06976 B-9 SHEET 4

SHIBASOKU

QAS 2G25
QAG LM318

RMS & AVERAGE

RMS



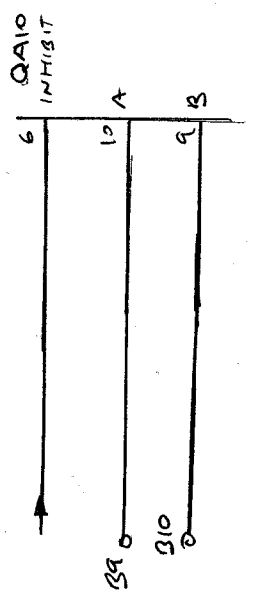
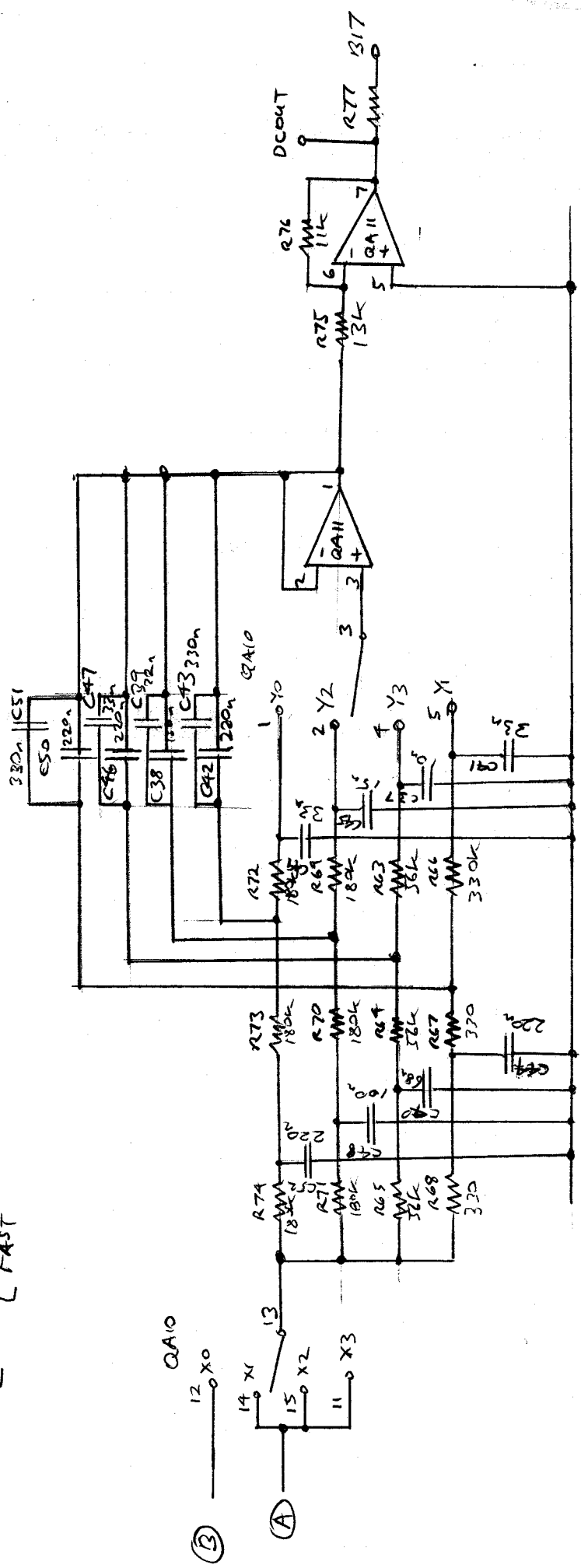
RESPONSE FILTER

RESPONSE [RMS
AVE]

[SLOW
MID
FAST]

QA10 4052

QA11 TL072



$\div 2 = \div 64$
Reset pin $Q_0=1$
 $B_0=0$ (QA16A)

2-078968-3

725 A11

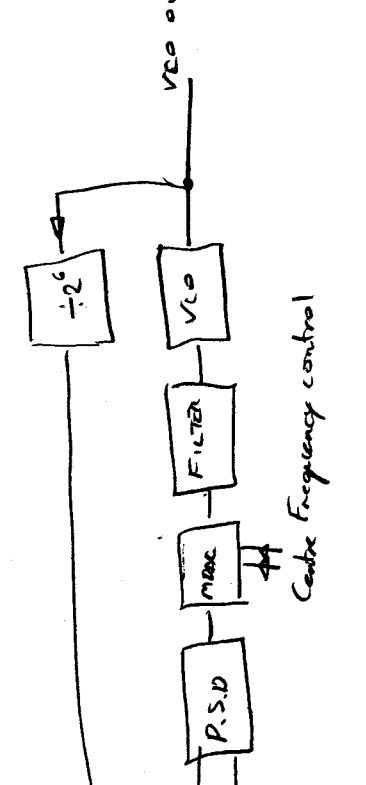
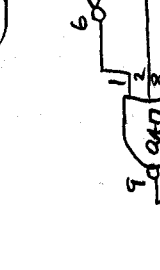
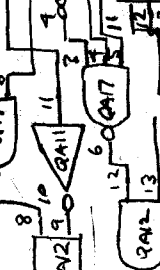
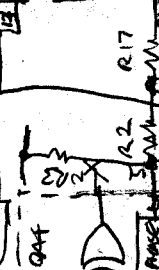
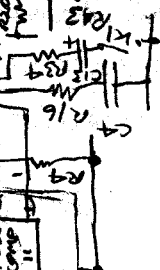
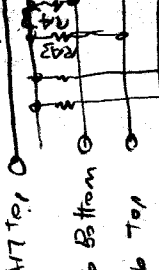
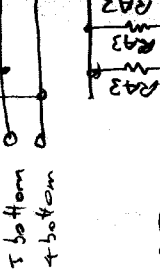
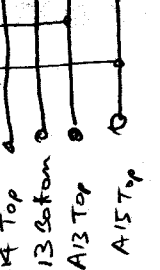
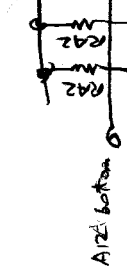
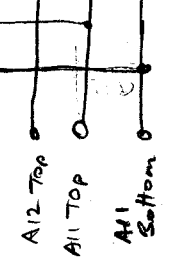
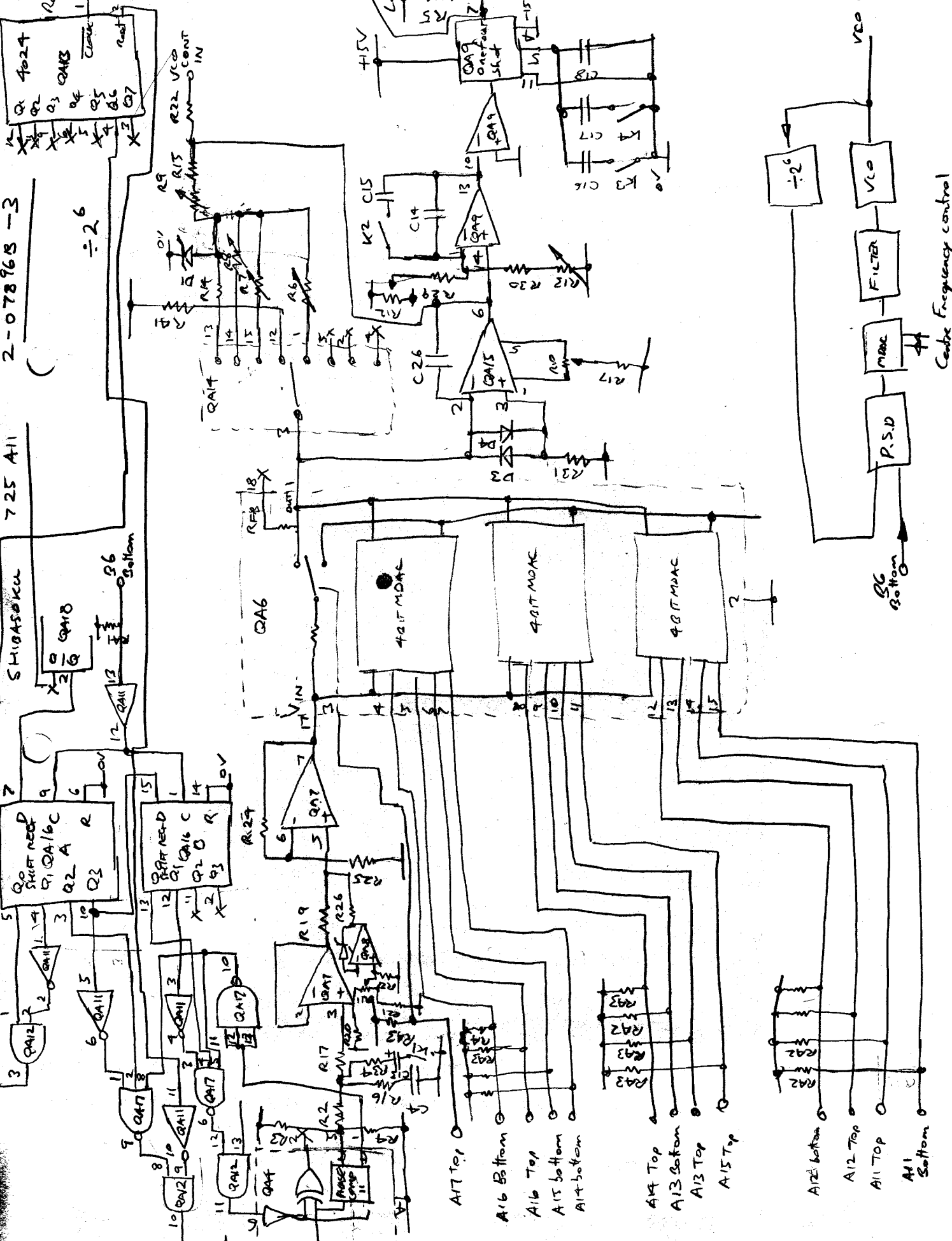
SHIGASOKU
QA18

QA17 NEED
QA16/C
QA16/A
QA16/B

QA17
QA16/C
QA16/A
QA16/B

QA17
QA16/C
QA16/A
QA16/B

QA17
QA16/C
QA16/A
QA16/B



Centre Frequency control

VEO OUT

VEO OUT

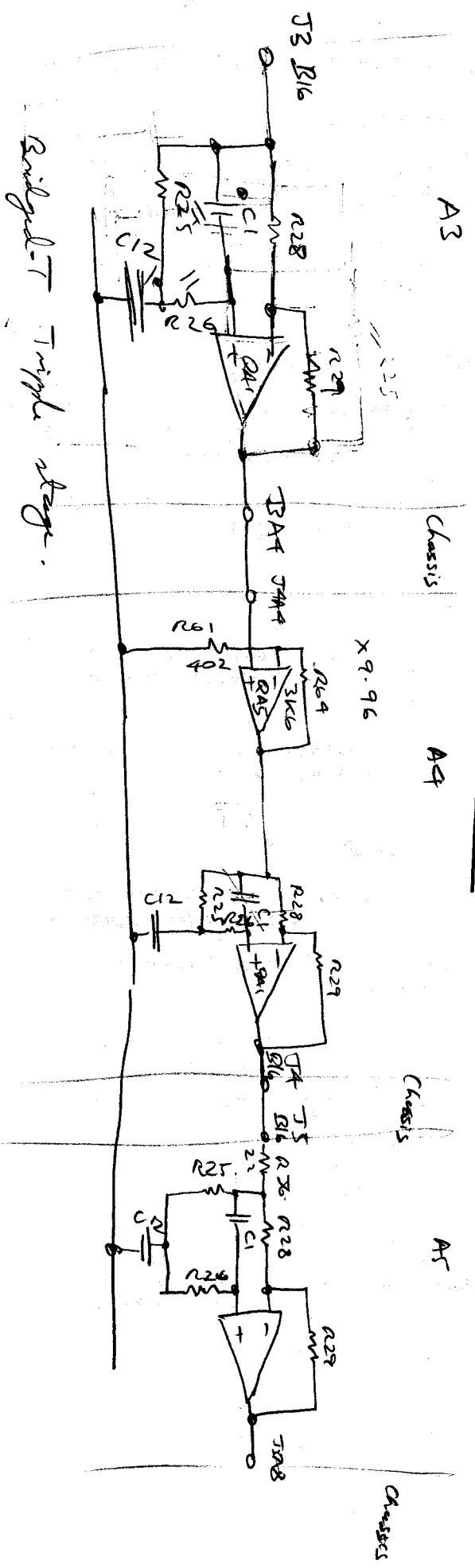
VEO OUT

VEO OUT

VEO OUT

VEO OUT

SHRABDOKH ACTIVE FILTER



Single-T Triple stage.

A3

Chassis

A4

Chassis

A5

Chassis

X 9.96

J3 B16

J5 B8