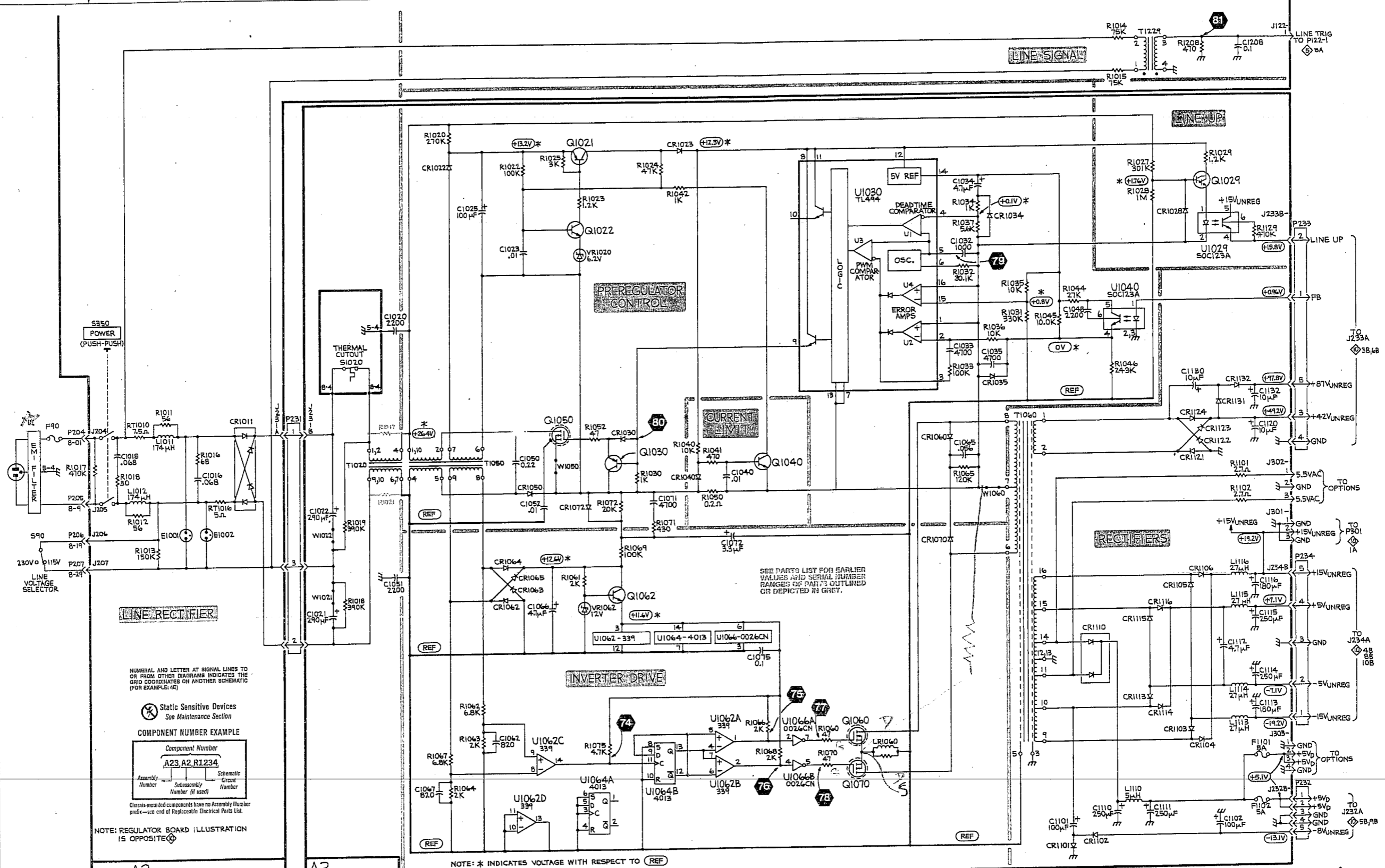


A B C D E F G H J K L M N P S T

1  
2  
3  
4  
5  
6  
7  
8  
9  
10



NUMERAL AND LETTER AT SIGNAL LINES TO OR FROM OTHER DIAGRAMS INDICATES THE GRID COORDINATES ON ANOTHER SCHEMATIC (FOR EXAMPLE: 4E)

Static Sensitive Devices  
See Maintenance Section

COMPONENT NUMBER EXAMPLE

Component Number	
A23	A2 R1234
Assembly Number	Schematic Circuit Number
Subassembly Number (if used)	Number (if used)

Clasps-mounted components have no Assembly Number prefix—use end of Replaceable Electrical Parts List.

NOTE: REGULATOR BOARD ILLUSTRATION IS OPPOSITE

PARTIAL A2 REGULATOR BOARD

A3 INVERTER BOARD

NOTE: \* INDICATES VOLTAGE WITH RESPECT TO REF

SEE PARTS LIST FOR EARLIER VALUES AND SERIAL NUMBER RANGES OF PARTS OUTLINED OR DEPICTED IN GREY.

3829-80  
REV DEC 1985

LOW-VOLTAGE POWER SUPPLY

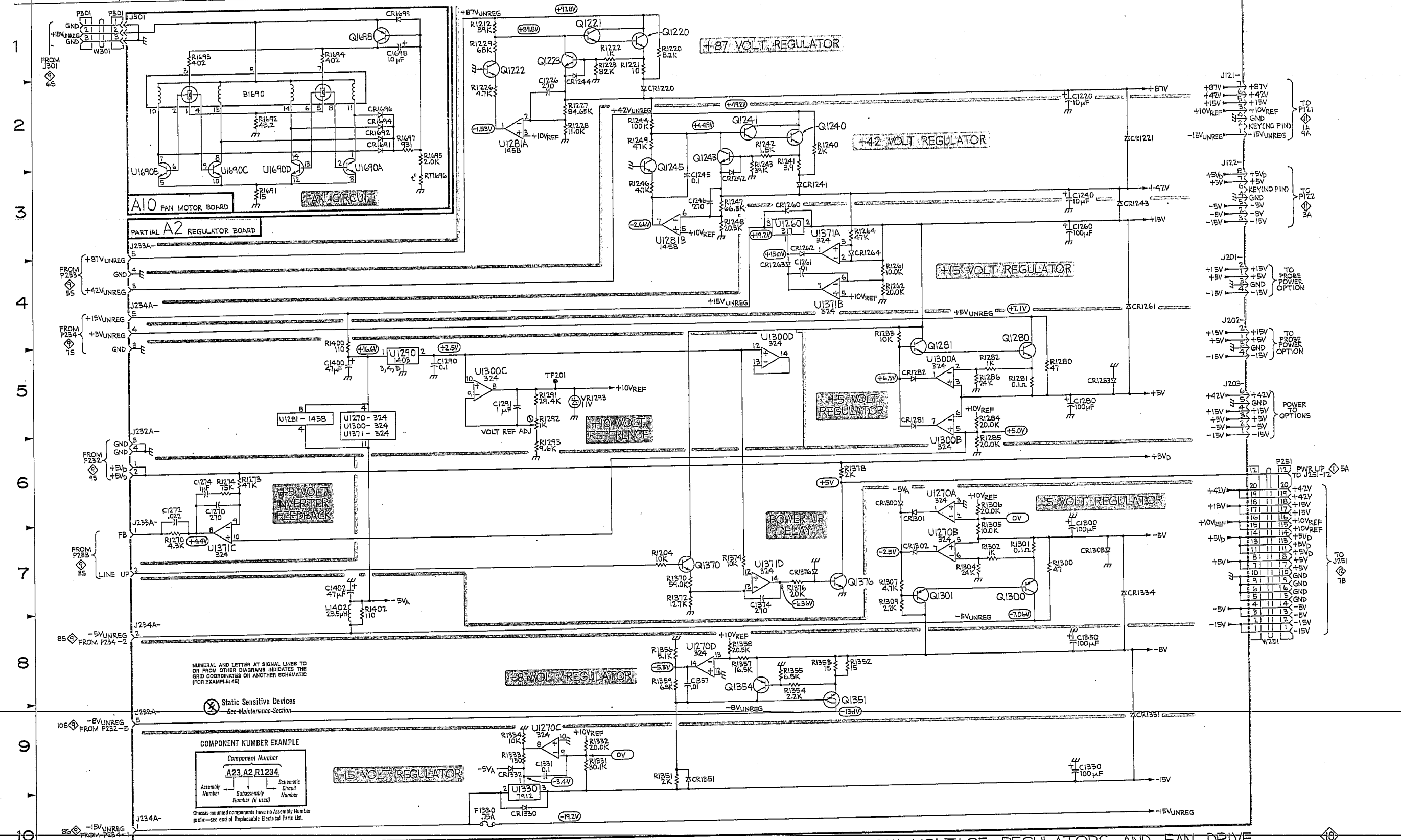
2445

\* P/O 119-1563-00  
(listed on mech. parts)

LOW-VOLTAGE POWER SUPPLY

9

A B C D E F G H J K L M N P S T



2445

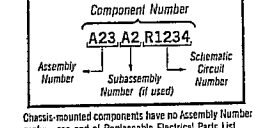
3829-B1

LOW-VOLTAGE REGULATORS AND FAN DRIVE

NUMERAL AND LETTER AT SIGNAL LINES TO OR FROM OTHER DIAGRAMS INDICATES THE GRID COORDINATES ON ANOTHER SCHEMATIC (FOR EXAMPLE: 4E)

Static Sensitive Devices See Maintenance Section

COMPONENT NUMBER EXAMPLE



FRONT PANEL CIRCUIT VIEW FIG. 9-5-7 A10 FAN MOTOR BOARD FIG. 9-13

IT ER

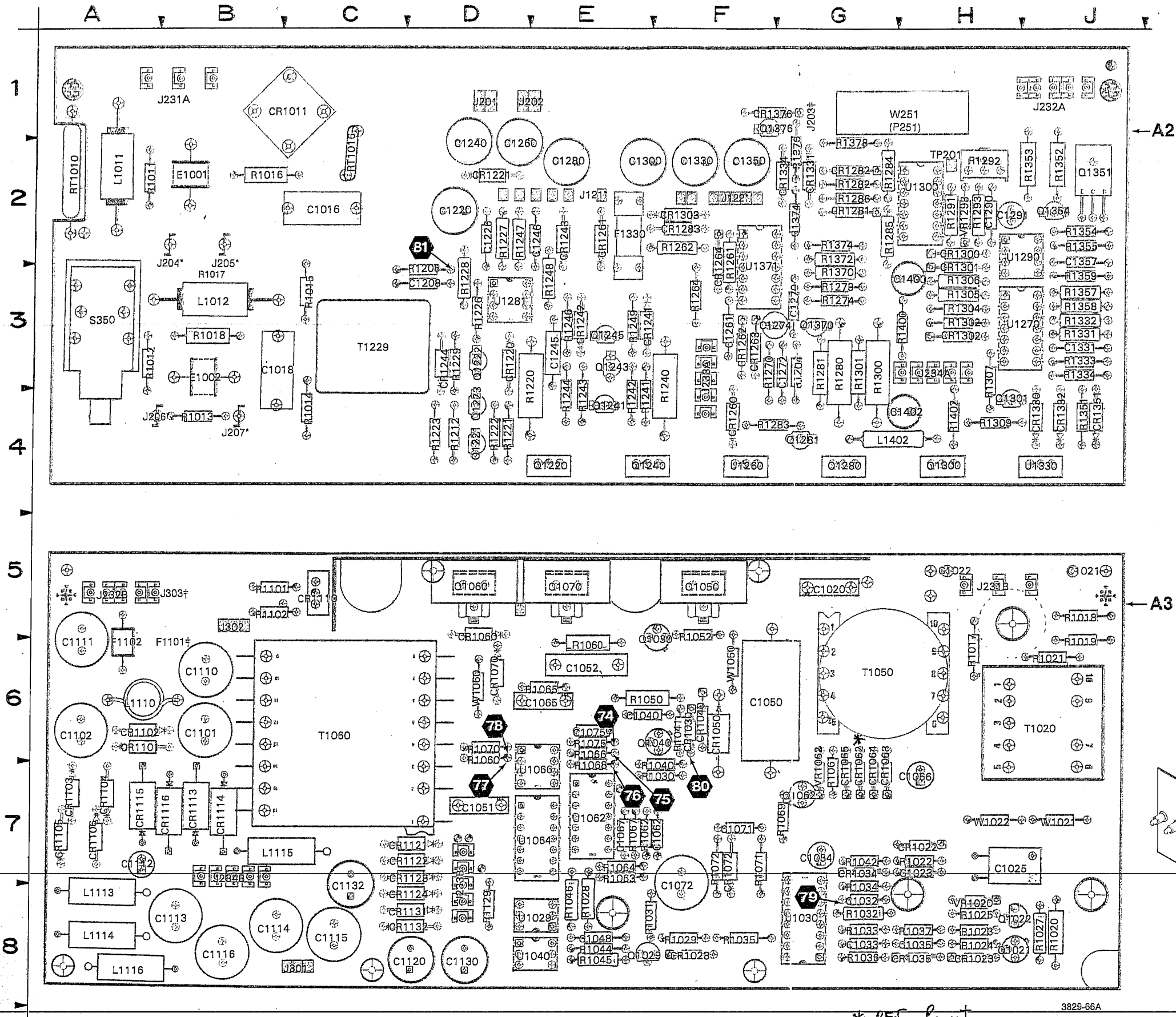
5 5

FAN DRIVE

10

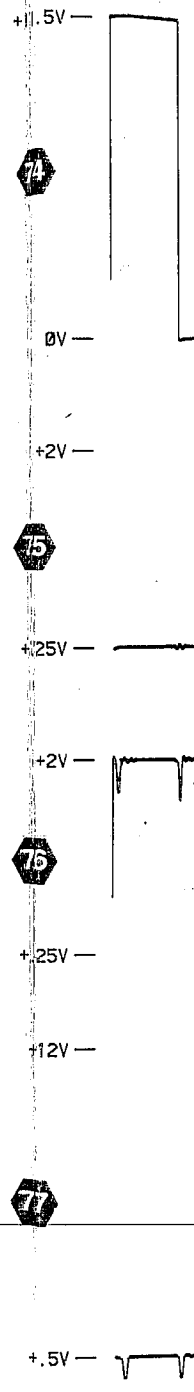
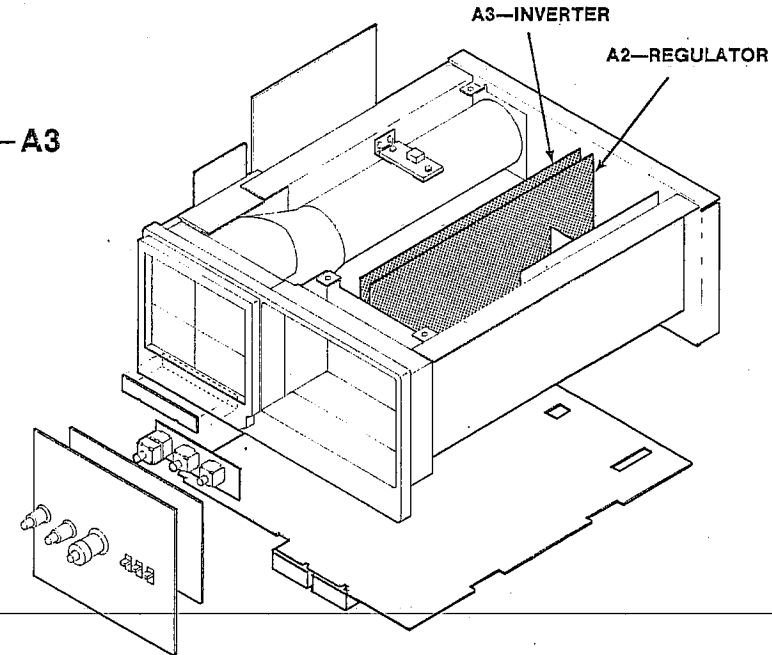
The number board dolly instrument is r

A2—REGULATOR, A3—INVERTER & WAVEFORMS FIG. 9-12



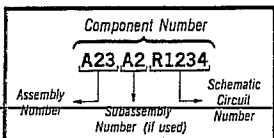
- \* LABELED ON SOME BOARDS AS "P" VICE "J".
- ‡ THESE COMPONENTS MAY NOT EXIST IN EARLIER INSTRUMENTS.
- () COMPONENTS WITHIN PARENTHESES MAY NOT BE LOCATED PRECISELY AS SHOWN BUT ARE NEAR THEIR INDICATED POSITION.

ALL COMPONENTS MOUNTED ON A3—INVERTER BOARD ARE SHOWN ON SCHEMATIC DIAGRAM 9



Static Sensitive Devices See Maintenance Section

COMPONENT NUMBER EXAMPLE



Chassis-mounted components have no Assembly Number prefix—see end of Replaceable Electrical Parts List.

\* REF POINT  
CR1062

3829-66A  
REV DEC 1983

Figure 9-12. A2—Regulator and A3—Inverter boards.

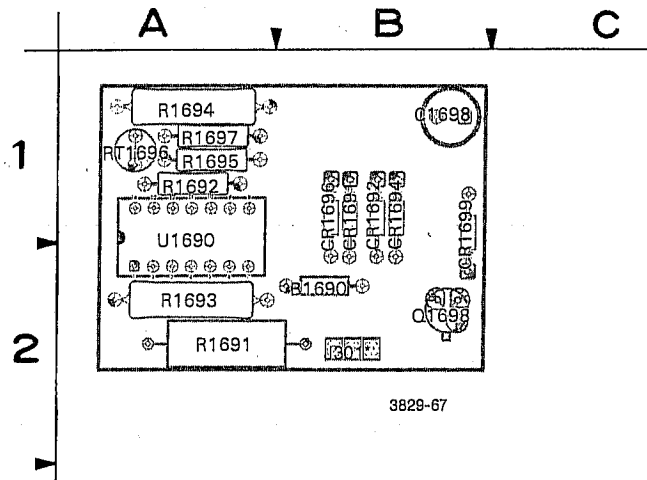
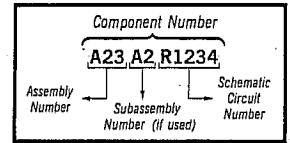


Figure 9-13. A10—Fan Motor board.

 Static Sensitive Devices  
See Maintenance Section

COMPONENT NUMBER EXAMPLE

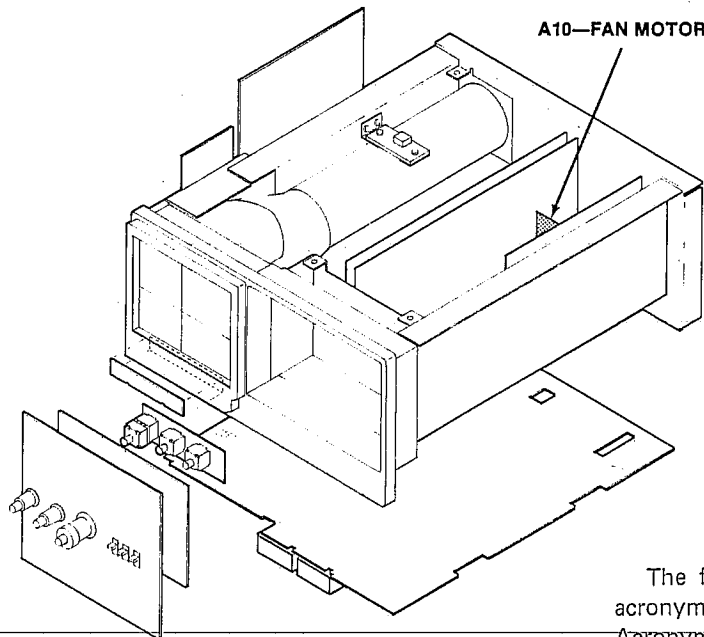


Chassis-mounted components have no Assembly Number prefix—see end of Replaceable Electrical Parts List.

\* LABELED ON SOME BOARDS AS "P" VICE "J".

ALL COMPONENTS MOUNTED ON A10—FAN MOTOR BOARD ARE SHOWN ON SCHEMATIC

DIAGRAM 



### ACRONYM DICTIONARY

The following listing explains some of the less obvious acronyms and signal labels used on this schematic. Acronyms and labels not shown in this listing may be included in the circuit descriptions (Section 3) and should be obvious if a little thought is given to the intended circuit function.

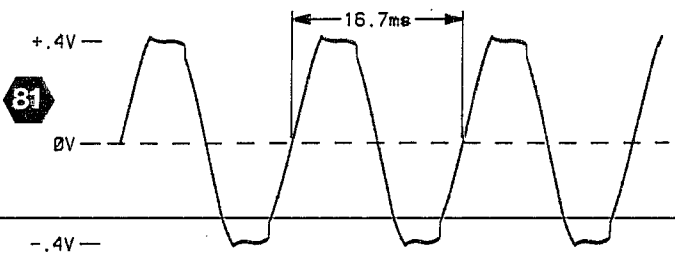
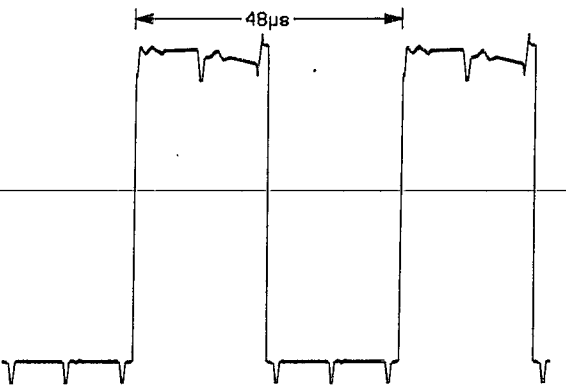
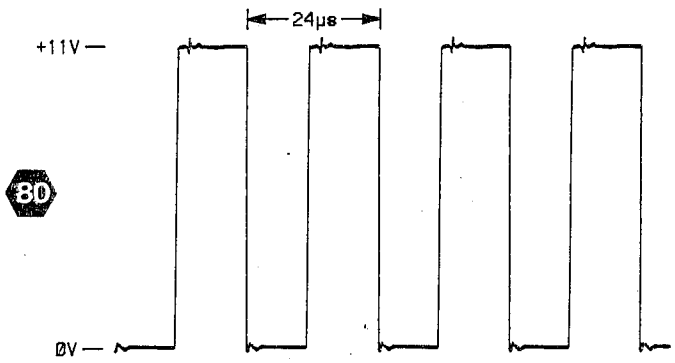
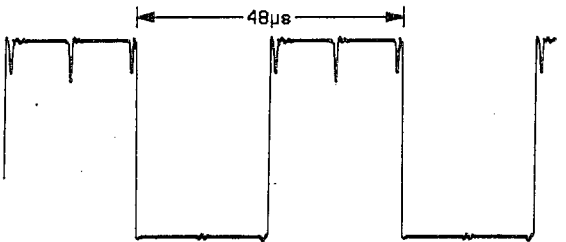
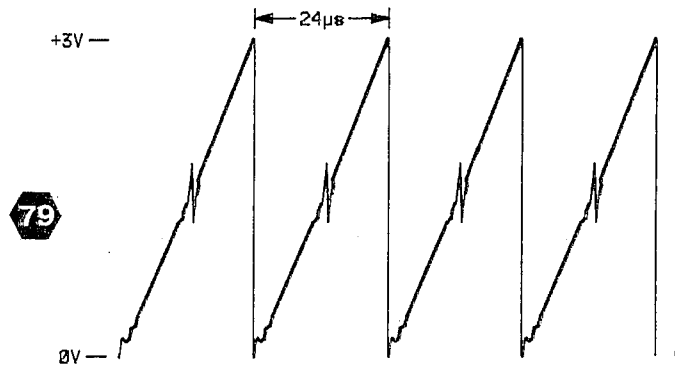
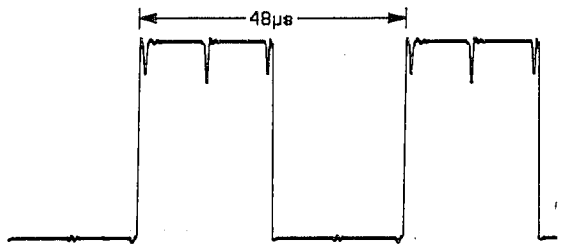
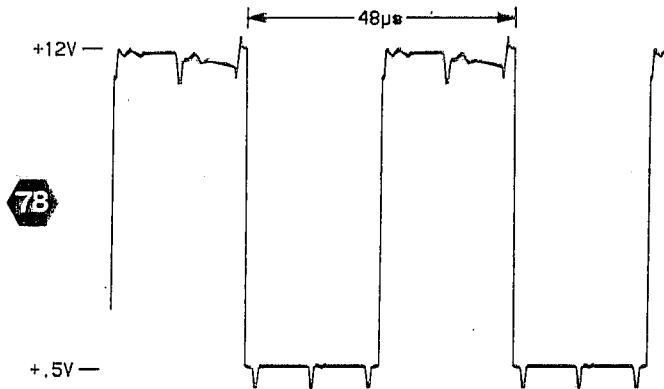
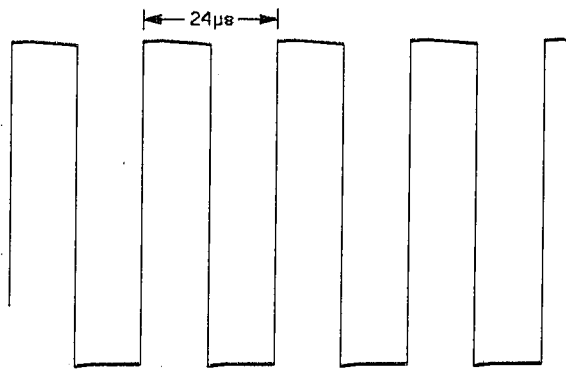
FB . . . feedback  
+5VD . . . +5 V digital

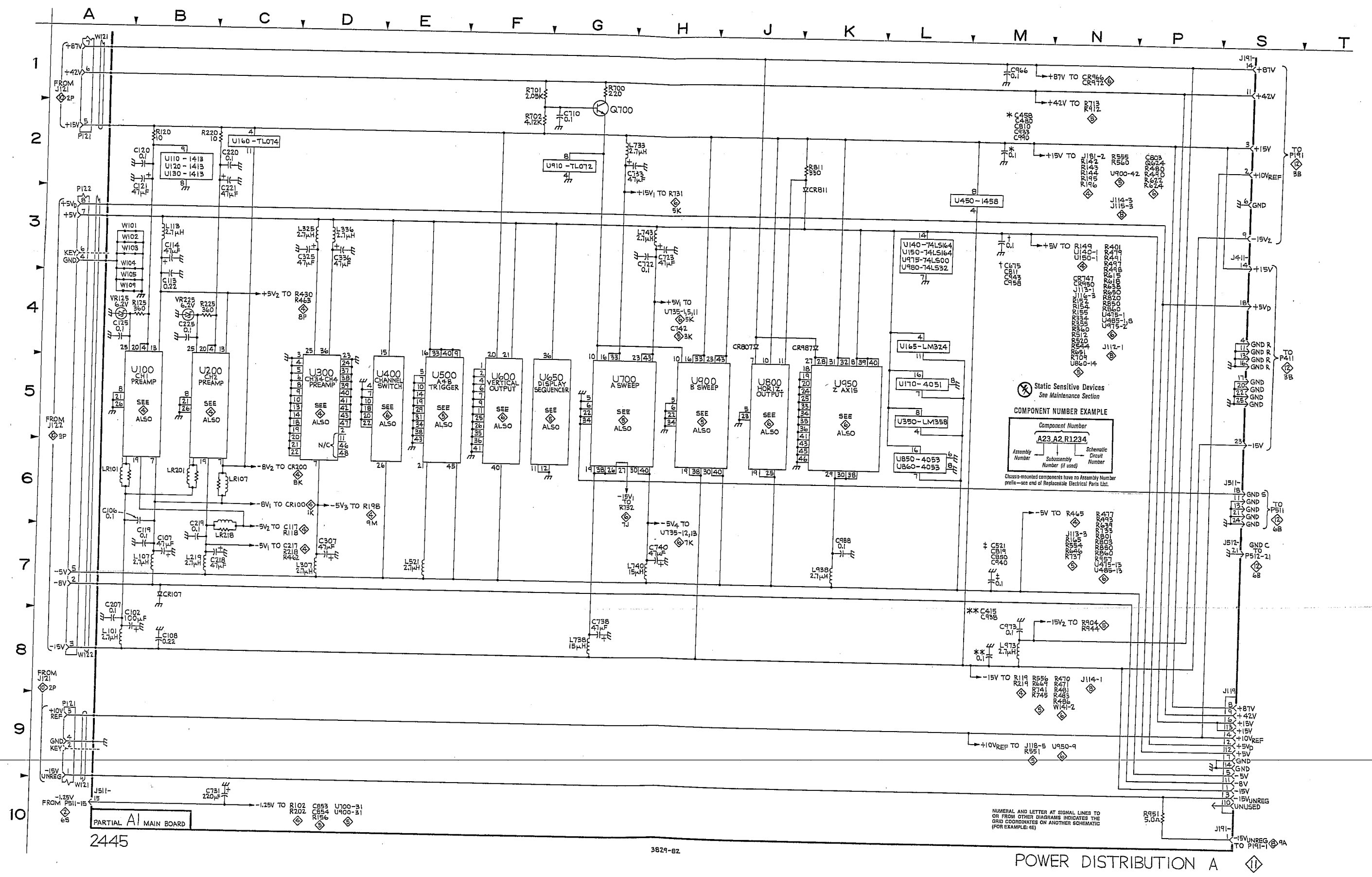
# LOW-VOLTAGE REGULATORS AND FAN DRIVE DIAGRAM

<b>ASSEMBLY A2</b>											
CIRCUIT NUMBER	SCHEM LOCATION	BOARD LOCATION	CIRCUIT NUMBER	SCHEM LOCATION	BOARD LOCATION	CIRCUIT NUMBER	SCHEM LOCATION	BOARD LOCATION	CIRCUIT NUMBER	SCHEM LOCATION	BOARD LOCATION
C1220	2M	2D	CR1351	9H	4J	R1223	1G	4D	R1353	8J	2J
C1226	2F	2D	CR1376	7J	1F	R1226	2F	3D	R1354	8J	2J
C1240	3M	2D				R1227	2G	2D	R1355	8J	2J
C1245	3H	3E	F1330	10F	2E	R1228	2G	3D	R1357	8H	3J
C1246	3H	2E				R1229	1F	3D	R1358	8H	3J
C1260	3M	2D	J121	2P	2E	R1240	2J	3F	R1359	8H	3J
C1261	4J	3F	J122	3P	2F	R1241	2J	4E	R1370	7H	3G
C1270	6C	3G	J201	4P	1D	R1242	2J	4E	R1372	7H	2G
C1272	6B	3G	J202	4P	1D	R1243	2J	4E	R1374	7H	2G
C1274	6B	3F	J203	5P	1G	R1244	2G	4E	R1376	7J	2G
C1280	5M	2E	J232A	5B	1J	R1246	3G	3E	R1378	6K	2G
C1290	5E	2H	J232A	9B	1J	R1247	3H	2D	R1400	4D	3H
C1291	5F	2H	J233A	3B	3F	R1248	3H	3E	R1402	7D	4H
C1300	7M	2E	J233A	6B	3F	R1249	2G	3E			
C1330	9M	2F	J234A	10B	3H	R1261	4K	3F	TP201	5F	2H
C1331	9F	3J	J234A	4B	3H	R1262	4K	2F			
C1350	8M	2F	J234A	8B	3H	R1264	3K	3F	U1260	3J	4F
C1357	8H	2J				R1270	7B	3F	U1270A	6L	3J
C1374	7J	2G	L1402	7D	4H	R1273	6C	3G	U1270B	7L	3J
C1400	5D	3H				R1274	6C	3G	U1270C	9F	3J
C1402	7D	4H	P251	6S	1H	R1280	5M	3G	U1270D	8H	3J
						R1281	5M	3G	U1270	5D	3J
CR1220	2H	3D	Q1220	1H	4E	R1282	5L	2G	U1281A	2F	3D
CR1221	2N	2D	Q1221	1G	4D	R1283	4K	4F	U1281B	3H	3D
CR1241	3J	3E	Q1222	1F	3D	R1284	5L	2G	U1281	5C	3D
CR1242	3H	3E	Q1223	1F	4D	R1285	6L	2G	U1290	5E	2J
CR1243	3N	2E	Q1240	2K	4E	R1286	5L	2G	U1300A	5L	2H
CR1244	2G	3D	Q1241	2J	4E	R1291	5F	2H	U1300B	6L	2H
CR1260	3J	4F	Q1243	2H	3E	R1292	5F	2H	U1300C	5F	2H
CR1261	4N	2E	Q1245	3H	3E	R1293	6F	2H	U1300D	5J	2H
CR1262	3J	3F	Q1280	5M	4G	R1300	7M	3G	U1300	5D	2H
CR1263	4J	3F	Q1281	5L	4G	R1301	7M	3G	U1330	10F	4J
CR1264	4K	3F	Q1300	7M	4H	R1302	7L	3H	U1371A	3J	3F
CR1281	5K	2G	Q1301	7L	4H	R1304	7L	3H	U1371B	4K	3F
CR1282	5K	2G	Q1351	9K	2J	R1305	7L	3H	U1371C	7C	3F
CR1283	5N	2F	Q1354	8J	2J	R1306	6L	3H	U1371D	7J	3F
CR1300	6K	2H	Q1370	7H	3G	R1307	7K	3H	U1371	6D	3F
CR1301	7K	3H	Q1376	7K	1F	R1309	7K	4H			
CR1302	7K	3H				R1331	9G	3J	VR1293	5G	2H
CR1303	7M	2F	R1204	7H	3G	R1332	9G	3J			
CR1330	10F	4J	R1212	1F	4D	R1333	9F	3J	W251	8S	1H
CR1331	9N	2G	R1220	1H	3E	R1334	9F	3J			
CR1332	9F	4J	R1221	1G	4D	R1351	9H	4J			
CR1334	7N	2G	R1222	1G	4D	R1352	8K	2J			
<i>Partial A2 also shown on diagram 9.</i>											
<b>ASSEMBLY A10</b>											
CIRCUIT NUMBER	SCHEM LOCATION	BOARD LOCATION	CIRCUIT NUMBER	SCHEM LOCATION	BOARD LOCATION	CIRCUIT NUMBER	SCHEM LOCATION	BOARD LOCATION	CIRCUIT NUMBER	SCHEM LOCATION	BOARD LOCATION
B1690	2C	2B	CR1696	2D	1B	R1691	3C	2A	RT1696	3E	1A
			CR1699	1E	1B	R1692	2C	1A			
C1698	1E	1B	J301	1B	2B	R1693	1B	2A	U1690A	2D	1A
						R1694	1D	1A	U1690B	2B	1A
CR1691	2D	1B	Q1698	1D	2B	R1695	2E	1A	U1690C	2C	1A
CR1692	2D	1B				R1697	2E	1A	U1690D	2C	1A
CR1694	2D	1B									
<b>CHASSIS-MOUNTED PARTS</b>											
CIRCUIT NUMBER	SCHEM LOCATION	BOARD LOCATION	CIRCUIT NUMBER	SCHEM LOCATION	BOARD LOCATION	CIRCUIT NUMBER	SCHEM LOCATION	BOARD LOCATION	CIRCUIT NUMBER	SCHEM LOCATION	BOARD LOCATION
W301	1A	CHASSIS	P301	1A	CHASSIS						

# TEST WAVEFORM SETUP INFORMATION

The numbered waveforms below were obtained at the test points indicated on the accompanying schematic diagram and are representative of signals that may be expected at the associated points whenever the instrument is running.





2445

A B C D E F G H J K L M N P S T

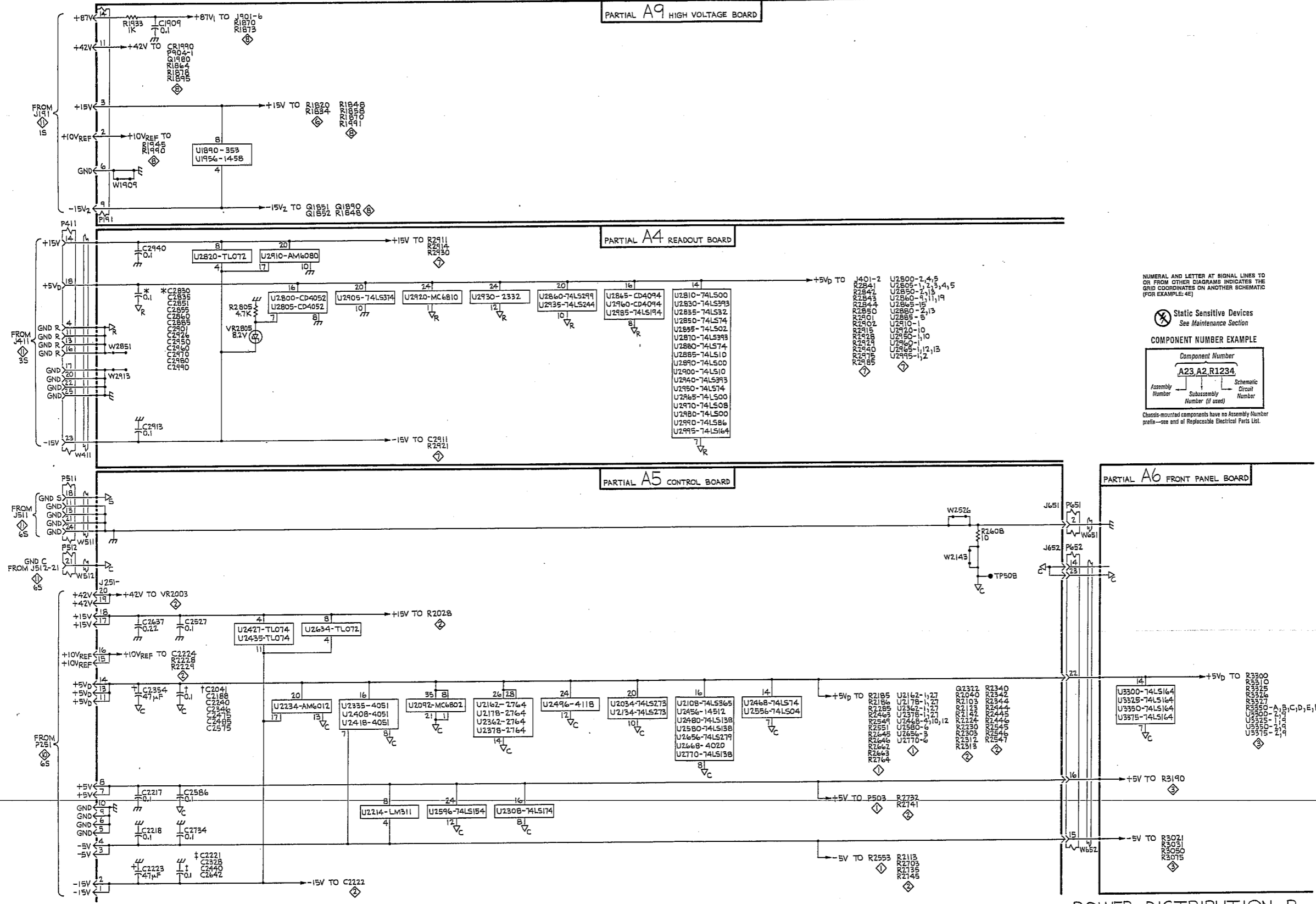
1  
2  
3  
4  
5  
6  
7  
8  
9  
10

PARTIAL A9 HIGH VOLTAGE BOARD

PARTIAL A4 READOUT BOARD

PARTIAL A5 CONTROL BOARD

PARTIAL A6 FRONT PANEL BOARD



NUMERAL AND LETTER AT SIGNAL LINES TO OR FROM OTHER DIAGRAMS INDICATES THE GRID COORDINATES ON ANOTHER SCHEMATIC (FOR EXAMPLE: 4E)

Static Sensitive Devices  
See Maintenance Section

COMPONENT NUMBER EXAMPLE

Component Number		
A23	A2	R1234
Assembly Number	Subassembly Number (if used)	Schematic Circuit Number

Chassis-mounted components have no Assembly Number prefix—see end of Replaceable Electrical Parts List.

2445

3829-83

POWER DISTRIBUTION B

POWER DISTRIBUTION B

12