

CABLE ASSEMBLY, PROBE TO OSCILLOSCOPE (Part No. 012-0259-00)

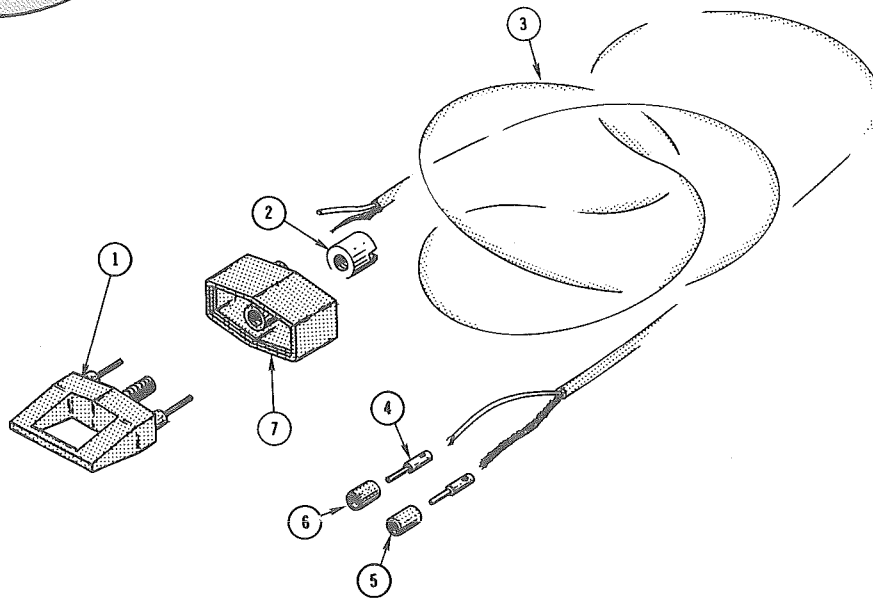
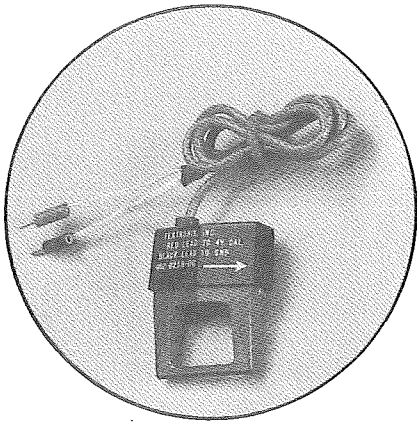


Fig. & Index No.	Tektronix Part No.	Serial/Model No. Eff Disc	Q † y	Description				
				1	2	3	4	5
	012-0259-00		1	CABLE ASSEMBLY, probe to oscilloscope, current loop				
	- - - - -		-	one end				
	- - - - -		-	cable assembly includes:				
1	119-0199-00		1	CURRENT LOOP				
2	220-0604-00		1	NUT, cap, 6-32 x 0.281 inch OD				
3	175-0284-00		ft	CABLE, coaxial, 50 Ω (20.5 inches long)				
4	134-0124-00		2	PLUG, tip, solder mount				
5	- - - - -		-	INSULATION, black (cable braid)				
6	- - - - -		-	INSULATION, red				
7	103-0134-00		1	ADAPTER, current loop				

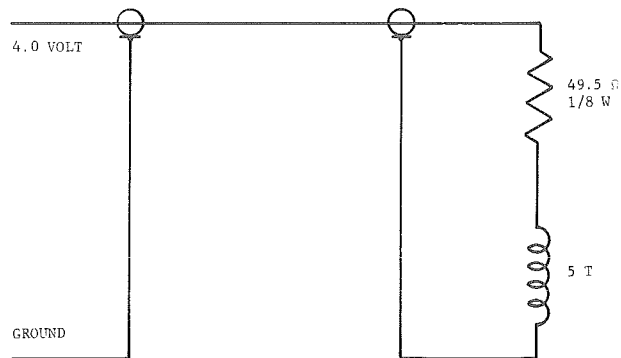
DATA SHEET
NO. <u>062-1317-00</u>
DATE <u>OCT. 1970</u>
COPYRIGHT © 1970 TEKTRONIX INC. ALL RIGHTS RESERVED

012-0259-00

CABLE ASSEMBLY, PROBE TO OSCILLOSCOPE (Part No. 012-0259-00)

ELECTRICAL PARTS

321-0909-01 49.5 Ω 0.125 W 0.5%



The 012-0259-00 Current Adapter provides an accurate current source for calibrating current probes and current measuring systems. When connected to the 4.0 volt calibrator output of 7000 series instruments, or an equivalent source, the current output is 40 milliamperes.

Characteristics

Output Current

40 milliamperes within 1%
when attached to 4.0 volt
7000 series calibrator
output or equivalent.