

will'tek

Willtek

1205

RF Probe 20dB



Bandwidth: 100 kHz to 4 GHz
Low Distortion, Passive RF Design
Light RF Loading Characteristics
Internal 50 VDC Block
10:1 Voltage Ratio
Rugged Design

The 1205 RF Probe 20 dB is a passive 10:1 RF voltage probe with a 50 VDC block built in.

It has been designed to allow users of RF test equipment to use standard signal tracing techniques. The probe makes it possible to conveniently and accurately monitor or inject signals up to 4 GHz into RF circuits without significantly loading or detuning them.

The probe comes with interchangeable ground clips that adapt to a wide range of applications.

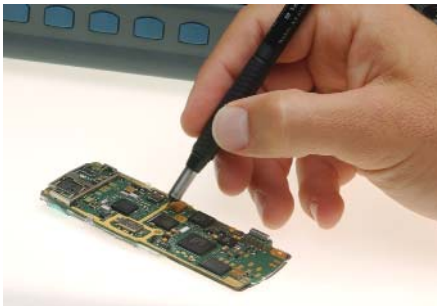
Specifications

1205 RF Probe 20 dB

| | |
|---------------------|--|
| Frequency range | |
| Specified | 100 kHz to 3 GHz |
| Usable | 100 kHz to 4 GHz |
| Frequency response | ±3dB |
| Voltage attenuation | 10:1 (Nominal) for 50 Ω sources |
| RF attenuation | 20 dB (Nominal) for 50 Ω circuitries |
| RF loading effects | 500 Ω ±10% < 1 pF at 1 MHz |
| RF voltage range | 7 V _{rms} (continuous) 35 V _{rms} (max. 1 sec.) |
| DC voltage block | 50 V maximum |
| Cable length | 1 meter |
| Connector | BNC (male) |

Ordering information

| | |
|---|-----------|
| 1205 RF Probe 20 dB including adapter N (male), BNC (female) | M 248 640 |
|---|-----------|



© Copyright 2002 Willtek Communications GmbH. All rights reserved. Willtek Communications, Willtek and its logo are trademarks of Willtek Communications GmbH. All other trademarks and registered trademarks are the property of their respective owners.

Note: Specifications, terms and conditions are subject to change without prior notice.

Willtek Communications GmbH
85737 Ismaning
Germany
Tel: +49 (0) 89 996 41-0
Fax: +49 (0) 89 996 41-440
info@willtek.com

Willtek Communications Inc.
Indianapolis
USA
Tel: +1 317 595 2021
Tel: +1 866 willtek
Fax: +1 317 595 2023
willtek.us@willtek.com

Willtek Communications Ltd.
Chessington
United Kingdom
Tel: +44 (0) 20 8408 5720
Fax: +44 (0) 20 8397 6286
willtek.uk@willtek.com

will'tek